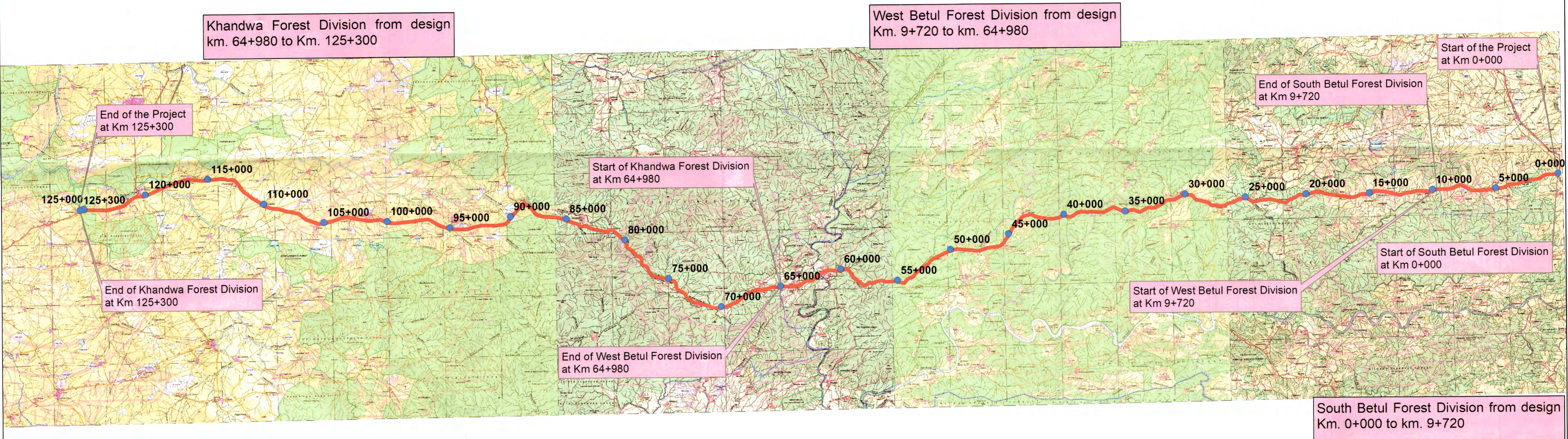


4 laning of Betul-Khandwa Section of National Highway(NH-347B) from Betul Design Ch 0+000 to Khandwa Design Ch 125+300 (length-125.300 km) under BHARATMALA Pariyojana Feeder route (Phase- I) in the State of Madhya Pradesh on Hybrid Annuity Mode

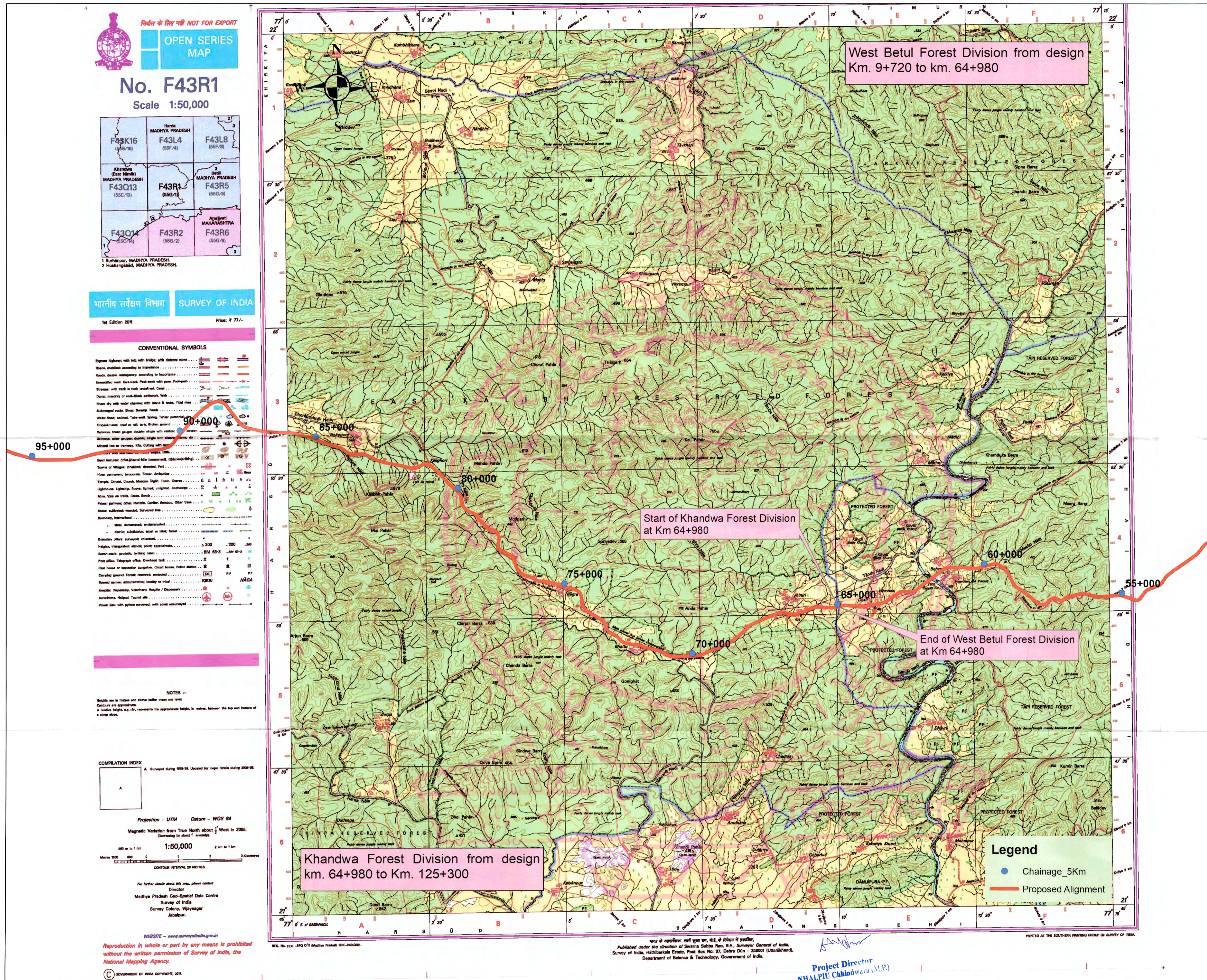


Legend

- Chainage_5Km
- Proposed Alignment

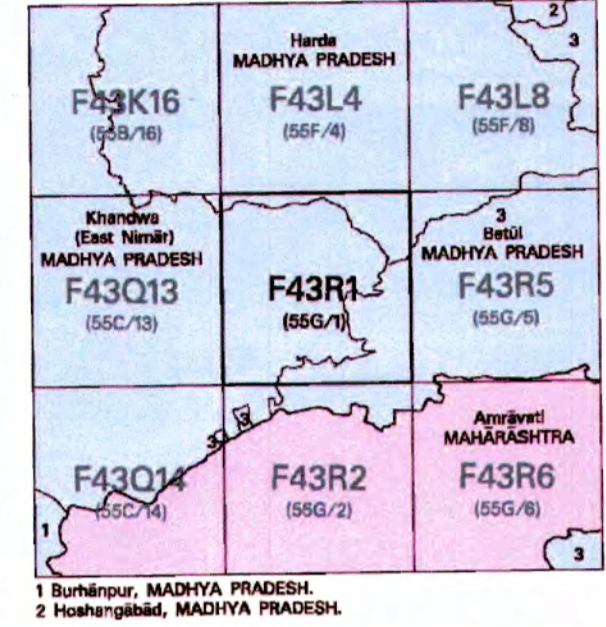
Signature
 Project Director
 NH-347B, Khandwa (M.P.)

4 laning of Betul-Khandwa Section of National Highway(NH-347B) from Betul Design Ch 0+000 to Khandwa Design Ch 125+300 (length-125.300 km) under BHARATMALA Pariyojana Feeder route (Phase- I) in the State of Madhya Pradesh on Hybrid Annuity Mode



निर्वाह के लिए नहीं NOT FOR EXPORT
OPEN SERIES MAP

No. F43R1
 Scale 1:50,000



भारतीय सर्वेक्षण विभाग **SURVEY OF INDIA**
 1st Edition 2011. Price: ₹ 77/-

CONVENTIONAL SYMBOLS

Express highway with toll with bridge with distance stone	
Roads, metalled, according to importance	
Unmetalled road, Cart-track, Post-road with paved foot-path	
Stream with track to back, unfordable, Canal	
Dam, masonry or rock, dam, weir, lock, Tidal dam	
River dry with water channel with island & rocks, Tidal dam	
Submerged rock, Shoal, Swamp, Fresh water	
Rock bank, coral, Tidal bank, Tidal point, Tidal point	
Rocky bank, coral, Tidal bank, Tidal point, Tidal point	
Waterfall, broad gauge, double single with station	
Station, other points, double single with station	
Mixed line or tramway, etc., Cutting with bridge	
Open forest, (Shaded) (unshaded) (unshaded) (unshaded)	
Town or Village, inhabited, deserted, Fort	
Hamlet, hamlet, temporary, Tower, Antenna	
Temple, Church, Mosque, Sikh, Tank, Green	
Lighthouse, Lightship, Buoy, Lighted, unlighted, Anchorage	
Min. Well on wells, Green, Bar, etc.	
Public gateway, other, Forest, Control, Station, Other, etc.	
Area, cultivated, wooded, Surveyed tree	
Boundary, International	
etc., demarcated, undemarcated	
etc., subdivision, label or mark, forest	
Boundary, other, surveyed, un-surveyed	
Height, trigonometric, mean, peak, approximate	
Spot height, ground, broken, level	
Post office, Telegraph office, Directional tank	
Post house or inspection bungalow, Check house, Police station	
Camping ground, Forest reserved, reserved	
Special names, administrative, locality or other	
Isolated, temporary, temporary, temporary	
Armed, military, Trench, etc.	
Power line, with poles, overhead, with poles, unoverhead	

NOTES :-
 Heights are in metres and shown in feet and inch.
 Contours are approximate.
 A white height, e.g. 50, represents the approximate height, in metres, between the top and bottom of a steep slope.

COMPLETION INDEX
 A. Surveyed during 1979-79. Updated for minor details during 2000-06.

Projection - UTM Datum - WGS 84
 Magnetic Variation from True North about 1/2° West in 2005. Decreases by about 1/2° annually.
 Scale 1:50,000
 Contour Interval 20 METRES

For further details about this map, please contact:
 Director
 Madhya Pradesh Geo-Spatial Data Centre
 Survey of India
 Survey Colony, Vijaynagar
 Jabalpur.

WEBSITE - www.surveyofindia.gov.in
 Reproduction in whole or part by any means is prohibited without the written permission of Survey of India, the National Mapping Agency.
 © GOVERNMENT OF INDIA COPYRIGHT, 2011

West Betul Forest Division from design
 Km. 9+720 to km. 64+980

Start of Khandwa Forest Division
 at Km 64+980

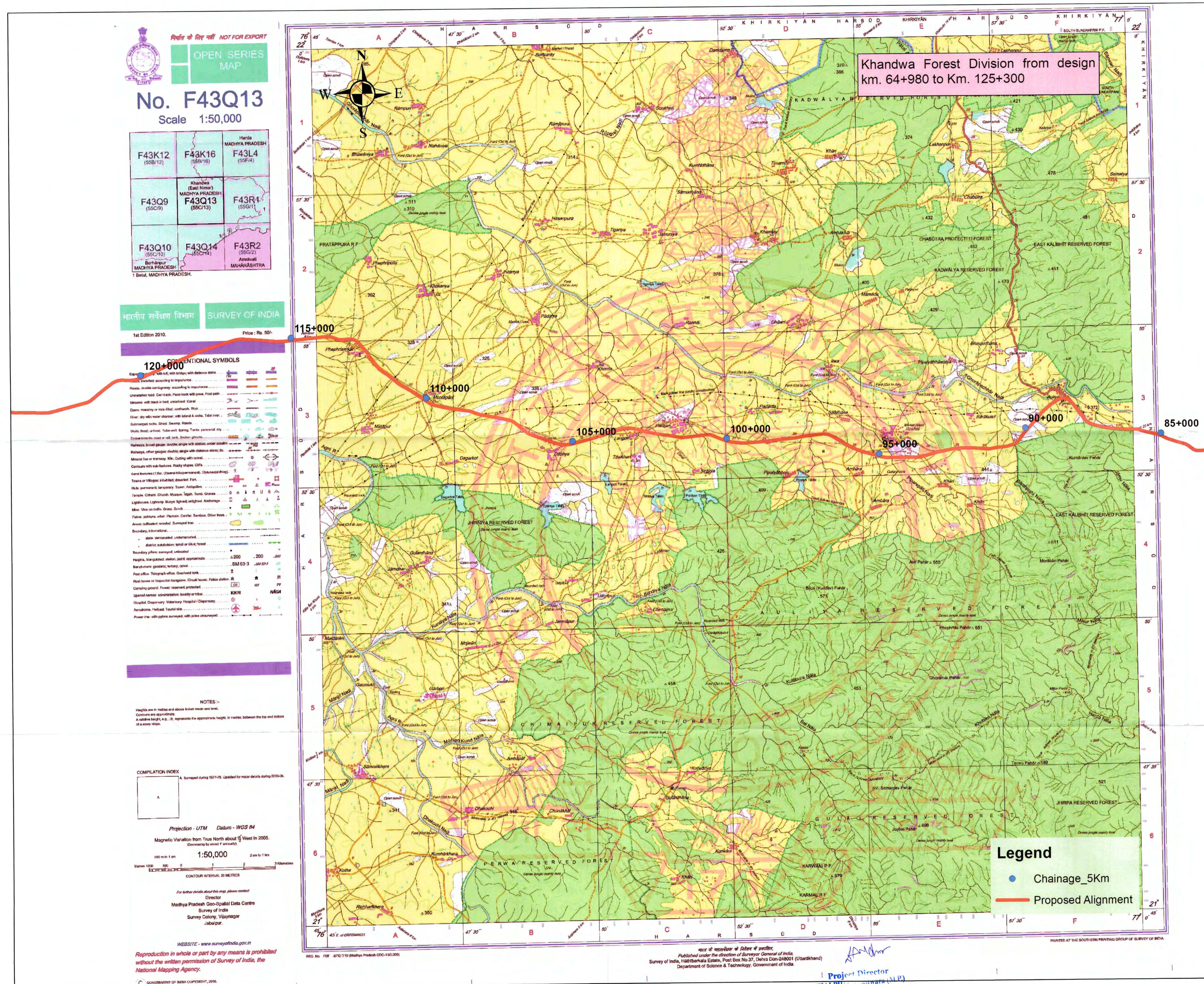
End of West Betul Forest Division
 at Km 64+980

Khandwa Forest Division from design
 km. 64+980 to Km. 125+300

Legend
 ● Chainage_5Km
 — Proposed Alignment

Project Director
 NHAI/PIU Chhindwara (M.P.)

4 laning of Betul-Khandwa Section of National Highway(NH-347B) from Betul Design Ch 0+000 to Khandwa Design Ch 125+300 (length-125.300 km) under BHARATMALA Pariyojana Feeder route (Phase- I) in the State of Madhya Pradesh on Hybrid Annuity Mode



4 laning of Betul-Khandwa Section of National Highway(NH-347B) from Betul Design Ch 0+000 to Khandwa Design Ch 125+300 (length-125.300 km) under BHARATMALA Pariyojana Feeder route (Phase- I) in the State of Madhya Pradesh on Hybrid Annuity Mode



OPEN SERIES MAP
No. F43Q9
Scale 1:50,000

F43K8 (55B/8)	F43K12 (55B/12)	F43K16 (55B/16)
F43Q5 (55C/5)	F43Q9 (55C/9)	F43Q13 (55C/13)
F43Q6 (55C/6)	F43Q10 (55C/10)	F43Q14 (55C/14)

1 Betul, MADHYA PRADESH. 2 Haidra, MADHYA PRADESH.

भारतीय सर्वेक्षण विभाग SURVEY OF INDIA
1st Edition 2005. Price: Rs. 50/-

CONVENTIONAL SYMBOLS

Figures highway with toll with tollage with distance stone	[Symbol]
Roads, roadless according to importance	[Symbol]
Roads, double carriageway, according to importance	[Symbol]
Unsurfaced road, Carriageway, Paved road with path, Foot path	[Symbol]
Streams with track in bed, unbridged, Canal	[Symbol]
Canal, secondary or sub-flood, outfalls, Weir	[Symbol]
Head, dry with water channel, with island & oases, Tidal river	[Symbol]
Submerged roads, Road, Swamp, Roads	[Symbol]
Walls, lined, unlined, Tube-well, Spring, Tank, generalist city	[Symbol]
Construction road or rail, track, Broken ground	[Symbol]
Railways, broad gauge, double track with station, other gauges	[Symbol]
Railways, other gauges, single track with distance stone, etc.	[Symbol]
Mineral line or tramway, Kin, Cutting with tunnel	[Symbol]
Contours with sub-basins, Rocky slopes, Cuts	[Symbol]
Sand barrens (Tidal, (Zandi-salt-pan), (Shimshaping))	[Symbol]
Towns or Villages, inhabited, deserted, Fort	[Symbol]
Wells, permanent temporary, Trench, Archaic	[Symbol]
Temples, Chhatra, Mosque, Ghat, Tomb, Crematorium	[Symbol]
Lighthouse, Lighted, Daylight, unlighted, Archway	[Symbol]
Mine, View on India, Green, Sand	[Symbol]
Public paths, other, Mason, Counter, Bamboo, Other trees	[Symbol]
Areas, cultivated, wooded, Surveyed line	[Symbol]
Boundary, international	[Symbol]
State, disconnected, undetermined	[Symbol]
idiot, substation, tank or well, farm	[Symbol]
Boundary pillar, surveyed, unlocated	[Symbol]
Height, triangulation station, point, approximate	[Symbol]
March mark, gnomonic, better, cone	[Symbol]
Foot, other, triangulation station, Control mark	[Symbol]
Field houses or inspection buildings, Control house, Public station	[Symbol]
Camping ground, Forest reserved, protected	[Symbol]
Special reserve, administrative, locality or tribal	[Symbol]
Hospital, Dispensary, Veterinary, Hospital, Dispensary	[Symbol]
Aerodrome, Helipad, Tourist site	[Symbol]
Power line, with pylons surveyed, with poles unlocated	[Symbol]

NOTES:-
Height in metres and above Indian mean sea level.
Contours are approximate.
Elevation height, e.g., 100 represents the approximate height, in metres, between the top and bottom of a steep slope.

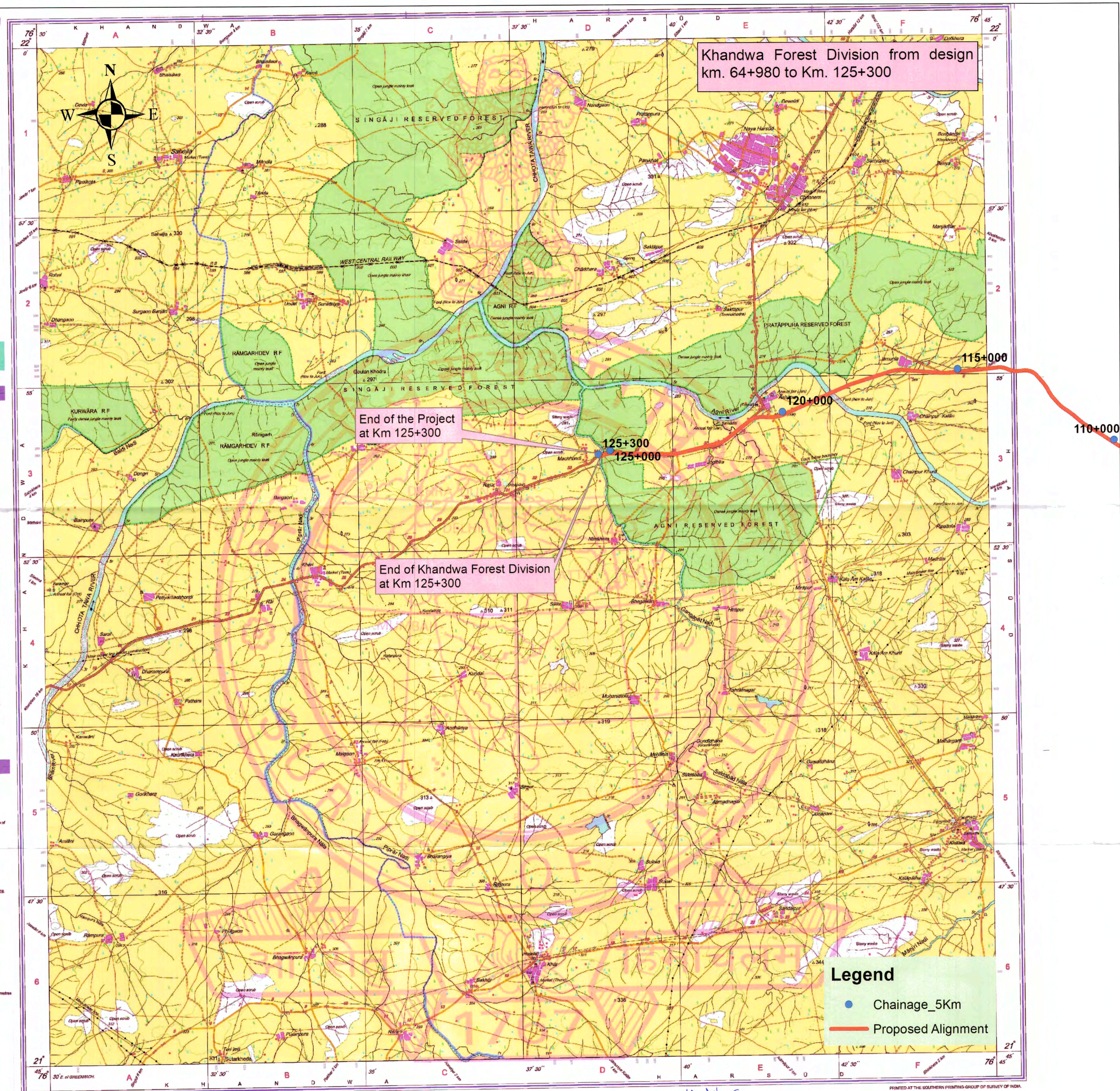
COMPILED INDEX
A. Surveyed during 1977-78. Updated for minor details during 2005-08.

Projection - UTM Datum - WGS 84
Magnetic Variation from True North about 1/2° West in 2005.
(Decreasing by about 1' annually.)
1:50,000
Scale 1:50,000
CONTOUR INTERVAL 20 METRES

For further details about this map please contact
Director
Madhya Pradesh Geo-Spatial Data Centre
Survey of India
Survey Colony, Vijaynagar
Jabalpur
Fax: 0761 - 2644683

WEBSITE - www.surveyofindia.gov.in

Reproduction in whole or part by any means is prohibited without the written permission of Survey of India, the National Mapping Agency.



Printed at the Southern Printing Group of Survey of India.
Survey of India, Haidra, Post Box No. 37, Delhi-110001 (Uttarakhand)
Department of Science & Technology, Government of India.

Project Director
NHAI, Pili Chhindwara (M.P.)