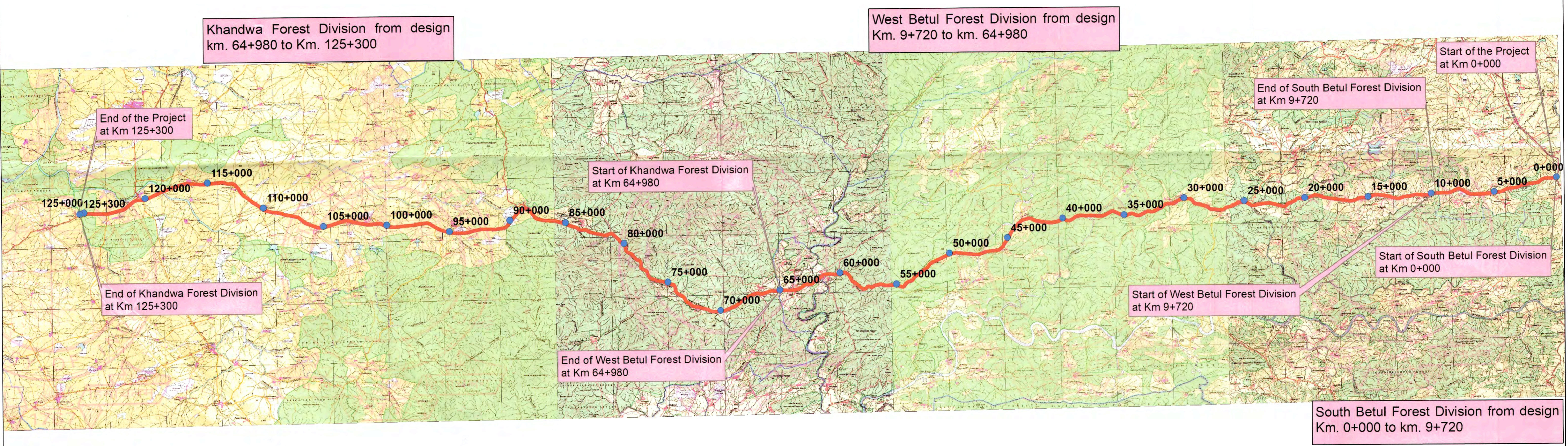


4 laning of Betul-Khandwa Section of National Highway(NH-347B) from Betul Design Ch 0+000 to Khandwa Design Ch 125+300 (length-125.300 km) under BHARATMALA Pariyojana Feeder route (Phase- I) in the State of Madhya Pradesh on Hybrid Annuity Mode

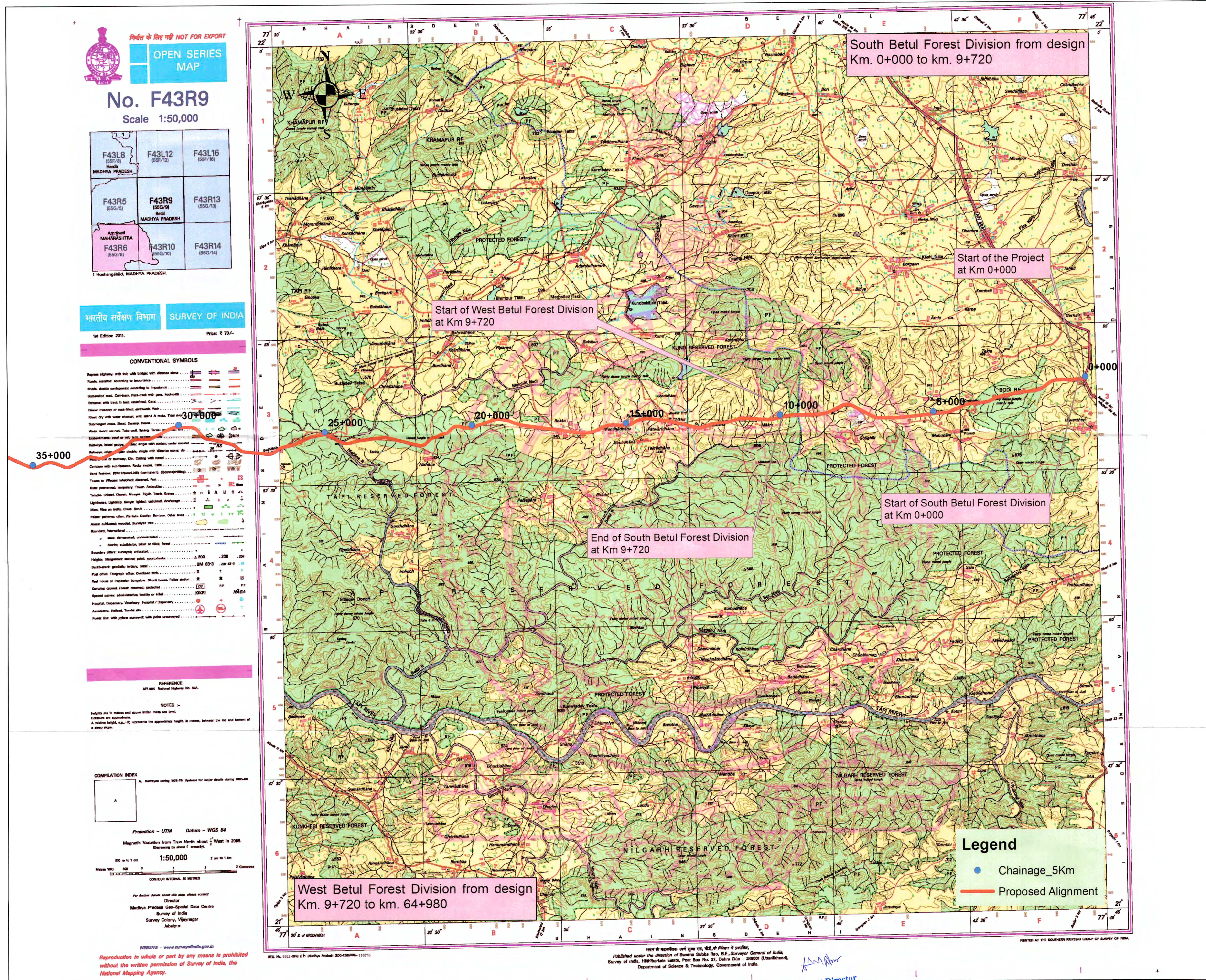


Legend

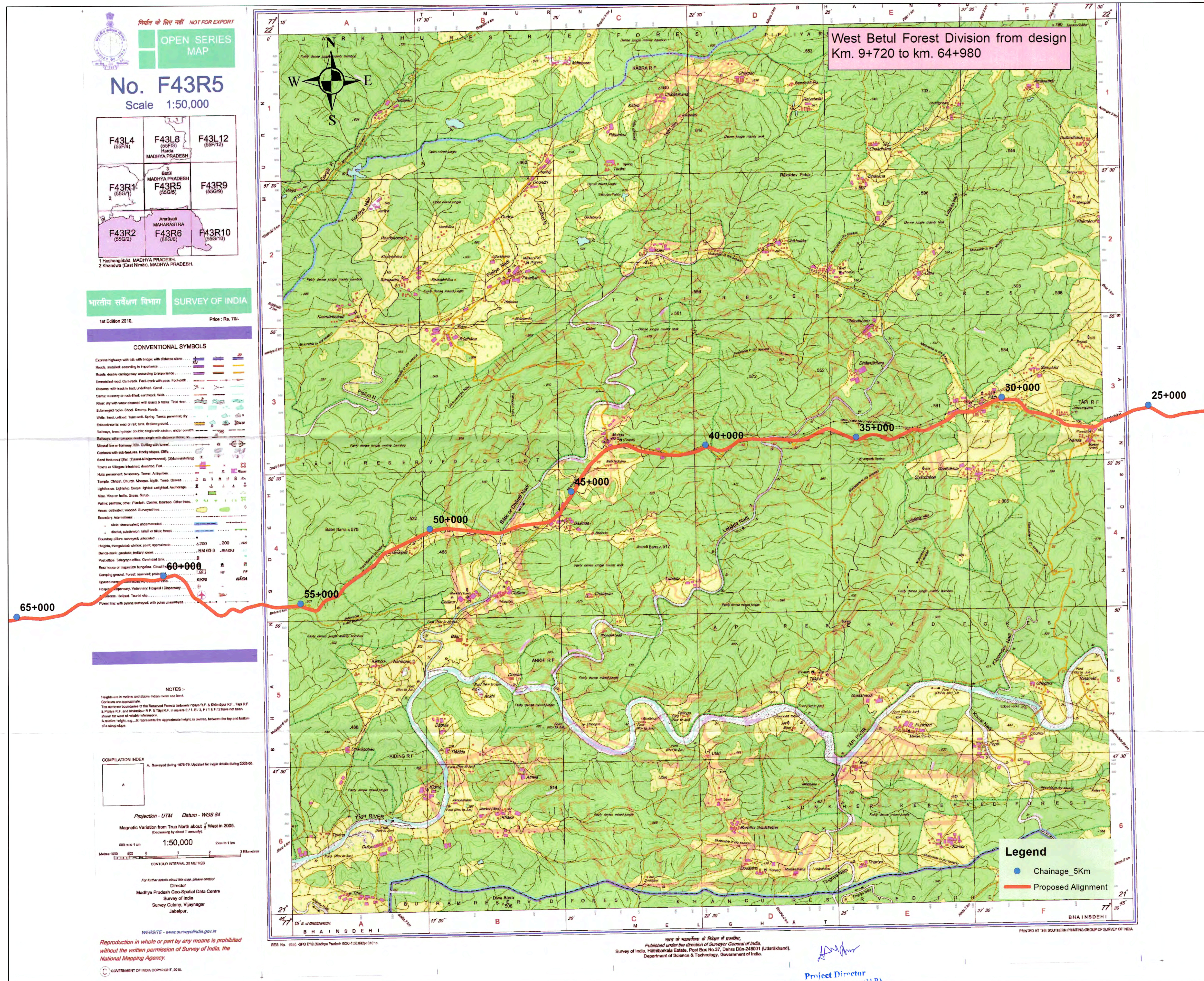
- Chainage_5Km
- Proposed Alignment

Signature
 Project Director
 NH-347B, Khandwa (M.P.)

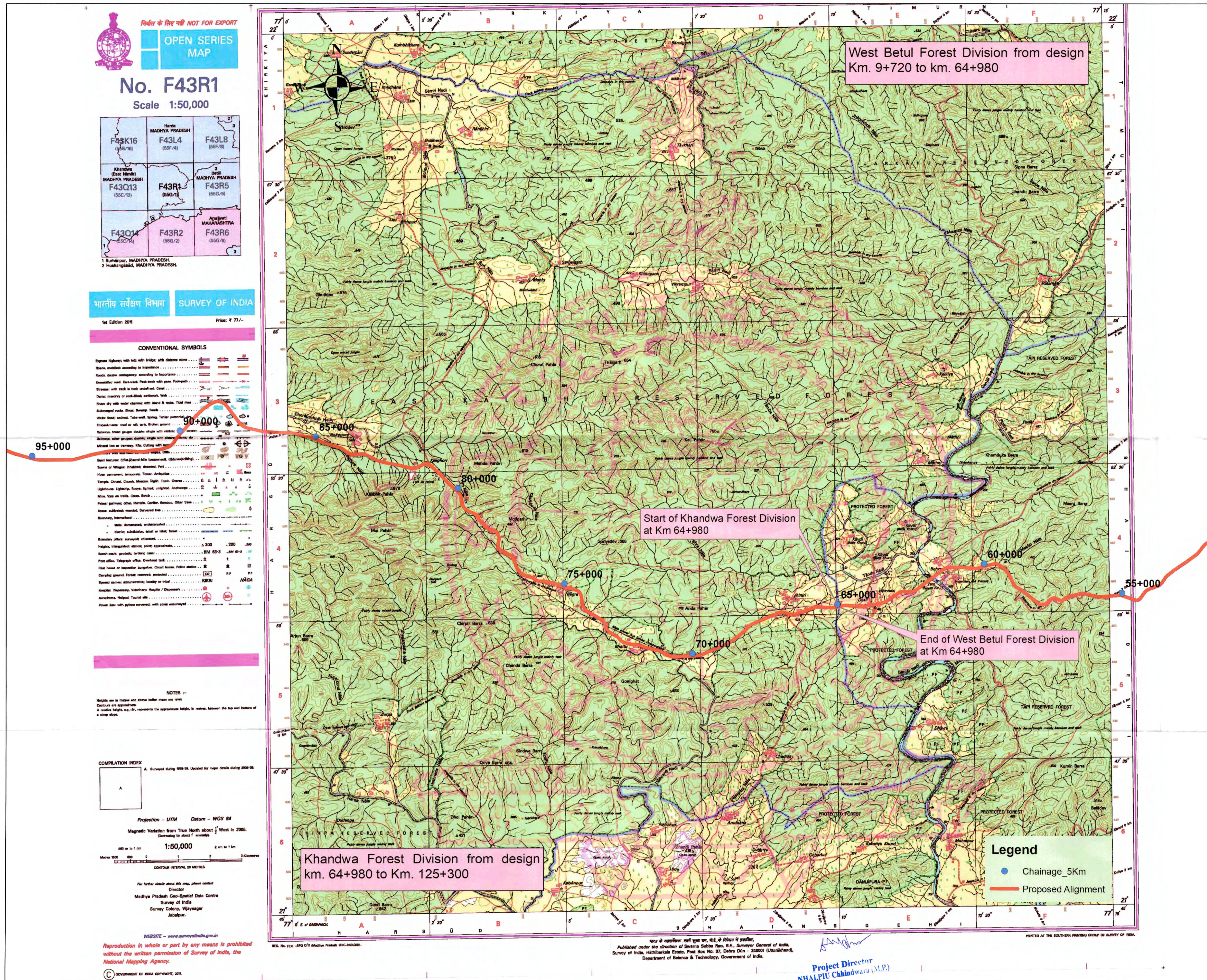
4 laning of Betul-Khandwa Section of National Highway(NH-347B) from Betul Design Ch 0+000 to Khandwa Design Ch 125+300 (length-125.300 km) under BHARATMALA Pariyojana Feeder route (Phase- I) in the State of Madhya Pradesh on Hybrid Annuity Mode



4 laning of Betul-Khandwa Section of National Highway(NH-347B) from Betul Design Ch 0+000 to Khandwa Design Ch 125+300 (length-125.300 km) under BHARATMALA Pariyojana Feeder route (Phase- I) in the State of Madhya Pradesh on Hybrid Annuity Mode



4 laning of Betul-Khandwa Section of National Highway(NH-347B) from Betul Design Ch 0+000 to Khandwa Design Ch 125+300 (length-125.300 km) under BHARATMALA Pariyojana Feeder route (Phase- I) in the State of Madhya Pradesh on Hybrid Annuity Mode



निर्वाह के लिए नहीं NOT FOR EXPORT
OPEN SERIES MAP

No. F43R1
 Scale 1:50,000

F43K16 (55B/16)	Madhya Pradesh F43L4 (55F/4)	F43L8 (55F/8)
Khandwa (East West) MADHYA PRADESH F43Q13 (55C/13)	F43R1 (55G/1)	Madhya Pradesh F43R5 (55G/5)
F43Q14 (55C/14)	F43R2 (55G/2)	Andhra Pradesh F43R6 (55G/6)

1. Bunkhaur, MADHYA PRADESH.
 2. Hoshangabad, MADHYA PRADESH.

भारतीय सर्वेक्षण विभाग SURVEY OF INDIA
 1st Edition 2011. Price: ₹ 77/-

CONVENTIONAL SYMBOLS

Express highway with toll with bridge with distance stone	
Road, metalled, according to importance	
Road, unmetalled according to importance	
Unmetalled road, Cart-track, Post-road with paved foot-path	
Stream with track to back, unfordable, Canal	
Dam, masonry or rock, dam, concrete, Weir	
River dry with water channel with island & rocks, Tidal river	
Submerged rock, Shoal, Swamp, Fresh	
Rock bank, exposed, Tidal bank, Tidal point, Tidal point	
Rock bank, exposed, Tidal bank, Tidal point, Tidal point	
Waterfall, broad, narrow, double, single with water	
Waterfall, other, single, double, single with water	
Mixed line or tramway, etc., Cutting with	
Open forest, (Shaded) (Unshaded) (Unshaded) (Unshaded)	
Town or Village, inhabited, deserted, Fort	
Hamlet, permanent, temporary, Tower, Ambulance	
Temple, Church, Mosque, Ghat, Tank, Crematorium	
Lighthouse, Lightship, Beacon, Lighted, unlighted, Anchorage	
Min. Mine on surface, Open, Shaft	
Power station, other, Thermal, Coal, Diesel, Other, Other	
Area, cultivated, wooded, Surveyed tree	
Boundary, International	
State, demarcated, undemarcated	
State, demarcated, undemarcated	
Boundary, official, surveyed, unsurveyed	
Height, trigonometrical, aneroid, aneroid, approximate	
Spot height, aneroid, aneroid, approximate	
Post office, Telegraph office, District head, Police station	
Post house or inspection bungalow, Check house, Police station	
Camping ground, Forest reserved, reserved	
Special reserve, agricultural, forestry or other	
Reserve, temporary, temporary, temporary, temporary	
Reserve, temporary, temporary, temporary, temporary	
Power line, with poles, overhead, with poles, underground	

NOTES :-
 Heights are in metres and shown in feet when not shown.
 Contours are approximate.
 A white height, e.g. 50, represents the approximate height, in metres, between the top and bottom of a steep slope.

COMPLETION INDEX
 A. Surveyed during 1979-79. Updated for minor details during 2000-06.

Projection - UTM Datum - WGS 84
 Magnetic Variation from True North about 1/2° West in 2005.
 Decreases by about 1" annually.
 Scale 1:50,000
 Contour Interval 20 METRES

For further details about this map, please contact:
 Director
 Madhya Pradesh Geo-Spatial Data Centre
 Survey of India
 Survey Colony, Vijaynagar
 Jabalpur.
 WEBSITE - www.surveyofindia.gov.in
 Reproduction in whole or part by any means is prohibited without the written permission of Survey of India, the National Mapping Agency.
 GOVERNMENT OF INDIA COPYRIGHT, 2011

West Betul Forest Division from design
 Km. 9+720 to km. 64+980

Start of Khandwa Forest Division
 at Km 64+980

End of West Betul Forest Division
 at Km 64+980

Khandwa Forest Division from design
 km. 64+980 to Km. 125+300

Legend
 ● Chainage_5Km
 — Proposed Alignment

Project Director
 NHAI/PIU Chhindwara (M.P.)