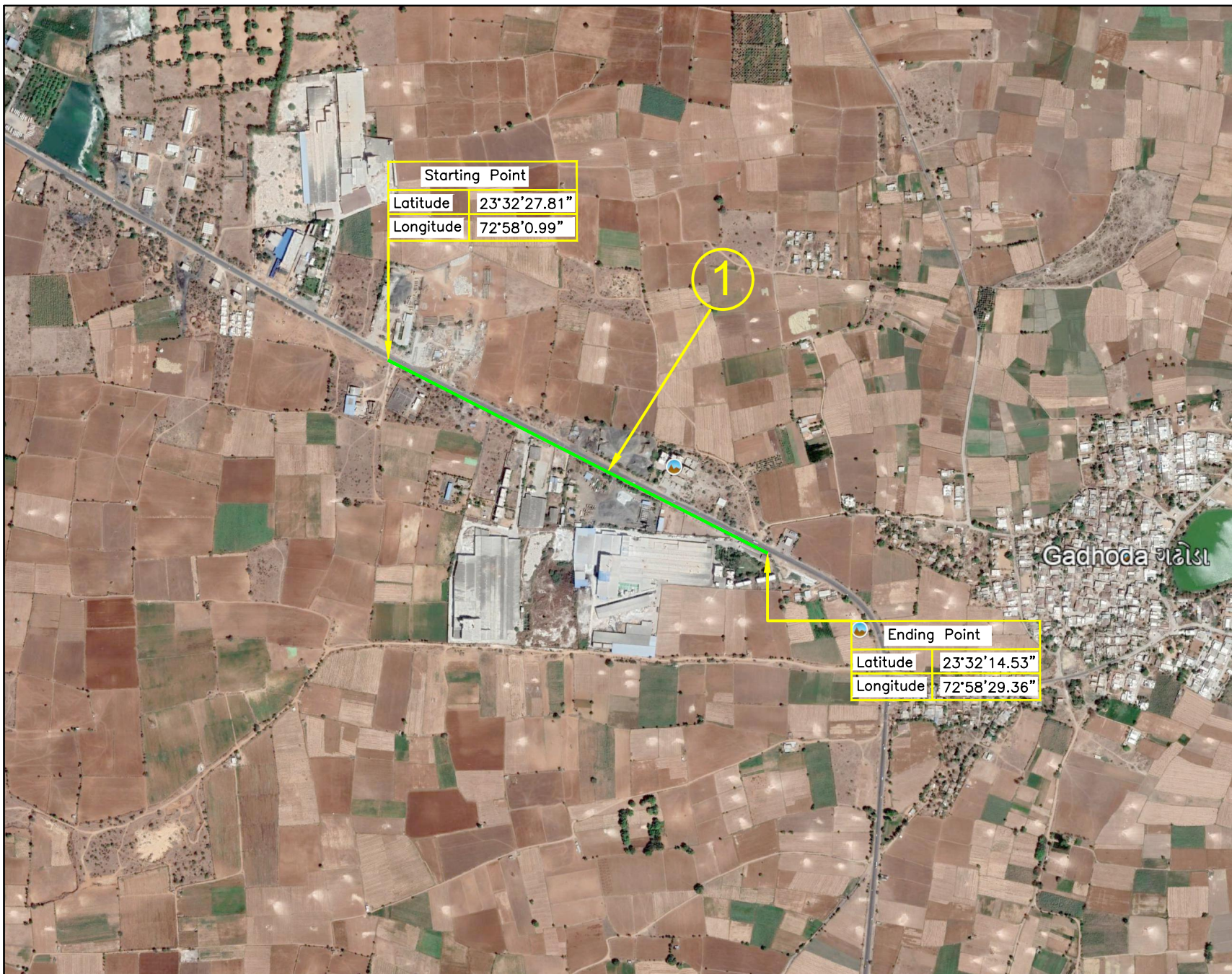




TALUKA-HIMATNAGAR



| Starting Point |              |
|----------------|--------------|
| Latitude       | 23°32'27.81" |
| Longitude      | 72°58'0.99"  |

| Ending Point |              |
|--------------|--------------|
| Latitude     | 23°32'14.53" |
| Longitude    | 72°58'29.36" |

(1) Parallel to Himmatnagar- Talod Road  
SH-237 Protected Forest @ch 0 to  
@ch 900, Length = 900M

| Starting Point |              | Ending Point |              |
|----------------|--------------|--------------|--------------|
| Latitude       | 23°32'27.81" | Latitude     | 23°32'14.53" |
| Longitude      | 72°58'0.99"  | Longitude    | 72°58'29.36" |

**LEGEND**

PROPOSED GAS PIPELINE

PROJECT :  
90MM DIA MDPE GAS PIPELINE CONNECTIVITY FOR  
ORACLE INDUSTRIES TA. HIMMATNAGAR DIST.: SABARKANTHA

CLIENT :  
**SABARMATI GAS LTD.**  
 SECTOR-21, GANDHINAGAR

CONSULTANTS :  
**Multi Mantech International Pvt. Ltd.**  
 M-SQUARE, MILLENIUM PLAZA, JUDGES BUNGALOWS ROAD,  
 VASTRAPUR, AHMEDABAD-380 015, INDIA.  
 PH. : 91-79-26750515, 26750516, 26750517. FAX : 91-79-26764099  
 E-mail : info@mnmpl.in

TITLE : **GEO MAP**

|                     |                         |              |
|---------------------|-------------------------|--------------|
| DRAWN BY : VASANT   | EXAMINED BY : D.H.JOSHI | REV.         |
| SURVEY BY : SUDHIR  |                         | 0            |
| CHECKED BY : SUDHIR | PROJ. CODE              | DRG. NO.     |
| SCALE = 1 : 50      | SGL/215.4.27            | MMSGLOIPLGEO |
| DATE : 13/05/2022   |                         |              |