

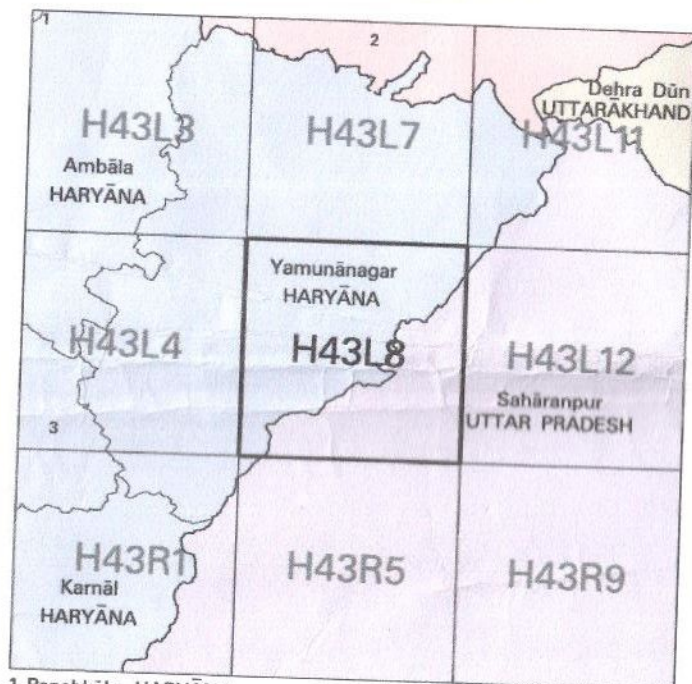


NOT FOR EXPORT

OPEN SERIES
MAP

No. H43L8

Scale 1:50,000



- 1 Panchkula, HARYANA.
2 Sirmaur, HIMACHAL PRADESH.
3 Kurukshetra, HARYANA.

भारतीय सर्वेक्षण विभाग

SURVEY OF INDIA

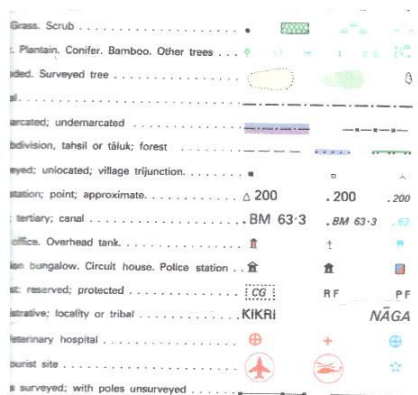
1st Edition 2007.

Price : Rs. 50/-

CONVENTIONAL SYMBOLS

- Express highway: with toll; with bridge; with distance stone 20
Roads, metalled: according to importance Toll
Roads, double carriageway: according to importance
Unmetalled road, Cart-track, Pack-track with pass, Foot-path
Streams: with track in bed; undefined. Canal
Dams: masonry or rock-filled; earthwork. Weir
River: dry with water channel; with island & rocks. Tidal river
Submerged rocks, Shoal, Swamp, Reeds
Wells: lined; unlined. Tube-well. Spring. Tanks: perennial; dry
Embankments: road or rail; tank. Broken ground
Railways, broad gauge: double; single with station; under constrn. 20 RS
Railways, other gauges: double; single with distance stone; do
Mineral line or tramway. Kiln. Cutting with tunnel
Contours with spot heights





REFERENCE

NH 73 National Highway No. 73

all above Indian mean sea level.
marked along a canal, indicates the height of the top of the canal embankment
areas usually contain water from July to March.
tracks in this sheet are generally motorable in dry season. Permission to use
gained from the irrigation authorities.
Yamuna River is liable to change owing to continual fluctuation in the course of
1,000 feet apart and every fifth existing stone is shown.
lines of Bhakra Dam Project Survey are shown as tertiary bench-mark
285-4.

EX
A. Surveyed during 1989-90. Updated for major details during 2005-06.

projection - UTM Datum - WGS 84
Variation from True North about 1° East in 2000.
(increasing by about 2' annually).

1:50,000

2 cm to 1 km

CONTOUR INTERVAL 10 METRES

Further details about this map, please contact
Director
Haryana Geo-Spatial Data Centre
Survey of India, Sector 32 A
Chandigarh.
Fax : 0172 - 2604671

WEBSITE - www.surveyofindia.gov.in

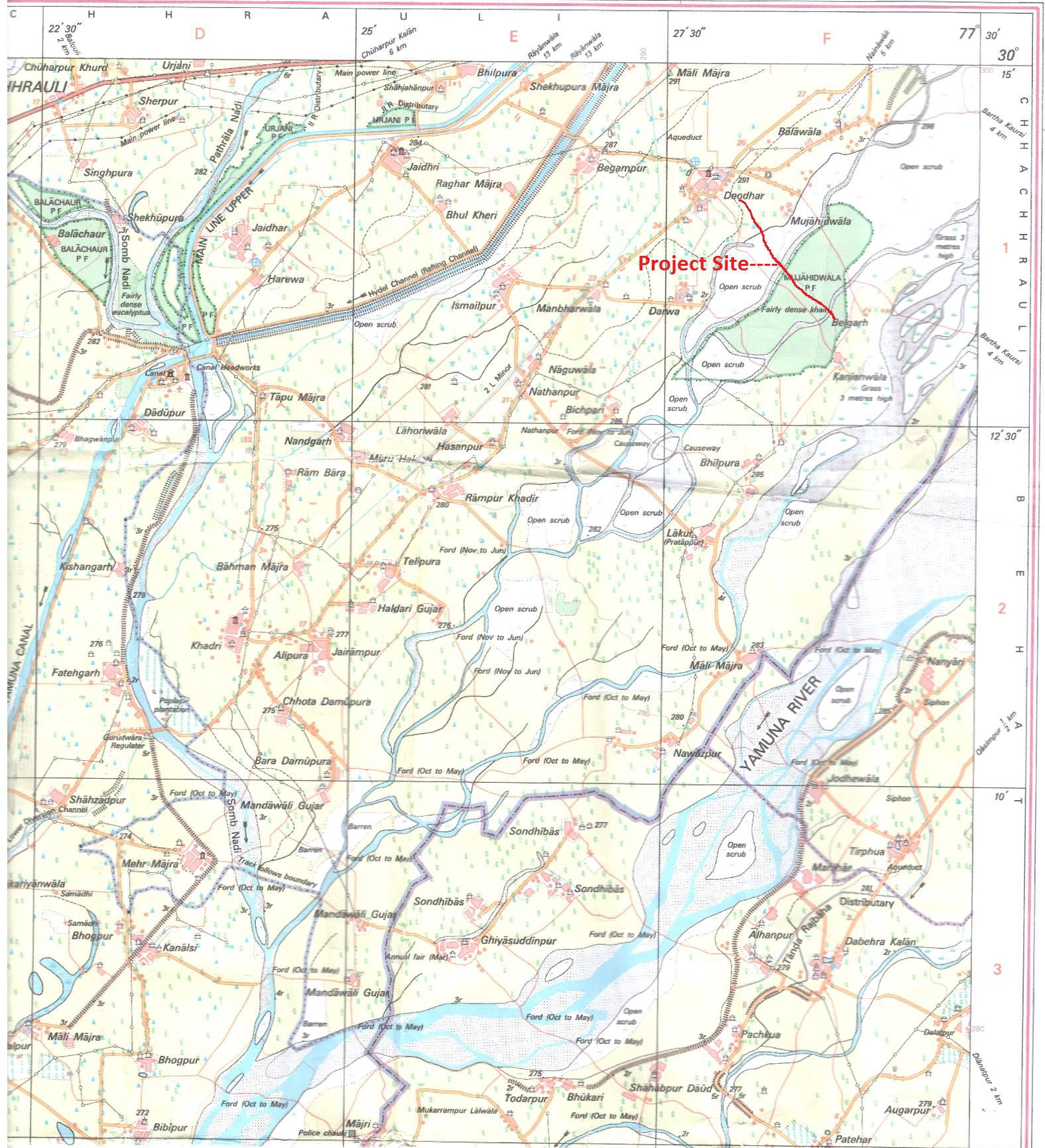
whole or part by any means is prohibited
ten permission of Survey of India, the
g Agency.

INDIA COPYRIGHT, 2007.



REG. No. -WPG D 07 (Haryana GDC-1:50,000)

भारत के महसूरीयक मेजर जनरल ए
Published under the direction of Major
Survey of India





म०, पी. जी. वि० (एरियल फोटो), एम०आई०एम०आई०, एम०सी०एम०, एफ०आई०एम०, के निदेशन में प्रकाशित,
 म० Rao, B.Tech., P.G.Dip. (Aerial Photo), MIME, MCA, FIS, Surveyor General of India,
 Estate, Post Box No. 37, Dehra Dun - 248001 (Uttarakhand)
 Science & Technology, Government of India.

PRINTED AT THE WESTERN PRINTING GROUP OF SURVEY OF INDIA.

SAHARANPUR
 20/1/14