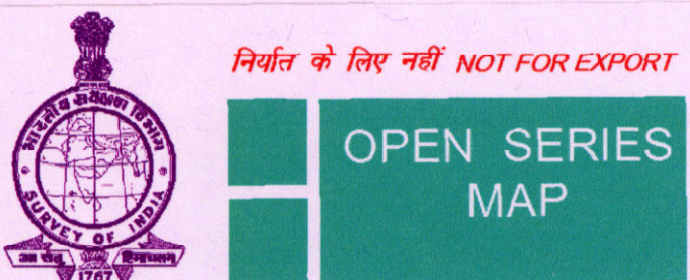


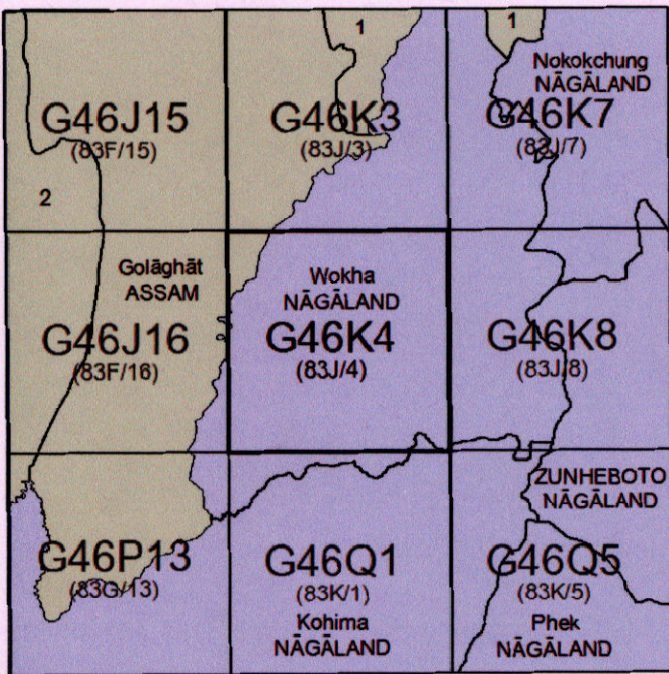
MAP SHOWING THE 1.69 HECTARE ( PLINTH AREA =1.55 & APPROACH ROAD = 0.14) SUPHAYAM-1 LOCATION DIVERSION AREA AT DOYANG R.F

UNDER GOLAGHAT DIVISION, GOLAGHAT

SCALE:- 1:50,000



No. G46K4  
Scale 1:50,000



1 Sibsaigar, ASSAM.  
2 Kārbi Anglong, ASSAM.

भारतीय सर्वेक्षण विभाग SURVEY OF INDIA

1st Edition 2011.

Price: Rs. 77/-

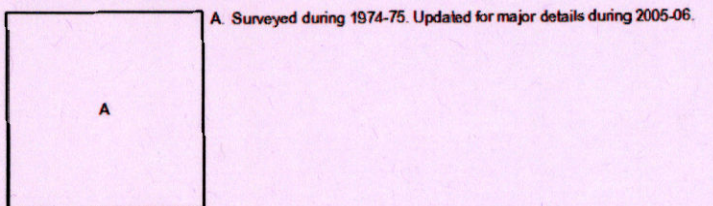
CONVENTIONAL SYMBOLS

- Express highway with toll, with bridge, with distance stone
- Roads, metalled according to importance
- Roads, double carriageway, according to importance
- Unmetalled road. Cart track. Pack track with pass. Foot path.
- Steamer with track in bed, undefined Canal
- Dam: masonry or rock-filled, earthenwork Weir
- River with water channel, with island & rocks. Total river.
- Submerged rocks Shoal Swamp Roads
- Wells lined, unlined Tube-well Spring Tanks perennial, dry
- Embankments: road or rail, tank Broken ground
- Railways, broad gauge: double, single with distance stone, do
- Railways, other gauges: double, single with distance stone, do
- Mineral line or tramway. Kān. Cutting with tunnel
- Contours with and without. Rocky slopes. Cliff
- Sand features (Rise of sand/dunes/shifting) (Shifting/shifting)
- Towns or Villages: inhabited, deserted, Fort
- Hole, permanent, temporary, Tower, Aqueduct
- Temple, Chhāl, Church, Mosque, Igāl, Tomb, Grave
- Lighthouse, Lightship, Buoy, lighted, unlighted Anchorage
- Mine, View on hills, Grass, Scrub
- Palms, palms, other Plantain, Conifer, Bamboo, Other trees
- Areas cultivated, wooded, Surveyed line
- Boundary, international
- State, demarcated, undemarcated
- Subdivision, subunit, subunit or block, forest
- Boundary pillars: surveyed, unlocated
- Height, triangulated, station, point, approximate
- BM 63-3, BM 63-3, BM 63-3
- Post office, Telegraph office, Overhead tank
- Rest house or inspection bungalow, Circuit house, Police station
- Camping ground, Forest reserved, protected
- Spaced names: administrative, locality or tribal
- Hospital, Dispensary, Veterinary Hospital / Dispensary
- Aerodrome, Helipad, Tourist site
- Power line with pylons surveyed, with poles unsurveyed

NOTES :-

Heights and contours have not been shown.  
A relative height, e.g., 50, represents the approximate height, in metres, between the top and bottom of a steep slope.  
The inter-state boundary between Assam and Nagaland States, shown in this map as an interpreted from North Eastern Area (Recognition) Act 1971 but has yet to be verified.  
The District boundary between Kokrajhar and Wokha district of Nagaland state shown in this sheet is as interpreted from the Nagaland Government Notification no. APA-15/12/71, dated 19-12-73 but has yet to be verified on the ground as well as by the district authorities.  
Subdivision boundary of Simali sub-division in Wokha district has been shown in the sheet vide verified map but not yet authorised by the concerned authority.  
Jhum or temporarily cultivated areas occur throughout the jungle, they are normally abandoned after 2-3 years and are not shown.

COMPILATION INDEX



Projection - UTM Datum - WGS 84

Magnetic Variation from True North about West in 2005.

1:50,000

500 m to 1 cm 2 cm to 1 km

For further details about this map, please contact

Director

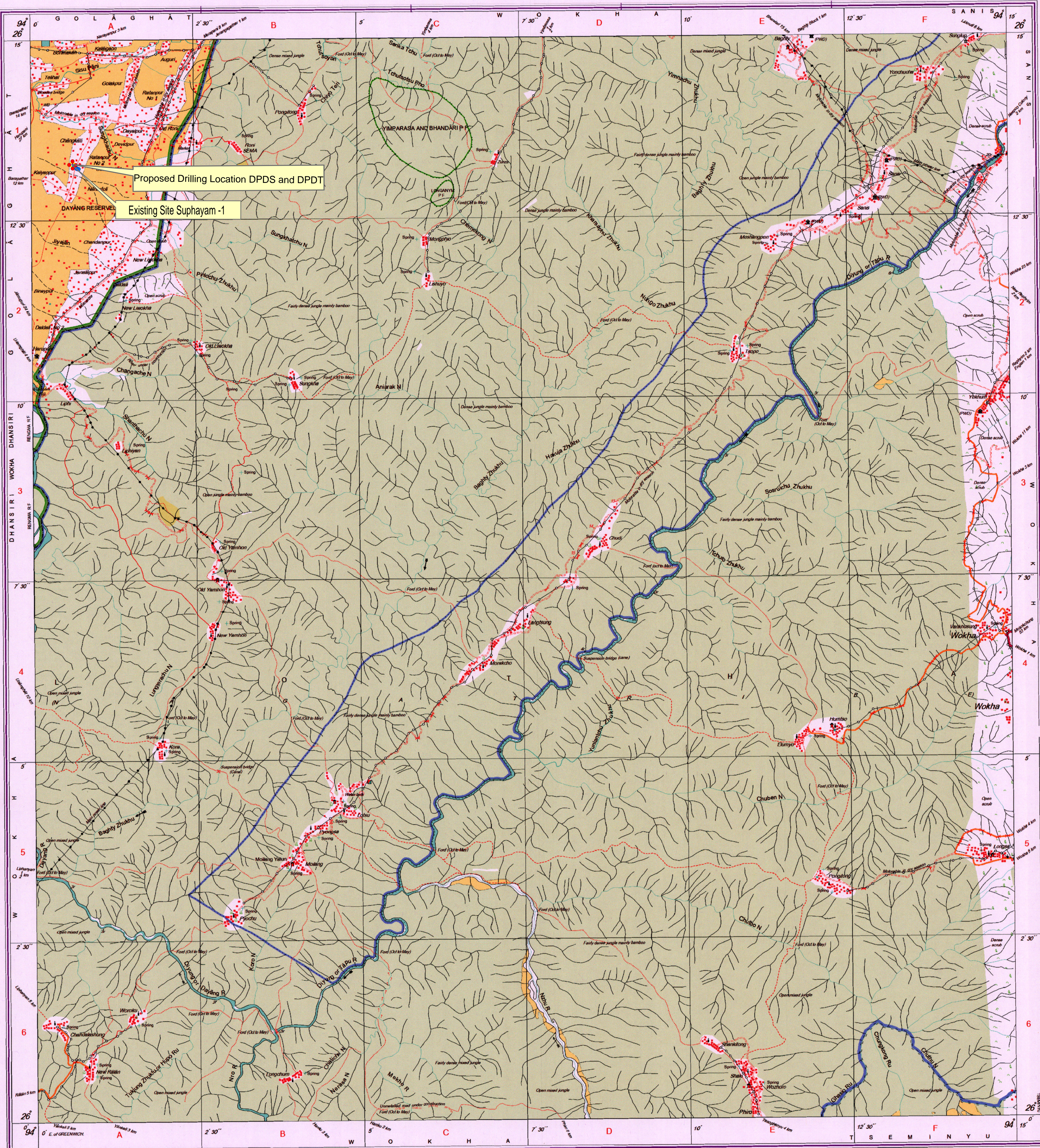
Assam & Nagaland Geo-Spatial Data Centre

Survey of India, Gangachari, Dispur

Guwahati.

WEBSITE - www.surveyofindia.gov.in

Reproduction in whole or part by any means is prohibited without the written permission of Survey of India, the



LEGEND

- TOTAL STATION POINTS (PLINTH AREA)PROPOSED
- PLINTH AREA
- TOTAL STATION POINTS (APPROACH ROAD AREA)
- PROPOSED APPROACH ROAD
- PROPOSED LOCATION DPDS - 26°13'16.03"N 94°0'38.28"E
- PROPOSED LOCATION DPDT - 26°13'16.72"N 94°0'37.56"E
- EXISTING SITE SUPHAYAM -11

TOTAL STATION CO-ORDINATE READINGS OF THE PROPOSED AREA

TOTAL STATION POINTS	LONGITUDE	LATITUDE	AREA (Ha)	NAME OF LOCATION
A	94° 0' 41.199" E	26° 13' 16.444" N	1.55	SUPHAYAM-1
B	94° 0' 38.309" E	26° 13' 19.501" N		
C	94° 0' 35.179" E	26° 13' 16.537" N		
D	94° 0' 38.296" E	26° 13' 13.490" N		

TOTAL STATION CO-ORDINATE READINGS OF THE PROPOSED APPROACH ROAD

TOTAL STATION POINTS	LONGITUDE	LATITUDE	TOTAL STATION POINTS	LONGITUDE	LATITUDE	AREA (Ha)	NAME OF LOCATION
1	94° 0' 39.880" E	26° 13' 15.102" N	6	94° 0' 43.592" E	26° 13' 12.702" N	0.14	SUPHAYAM-1
2	94° 0' 40.617" E	26° 13' 14.575" N	7	94° 0' 42.230" E	26° 13' 13.101" N		
3	94° 0' 41.643" E	26° 13' 13.886" N	8	94° 0' 41.415" E	26° 13' 13.592" N		
4	94° 0' 42.405" E	26° 13' 13.425" N	9	94° 0' 40.405" E	26° 13' 14.269" N		
5	94° 0' 43.766" E	26° 13' 13.025" N	10	94° 0' 39.617" E	26° 13' 14.832" N		

Niva Moni Tamuli  
GM (P) Head HSE  
ONGC, JORHAT ASSET, ASSAM