

Name of Project: Diversion of 0.49 Ha. Reserved Forest Land for 66 KV Munpur Substation At. Munpur, Ta. : Kadana, Dist.: Mahisagar in Favor of Gujarat Energy Transmission Corporation Limited (GETCO) Jambuva (Vadodara).

निर्यात के लिए नहीं NOT FOR EXPORT.

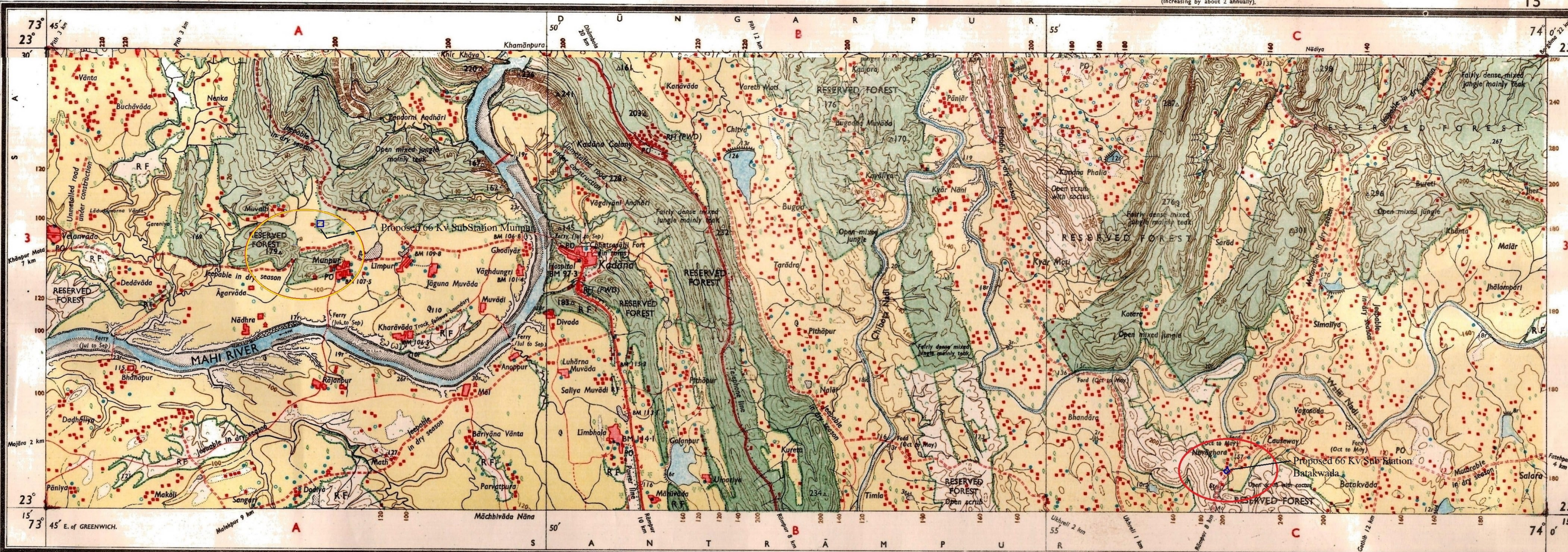
PANCH MAHALS DISTRICT.
BANSWARA & DUNGARPUR DISTRICTS.

Surveyed 1967-68.

GUJARAT, RAJASTHAN

FIRST EDITION
Magnetic Variation from True North about 1° West in 1965.
(Increasing by about 1/2 annually).

SHEET 46 E/15 FIRST EDITION
No. 46 E/15

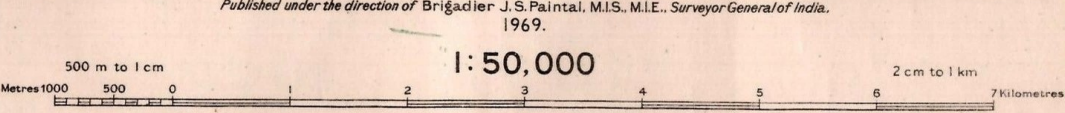


Res. No. 2031 HD/69 (D.O. 3-1-33,333)-662'74-3304'80-4506'88-7010'2001.

Roads, metalled: according to importance; distance stone	20
unmetalled: do. do. bridge	20
Cart-track, Pack-track and pass. Foot-path with bridge	20
Bridges: with piers: without. Causeway. Ford or Ferry	20
Streams: with track in bed: undefined. Canal	20
Dams: masonry or rock-filled: earthwork Weir	20
River banks: shelving: steep 3 to 6 metres: over 6 metres	20
dry with water channel: with island & rocks Tidal river	20
Submerged rocks. Shoal. Swamp. Reeds	20
Wells: lined: unlined Tube-well. Spring. Tanks: perennial: dry	20
Embankments: road or rail, tank. Broken ground	20
Railways: broad gauge: double: single with station: under constr.	20
other gauges: do. do. with distance stone: do.	20
Mineral line or tramway. Telegraph line. Cutting with tunnel	20
Contours with sub-features Rocky slopes. Cliffs	20
Sand features: flat: dunes: shifting dunes	20

Index to Sheets

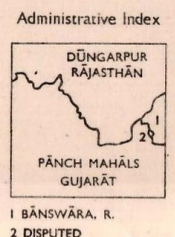
46 E/10	46 E/14	46 E/2
46 E/11	46 E/15	46 E/3
46 E/12	46 E/16	46 E/4



HEIGHTS & CONTOURS IN METRES
CONTOUR INTERVAL 20 METRES

Water features are shown in blue where they generally contain water.
Cultivated areas are coloured yellow.
The exterior boundaries of areas of Reserved or Protected Forests are shown by green ribands.

Contours are approximate.
A relative height, ΔR , represents the approximate height, in metres, between the top and bottom of a steep slope.
Wooded areas are coloured green. Scattered trees and other vegetation are in green, but prominent surveyed trees are in black.



PRINTED AT THE 101 (H.L.Q.) PRINTING GROUP OF SURVEY OF INDIA

Towns or Villages: inhabited: deserted: Fort	20
Huts: permanent: temporary. Tower. Antiquities	20
Temple. Chhatra. Church. Mosque. Idgh. Tomb. Graves	20
Lighthouse. Lightship. Buoy: lighted: unlighted. Anchorage	20
Mine. Vine on trellis. Grass. Scrub	20
Palms: palmyra: other. Plantain. Conifer. Bamboo. Other trees	20
Boundary: international	20
state: demarcated: undemarcated	20
district: subdiv. tahsil or taluk: forest	20
Boundary pillars: surveyed: unlocated: village trijunction	20
Heights: triangulated: station: point: approximate	200
Bench-mark: geodetic: tertiary: canal	BM 63.3
Post office. Telegraph office. Combined office. Police station	PO TO PTO
Bungalows: dak or travellers: inspection. Rest-house	DB IB (Canal) RH (Fo)
Circuit house. Camping ground. Forest: reserved: protected	CH CG RF
Spaced names: administrative, locality or tribal	KIKRI NA

REFER TO THIS MAP AS - 1:50,000
SHEET 46 E/15 FIRST EDITION
INDIA

REFERENCE
PROPOSED GETCO 66KV Substation Location
At. Munpur, Ta. : Kadana, Dist.: Mahisagar

The triangulated heights and contours in this sheet have not been adjusted to the heights of the spirit-levelled bench-marks and may not be strictly in accordance with them.
The kilometre stone numbers along roads are shown in slant type, e.g., 'S' whereas milestone numbers are shown in upright type, e.g., '5'.
Tanks, shown dry, in this area usually contain water from July to March.
Mahi River is generally fordable from October to June.
The state boundary between Gujarat and Rajasthan States has been surveyed as pointed out by the local officials on the ground, but has not been verified by the Government of Rajasthan.



GOVERNMENT OF INDIA COPYRIGHT, 1969.
Price: Twenty nine Rupees.