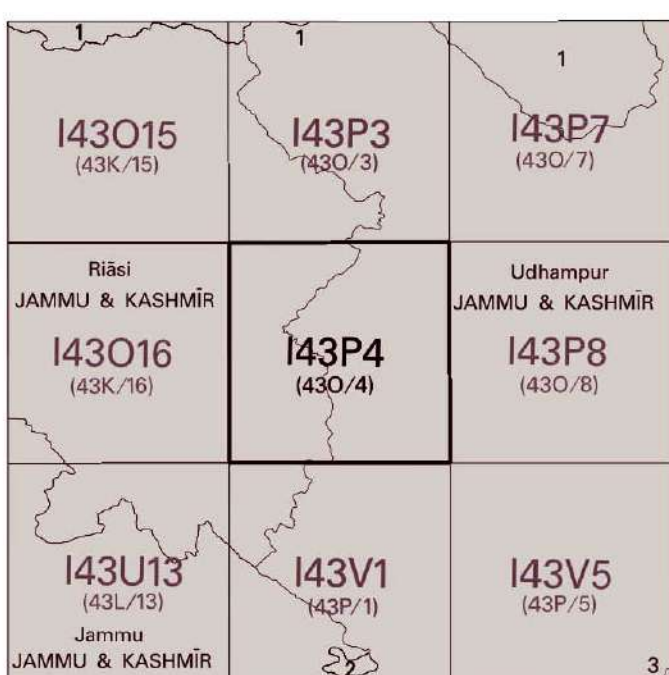


No. I43P4  
Scale 1:50,000



1 Kashmir South (or Anantnag), JAMMU & KASHMIR.  
2 Poonch, JAMMU & KASHMIR.  
3 Kathua, JAMMU & KASHMIR.

1st Edition 2013.

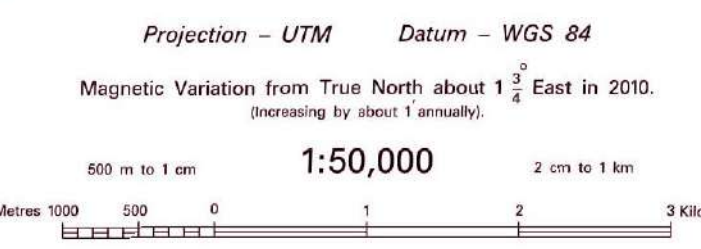
Price : ₹ 94/-



REFERENCE  
NH - 44 National Highway No. 44

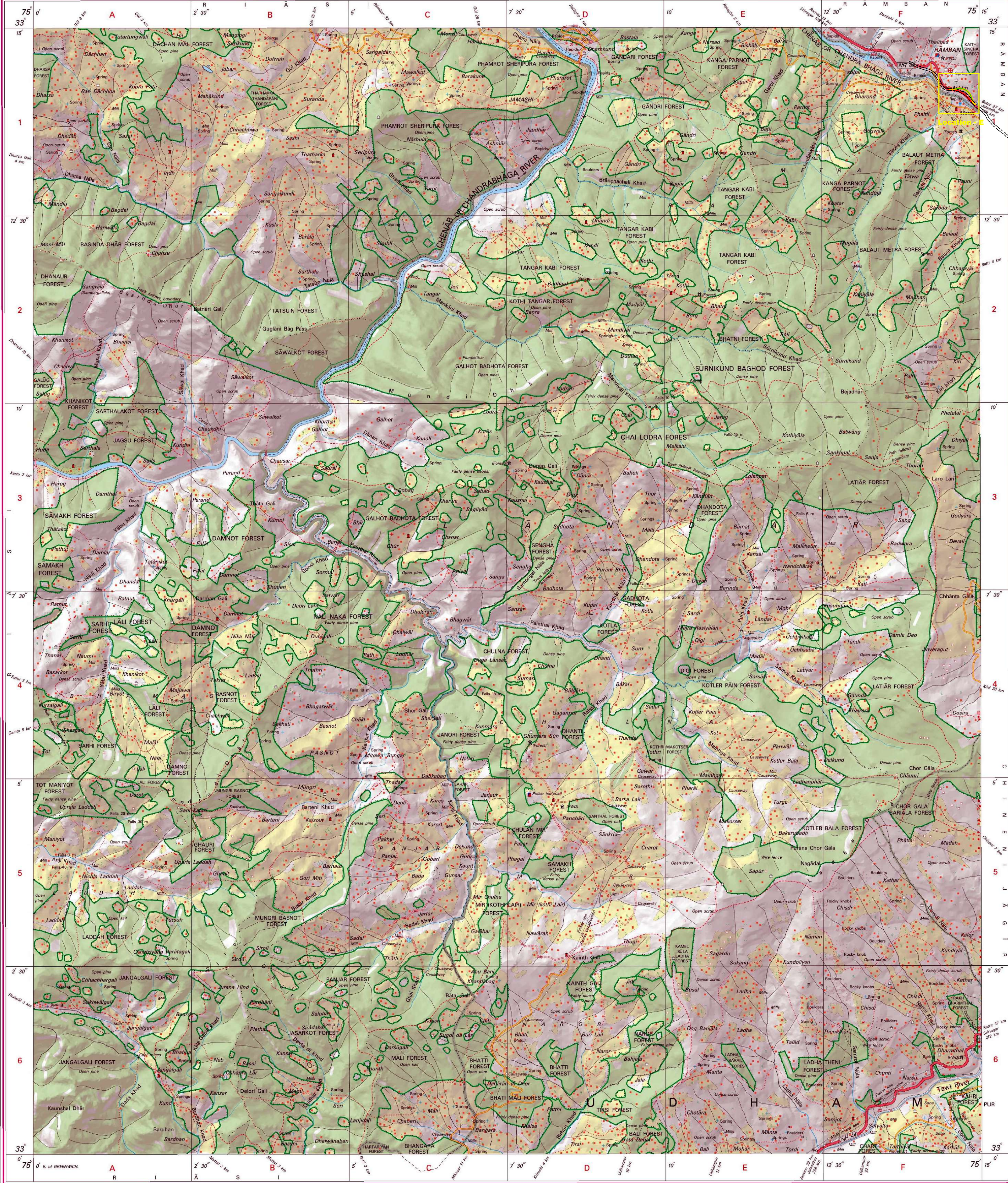
NOTES :-  
Heights and Contours have not been shown.  
A relative height, or, represents the approximate height, in metres, between the top and bottom of a steep slope.  
Forest areas in this sheet are Government Reserves. Their boundaries and names have been incorporated from the forest surveys carried out during 1979-80 and at some places the common forest boundaries have not been shown for want of reliable information.  
Tanks, shown dry, in this area usually contain water from July to February.  
This sheet has been compiled from 1:25,000 survey. The additions and alterations in respect of roads, power lines etc. have been entered as a result of verification survey carried out during 1982.

COMPILATION INDEX  
A Modern survey 1977-78. Updated for identifiable details from satellite imagery of 2008-09.

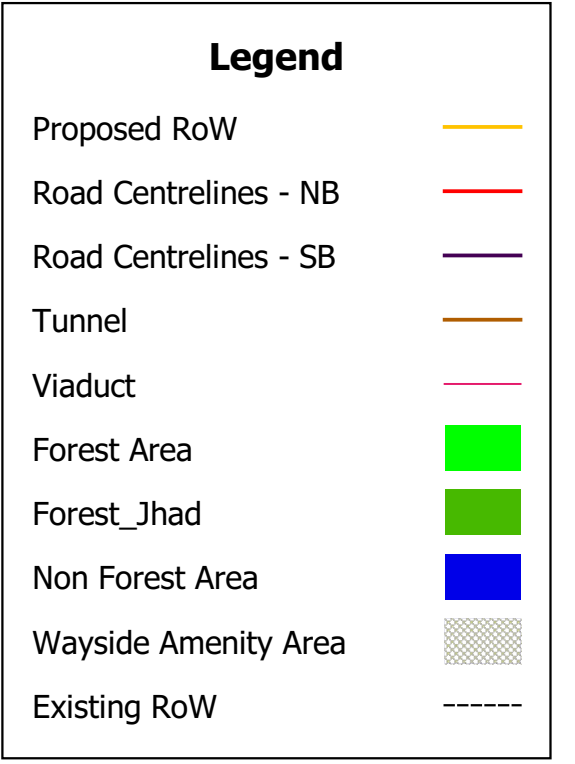
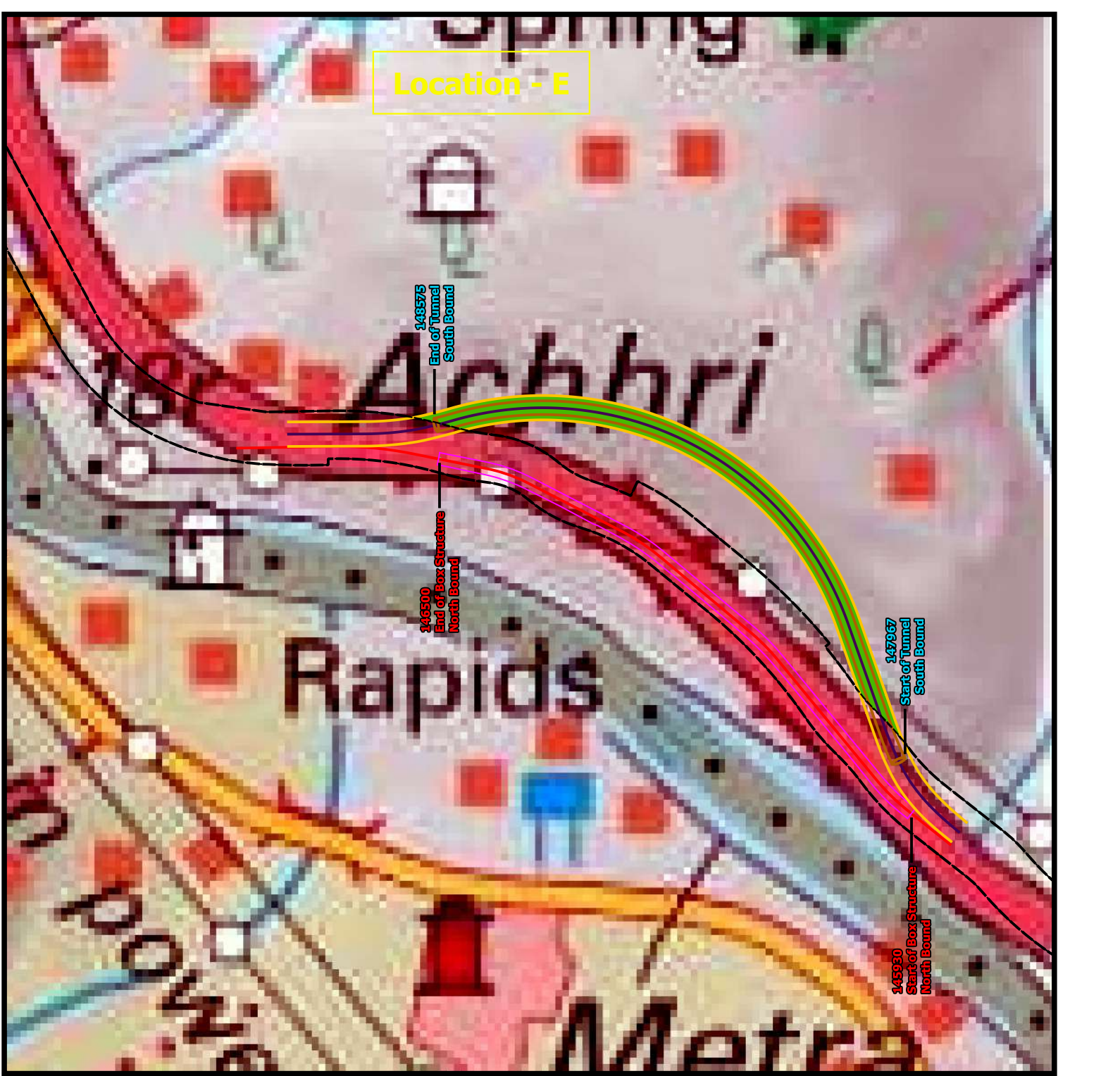


For further details about this map, please contact  
Director  
J & K Geo-Spatial Data Centre  
Survey of India, 65 Channi Himmat  
Near Zorawar Stadium, Jammu, 180015.

WEBSITE - www.surveyofindia.gov.in  
Reproduction in whole or part by any means is prohibited



Map Showing 4 Laning of Udhampur to Ramban Section of NH-44 (Old NH1A) at Critical Locations Between km 130 to km 150 on Survey of India Toposheet in 1:50000 Scale



परियोजना निदेशक  
Project Director  
भारतीय राष्ट्रीय राजमार्ग प्राधिकरण, पश्चिमी जमाई रामबन  
National Highway Authority of India, FIU, Ramban

PROJECT NAME:  
4 Laning of Udhampur to Ramban Section of NH-44 (Old NH1A) at Critical Locations Between km 130 to km 150 in the UT of Jammu and Kashmir

CLIENT  
NATIONAL HIGHWAYS AUTHORITY OF INDIA

CONSULTANT  
Intercontinental Consultants & Technocrats Pvt. Ltd.,  
in Joint Venture with  
ALTINOK Consulting Engineering Inc.