

MAP SHOWING LOCATION OF THE FOREST LAND PROPOSED TO BE DIVERTED FOR THE PUSHPAK NAGAR PROJECT

INDIA
REFER TO THIS MAP AS 1:50,000
SHEET E43H1 FIRST EDITION

RESTRICTED

FIRST EDITION

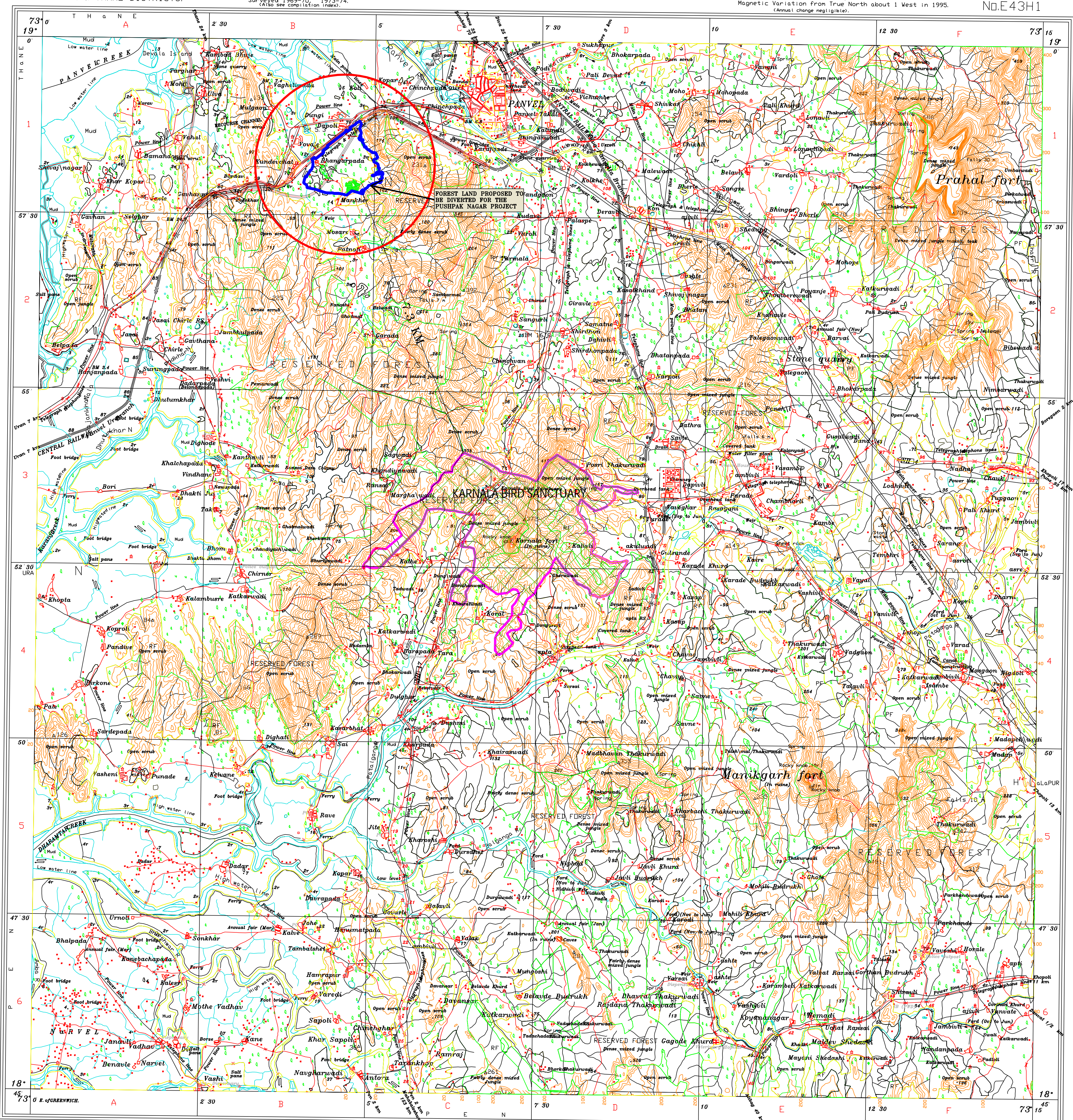
MAHARASHTRA

KULABA & THANE DISTRICTS.

Surveyed 1969-70, 1973-74.
(Also see compilation index).

Magnetic Variation from True North about 1 West in 1995.
(Annual change negligible).

Nd.E43H1



LEGEND

- PUSHPAKNAGAR BOUNDARY
- FOREST LAND PROPOSED TO BE DIVERTED FOR PUSHPAKNAGAR PROJECT

Index to Sheets

E43A16	E43B4	E43B8
E43G13	E43H1	E43H5
E43G14	E43H2	E43H6

Published under the direction of
Major General Kishori Lal Khosla, B.Sc. (Distinction), B.E. (Civil), F.I.S., F.I.E., F.I.G.U., M.A.S.C.E. (U.S.A.),
Survey of India, Hathibarkale Estate, Post Box No. 37, Dehra Dun - 248001 (Uttaranchal),
Department of Science & Technology, Government of India,
2006.

1: 50,000

300 m to 1 cm
Metres 1000 500 0 1 2 3 4 5 6 7 Kilometres

HEIGHTS & CONTOURS IN METRES
CONTOUR INTERVAL 20 METRES

Water features are shown in blue where they generally contain water.
Cultivated areas are coloured yellow.
The exterior boundaries of areas of Reserved or Protected Forests are shown by green ribands.

Contours are approximate.
A relative height, *h_r*, represents the approximate height, in metres, between the top and bottom of a steep slope.
Wooded areas are coloured green. Scattered trees and other vegetation are in green, but prominent surveyed trees are in black.

The triangulated heights and contours in this sheet have not been adjusted to the heights of the spirit-levelled bench-marks and may not be strictly in accordance with them.
The kilometre stone numbers along roads and railways are shown in slant type e.g., whereas milestone numbers are shown in upright type e.g., 5.

All unmetalled roads and cart-tracks in this sheet are generally jeepable in dry season.
Ferries on Patalganga and Bhogeshwar Rivers only take pedestrian traffic.
Tanks, shown dry, in this area usually contain water from July to December.
The administrative boundaries in this sheet have been surveyed as pointed out by the local officials on the ground, but have not been verified by the District authorities.

REFERENCE
NH 4 National Highway No. 4

Administrative Index

KULABA

THANE

PRINTED AT THE
OF SURVEY OF INDIA

GOVERNMENT OF INDIA COPYRIGHT, 2006.
Price: Fifty Rupees.

COMPILATION INDEX

A Compiled from 1:15,000 Bombay Metropolitan survey 1969-70.
B Compiled from 1:25,000 survey 1973-74.

REFER TO THIS MAP AS 1:50,000
SHEET E43H1 FIRST EDITION

INDIA