



निर्यात के लिए नहीं NOT FOR EXPORT

OPEN SERIES  
MAP

No. G45T3

Scale 1:50,000

Gaya BIHAR G45S14 (72D/14)	G45T2 (72H/2)	Nawada BIHAR G45T6 (72H/6)
G45S15 (72D/15)	G45T3 (72H/3)	Kodama JHARKHAND G45T7 (72H/7)
Chatra JHARKHAND G45S16 (72D/16)	G45T4 (72H/4)	Hazratnagar JHARKHAND G45T8 (72H/8)

भारतीय सर्वेक्षण विभाग SURVEY OF INDIA

1st Edition 2010, REVISED PRICE-94/- Price : Rs. 70/-

CONVENTIONAL SYMBOLS

- Express highway: with toll; with bridge; with distance stone  
Roads, metalled: according to importance  
Roads, double carriageway: according to importance  
Unmetalled road, Cart-track, Pack-track with pass, Foot-path  
Streams: with track in bed; undefined, Canal  
Dams: masonry or rock-filled; earthwork, Weir  
River: dry with water channel; with island & rocks, Tidal river  
Submerged rocks, Shoal, Swamp, Reeds  
Wells: lined, unlined, Tube-well, Spring, Tanks; perennial, dry  
Embankments: road or rail; tank, Broken ground, do.  
Railways, broad gauge: double; single with station; under constn.  
Railways, other gauges: double; single with distance stone; do.  
Mineral line or tramway, Kin, Cutting with tunnel  
Contours with sub-features, Rocky slopes, Cliffs  
Sand features: (1) flat, (2) sand-hills (permanent), (3) dunes (shifting)  
Towns or Villages: inhabited, deserted, Fort  
Huts: permanent; temporary, Tower, Antiquities  
Temple, Chhatra, Church, Mosque, Idgah, Tomb, Graves  
Lighthouse, Lightship, Buoys: lighted, unlighted, Anchorage  
Mine, Vine on trellis, Grass, Scrub  
Palms: palmyra; other, Plantain, Conifer, Bamboo, Other trees  
Areas: cultivated; wooded, Surveyed tree  
Boundary, international  
state: demarcated; undemarcated  
district: subdivision; taluk or taluk, forest  
Boundary pillars: surveyed; unlocated  
Heights, triangulated: station; point; approximate  
Bench-mark: geodetic; tertiary; canal  
Post office, Telegraph office, Overhead tank  
Rest house or inspection bungalow, Circuit house, Police station  
Camping ground, Forest: reserved; protected  
Spaced names: administrative, locality or tribal  
Hospital, Dispensary, Veterinary; Hospital/Dispensary  
Aerodrome, Helipad, Tourist site  
Power line: with pylons surveyed; with poles unsurveyed

Area of forest land to be diverted  
= 5.4432 ha.

Area of Right of Way in Non-forest land  
= 0.854 ha.

REFERENCE

NH 2 National Highway No. 2

NOTES

Contours are approximate.  
Heights are in metres and above Indian mean sea level.  
A relative height,  $\Delta$ , represents the approximate height, in metres between the top and bottom of a steep slope.  
The triangulated heights and contours in this sheet have not been adjusted to the height of the spirit-levelled bench-marks and may not be strictly in accordance with them.  
The kilometre stone numbers along roads are shown in start type, e.g., '5' whereas milestone numbers are shown in upright type, e.g., '15'.  
Cart-tracks along canals are jeppable in dry season. Permission to use these is required from the irrigation authorities.  
Numerous unlined wells exist throughout the cultivated portions of this sheet; only the important ones have been shown.  
Cultivation is periodic and dependent on rainfall.

COMPILATION INDEX

A. Surveyed during 1977-78. Updated for major details during 2005-06.

A

Projection - UTM Datum - WGS 84

Magnetic Variation from True North about 1° West in 2005.  
(Decreasing by about 1" annually).

1:50,000

500 m to 1 cm  
2 cm to 1 km  
Metres 1000 500 0 1 2 3 Kilometres

CONTOUR INTERVAL 20 METRES

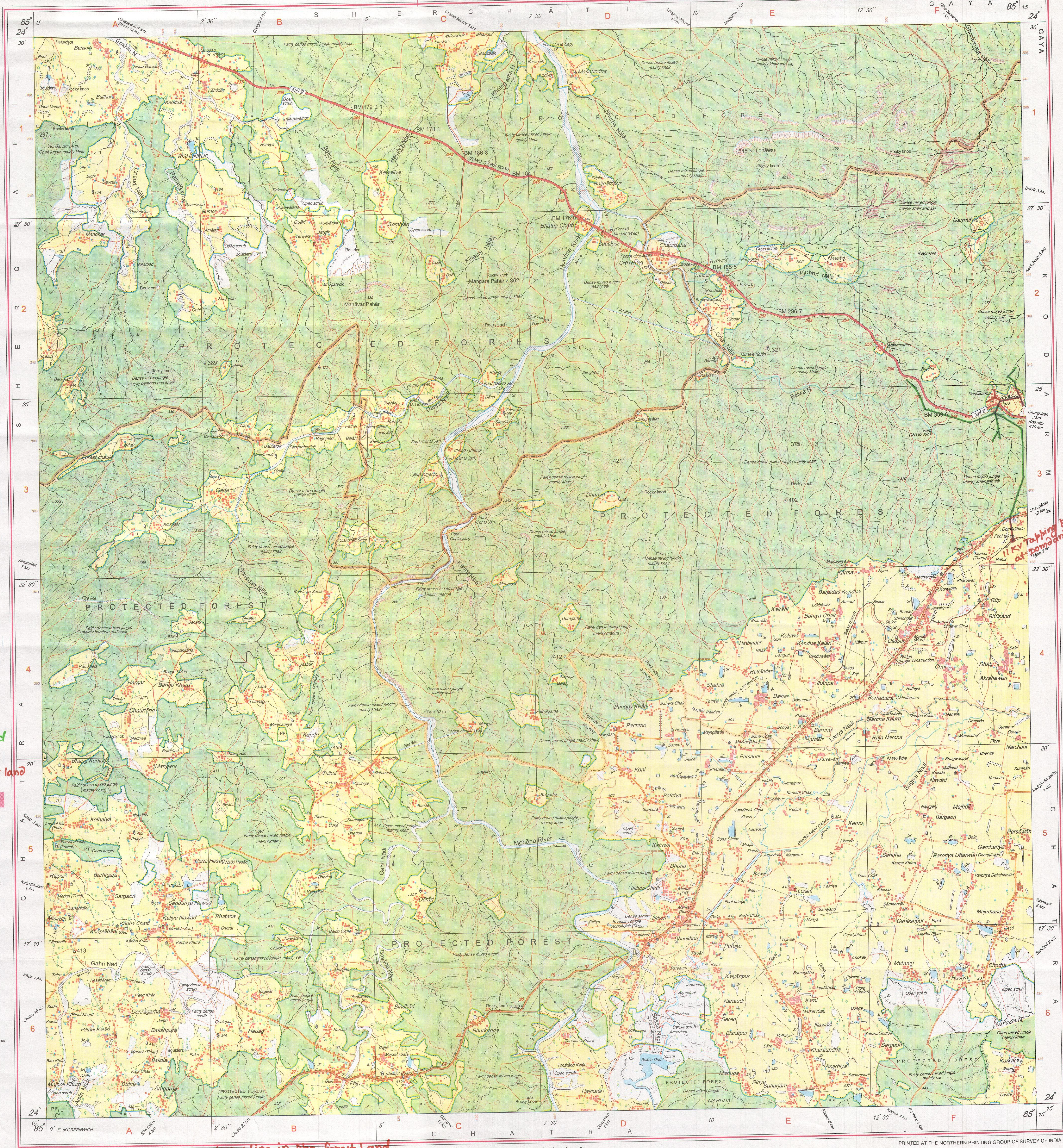
For further details about this map, please contact

Director  
Bihar Geo-Spatial Data Centre  
Survey of India, 164, Sheikhpura House, Sheikhpura  
Patna - 800014.  
Fax : 0612 - 2280265

WEBSITE - www.surveyofindia.gov.in

Reproduction in whole or part by any means is prohibited  
without the written permission of Survey of India, the  
National Mapping Agency.

GOVERNMENT OF INDIA COPYRIGHT, 2010.



REG. No. 4295-NPG D'10(BiharGDC:1:50,000)-1013T11.

11 KV/415V line in Non-forest Land.  
11 KV/415V Line in Forest land (P.F.)

भारत के सर्वेक्षण के निदेशन में प्रकाशित,  
Published under the direction of Surveyor General of India,  
Survey of India, Hattibarkala Estate, Post Box No.37, Dehra Dun-248001 (Uttarakhand)  
Department of Science & Technology, Government of India.

PRINTED AT THE NORTHERN PRINTING GROUP OF SURVEY OF INDIA.