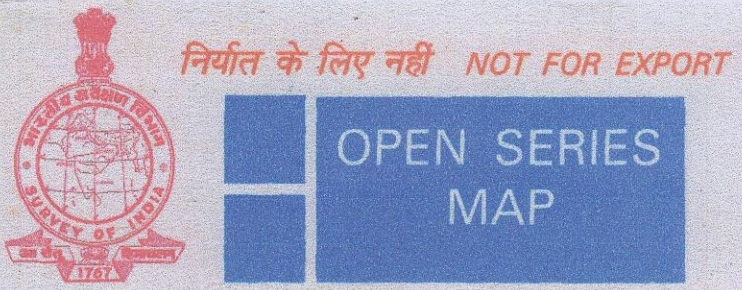
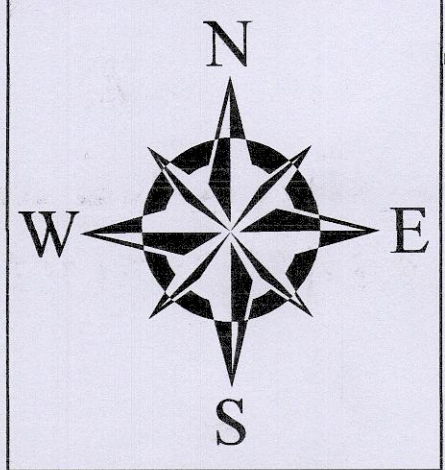


**TOPO MAP SHOWING THE LOCATION OF NON-FOREST LAND INDETIFIED FOR COPENSATORY AFFORESTATION OVER 1.81 HA.
IN VILLAGE FULJHAR UNDER LAHUNIPADA TAHASIL AGAINST PATABEDA IRON ORE MINES OVER 28.397 HA.
IN VILLAGE PATABEDA UNDER KOIRA TAHASIL OF SUNDARGARH DISTRICT IN FAVOUR OF MGM MINERALS LTD.**

REF:- TOPOSHEET NO. - F45N2 (73G/2)

SCALE - 1 : 50,000



No. F45N2

Scale 1:50,000

F45M13 (73C13) Sundargarh ORISSA	F45N1 (73G1) Sundargarh ORISSA	F45N5 (73G5) Sundargarh ORISSA
F45M14 (73C14) Deogarh ORISSA	F45N2 (73G2) Sundargarh ORISSA	F45N6 (73G6) Sundargarh ORISSA
F45M15 (73C15) Sundargarh ORISSA	F45N3 (73G3) Sundargarh ORISSA	F45N7 (73G7) Sundargarh ORISSA

1 Sambalpur, ORISSA.

भारतीय सर्वेक्षण विभाग SURVEY OF INDIA

1st Edition 2009.

PRICE ₹94/-

CONVENTIONAL SYMBOLS

Express highway: with toll; with bridge; with distance stone	
Roads, metalled: according to importance	
Roads, double carriageway: according to importance	
Unmetalled road, Cart-track, Pack-track and pass, Foot-path	
Streams: with track in bed; undefined, Canal	
Dams: masonry or rock-filled; earthenwork, Weir	
River: dry with water channel; with island & rocks, Tidal river	
Submerged rocks, Shoal, Swamp, Reeds	
Wells: lined; unlined, Tube-well, Spring, Tank; perennial; dry	
Embankments: road or rail; track, broken ground	
Railways, broad gauge: double; single with station; under construction	
Railways, other gauges: double; single with distance stone, 60	
Mineral line or tramway, Kite, Cutting with tunnel	
Contours with sub-features, Rocky slopes, Cliffs	
Sand features: dunes, dunes with vegetation, Sandstone hills	
Towns or Villages: inhabited; deserted, Fort, (Stone/Building)	
Huts: permanent; temporary, Tower, Antiquities	
Temples, Chhatra, Church, Mosque, Jagula, Tomb, Graves	
Lighthouse, Lightship, Buoy: lighted; unlighted, Anchorage	
Mine: View on traffic, Grass, Scrub	
Palms: palmyra; other, Plantain, Conifer, Bamboo, Other trees	
Areas: cultivated; wooded, Surveyed tree	
Boundary, international	
State: demarcated; undemarcated	
District: subdivision, taluk or taluk: forest	
Boundary pillars: surveyed; uncollected	
Heights: triangulated; station; point; approximate	
Bench-mark: geodetic; tertiary; canal	
Post office, Telegraph office, Overhead tank	
Rest house or inspection bungalow, Circuit house, Police station	
Camping ground, Forest: reserved; protected	
Spaced names: administrative, locality or tribal	
Hospital, Dispensary, Veterinary: Hospital / Dispensary	
Aerodrome, Helipad, Tourist site	
Power line: with pylons surveyed; with poles unsurveyed	

REFERENCE

NH 6 National Highway No. 6.

NOTES

Heights are in metres and above Indian mean sea level.
Contours are approximate.
A relative height, or, represents the approximate height, in metres between top and bottom of a steep slope.
The triangulated heights and contours in this sheet have not been adjusted to the heights of the north-warded bench-marks and may not be strictly in accordance with them.
The exterior boundaries of areas of Reserved or Protected Forests are shown by green borders.
Hand Pump is shown thus.

COMPILED INDEX

A. Compiled from 1:25,000 survey 1979-79. Updated for major details during 2005-06.

A	
---	--

Projection - UTM Datum - WGS 84

Magnetic Variation from True North about 1° West in 2005.

(Annual change negligible).

1:50,000

500 m to 1 cm 2 cm to 1 km

CONTOUR INTERVAL 20 METRES

For further details about this map, please contact

Director

Orissa Geo-Spatial Data Centre

Survey of India

Survey Bhawan, PO - R R Laboratory

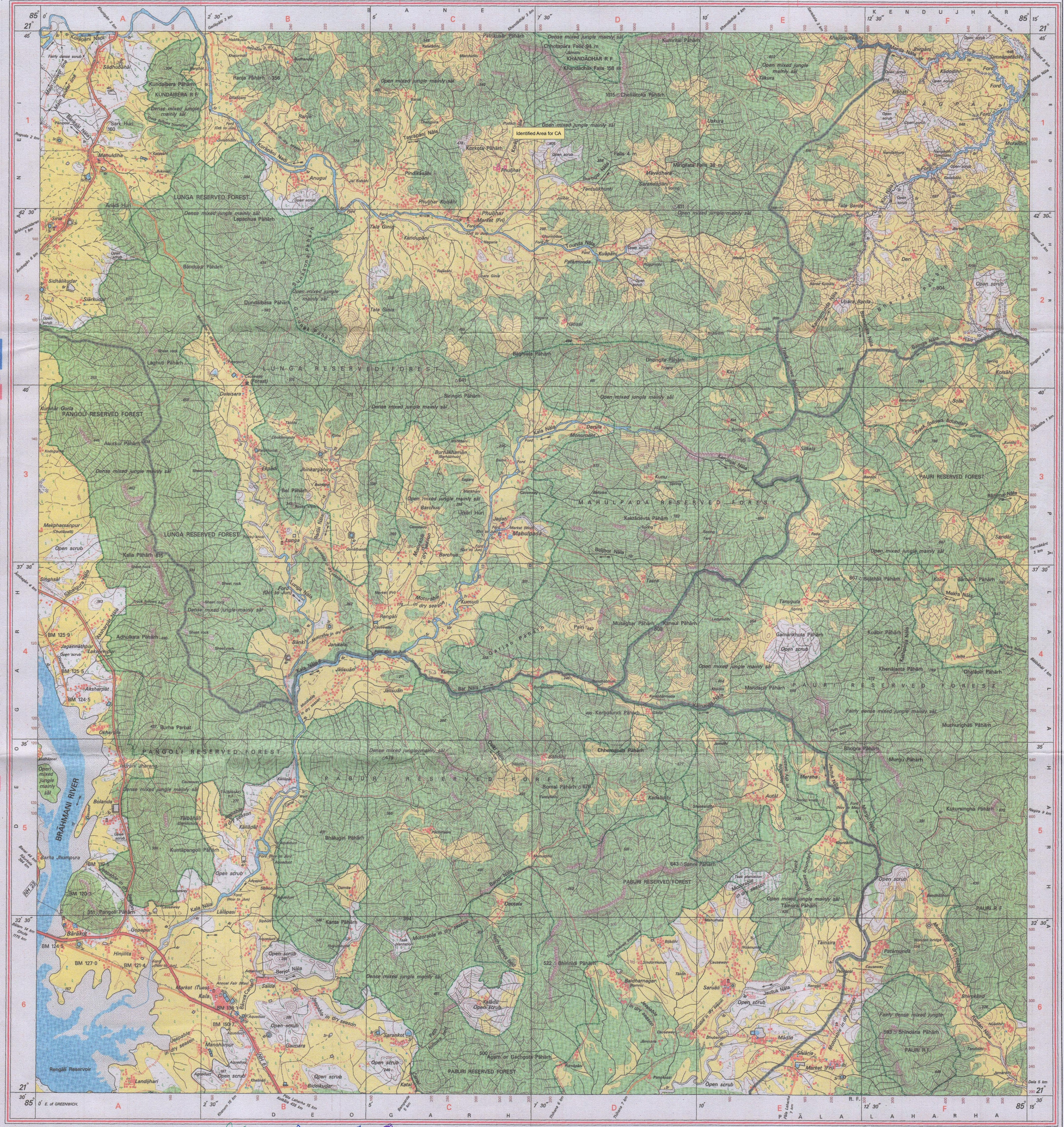
Bhubaneswar - 751013

Fax : 0674 - 2301418

WEBSITE - www.surveyofindia.gov.in

Reproduction in whole or part by any means is prohibited without the written permission of Survey of India, the National Mapping Agency.

© GOVERNMENT OF INDIA COPYRIGHT, 2009.



REG. No. 8254-SFG D 09 (Orissa GDC-150,000)-1015.

Revenue mapsheet
Fuljhar

Tehsildar
Lahunipara

ACF
I/C Khatuon Range

भारत के नक्शे तैयार करने के लिए सर्वेक्षण विभाग,
Published under the direction of Surveyor General of India,
Survey of India, Hathi Barkala Estate, Post Box No. 37, Dehra Dun-248001 (Uttarakhand),
Department of Science & Technology, Government of India.

PRINTED AT THE SOUTHERN PRINTING GROUP OF SURVEY OF INDIA.