

No. H43D7
 Scale 1:50,000

Amritsar PUNJAB H43D2 (44M/2)	Gurdaspur PUNJAB H43D6 (44M/6)	Hoshiarpur PUNJAB H43D10 (44M/10)
Tarn Taran PUNJAB H43D3 (44M/3)	H43D7 (44M/7) Kaporthala PUNJAB	H43D11 (44M/11) Jalandhar PUNJAB
H43D4 (44M/4) Ferozpur PUNJAB	H43D8 (44M/8) Moga PUNJAB	H43D12 (44M/12)

भारतीय सर्वेक्षण विभाग SURVEY OF INDIA
 1st Edition 2009. Price Rs. 178

CONVENTIONAL SYMBOLS

Express Highway: with toll; with bridge; with distance stone	
Roads, metalled: according to importance	
Roads, double carriageway: according to importance	
Unmetalled road. Cart-track. Pack-track with pass. Foot-path.	
Streams: with track in bed; underflow. Canal.	
Dams: masonry or rock-filled; earthwork. Weir.	
River: dry with water channel; with island & rocks. Tidal river.	
Submerged rocks. Shoal. Swamp. Reeds.	
Wells: lined; unlined. Tub-well. Spring. Tanks: perennial; dry.	
Embankments: road or rail; limit. Broken ground.	
Railways, broad gauge: double; single with station under canopy.	
Railways, other gauge: double; single with distance stone; etc.	
Mineral line or tramway. K.M. Cutting with tunnel.	
Contours with sub-features. Rocky slopes. Cliffs.	
Sand features: (Hill) (Basin) (Rift) (Intrusion) (Sinkhole) (Mudflat).	
Towns or Villages: inhabited; deserted. Fort.	
Huts: permanent; temporary. Tower. Antiquities.	
Temples. Chandi. Mosque. Mazar. Ghat. Tomb. Graves.	
Lighthouses. Lightship. Buoy. Light; unlighted. Anchorage.	
Mine. Vise on wall. Grass. Sand.	
Forest: palmyra; other. Plantain. Cactus. Bamboo. Other trees.	
Areas: cultivated; wooded. Surveyed trap.	
Boundary, international.	
State: demarcated; undemarcated.	
district: sub-division; taluk or Taluk; forest.	
Boundary pillars: surveyed; un-surveyed; village junction.	
Heights, triangulation: station; point; approximate. 200. 200.	
Street-mark: post-office; military; canal. BM 63. 63.	
Post office. Telegraph office. Overhead tank.	
Rail house or inspection bungalow. Circuit house. Police station.	
Camping ground. Forest reserved; protected.	
Spiced names: administrative; locality or tribal. KIKRI. NUGA.	
Hospital. Dispensary. Veterinary. Hospital/Dispensary.	
Aerodrome. Helipad. Tourist site.	
Power line: with pylons surveyed; with poles un-surveyed.	

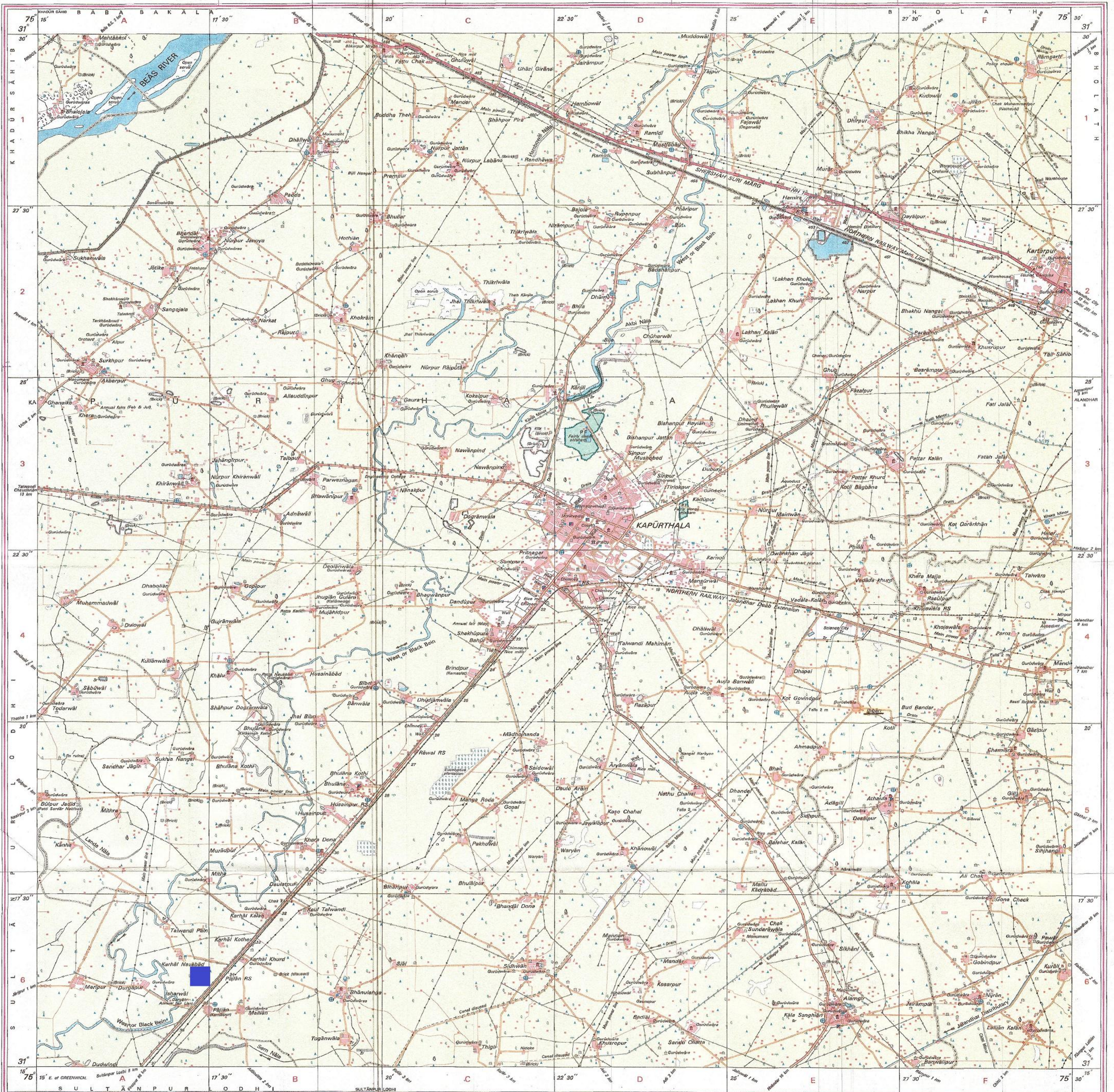
REFERENCES
 NH 1 National Highway No. 1
 MRGS NORTHERN RAILWAY Beas Ghidwari Section.

NOTES
 Canal distance stones are 1200 feet apart and every existing still stone is shown.
 A relative height, e.g., 27, marked along a canal indicates the height of the canal embankment above the adjacent country.
 Permission to use canals and unmetalled roads along canals is required from the irrigation authorities.
 Tanks, shown dry, in this area usually contain water from July to December.
 Tub-wells are numerous throughout the sheet, only the important ones have been shown.
 A relative height, 27, represents the approximate height, in metres, between the top and bottom of a steep slope.
 The course of the Beas River is liable to continual change owing to shifting of the river bed.
 The administrative boundaries and names in this sheet have been brought up-to-date to 2007.

COMPILED INDEX
 A. Compiled from 1:25,000 survey, 1994-98. Updated for major details during 2004-05.

Projection - UTM Datum - WGS 84
 Magnetic Variation from True North about 1/2° East in 2006.
 (Increasing by about 1/2" annually).
 1:50,000
 500 m to 1 cm
 2 cm to 1 km
 1:50,000
 For further details about this map, please contact
 Director
 Punjab, Haryana & Chandigarh Geo-Spatial Data Centre
 Survey of India, Sector 32 A
 Chandigarh,
 Fax : 0172 - 2604671

WEBSITE - www.surveyofindia.gov.in
 Reproduction in whole or part by any means is prohibited
 without the written permission of Survey of India, the
 National Mapping Agency.
 GOVERNMENT OF INDIA COPYRIGHT, 2009.



REG. No. 373/03/09 P. H & C. G.O. 160.001015.
 Diversion of 0.397 ha. forest land for construction of approach road to THE GRAND HERITAGE MARRIAGE PALACE on Kapurthala to Sultanpur Road km 33.666 (RHS.) on NH-703-A. R/Side at village Isharwal, Khaura No. 1162(8-0), 1023(8-0), 1024(8-0), 1025(8-0), 1163(8-0) (H.B. No. 116) (Area 4.909 acre) Tehsil & Distt Kapurthala under forest division Jalandhar

भारत के सर्वेक्षण के निदेशन में प्रकाशित,
 Published under the direction of Surveyor General of India,
 Survey of India, Haidibarkala Estate, Post Box No. 37, Dehra Dun - 248001 (Uttarakhand),
 Department of Science & Technology, Government of India.
 PRINTED AT THE WESTERN PRINTING GROUP OF SURVEY OF INDIA.