



निर्णय के लिए नहीं NOT FOR EXPORT

OPEN SERIES
MAP

No. G42X11

Scale 1:50,000

G42X6 (40P/6)	G42X10 (40P/10)	G42X14 (40P/14)
G42X7 (40P/7)	G42X11 (40P/11) Banās Kāntha GUJARAT	G42X15 (40P/15)
G42X8 (40P/8)	G42X12 (40P/12)	G42X16 (40P/16)

1 Kachchh GUJARAT.
2 Patan GUJARAT.

भारतीय सर्वेक्षण विभाग

SURVEY OF INDIA

1st Edition 2011.

Price: Rs. 118/-

CONVENTIONAL SYMBOLS

Express highway, with toll, with bridge, with distance stone	
Roads, metalled, according to importance	
Roads, double cartway, according to importance	
Unmetalled road, Cart-track, Pack-track with pass, Foot-path	
Streams, with track in bed, undrained, Canal	
Dams, masonry or rock-filled, earthwork, Well	
River, dry with water channel, with island & rocks, Tidal river	
Submerged rocks, Shoal, Swamp, Reeds	
Wells, lined, unlined, Tube-well, Spring, Tanks, perennial, dry	
Embankments: road or rail, tank, Broken ground	
Railways, broad gauge, double, single with station, under constn.	
Railways, other gauges: double, single with distance stone, do.	
Mineral line or tramway, K.M. Cutting with tunnel	
Contours with sub-features, Rocky slopes, Cliffs	
Sand features: (1) flat, (2) sand-hills(permanent), (3) dunes(shifting)	
Towns or Villages: inhabited, deserted, Fort	
Huts: permanent, temporary, Tower, Antiquities	
Temple, Chhat, Church, Mosque, Idgah, Tomb, Graves	
Lighthouse, Lightship, Buoys: lighted, unlighted, Anchorage	
Mine, Vine on trellis, Grass, Scrub	
Palms: palmyra, other, Plantain, Conifer, Bamboo, Other trees	
Areas: cultivated, wooded, Surveyed tree	
Boundary, international	
state, demarcated, undemarcated	
district, subdivision, tahsil or taluk, forest	
Boundary pillars: surveyed, unlocated	
Heights, triangulated, station, point, approximate	
Bench-mark: geodetic, tertiary, canal	
Post office, Overhead tank	
Rest house or inspection bungalow, Circuit house, Police station	
Camping ground, Forest: reserved, protected	
Spaced names: administrative, locality or tribal	
Hospital, Dispensary, Veterinary, Hospital / Dispensary	
Aerodrome, Helipad, Tourist site	
Power line, with pylons surveyed, with poles unsurveyed	

REFERENCE

NH 15 National Highway No. 15.

NOTES :-

Heights and contours have not been shown.
A relative height, e.g., 50, represents the approximate height in metres between the top and the bottom of a steep slope.
Cultivation is periodic and dependent on rainfall.
Tanks, in this area usually contain water from July to September.
Cart-tracks in this sheet, against which there is no descriptive remark, are generally motorable (four-wheel drive).
Cactus hedges generally exist along field bounds and cart-tracks.

COMPILATION INDEX

A. Surveyed during 1992-93. Updated for major details during 2006-07.

Projection - UTM Datum - WGS 84

Magnetic Variation from True North in 2005.

1:50,000

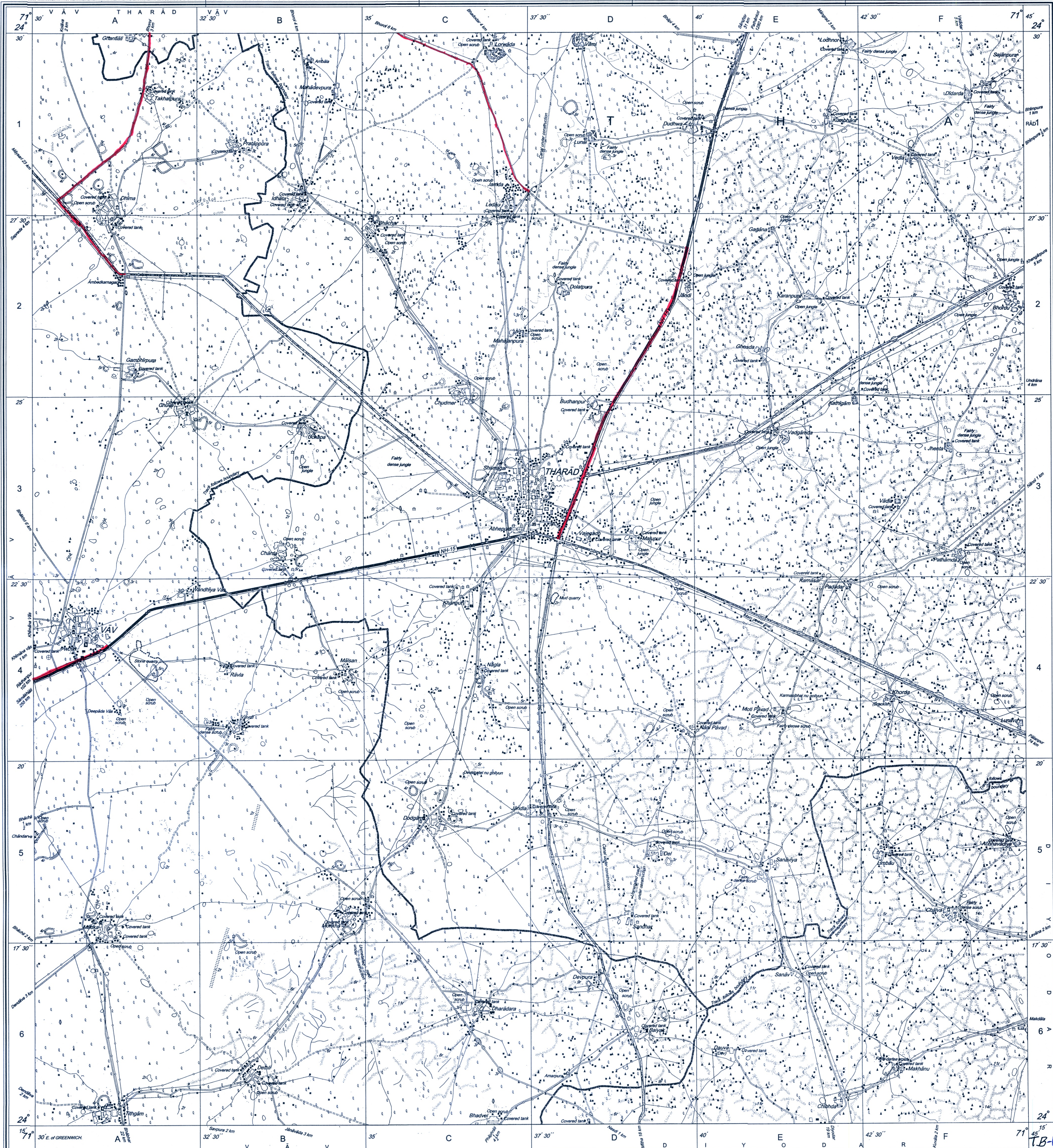
500 m to 1 cm 2 cm to 1 km

For further details about this map, please contact
Director
Gujarat, Daman & Diu Geo-Spatial Data Centre
Survey of India, Sector 10(A)
Gandhinagar.

WEBSITE - www.surveyofindia.gov.in

Reproduction in whole or part by any means is prohibited
without the written permission of Survey of India, the
National Mapping Agency.

GOVERNMENT OF INDIA COPYRIGHT, 2011.



REG. No. 918-SPG D/12(GD & D GDC-150,000)-1508/15.

भारत के सर्वेक्षण विभाग द्वारा तैयार किया गया, एनएसटी (फिजिक्स), पी.जी. डिप्लोमा (कार्टो) (आईटीसी नैतिकता) के निदेशन में प्रकाशित।
Published under the direction of Rajendra Mani Tripathi, M.Sc. (Physics), P.G. Diploma (Carto) (ITC, The Netherlands) Surveyor General of India,
Survey of India, Hathi Barkala Estate, Post Box No. 37, Dehra Dun - 248001 (Uttarakhand),
Department of Science & Technology, Government of India.

PRINTED AT THE SOUTHERN PRINTING GROUP OF SURVEY OF INDIA.

Proposed OFC route





निर्यात के लिए नहीं NOT FOR EXPORT

OPEN SERIES
MAP

No. G42X10

Scale 1:50,000

G42X5 (40P/5)	G42X9 (40P/9) Jālor RĀJĀSTHĀN	G42X13 (40P/13)
G42X6 (40P/6)	G42X10 (40P/10)	G42X14 (40P/14)
G42X7 (40P/7)	G42X11 (40P/11) Bānās Kānha GUJARĀT	G42X15 (40P/15)

1. Kachchh, GUJARĀT
2. Bārmer, RĀJĀSTHĀN

भारतीय सर्वेक्षण विभाग

SURVEY OF INDIA

1st Edition 2011.

Price: Rs. 118/-

CONVENTIONAL SYMBOLS

Express highway with toll; with bridge; with distance stone	20
Roads, metalled: according to importance	
Unmetalled road. Cart-track. Pack-track with pass. Foot-path	
Streams: with track in bed; undefined. Canal	
Dams: masonry or rock-filled; earthenwork. Weir	
River: dry with water channel; with island & rocks. Tidal river	
Submerged rocks. Shoal. Swamp. Reeds	
Wells: lined; unlined. Tube-well. Spring. Tanks: perennial; dry	
Embankments: road or rail; tank. Broken ground	
Railways, broad gauge: double; single with station; under constn.	
Railways, other gauges: double; single with distance stone; do.	
Mineral line or tramway. Kin. Cutting with tunnel	
Contours with sub-features. Rocky slopes. Cliffs	
Sand features: (1) flat. (2) sand-hills(permanent). (3) dunes(shifting)	
Towns or Villages: inhabited; deserted. Fort	
Huts: permanent; temporary. Tower. Antiquities	
Temple. Chhattr. Church. Mosque. Idgah. Tomb. Graves	
Lighthouse. Lightship. Buoys: lighted; unlighted. Anchorage	
Mine. Vine on trellis. Grass. Scrub	
Palms: palmyra; other. Plantain. Conifer. Bamboo. Other trees	
Areas: cultivated; wooded. Surveyed tree	
Boundary, international	
state; demarcated; undemarcated	
district; subdivision; tahsil or taluk; forest	
Boundary pillars: surveyed; unlocated	
Heights, triangulated; station; point; approximate	200 .200 .200
Bench-mark: geodetic; tertiary; canal	BM 63-3 .BM 63-3 .63
Post office. Overhead tank	
Rest house or inspection bungalow. Circuit house. Police station	
Camping ground. Forest: reserved; protected	
Spoken names: administrative; locality or tribal	KIKRI NĀGA
Hospital. Dispensary. Veterinary. Hospital / Dispensary	
Aerodrome. Helipad. Tourist site	
Power line: with pylons surveyed; with poles unsurveyed	

REFERENCE

NH 15 National Highway No. 15

NOTES

Heights and contours have not been shown.
Cactus hedges generally exist along field bunds and cart tracks.
Cultivation is periodic and dependent on rainfall.
Tanks, shown dry, in this area usually contain water from July to November.
A relative height, e.g., & against a well, in blue, indicates its total depth in metres.

COMPILATION INDEX

A. Surveyed during 1992-93. Updated for major details during 2006-07.

Projection - UTM Datum - WGS 84

Magnetic Variation from True North about 0° in 2005.
(Increasing by about 1° East annually)

500 m to 1 cm
1:50,000
2 cm to 1 km
Metres 1000 500 0 1 2 3 Kilometres

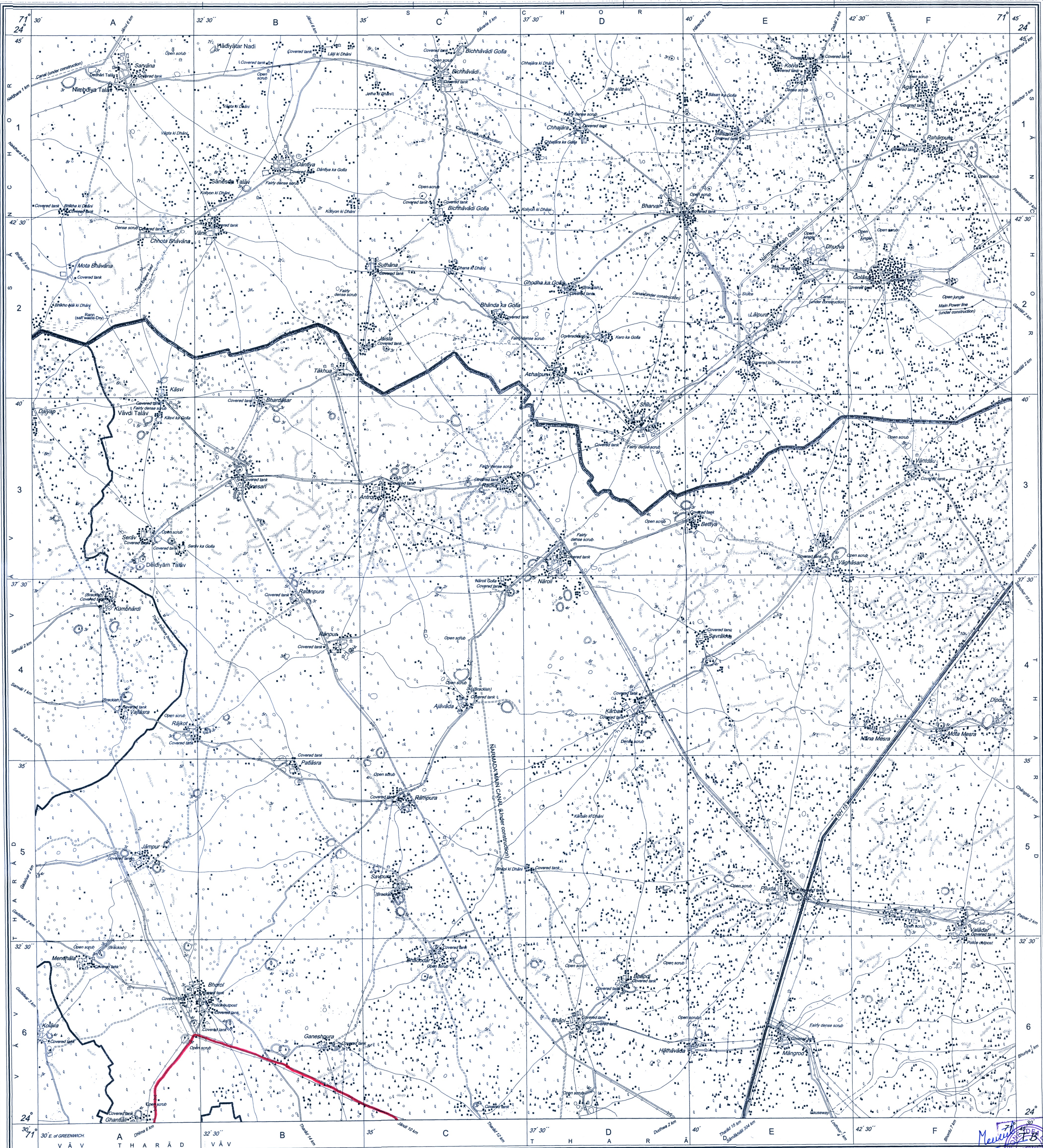
For further details about this map, please contact

Director
Gujarat, Daman & Diu Geo-Spatial Data Centre
Survey of India, Sector 10(a)
Gandhinagar

WEBSITE - www.surveyofindia.gov.in

Reproduction in whole or part by any means is prohibited
without the written permission of Survey of India, the
National Mapping Agency.

GOVERNMENT OF INDIA COPYRIGHT, 2011.



REG. No. 911-SPG-D/12(GD & D GDC-1:50,000)1508-15.

भारत के सर्वेक्षण विभाग द्वारा तैयार किया गया, एनएसआई (फिजिक्स), पीएचडी (कार्टोग्राफी) के निदेशन में प्रकाशित,
Published under the direction of Rajendra Mani Tripathi, M.Sc. (Physics), P.G. Diploma (Carto) (ITC, The Netherlands) Surveyor General of India,
Survey of India, Hathiabarkala Estate, Post Box No. 37, Dehra Dun - 248001 (Uttarakhand),
Department of Science & Technology, Government of India.

Proposed route

PRINTED AT THE SOUTHERN PRINTING GROUP OF SURVEY OF INDIA