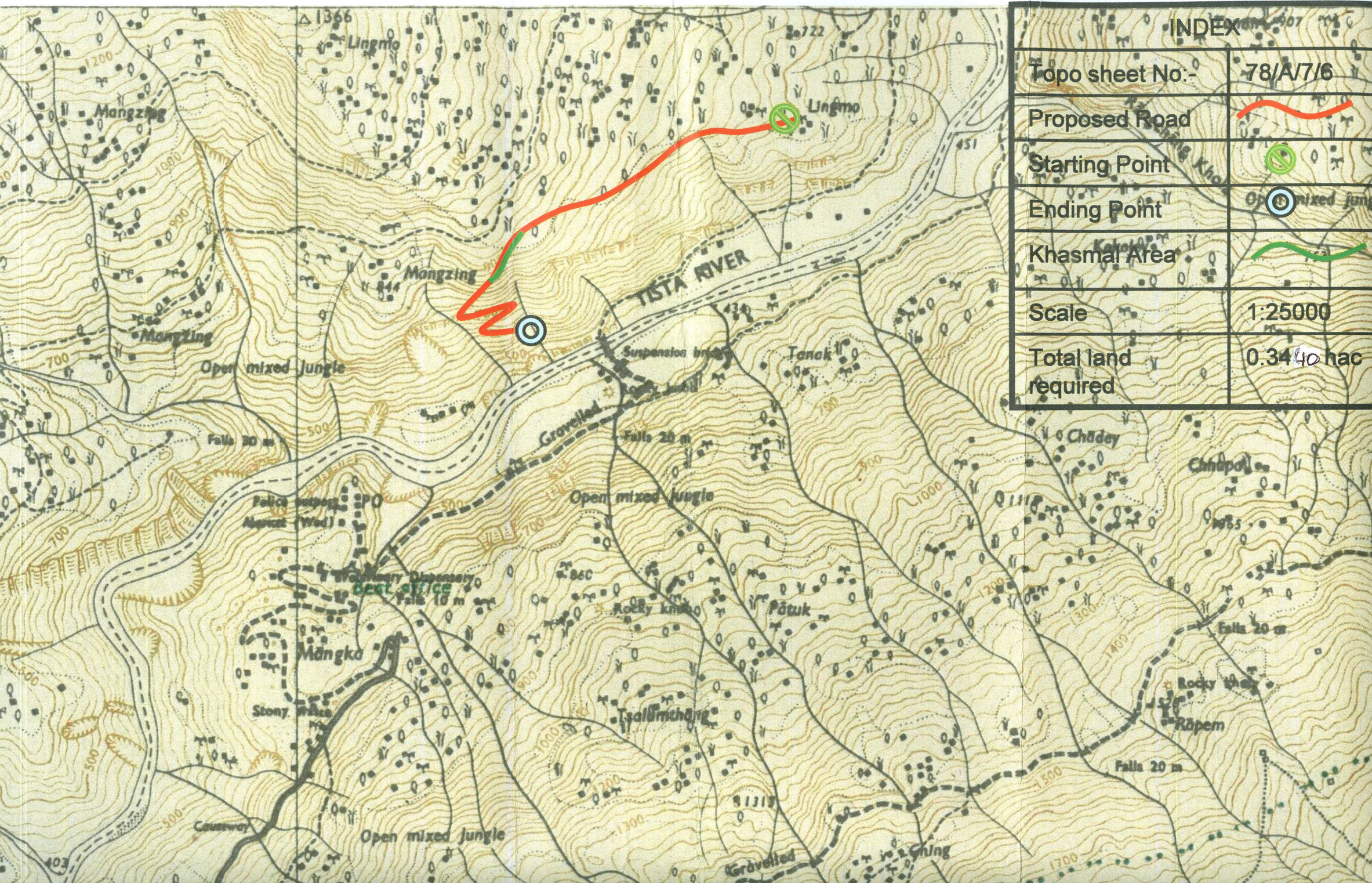


SECTION OF 3KM ROAD FROM KOLTHANG MANAY DARA TO JOGI DARA IN SOUTH SIKKIM.



INDEX	
Topo sheet No:-	78/A/7/6
Proposed Road	
Starting Point	
Ending Point	
Khamsal Area	
Scale	1:25000
Total land required	0.3440 hac