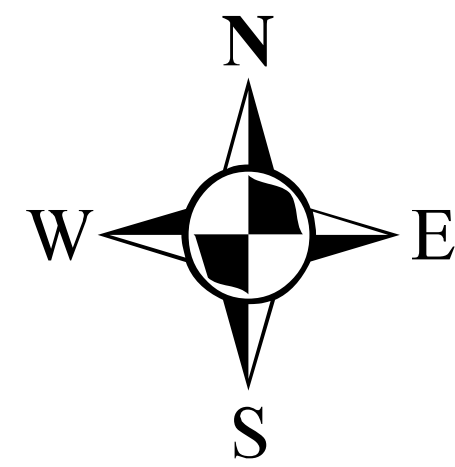
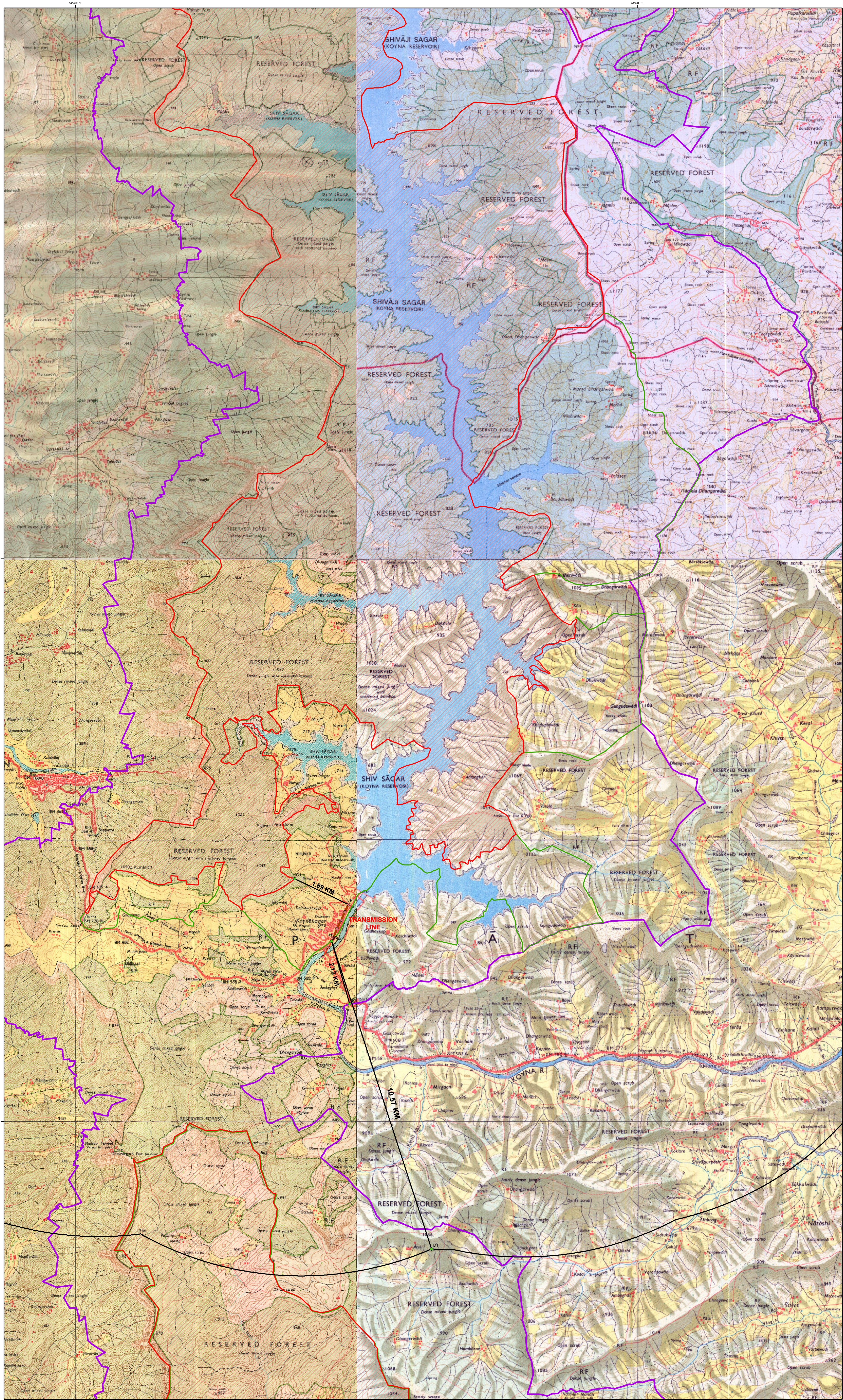


TOPOGRAPHIC MAP SHOWING DISTANCE BETWEEN  
220 KV KARAD KOYNA ( KDPH ) TRANSMISSION LINE  
AND PROPOSED STR ESZ BOUNDARY,  
KOYNA SANCTUARY 10 KM PERIPHERY AND KOYNA SANCTUARY ( STR PA ) BOUNDARY  
SUPERIMPOSED ON SOI TOPOSHEETS OF 1:50000 SCALE



1:50,000



0 1.25 2.5 5 7.5 10 12.5 Kilometers

- Legend**
- TRANSMISSION LINE COORDINATES
  - DISTANCE POINT
  - TRANSMISSION LINE INSIDE SANCTUARY
  - TRANSMISSION LINE
  - KOYNA SANCTUARY 10 KM PERIPHERY
  - DISTANCE LINE
  - STR CORE BOUNDARY
  - STR PA BOUNDARY
  - PROPOSED STR ESZ BOUNDARY

PRINTED AT THE 104 (HBD) PRINTING GROUP OF SURVEY OF INDIA

|   |  |
|---|--|
| Towns or Villages: inhabited, deserted, Fort                    |  |
| Huts: permanent, temporary, Tower, Antiquities                  |  |
| Temple, Chhatra, Church, Mosque, Idgah, Tomb, Graves            |  |
| Lighthouse, Lightship, Buoy, Lighted, unlighted, Anchorage      |  |
| Mine, Vine on trellis, Grass, Scrub                             |  |
| Palms: palmyra, other, Plantain, Conifer, Bamboo, Other trees   |  |
| Boundary: International   |  |
| state: demarcated, undemarcated                                 |  |
| district: subdiv, tahsil or taluk, forest                       |  |
| Boundary pillars: surveyed, unlocated, village junction         |  |
| Heights: triangulated, station, points: approximate             |  |
| Bench-mark: geodetic, tertiary, canal                           |  |
| Post office, Telegraph office, Combined office, Police, station |  |
| Bungalows: dak or travellers, Inspection, Rest-house            |  |
| Circuit house, Camping ground, Forest: reserved, protected      |  |
| Spaced names: administrative, locality or tribal                |  |

Reg. No. 3572 PZ/2010 (N.C. 33-135,343)-7700 9th Revision 17/04/03

|   |  |
|---|--|
| Roads: metalled, according to importance; distance stone            |  |
| Cart-track, Pack-track and pass, Foot path with bridge              |  |
| Bridges: with river, without, Causeway, Ford or Ferry               |  |
| Streams: with track in bed, undefined, Canal                        |  |
| Dams: masonry or rock-filled, earthen, Weir                         |  |
| River banks: shaling, steep, 3 to 6 metres, over 6 metres           |  |
| dry with water channel, with island & rocks, Tidal river            |  |
| Submerged rocks, Shoal, Swamp, Reeds                                |  |
| Wells: lined, unlined, Tube-well, Spring, Tanks: perennial, dry     |  |
| Embankments: road or rail, tank, Broken ground                      |  |
| Railways: broad gauge, double, single with station, under constr.   |  |
| other gauges: do.; w. with distance stone, do.                      |  |
| Mineral line or tramway, Telegraph line, Cutting with tunnel        |  |
| Contours with sub-features, Rocky slopes, Cliffs                    |  |
| Sand features: dune, dune hill and dune, dune ridge, shifting dunes |  |

NOTE

- A. Distance between Project and Proposed STR ESZ ( P2 - S1 ) = 2.13 KM  
B. Distance between Project and Chandoli NP 10 KM Periphery ( P2 - D1 ) = 10.57 KM  
C. Distance between Project and Koyna Sanctuary Boundary ( STR PA ) ( P2 - P2 ) = 0 KM  
D. Distance between Project and STR Core Boundary ( STR PA ) ( P1 - C1 ) = 1.89 KM



**SURVE INFOTECH PVT. LTD.**  
1st Floor, Kolhapur Engg. Assn. Bldg.,  
Shivaji Udyamnagar, Kolhapur-416 008,  
Maharashtra (INDIA), Ph. : (0231) 285436, 3096938  
Reg. No. : MH15E0003738