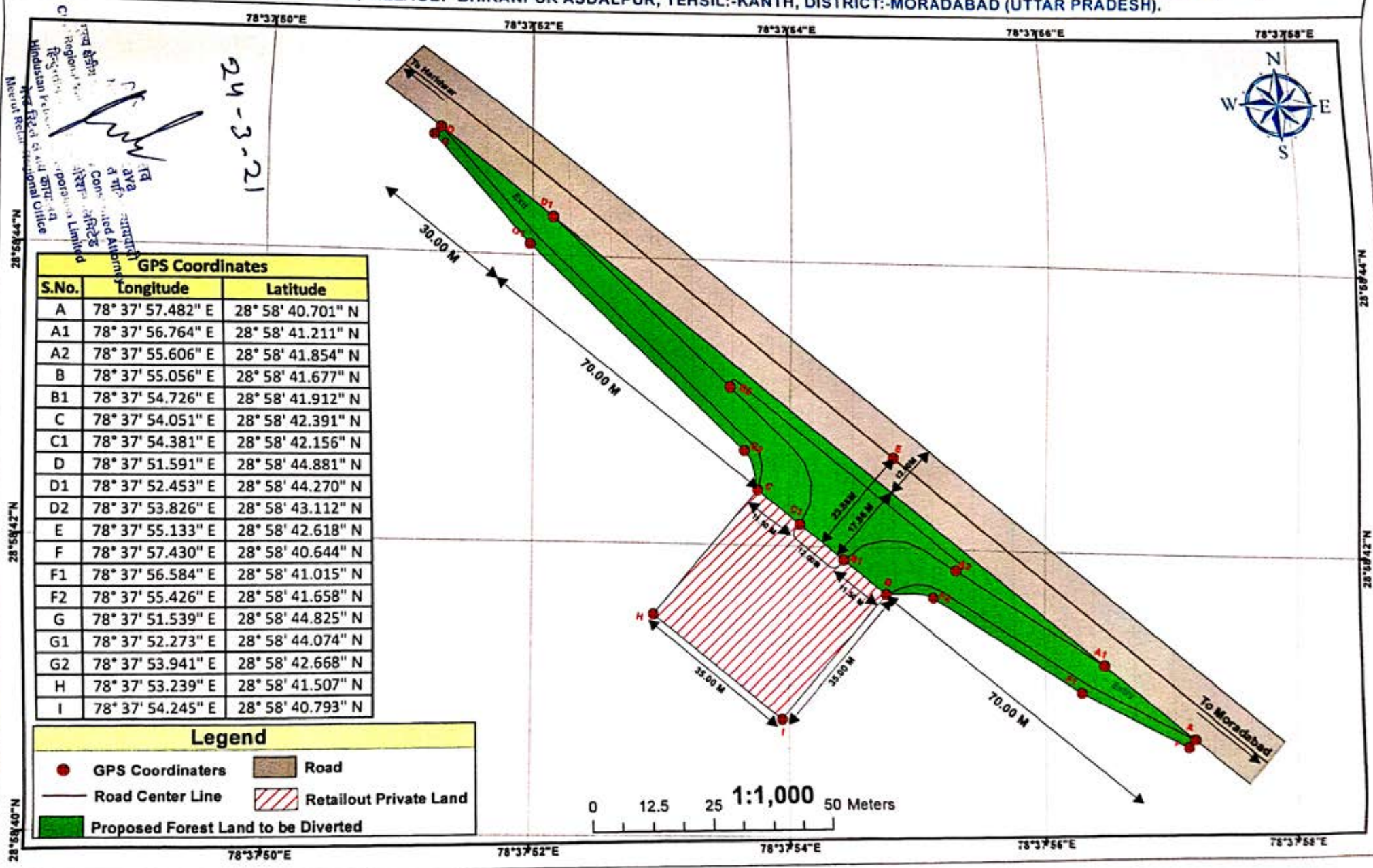


**GEOREFERENCED MAP OF PROPOSED PROTECTED FOREST LAND TO BE DIVERTED FOR ENTRY/EXIT APPROACH TO HINDUSTAN PETROLEUM CORPORATION LIMITED RETAIL OUTLET ON MORADABAD-HARIDWAR-DEHRADUN (MORADABAD-KANTH) ROAD (SH-49) IN KM. NO. 21 (CH. NO. 20.698, LHS) AT GATA NO-136, VILLAGE:- BHIKANPUR ASDALPUR, TEHSIL:-KANTH, DISTRICT:-MORADABAD (UTTAR PRADESH).**



24-3-21

Regional Office  
 Hindustan Petroleum Corporation Limited  
 Moradabad Regional Office  
 N. 27° 58' 38.82"  
 N. 27° 58' 42" N  
 N. 27° 58' 40" N

GPS Coordinates		
S.No.	Longitude	Latitude
A	78° 37' 57.482" E	28° 58' 40.701" N
A1	78° 37' 56.764" E	28° 58' 41.211" N
A2	78° 37' 55.606" E	28° 58' 41.854" N
B	78° 37' 55.056" E	28° 58' 41.677" N
B1	78° 37' 54.726" E	28° 58' 41.912" N
C	78° 37' 54.051" E	28° 58' 42.391" N
C1	78° 37' 54.381" E	28° 58' 42.156" N
D	78° 37' 51.591" E	28° 58' 44.881" N
D1	78° 37' 52.453" E	28° 58' 44.270" N
D2	78° 37' 53.826" E	28° 58' 43.112" N
E	78° 37' 55.133" E	28° 58' 42.618" N
F	78° 37' 57.430" E	28° 58' 40.644" N
F1	78° 37' 56.584" E	28° 58' 41.015" N
F2	78° 37' 55.426" E	28° 58' 41.658" N
G	78° 37' 51.539" E	28° 58' 44.825" N
G1	78° 37' 52.273" E	28° 58' 44.074" N
G2	78° 37' 53.941" E	28° 58' 42.668" N
H	78° 37' 53.239" E	28° 58' 41.507" N
I	78° 37' 54.245" E	28° 58' 40.793" N

Legend	
<span style="color:red">●</span>	GPS Coordinaters
	Road
	Retailout Private Land
	Proposed Forest Land to be Diverted
	Road Center Line

