

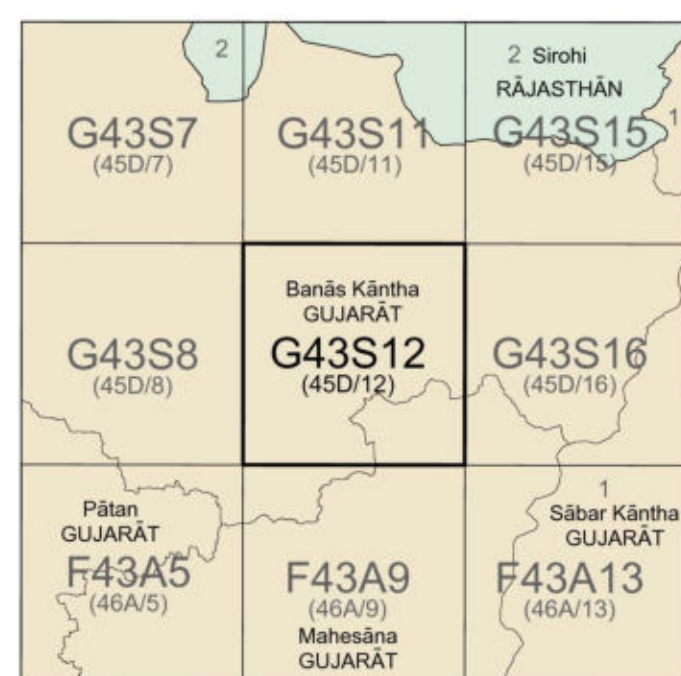


निर्वात के लिए नहीं NOT FOR EXPORT

OPEN SERIES  
MAP

No. G43S12

Scale 1:50,000



भारतीय सर्वेक्षण विभाग

SURVEY OF INDIA

1st Edition 2011.

Price : Rs. 70/-

#### CONVENTIONAL SYMBOLS

- Express highway, with toll, with bridge, with distance stone  
Roads, metalled, according to importance  
Roads, double cartway, according to importance  
Unmetalled road, Cart-track, Pack-track with pass, Foot-path  
Streams, with track in bed, undefined, Canal  
Dams, masonry or rock-filled, earthwork, Weir  
River, dry with water channel, with island & rocks, Tidal river  
Submerged rocks, Shoal, Swamp, Reeds  
Well, lined, unlined, Tube-well, Spring, Tanks, perennial, dry  
Embankments, road or rail, bank, bridge, ground  
Railways, broad gauge, double, single with station, under construction  
Railways, other gauges, double, single with distance stone, do  
Mineral line or tramway, Kils, Cutting with tunnel  
Contours with sub-features, Rocky slopes, Cliffs  
Sand features (1 flat, 2 sand-hills, 3 dunes, 4 shifting)  
Towns or Villages, inhabited, deserted, Fort  
Huts, permanent, temporary, Tower, Antiquities  
Temple, Chhatra, Church, Mosque, Jagin, Tomb, Graves  
Lighthouse, Lightship, Buoys, lighted, unlighted, Anchorage  
Mine, Vene on trellis, Grass, Scrub  
Palms, palm-trees, other, Plantain, Conifer, Bamboo, Other trees  
Areas, cultivated, wooded, Surveyed tree  
Boundary, international  
state, demarcated, undemarcated  
district, subdivision, taluk or taluk, forest  
Boundary pillars, surveyed, unlocated  
Heights, triangulated, station, point, approximate  
Bench-mark, geodetic, tertiary, canal  
Post office, Overhead tank  
Rest house or inspection bungalow, Circuit house, Police station  
Camping ground, Forest, reserved, protected  
Spaced names administrative, locality or tribal  
Hospital, Dispensary, Veterinary Hospital / Dispensary  
Aerodrome, Helipad, Tourist site  
Power line, with pylons surveyed, with poles unsurveyed

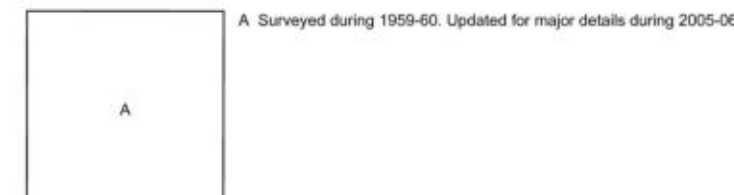
#### REFERENCE

Dep Depression

#### NOTES

- Heights are in metres and above Indian mean sea level.  
Contours are approximate.  
A relative height,  $\Delta$ , represents the approximate height, in metres, between the top and bottom of a steep slope.  
The triangulated heights and contours in this sheet have not been adjusted to the heights of the spirit-levelled bench-marks and are not strictly in accordance with them, but the discrepancy is unlikely to exceed 2 metres.  
Tanks, shown dry, in this area usually contain water from July to October.  
A relative height,  $\Delta$ , is signified as well, in blue, indicates its total depth in metres.  
In sand areas, cultivation is periodic and dependent on rainfall.

#### COMPILATION INDEX



Projection - UTM Datum - WGS 84

Magnetic Variation from True North about 6 in 2005.  
(increasing by about 1° East annually)

1:50,000

500 m to 1 cm  
Metres 1000 500 0 1 2 3 Kilometres

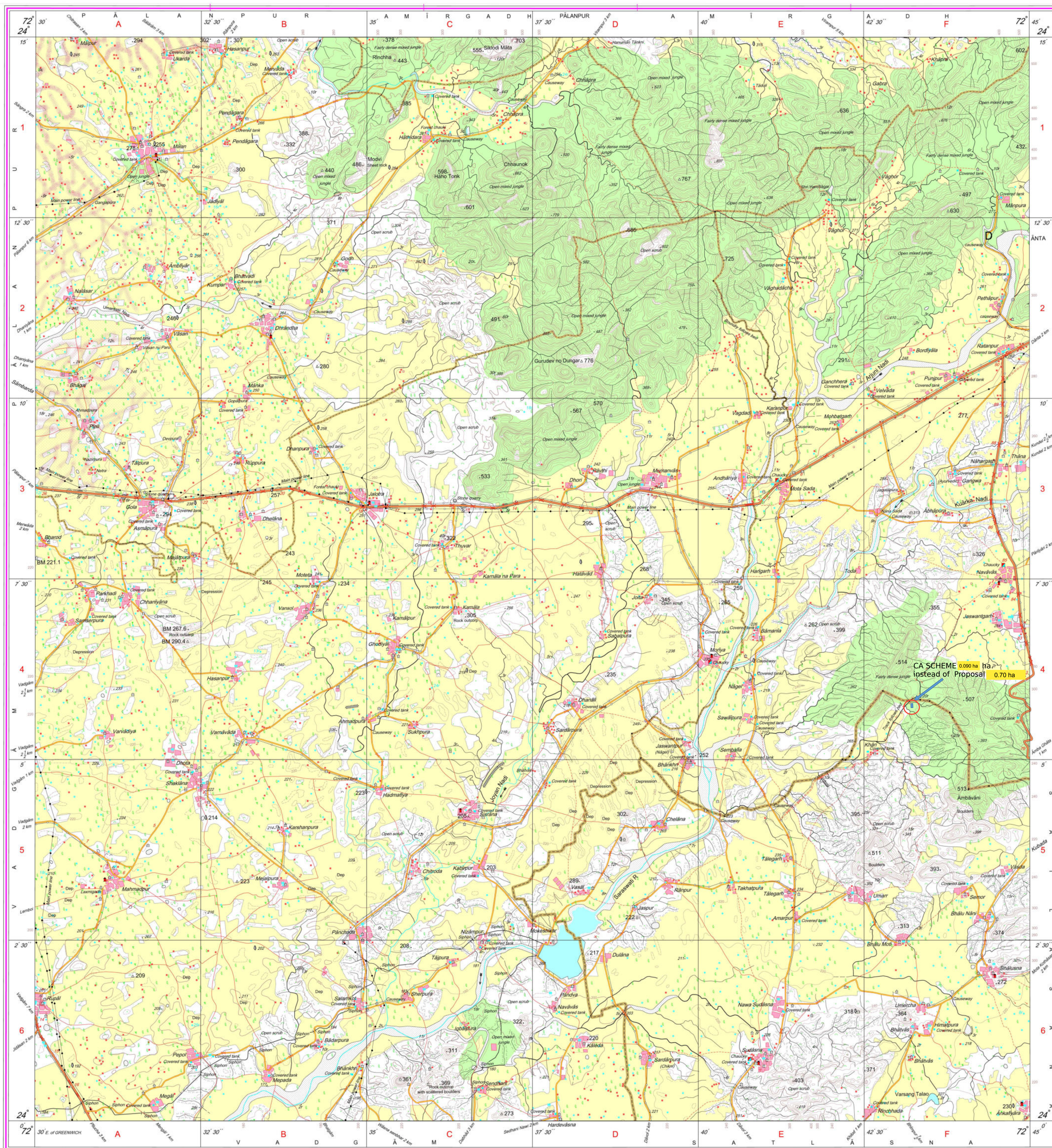
CONTOUR INTERVAL 20 METRES

For further details about this map, please contact  
Director  
Gujarat, Damán & Diu Geo-Spatial Data Centre  
Survey of India, Sector 10(A)  
Gandhinagar.

WEBSITE - [www.surveyofindia.gov.in](http://www.surveyofindia.gov.in)

Reproduction in whole or part by any means is prohibited  
without the written permission of Survey of India, the  
National Mapping Agency.

GOVERNMENT OF INDIA COPYRIGHT, 2011.



REG. No. - SPG D11 (GD&D QDC-1:50,000).

भारत के महसूरीक, सर्वेक्षण विभाग, नई दिल्ली, के निर्देश में प्रकाशित,  
Published under the direction of Swarna Subba Rao, B.E., Surveyor General of India,  
Survey of India, Haimbarkata Estate, Post Box No. 37, Dehra Dun-248001 (Uttarakhand)  
Department of Science & Technology, Government of India.

PRINTED AT THE SOUTHERN PRINTING GROUP OF SURVEY OF INDIA.