

BRAHMAPURI LEASE AND FOREST BOUNDARIES ON TOPOSHEET NO - F44/G16



No. F44G16
Scale 1:50,000

F44G11 55/11	F44G15 55/15	F44H3 55N/3
F44G12 55/12	F44G16 55/16	F44H4 55N/4
F44M9 55K/9	F44M13 55K/13	F44N1 55O/1

1 Bhojpur, MADHYA PRADESH
2 Noida, MADHYA PRADESH
3 Sonbhadra, MADHYA PRADESH

भारतीय सर्वेक्षण विभाग SURVEY OF INDIA

1st Edition 2009

Price : Rs. 50 / -

CONVENTIONAL SYMBOLS

Digress highway with left and right side with distance stone	
Road, metalled, according to importance	
Road, double cartage-way, according to importance	
Unmetalled road, cart-track, push-track with pass, foot-path	
Stream: with track in bed, underfoot, canal	
Dam: masonry or masonry with stone	
Stream dry with water channel, with stone or brick	
Submerged road, bridge, railway, road	
Water: pond, tank, lake, spring, water, permanent, dry	
Enclosure: mud or wall, tank, broken ground	
Railway, broad gauge, double, single with station, under station	
Railway, narrow gauge, double, single with station, under station	
Mine: shaft or tunnel, shaft, cutting with tunnel	
Contour with sub features, rocky ground, cliff	
Band features: (ghat, stream, hill, pass, road, stream, road)	
Town or Village: inhabited, deserted, Fort	
Hotel, permanent, temporary, Town, Arid, public	
Temple, Church, Mosque, light, Tank, shrine	
Light house, Lighthouse, Beacon, light, unlighted, Anchorage	
Mine: shaft or tunnel, shaft, cutting with tunnel	
Palace, palace, other, Palace, other, Palace, other	
Area: cultivated, wooded, Surveyed line	
Boundary, International	
State boundary, International	
Boundary of reserved forest, reserved	
Height, triangulation, station, point, triangulation	
Height, triangulation, station, point, triangulation	
Post office, Telegraph office, Overhead tank	
Rail house or inspection house, Chalk house, Police station	
Camping ground, Forest, reserved, protected	
Reserved forest, department, land, or other	
Hospital, Dispensary, Veterinary Hospital, Dispensary	
Airfield, Helipad, Tourist site	
Power line with pylons, unarmoured, with poles, unarmoured	

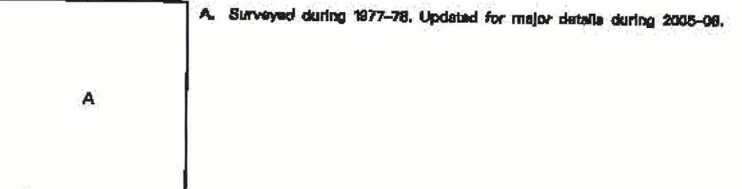
REFERENCES

SEF South Eastern Railway OF Central Railway Area Partake Branch

NOTES

Heights are in metres and above Indian mean sea level.
Contours are approximate.
A red line with dots represents the approximate height, in metres, between the top and bottom of a steep slope.

COMPILED INDEX



Projection - UTM Datum - WGS 84

Magnetic Variation from True North about 1° West in 2005, decreasing by about 1° annually.

Scale 1:50,000
500 m to 1 cm
2 cm to 1 km
CONTINENTAL INTERVAL 20 METRES

For further details about this map, please contact

Director

Madhya Pradesh Geo-Spatial Data Centre

Survey of India

Survey Colony, Vijaynagar

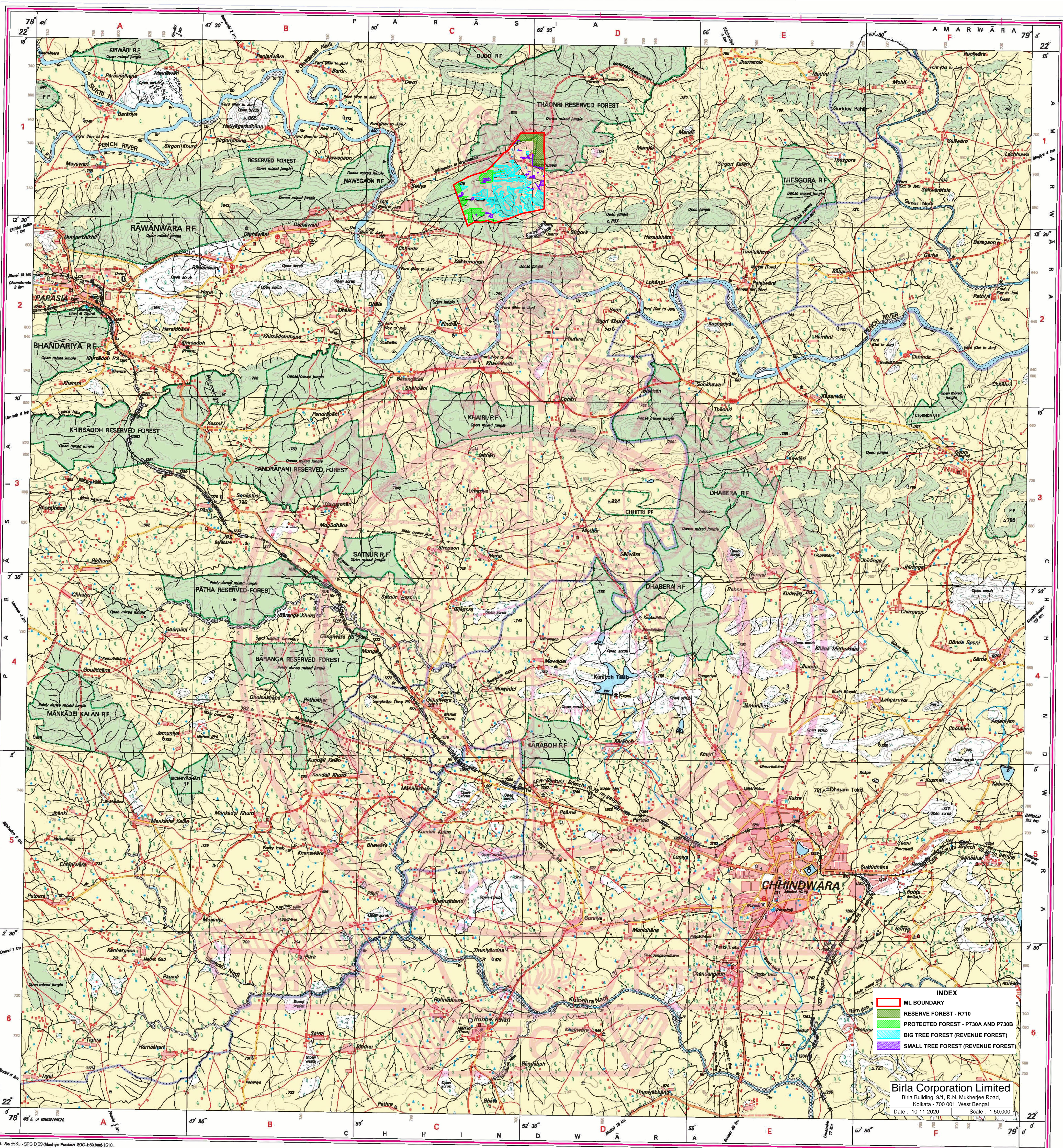
Jabalpur

Fax : 0781 - 2544853

WEBSITE - www.surveyofindia.gov.in

Reproduction in whole or part by any means is prohibited without the written permission of Survey of India, the National Mapping Agency.

GOVERNMENT OF INDIA, COPYRIGHT, 2009



REG. No. 3532 - SPG 03 (Madhya Pradesh) GDC (S. 0.06) 1510
Printed under the direction of Survey of India, Department of Science & Technology, Government of India.
PRINTED AT THE NORTHERN PRINTING GROUP OF SURVEY OF INDIA.