

निर्वात के लिए नहीं NOT FOR EXPORT

OPEN SERIES MAP

No. G46F11

Scale 1:50,000

G46F6 (83M/6)	G46F10 (83M/10)	G46F14 (83M/14)
G46F7 (83M/7)	G46F11 (83M/11)	G46F15 (83M/15)
G46F8 (83M/8)	G46F12 (83M/12)	G46F16 (83M/16)

1 Tirap, ARUNACHAL PRADESH.  
2 Changlang, ARUNACHAL PRADESH.

भारतीय सर्वेक्षण विभाग

SURVEY OF INDIA

1st Edition 2011.

Plotter Sheet No. 771

CONVENTIONAL SYMBOLS

Express highway, with toll, with bridge, with distance stone, etc.

Roads, metalled, according to importance, etc.

Roads, double carriageway, according to importance, etc.

Unmetalled road, Cart track, Pack-track with pass, Foot-path, etc.

Streams, with track in bed, undammed, Canal, etc.

Dams, masonry or rock-filled, earthwork, Weir, etc.

River, dry with water channel, with island & rocks, Tidal river, etc.

Submerged rocks, Shoal, Swamp, Reeds, etc.

Wells, lead, unlined, Tube-well, Spring, Tank, perennial, dry, etc.

Embankments, road or rail, Bank, Broken ground, etc.

Railways, broad gauge, double, single with station, under construction, etc.

Railways, other gauge, double, single with distance stone, do, etc.

Mineral line or tramway, Kin, Cutting with tunnel, etc.

Contours with sub-features, Rocky slopes, Cliffs, etc.

Sand features (if flat, (Zyend-Nills) permanent), (Cydonia) (shifting), etc.

Towns or Villages, inhabited, deserted, Fort, etc.

Huts, permanent, temporary, Tower, Antiquities, etc.

Temple, Chhatra, Church, Mosque, Idgah, Tomb, Graves, etc.

Lighthouse, Lightship, Buoy, lighted, unlighted, Anchorage, etc.

Mine, Vine on traffic, Grass, Scrub, etc.

Palms, palmrya, other Plantain, Conifer, Bamboo, Other trees, etc.

Areas, cultivated, wooded, Surveyed tree, etc.

Boundary, international, etc.

state, demarcated, undemarcated, etc.

district, subdivision, tahsil or Taluk, forest, etc.

Boundary pillars, surveyed, unlocated, etc.

Height, triangulated, station, point, approximate, etc.

Bench-mark, geodetic, tertiary, canal, etc.

Post office, Telegraph office, Overhead tank, etc.

Rest house or inspection bungalow, Circuit house, Police station, etc.

Camping ground, Forest, reserved, protected, etc.

Spaced names: administrative, locality or tribal, etc.

Hospital, Dispensary, Veterinary, Hospital / Dispensary, etc.

Aerodromes, Helipad, Tourist site, etc.

Power line, with pylons surveyed, with poles unsurveyed, etc.

REFERENCES

NH 38 National Highway No. 38

TG Tea Garden

NOTES :-

Heights and Contours have not been shown.

A relative height, e.g., 50, represents the approximate height, in metres, between the top and bottom of a steep slope.

Important buildings are shown in black with names.

The state boundary between Arunachal Pradesh and Assam shown on this map is as interpreted from the North-Eastern Areas (Re-organisation) Act 1971, but has not been verified by the Government concerned.

International Boundary in the adjoining sheet in Administrative Index has not been shown.

Jail or temporarily cultivated areas occur throughout the jungle, they are normally abandoned after 2-3 years and are not shown.

Almsghar shown in this sheet are community worshipping places.

Barel trees are shown thus

COMPILATION INDEX

A. Surveyed during 1953-64. Updated for major details during 2004-05.

Projection - UTM Datum - WGS 84

Magnetic Variation from True North about 1° West in 2005. (Decreasing by about 1° annually).

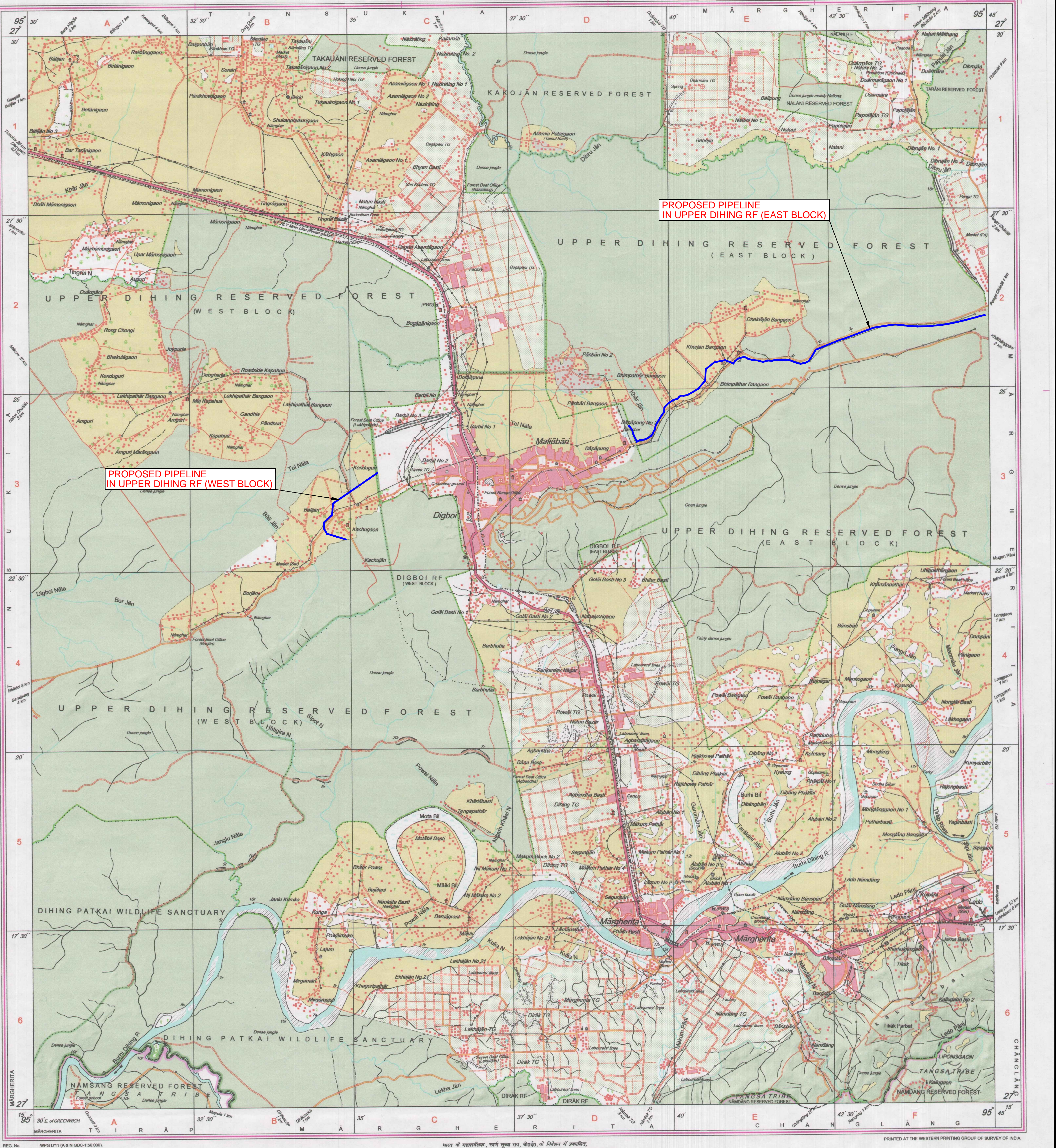
500 m to 1 cm 1:50,000 2 cm to 1 km

For further details about this map, please contact  
Director  
Assam & Nagaland Geo-Spatial Data Centre  
Survey of India, Ganeshguri Chariali, Dispur  
Guwahati.

WEBSITE - www.surveyofindia.gov.in

Reproduction in whole or part by any means is prohibited without the written permission of Survey of India, the National Mapping Agency.

GOVERNMENT OF INDIA COPYRIGHT, 2011.



LENGTH OF FOREST LAND DIVERSION FOR PROPOSED PIPELINE IN UPPER DIHING R.F. (EAST BLOCK) = 11.15 KM  
WIDTH OF PIPELINE CORRIDOR 15 MTS  
DIVERSION AREA UNDER UPPER DIHING R.F. (EAST BLOCK) 11150.09 X 15 = 16.73 HA (167251 SQM)

LENGTH OF FOREST LAND DIVERSION FOR PROPOSED PIPELINE IN UPPER DIHING R.F. (WEST BLOCK) = 2.816 KM  
WIDTH OF PIPELINE CORRIDOR 15 MTS  
DIVERSION AREA UNDER UPPER DIHING R.F. (WEST BLOCK) 2815.93 X 15 = 4.22 HA (42239 SQM)

TOTAL DIVERSION AREA UNDER UPPER DIHING RF (EAST & WEST BLOCK) 16.73 + 4.22 = 20.95 HA

LIST OF BOUNDARY PILLARS COORDINATES														
UPPER DIHING RF (WEST BLOCK)														
L1	27°23'51.3395"	95°35'26.5312"	L2	27°26'1.0349"	95°44'59.4389"	R1	27°26'7.5099"	95°44'59.3401"	L22	27°25'29.2362"	95°41'47.6593"	R22	27°25'29.7236"	95°41'47.6599"
R1	27°23'51.8934"	95°35'26.4765"	L3	27°26'6.3615"	95°44'55.4712"	R2	27°26'6.8358"	95°44'55.3440"	L23	27°25'29.3887"	95°41'47.9363"	R23	27°25'29.8789"	95°41'47.8730"
L2	27°23'26.4664"	95°34'44.0367"	L4	27°26'2.4592"	95°44'37.2869"	R3	27°26'5.0086"	95°44'50.2229"	L24	27°25'28.8781"	95°41'39.5835"	R24	27°25'29.3695"	95°41'39.5250"
L3	27°23'26.1940"	95°34'44.5611"	L5	27°26'2.9927"	95°44'36.9751"	R4	27°26'1.9853"	95°44'37.4138"	L25	27°25'29.1001"	95°41'35.6541"	R25	27°25'29.5916"	95°41'35.5934"
L4	27°23'16.9328"	95°34'43.7858"	L6	27°25'58.9927"	95°42'47.5627"	R5	27°25'58.8104"	95°44'19.1635"	L26	27°25'27.8580"	95°41'31.1898"	R26	27°25'28.3648"	95°41'31.1879"
R3	27°23'17.1612"	95°34'43.2577"	L7	27°25'47.3576"	95°42'47.5627"	R6	27°25'58.8104"	95°44'19.1635"	L27	27°25'28.9602"	95°41'27.1659"	R27	27°25'29.4414"	95°41'27.2650"
L5	27°23'5.9707"	95°34'35.7293"	L9	27°25'47.5627"	95°42'47.5627"	R7	27°25'58.8104"	95°44'19.1635"	L28	27°25'30.2228"	95°41'20.7747"	R28	27°25'30.6854"	95°41'20.8468"
R5	27°23'5.8566"	95°34'35.1768"	L10	27°25'47.5627"	95°42'47.5627"	R8	27°25'58.8104"	95°44'19.1635"	L29	27°25'31.7163"	95°41'13.5628"	R29	27°25'32.2387"	95°41'13.5976"
L6	27°23'1.4217"	95°34'38.5312"	L11	27°25'47.5627"	95°42'47.5627"	R9	27°25'58.8104"	95°44'19.1635"	L30	27°25'30.0161"	95°41'7.7093"	R30	27°25'30.4436"	95°41'7.4175"
R6	27°23'1.0165"	95°34'38.1580"	L12	27°25'47.5627"	95°42'47.5627"	R10	27°25'58.8104"	95°44'19.1635"	L31	27°25'25.2000"	95°41'3.2099"	R31	27°25'25.7799"	95°41'3.0900"
L7	27°22'56.2562"	95°34'56.7104"	L13	27°25'47.5627"	95°42'47.5627"	R11	27°25'58.8104"	95°44'19.1635"	L32	27°25'26.7825"	95°40'58.8306"	R32	27°25'27.2970"	95°40'58.9616"
L8	27°25'38.1273"	95°42'20.7553"	L14	27°25'47.5627"	95°42'47.5627"	R12	27°25'58.8104"	95°44'19.1635"	L33	27°25'24.9433"	95°40'46.9085"	R33	27°25'25.4025"	95°40'46.6807"
L14	27°25'38.1273"	95°42'20.7553"	L15	27°25'38.1273"	95°42'20.7553"	R13	27°25'58.8104"	95°44'19.1635"	L34	27°25'18.4609"	95°40'37.2303"	R34	27°25'18.4609"	95°40'36.7012"
L16	27°25'32.5180"	95°42'17.3556"	L16	27°25'32.5180"	95°42'17.3556"	R14	27°25'58.8104"	95°44'19.1635"	L35	27°25'16.9199"	95°40'36.4113"	R35	27°25'16.9199"	95°40'35.8783"
L17	27°25'28.6630"	95°42'14.2093"	L17	27°25'28.6630"	95°42'14.2093"	R15	27°25'58.8104"	95°44'19.1635"	L36	27°25'16.9199"	95°40'36.4113"	R36	27°25'16.9199"	95°40'35.8783"
L18	27°25'27.0786"	95°42'10.7867"	L18	27°25'27.0786"	95°42'10.7867"	R16	27°25'58.8104"	95°44'19.1635"	L37	27°24'58.2539"	95°40'28.0785"	R37	27°24'58.6395"	95°40'27.7314"
L19	27°25'26.3380"	95°42'6.5366"	L19	27°25'26.3380"	95°42'6.5366"	R17	27°25'58.8104"	95°44'19.1635"	L38	27°24'52.7251"	95°40'17.7549"	R38	27°24'53.6519"	95°40'17.5790"
L20	27°25'26.8085"	95°42'3.9035"	L20	27°25'26.8085"	95°42'3.9035"	R18	27°25'58.8104"	95°44'19.1635"	L39	27°24'52.8728"	95°40'14.0795"	R39	27°24'53.3666"	95°40'14.2328"
L21	27°25'29.6478"	95°41'55.1004"	L21	27°25'29.6478"	95°41'55.1004"	R19	27°25'58.8104"	95°44'19.1635"	L40	27°24'52.6371"	95°40'11.5627"	R40	27°24'53.0971"	95°40'11.3693"
L22	27°25'29.2362"	95°41'47.6593"	L22	27°25'29.2362"	95°41'47.6593"	R20	27°25'58.8104"	95°44'19.1635"	L41	27°24'52.1878"	95°40'10.6219"	R41	27°24'52.5713"	95°40'10.2682"
L23	27°25'29.3887"	95°41'47.9363"	L23	27°25'29.3887"	95°41'47.9363"	R21	27°25'58.8104"	95°44'19.1635"	L42	27°24'52.1878"	95°40'10.6219"	R42	27°24'52.5713"	95°40'10.2682"
L24	27°25'28.8781"	95°41'39.5835"	L24	27°25'28.8781"	95°41'39.5835"	R22	27°25'58.8104"	95°44'19.1635"	L43	27°24'52.1878"	95°40'10.6219"	R43	27°24'52.5713"	95°40'10.2682"
L25	27°25'29.1001"	95°41'35.6541"	L25	27°25'29.1001"	95°41'35.6541"	R23	27°25'58.8104"	95°44'19.1635"	L44	27°24'52.1878"	95°40'10.6219"	R44	27°24'52.5713"	95°40'10.2682"
L26	27°25'27.8580"	95°41'31.1898"	L26	27°25'27.8580"	95°41'31.1898"	R24	27°25'58.8104"	95°44'19.1635"	L45	27°24'52.1878"	95°40'10.6219"	R45	27°24'52.5713"	95°40'10.2682"
L27	27°25'28.9602"	95°41'27.1659"	L27	27°25'28.9602"	95°41'27.1659"	R25	27°25'58.8104"	95°44'19.1635"	L46	27°24'52.1878"	95°40'10.6219"	R46	27°24'52.5713"	95°40'10.2682"
L28	27°25'30.2228"	95°41'20.7747"	L28	27°25'30.2228"	95°41'20.7747"	R26	27°25'58.8104"	95°44'19.1635"	L47	27°24'52.1878"	95°40'10.6219"	R47	27°24'52.5713"	95°40'10.2682"
L29	27°25'31.7163"	95°41'13.5628"	L29	27°25'31.7163"	95°41'13.5628"	R27	27°25'58.8104"	95°44'19.1635"	L48	27°24'52.1878"	95°40'10.6219"	R48	27°24'52.5713"	95°40'10.2682"
L30	27°25'30.0161"	95°41'7.7093"	L30	27°25'30.0161"	95°41'7.7093"	R28	27°25'58.8104"	95°44'19.1635"	L49	27°24'52.1878"	95°40'10.6219"	R49	27°24'52.5713"	95°40'10.2682"
L31	27°25'25.2000"	95°41'3.2099"	L31	27°25'25.2000"	95°41'3.2099"	R29	27°25'58.8104"	95°44'19.1635"	L50	27°24'52.1878"	95°40'10.6219"	R50	27°24'52.5713"	95°40'10.2682"
L32	27°25'26.7825"	95°40'58.8306"	L32	27°25'26.7825"	95°40'58.8306"	R30	27°25'58.8104"	95°44'19.1635"	L51	27°24'52.1878"	95°40'10.6219"	R51	27°24'52.5713"	95°40'10.2682"
L33	27°25'24.9433"	95°40'46.9085"	L33	27°25'24.9433"	95°40'46.9085"	R31	27°25'58.8104"	95°44'19.1635"	L52	27°24'52.1878"	95°40'10.6219"	R52	27°24'52.5713"	95°40'10.2682"
L34	27°25'18.4609"	95°40'37.2303"	L34	27°25'18.4609"	95°40'37.2303"	R32	27°25'58.8104"	95°44'19.1635"	L53	27°24'52.1878"	95°40'10.6219"	R53	27°24'52.5713"	95°40'10.2682"
L35	27°25'16.9199"	95°40'36.4113"	L35	27°25'16.9199"	95°40'36.4113"	R33	27°25'58.8104"	95°44'19.1635"	L54	27°24'52.1878"	95°40'10.6219"	R54	27°24'52.5713"	95°40'10.2682"
L36	27°25'16.9199"	95°40'36.4113"	L36	27°25'16.9199"	95°40'36.4113"	R34	27°25'58.8104"	95°44'19.1635"	L55	27°24'52.1878"	95°40'10.6219"	R55	27°24'52.5713"	95°40'10.2682"
L37	27°24'58.2539"	95°40'28.0785"	L37	27°24'58.2539"	95°40'28.0785"	R35	27°25'58.8104"	95°44'19.1635"	L56	27°24'52.1878"	95°40'10.6219"	R56	27°24'52.5713"	95°40'10.2682"
L38	27°24'53.6519"	95°40'17.5790"	L38	27°24'53.6519"	95°40'17.5790"	R36	27°25'58.8104"	95°44'19.1635"	L57	27°24'52.1878"	95°40'10.6219"	R57	27°24'52.5713"	95°40'10.2682"
L39	27°24'52.8728"	95°40'14.0795"	L39	27°24'52.8728"	95°40'14.0795"	R37	27°25'58.8104"	95°44'19.1635"	L58	27°24'52.1878"	95°40'10.6219"	R58	27°24'52.5713"	95°40'10.2682"
L40	27°24'52.6371"	95°40'11.5627"	L40	27°24'52.6371"	95°40'11.5627"	R38	27°25'58.8104"	95°44'19.1635"	L59	27°24'52.1878"	95°40'10.6219"	R59	27°24'52.5713"	95°40'10.2682"
L41	27°24'52.1878"	95°40'10.6219"	L41	27°24'52.1878"	95°40'10.6219"	R39	27°25'58.8104"	95°44'19.1635"	L60	27°24'52.1878"	95°40'10.6219"	R60	27°24'52.5713"	95°40'10.2682"
L42	27°24'52.1878"	95°40'10.6219"	L42	27°24'52.1878"	95°40'10.6219"	R40	27°25'58.8104"	95°44'19.1635"	L61	27°24'52.1878"	95°40'10.6219"	R61	27°24'52.5713"	95°40'10.2682"
L43	27°24'52.1878"	95°40'10.6219"	L43	27°24'52.1878"	95°40'10.6219"	R41	27°25'58.8104"	95°44'19.1635"	L62	27°24'52.1878"	95°40'10.6219"	R62	27°24'52.5713"	95°40'10.2682"
L44	27°24'52.1878"	95°40'10.6219"	L44	27°24'52.1878"	95°40'10.6219"	R42	27°25'58.8104"	95°44'19.1635"	L63	27°24'52.1878"	95°40'10.6219"	R63	27°24'52.5713"	95°40'10.2682"
L45	27°24'52.1878"	95°40'10.6219"	L45	27°24'52.1878"	95°40'10.6219"	R43	27°25'58.8104"	95°44'19.1635"	L64	27°24'52.1878"	95°40'10.6219"	R64	27°24'52.5713"	95°40'10.2682"
L46	27°24'52.1878"	95°40'10.6219"	L46	27°24'52.1878"	95°40'10.6219"	R44	27°25'58.8104"	95°44'19.1635"	L65	27°24'52.1878"	95°40'10.6219"	R65	27°24'52.5713"	95°40'10.2682"
L47	27°24'52.1878"	95°40'10.6219"	L47	27°24'52.1878"	95°40'10.6219"	R45	27°25'58.8104"	95°44'19.1635"	L66	27°24'52.1878"	95°40'10.6219"	R66	27°24'52.5713"	95°40'10.2682"
L48	27°24'52.1878"	95°40'10.6219"	L48	27°24'52.1878"	95°40'10.6219"	R46	27°25'58.8104"	95°44'19.1635"	L67	27°24'52.1878"	95°40'10.6219"	R67	27°24'52.5713"	95°40'10.2682"
L49	27°24'52.1878"	95°40'10.6219"	L49	27°24'52.1878"	95°40'10.6219"	R47	27°25'58.8104"	95°44'19.1635"	L68	27°24'52.1878"	95°40'10.6219"	R68	27°24'52.5713"	95°40'10.2682"
L50	27°24'52.1878"	95°40'10.6219"	L50	27°24'52.1878"	95°40'10.6219"	R48	27°25'58.8104"	95°44'19.1635"	L69	27°24'52.1878"	95°40'10.6219"	R69	27°24'52.5713"	95°40'10.2682"
L51	27°24'52.1878"	95°40'10.6219"	L51	27°24'52.1878"	95°40'10.6219"	R49	27°25'58.8104"	95°44'19.1635"	L70	27°24'52.1878"	95°40'10.6219"	R70	27°24'52.5713"	95°40'10.2682"
L52	27°24'52.1878"	95°40'10.6219"	L52	27°24'52.1878"	95°40'10.6219"	R50	27°25'58.8104"	95°44'19.1635"	L71	27°24'52.1878"	95°40'10.6219"	R71	27°24'52.5713"	95°40'10.2682"
L53	27°24'52.1878"	95°40'10.6219"	L53	27°24'52.1878"	95°40'10.6219"	R51	27°25'58.8104"	95°44'19.1635"	L72	27°24'52.1878"	95°40'10.6219"	R72	27°24'52.5713"	95°40'10.2682"
L54	27°24'52.1878"	95°40'10.6219"	L54	27°24'52.1878"	95°40'10.6219"	R52	27°25'58.8104"	95°44'19.1635"	L73	27°24'52.1878"	95°40'10.6219"	R73	27°24'52.5713"	95°40'10.2682"
L55	27°24'52.1878"	95°40'10.6219"	L55	27°24'52.1878"	95°40'10.6219"	R53	27°25'58.8104"	95°44'19.1635"	L74	27°24'52.1878"	95°40'10.6219"	R74	27°24'52.5713"	95°40'10.2682"
L56	27°24'52.1878"	95°40'10.6219"	L56	27°24'52.1878"	95°40'10.6219"	R54	27°25'58.8104"	95°44'19.1635"	L75	27°24'52.1878"	95°40'10.6219"	R75	27°24'52.5713"	95°40'10.2682"
L57	27°24'52.1878"	95°40'10.6219"	L57	27°24'52.1878"	95°40'10.6219"	R55	27°25'58.8104"	95°44'19.1635"	L76	27°24'52.1878"	95°40'10.6219"	R76	27°24'52.5713"	95°40'10.2682"
L58	27°24'52.1878"	95°40'10.6219"	L58	27°24'52.1878"	95°40'10.6219"	R56	27°25'58.8104"	95°44'19.1635"	L77	27°24'52.1878"	95°40'10.6219"	R77	27°24'52.5713"	95°40'10.2682"
L59	27°24'52.1878"	95°40'10.6219"	L59	27°24'52.1878"	95°40'10.6219"	R57	27°25'58.8104"	95°44'19.						

LIST OF BOUNDARY PILLARS COORDINATES UPPER DIHING RF (EAST BLOCK)																	
L1	27°26'7.0349"	95°44'59.4389"	R1	27°26'7.5099"	95°44'59.3401"	L22	27°25'29.2362"	95°41'47.6593"	R22	27°25'29.7236"	95°41'47.6599"	L43	27°24'50.3397"	95°40'8.9304"	R43	27°24'50.7679"	95°40'8.6176"
L2	27°26'6.3615"	95°44'55.4712"	R2	27°26'6.8358"	95°44'55.3440"	L23	27°25'29.3887"	95°41'47.9363"	R23	27°25'29.8789"	95°41'47.8730"	L44	27°24'49.3425"	95°40'4.8867"	R44	27°24'49.7930"	95°40'4.6642"
L3	27°26'5.0392"	95°44'50.3688"	R3	27°26'5.0086"	95°44'50.2229"	L24	27°25'28.8781"	95°41'39.5835"	R24	27°25'29.3695"	95°41'39.5250"	L45	27°24'46.7093"	95°40'0.1885"	R45	27°24'47.0927"	95°39'59.8463"
L4	27°26'2.4592"	95°44'37.2869"	R4	27°26'1.9853"	95°44'37.4138"	L25	27°25'29.1001"	95°41'35.6541"	R25	27°25'29.5916"	95°41'35.5934"	L46	27°24'43.7164"	95°39'56.8291"	R46	27°24'43.9934"	95°39'56.3676"
L5	27°25'58.9927"	95°44'26.9751"	R5	27°26'0.4712"	95°44'26.8723"	L26	27°25'27.8580"	95°41'31.1898"	R26	27°25'28.3648"	95°41'31.1879"	L47	27°24'42.8555"	95°39'56.4249"	R47	27°24'42.9722"	95°39'55.8864"
L6	27°25'58.1004"	95°44'19.1635"	R6	27°25'59.2936"	95°44'19.0916"	L27	27°25'28.9602"	95°41'27.1659"	R27	27°25'29.4414"	95°41'27.2650"	L48	27°24'41.2228"	95°39'39.2078"	R48	27°24'41.5000"	95°39'39.0000"
L7	27°25'57.6612"	95°44'5.7813"	R7	27°25'58.1479"	95°44'5.7507"	L28	27°25'29.3775"	95°41'20.7747"	R28	27°25'29.8622"	95°41'20.8468"	L49	27°24'35.2842"	95°39'52.6645"	R49	27°24'35.5513"	95°39'52.2072"
L8	27°25'57.5220"	95°43'56.0375"	R8	27°25'58.0093"	95°43'56.0503"	L29	27°25'30.2228"	95°41'17.1782"	R29	27°25'30.6854"	95°41'17.3578"	L50	27°24'28.2136"	95°39'48.0626"	R50	27°24'28.3947"	95°39'47.5493"
L9	27°25'57.9974"	95°43'47.5706"	R9	27°25'58.4828"	95°43'47.6171"	L30	27°25'31.7163"	95°41'13.5628"	R30	27°25'32.2387"	95°41'13.5976"	L51	27°24'24.7989"	95°39'47.1794"	R51	27°24'25.0179"	95°39'46.6759"
L10	27°25'58.2075"	95°43'35.0653"	R10	27°25'59.6963"	95°43'35.0583"	L31	27°25'30.0161"	95°41'7.7093"	R31	27°25'30.4436"	95°41'7.4175"	L52	27°24'23.8536"	95°39'46.3228"	R52	27°24'24.1060"	95°39'45.8495"
L11	27°25'58.2420"	95°43'27.0017"	R11	27°25'58.7239"	95°43'26.9202"	L32	27°25'25.2000"	95°41'3.2099"	R32	27°25'25.7799"	95°41'3.0900"	L53	27°24'21.0857"	95°39'45.0217"	R53	27°24'21.3388"	95°39'44.5489"
L12	27°25'56.5253"	95°43'15.0775"	R12	27°25'56.9985"	95°43'14.9371"	L33	27°25'26.7825"	95°40'58.8306"	R33	27°25'27.2970"	95°40'58.9616"	L54	27°24'19.3572"	95°39'43.4452"	R54	27°24'19.7362"	95°39'43.0871"
L13	27°25'47.3576"	95°42'47.5627"	R13	27°24'47.8249"	95°42'47.4046"	L34	27°25'24.9433"	95°40'46.9085"	R34	27°25'25.4025"	95°40'46.6807"	L55	27°24'17.2228"	95°39'36.8820"	R55	27°24'17.6683"	95°39'36.7615"
L14	27°25'46.5455"	95°42'44.0548"	R14	27°25'47.0095"	95°42'43.8890"	L35	27°25'18.2114"	95°40'37.2303"	R35	27°25'18.4609"	95°40'36.7012"	L56	27°24'15.2228"	95°39'33.8820"	R56	27°24'15.5000"	95°39'33.6000"
L15	27°25'48.1273"	95°42'40.7553"	R15	27°25'38.5153"	95°42'40.3716"	L36	27°25'16.7233"	95°40'36.4113"	R36	27°25'16.9699"	95°40'36.5783"	L57	27°24'12.2228"	95°39'30.8820"	R57	27°24'12.5000"	95°39'30.6000"
L16	27°25'32.5180"	95°42'17.3556"	R16	27°25'32.7750"	95°42'16.8925"	L37	27°24'58.2539"	95°40'28.0785"	R37	27°24'58.6395"	95°40'27.7314"	L58	27°24'08.2228"	95°39'23.8820"	R58	27°24'08.5000"	95°39'23.6000"
L17	27°25'28.6630"	95°42'14.2093"	R17	27°25'29.0288"	95°42'13.8488"	L38	27°24'53.1824"	95°40'17.7549"	R38	27°24'53.6951"	95°40'17.5790"	L59	27°24'03.2228"	95°39'19.8820"	R59	27°24'03.5000"	95°39'19.6000"
L18	27°25'27.0786"	95°42'10.7867"	R18	27°25'27.5446"	95°42'10.6039"	L39	27°24'52.7251"	95°40'14.0795"	R39	27°24'53.1992"	95°40'14.2328"	L60	27°24'00.2228"	95°39'16.8820"	R60	27°24'00.5000"	95°39'16.6000"
L19	27°25'26.3830"	95°42'56.3667"	R19	27°26'2.8250"	95°42'56.3339"	L40	27°24'52.8728"	95°40'12.7089"	R40	27°24'53.3666"	95°40'12.6795"	L61	27°23'58.2228"	95°39'13.8820"	R61	27°23'58.5000"	95°39'13.6000"
L20	27°25'26.8035"	95°42'43.9035"	R20	27°25'27.2768"	95°42'44.0419"	L41	27°24'52.6371"	95°40'11.5627"	R41	27°24'53.0717"	95°40'11.3693"	L62	27°23'55.2228"	95°39'10.8820"	R62	27°23'55.5000"	95°39'10.6000"
L21	27°25'28.6478"	95°41'55.1004"	R21	27°25'30.1391"	95°41'55.1831"	L42	27°24'52.1878"	95°40'10.6219"	R42	27°24'52.5171"	95°40'10.2689"	L63	27°23'52.2228"	95°39'07.8820"	R63	27°23'52.5000"	95°39'07.6000"