

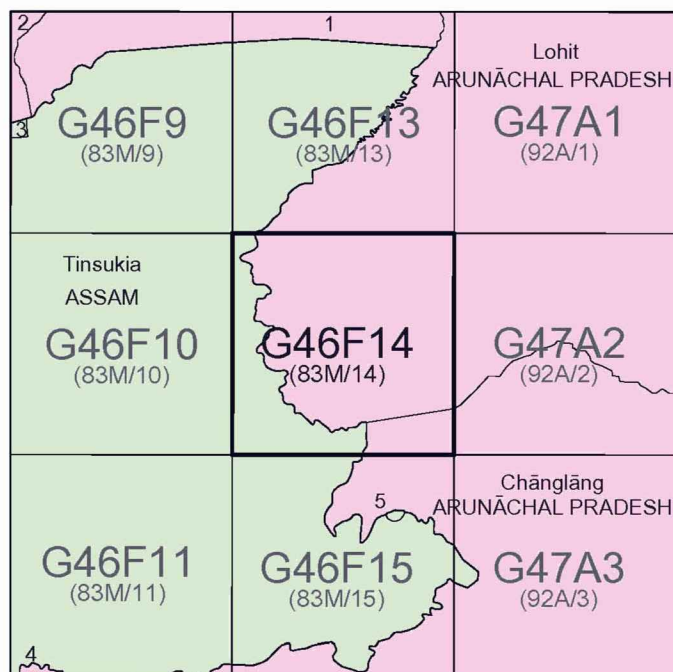


नियंत्रित के लिए नहीं NOT FOR EXPORT

OPEN SERIES
MAP

No. G46F14

Scale 1:50,000



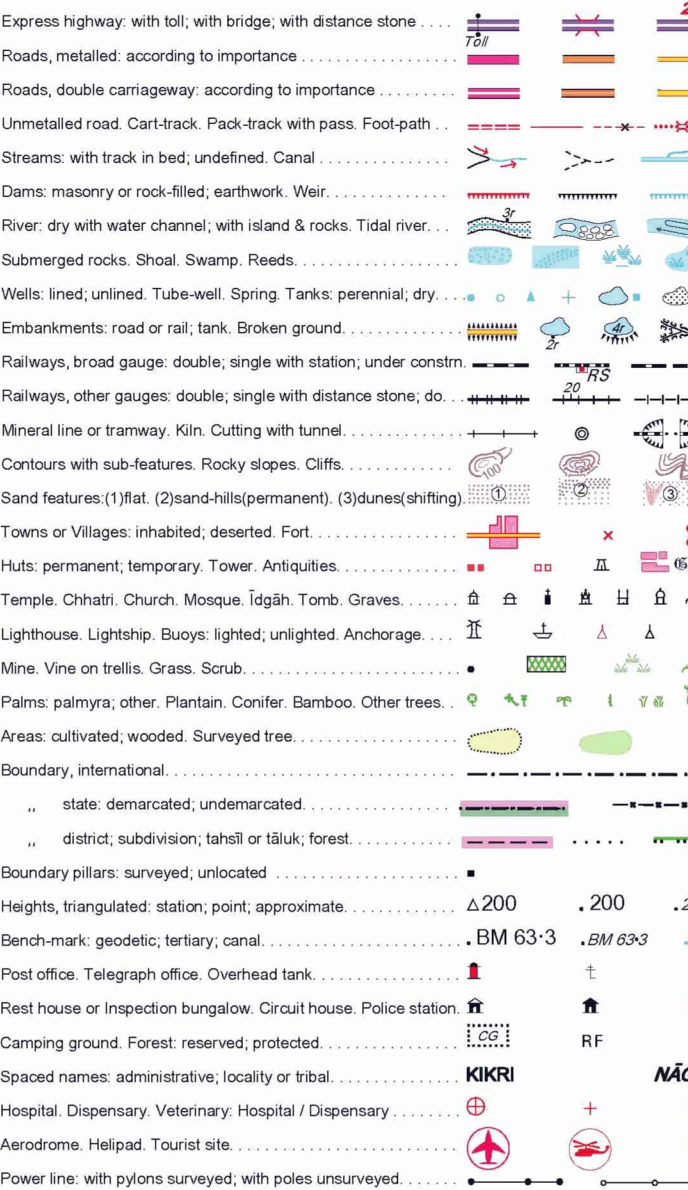
1 Lower Dibang Valley, ARUNACHAL PRADESH.
2 East Siang, ARUNACHAL PRADESH.
3 Lakhimpur, ASSAM.
4 Tripura, ARUNACHAL PRADESH.
5 DISPUTED.

भारतीय सर्वेक्षण विभाग SURVEY OF INDIA

1st Edition 2011.

Price : Rs. 77/-

CONVENTIONAL SYMBOLS

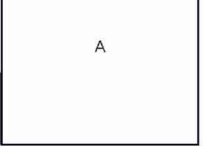


NOTES :-

Heights and contours have not been shown.
The state boundary between Arunachal Pradesh and Assam states shown on this map is as interpreted from the North Eastern area reorganisation act 1971, but has yet to be verified.
The district boundary between Chinglang and Lohit districts has been surveyed on the ground as pointed out by the local officials, but yet to be verified by the district authorities.
Names and boundaries of subdivisions of district of Arunachal Pradesh have not been shown for want of reliable information.
Nāmgangas shown in this sheet are commonly worshipping places.
Jāms or temporarily cultivated areas occur throughout the jungle; they are normally abandoned after 2-3 years and are not shown.
Betelnut trees are shown thus.....

COMPILATION INDEX

A. Surveyed during 1963-65. Updated for major details during 2005-06.



Projection - UTM Datum - WGS 84

Magnetic Variation from True North about 1° West in 2005.
(Increasing by about 2° annually).

1:50,000

Metres 1000 500 0 1 2 3 Kilometres

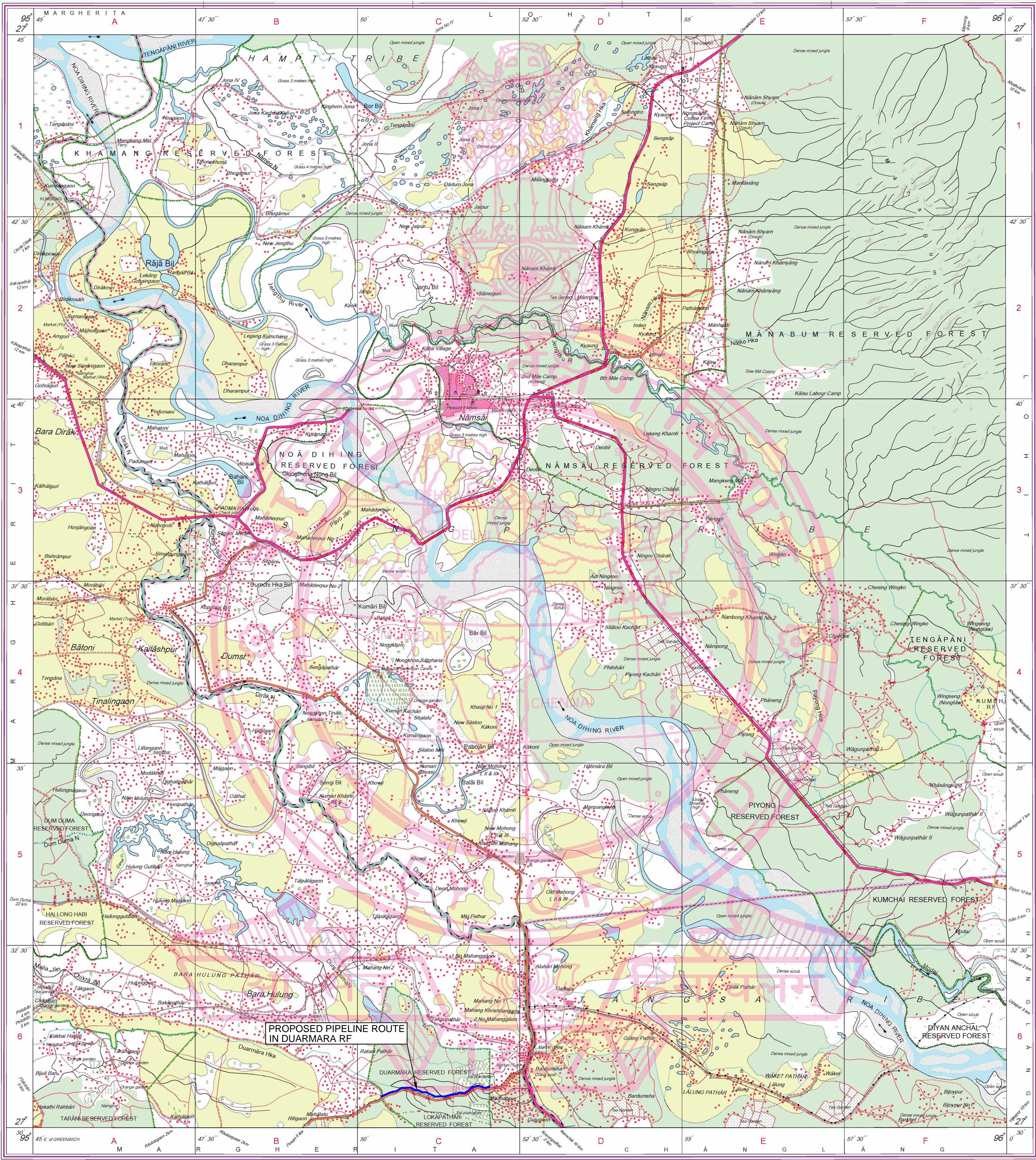
For further details about this map, please contact

Director
Meghalaya & Arunachal Pradesh Geo-Spatial Data Centre
Survey of India, Malik
Shilong

WEBSITE : www.surveyofindia.gov.in

Reproduction in whole or part by any means is prohibited
without the written permission of Survey of India, the
National Mapping Agency.

GOVERNMENT OF INDIA COPYRIGHT, 2011.

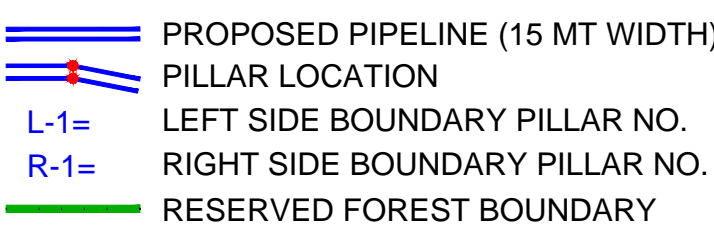


REG. No. P.D.F. - JWP D11 (M & A) P. GDC-150/2000.

PRINTED AT THE WESTERN PRINTING GROUP OF SURVEY OF INDIA.

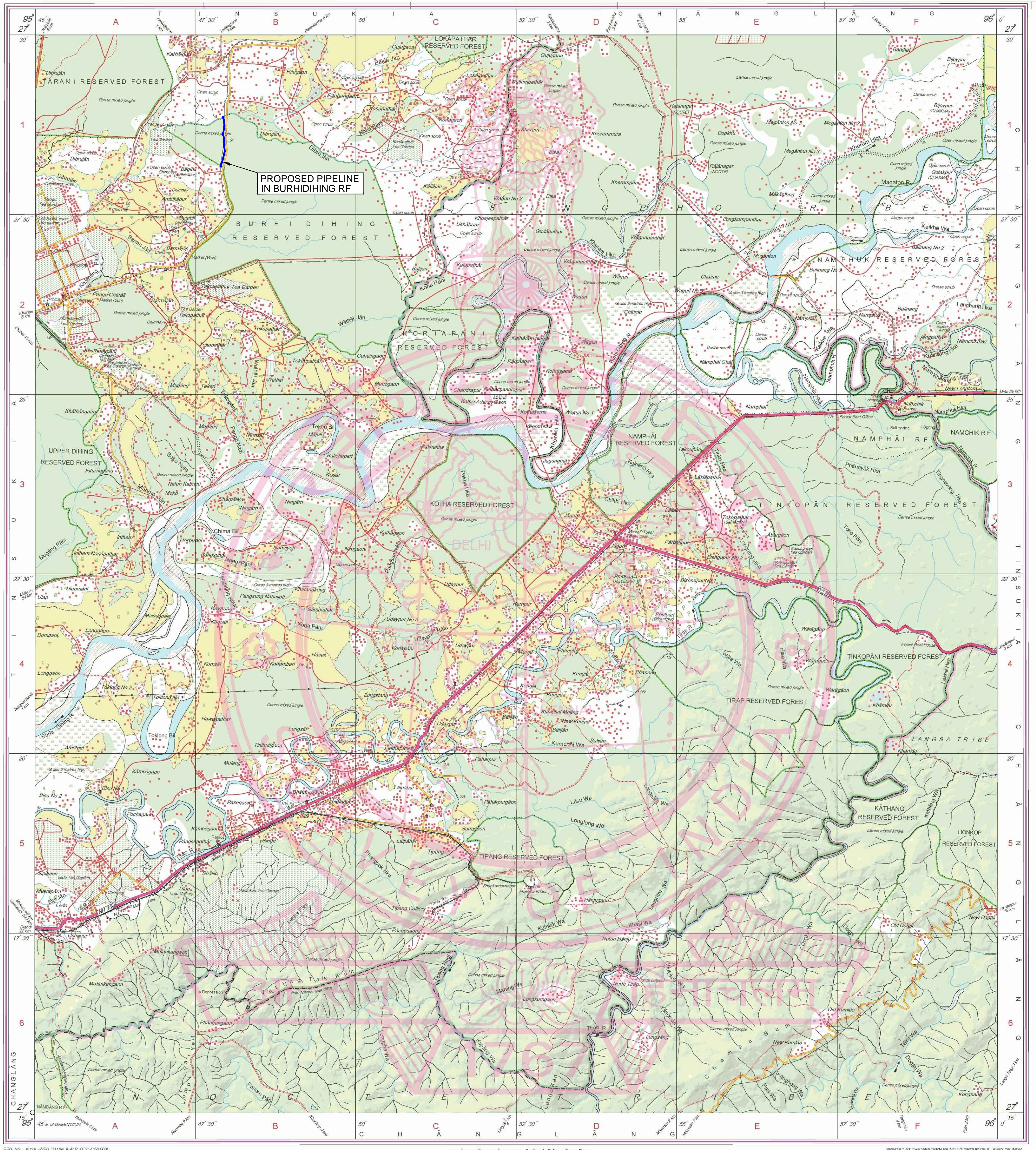
भारत के नक्काशकार, सर्वे सुभा राव, चौधरी के निवेदन में प्रकाशित.
Published under the direction of Swarna Subba Rao, B.E., Surveyor General of India,
Survey of India, Hahibarkela Estate, Post Box No.37, Dibru Gān-248001 (Uttarakhand)
Department of Science & Technology, Government of India.

LEGEND






LENGTH OF PROPOSED PIPELINE IN DUARMARA R.F. 2.947 KM
WIDTH OF PIPELINE CORRIDOR 15 MTS
AREA UNDER DIVERSION OF FOREST 2947.07 X 15 = 44206 SQM
AREA UNDER DIVERSION OF FOREST 2947.07 X 15 = 4.42 HA

LIST OF BOUNDARY PILLARS COORDINATES						LIST OF BOUNDARY PILLARS COORDINATES					
SL NO	LATITUDE	LONGITUDE	SL NO	LATITUDE	LONGITUDE	SL NO	LATITUDE	LONGITUDE	SL NO	LATITUDE	LONGITUDE
L1	27°30'32.19"	95°52'22.03"	L18	27°30'25.43"	95°51'36.88"	R1	27°30'32.72"	95°52'21.01"	R18	27°30'25.92"	95°51'39.79"
L2	27°30'30.79"	95°51'58.44"	L19	27°30'25.40"	95°51'14.55"	R2	27°30'31.27"	95°51'58.31"	R19	27°30'23.88"	95°51'11.48"
L3	27°30'30.74"	95°51'57.45"	L20	27°30'25.63"	95°50'59.44"	R3	27°30'31.23"	95°51'57.53"	R20	27°30'26.10"	95°50'59.62"
L4	27°30'31.90"	95°51'53.82"	L21	27°30'26.83"	95°50'56.44"	R4	27°30'32.36"	95°51'53.99"	R21	27°30'27.30"	95°50'56.58"
L5	27°30'32.34"	95°51'52.16"	L22	27°30'27.15"	95°50'52.81"	R5	27°30'32.83"	95°51'52.21"	R22	27°30'27.63"	95°50'52.98"
L6	27°30'32.23"	95°51'50.76"	L23	27°30'28.63"	95°50'50.00"	R6	27°30'32.71"	95°51'50.66"	R23	27°30'29.10"	95°50'50.19"
L7	27°30'31.22"	95°51'46.62"	L24	27°30'28.87"	95°50'48.08"	R7	27°30'31.67"	95°51'46.40"	R24	27°30'29.36"	95°50'48.10"
L8	27°30'30.50"	95°51'45.37"	L25	27°30'28.52"	95°50'41.59"	R8	27°30'30.87"	95°51'45.02"	R25	27°30'29.00"	95°50'41.50"
L9	27°30'28.33"	95°51'43.12"	L26	27°30'28.10"	95°50'39.65"	R9	27°30'28.71"	95°51'42.77"	R26	27°30'28.54"	95°50'39.39"
L10	27°30'27.08"	95°51'40.94"	L27	27°30'26.44"	95°50'37.58"	R10	27°30'27.46"	95°51'40.60"	R27	27°30'26.84"	95°50'37.26"
L11	27°30'25.68"	95°51'39.28"	L28	27°30'25.59"	95°50'35.81"	R11	27°30'26.17"	95°51'39.07"	R28	27°30'26.06"	95°50'35.63"
L12	27°30'25.87"	95°51'34.34"	L29	27°30'25.08"	95°50'32.61"	R12	27°30'26.36"	95°51'34.25"	R29	27°30'25.55"	95°50'32.47"
L13	27°30'25.00"	95°51'31.95"	L30	27°30'24.14"	95°50'29.64"	R13	27°30'25.46"	95°51'31.80"	R30	27°30'24.58"	95°50'29.41"
L14	27°30'24.07"	95°51'26.61"	L31	27°30'22.78"	95°50'26.87"	R14	27°30'24.55"	95°51'26.48"	R31	27°30'23.22"	95°50'26.63"
L15	27°30'22.51"	95°51'20.35"	L32	27°30'21.16"	95°50'22.54"	R15	27°30'23.00"	95°51'20.29"	R32	27°30'21.59"	95°50'22.40"
L16	27°30'22.66"	95°51'16.41"	L33	27°30'21.08"	95°50'22.03"	R16	27°30'23.14"	95°51'16.39"	R33	27°30'21.56"	95°50'21.98"
L17	27°30'22.22"	95°51'12.16"				R17	27°30'22.72"	95°51'12.24"			



LEGEND

	PROPOSED PIPELINE (15 MT WIDTH)
	PILLAR LOCATION
L-1=	LEFT SIDE BOUNDARY PILLAR NO.
R-1=	RIGHT SIDE BOUNDARY PILLAR NO.
	RESERVED FOREST BOUNDARY

LIST OF BOUNDARY PILLARS CO-ORDINATES					
PILLAR NO.	LATITUDE	LONGITUDE	PILLAR NO.	LATITUDE	LONGITUDE
L1	2° 28' 28" 51.86"	95° 47' 57.55"	R1	2° 28' 28" 51.86"	95° 47' 56.99"
L2	2° 28' 28" 51.35"	95° 47' 57.46"	R2	2° 28' 28" 51.28"	95° 47' 56.89"
L3	2° 28' 28" 49.82"	95° 47' 58.18"	R3	2° 28' 28" 49.67"	95° 47' 57.66"
L4	2° 28' 28" 47.57"	95° 47' 58.80"	R4	2° 28' 28" 47.49"	95° 47' 58.26"
L5	2° 28' 28" 44.58"	95° 47' 59.05"	R5	2° 28' 28" 44.60"	95° 47' 58.50"
L6	2° 28' 28" 38.09"	95° 47' 58.13"	R6	2° 28' 28" 38.09"	95° 47' 57.58"
L7	2° 28' 28" 36.00"	95° 47' 58.38"	R7	2° 28' 28" 35.90"	95° 47' 57.84"
L8	2° 28' 28" 34.09"	95° 47' 59.12"	R8	2° 28' 28" 34.02"	95° 47' 58.57"
L9	2° 28' 28" 29.63"	95° 47' 58.91"	R9	2° 28' 28" 29.59"	95° 47' 58.36"
L10	2° 28' 28" 27.77"	95° 47' 59.42"	R10	2° 28' 28" 27.65"	95° 47' 58.90"
L11	2° 28' 28" 23.19"	95° 48' 0.68"	R11	2° 28' 28" 23.21"	95° 48' 0.14"
L12	2° 28' 28" 14.27"	95° 47' 58.12"	R12	2° 28' 28" 14.42"	95° 47' 57.60"
L13	2° 28' 28" 12.23"	95° 47' 57.24"	R13	2° 28' 28" 12.35"	95° 47' 56.70"
L14	2° 28' 28" 7.97"	95° 47' 56.59"	R14	2° 28' 28" 8.05"	95° 47' 56.04"