

SCHEME FOR COMPENSATORY AFFORESTATION

Detail scheme for Compensatory Afforestation to be carried out in lieu of **13.564 Ha.** of forest area to be diverted for **Construction of New BG Railway Line from New Maynaguri to Jogighopa in Aie Valley Division in Bongaigaon District.**

1. Detail of degraded forest land / non-forest land :-

District: Bongaigaon Name of Division: **Aie Valley Division**

Range: **Abhayapuri, Bhairab Hill P.R.F.** **Compartment : Nil**

Area to be afforested : 30.0 ha **(twice the area proposed to be diverted)**

2. Description of Area

- i. Topography: a. Hill Area
 b. Slope: Hilly and Undulating
- ii. Whether the area is bearing any root stock of vegetation: Degraded Area

3. Technical details

Technical details of Compensatory Afforestation Scheme are as follow:-

(a) Spacing : 2m x 2m

(b) Species :

Trees	Fruits	Medicinal
<i>Tactona grandis, Melia azadirach, Bombax ceiba, Lagerstroemia parviflora, Schima wali chii, Terminalia tomentosa, Gmelina arborea Anthocephalas cadamba, Terminalia tomentosa, Michelia Champaka, Mesua ferea, Erythrina indica.</i>	<i>Artocarpas chaplasa, Eugenia jambolana, Mangifera indica, Amoora wallichii, Artocarpas lakoocha, Ficus spp, Dillenia indica, Eagle marmelos,</i>	<i>Terminalia belerica, Terminalia Chebula, Holorhena antidysentrica, Emblica officinalis, Azadiracta indica</i>

(c) Plantation Method: Planning through Seedlings and Stamp.

4. Plantation Scheme:

Area (ha)	=	15.0 x 2
Spacing (m X m)	=	2.00 x 2.00
Number of Saplings/ ha	=	2,500 nos
Length of Fence (RM)	=	1900
Wage rate for the 1st year (Rs.)	=	179.00
Increase in wage rate for subsequent years by a factor	=	1.1
Appreciation of material costs by a factor	=	1.1

**ESTIMATE FOR CREATION AND MAINTENANCE OF 15 Ha. PLANTATION.
AT BHAIKAB P. R.F.**

Patch No.-1

Area in ha. = 15 ha.
 Spacing = 2.00X 2.00 mts.
 Nos. of Seedling = 2,500nos./ha.
 Length of Fence = 1,900 RM
 Wages Rate for 1st year = Rs. 179.00
 Increase wages rate for subsequent year by a factor = 1:1.
 Appreciation of material cost by a factor = 1:1.

Sl. No.	Particulars of work.	Unit	Qty. Per ha	Total Qty.	Rate per ha.	Amount (Rs)
A.	ERECTION OF FENCING.					
	(a) Cost of full Chain Goat Proof fencing(4 ht with 10 Gauge, 3" dia link) to be fitted on Pre cost RCC pillars at 1.80mt apart including transportation of fencing materials to site for 1900 Rm @ Rs. 800/- per RM as per estimate.	RM.s.		1,900	Rs.800/-	15,20,000.00
	(b) Wages of Dls for carrying, fitting, fixing etc. of fencing materials @ 20Dls per 100 RM.	Dls.	20	380	Rs.179/-	68,020.00
	Sub Total.					15,88,020.00
B.	INFRASTRUCTURE IN PLANTATION AREA.					
	Construction of camp hut.	nos		1	1,50,000	1,50,000.00
	Installation of Ring/Tube well.	nos.		1	50,000	50,000.00
	Irrigation facilities with Diesel generator and hose pipes for watering the nursery and plantation (during dry spells).	nos		1	50,000	50,000.00
	Cost of tools & implements.	nos		1	10,000	10,000.00
	Cost of RCC signboard & Gate including fitting & fixing of the same.	nos.		1	60,000	60,000.00
	Camp accessories @ Rs. 10,000/- per camp.	nos		1	10,000	10,000.00
	Construction of inspection path. 1400 RM @ Rs. 50/- RM.	RM.s		1		70,000.00
	Construction of staff quarter as per estimate.			1	8,00,000	8,00,000.00
	Provision of solar energy for staff quarter including installation.	nos		1	70,000	70,000.00
	Sub Total.					12,70,000.00
C.	ADVANCE WORK.				@ Rs. 179/ DL.	
	Site selection, surveying, demarcation, jungle cutting, burning etc. 20 Dls per Ha.	Dls.	20	300	Rs.179/-	53,700.00
	Preparation and acquisition of polypot sapling in the field nursery for planting 2500 Nos seedling/ha @ Rs.6.00 per polypot.	nos.	2500	37,500	Rs.6 /-	2,25,000.00
	(a) 25% mortality expected during 1 st year (to be planted in the during the 2 nd year) 625 seedling/ha @ Rs.6.5/- per polypot.	nos	625	9,375	Rs.6.5/-	60,938.00
	(b) 20% mortality expected during 2 nd year (to be planted in the during the 2 nd year) 500 seedling/ha @ Rs.7/- per polypot	nos	500	7500	Rs.7/-	52,500.00
	(c) 15% mortality expected during 3 rd year (to be planted in the during the 2 nd year) 375 seedling/ha @ Rs.7.5 /- per polypot	nos.	375	5625	Rs.7.5/-	42,188.00
	(d) 10% mortality expected during 1 st year (to be planted in the during the 4 th year) 250 seedling/ha @ Rs.8/- per polypot	nos.	250	3750	Rs.8/-	30,000.00
	Cost of Bamboo making of staking & Transportation etc.	nos.	625	37500	Rs.1/-	37,500.00
	Line alignment carriage of staking materials and fixing the staking @ 5Dls/ha.	Dls.	5	75	Rs.179/-	13,425.00
	Supervision and Monitoring.	L.S.				10,000.00
	Sub Total.					5,25,251.00

D. CREATION AND 1 ST YEAR MAINTENANCE.		@ Rs. 179/ DL.				
	Soil working, carriage of stamps, polypot seedling at the plantation i.e. Bhairab P.R.F. including dibbling of seeds wherever necessary to be complete with all necessary operation @ 40 Dls/ha.	Dls.	40	600	Rs.179/-	1,07,400.00
	5 weeding, mulching and fire protection works @ 18 Dls/ha.	Dls.	18	1350	Rs.179/-	2,41,650.00
	Maintenance and protection of field nursery and watch and ward for the plantation area @ 1DI for 365 days.	DI.		365	Rs.179/-	65,335.00
	Upkeepment of plantation and making of inspection path, repairing of fence etc. On day to day basic @ 5 Dls/ha.	Dls.	5	75	Rs.179/-	13,425.00
	Maintenance of camp hut, implements, ring/tube well, upkeepment of plantation signboard, documentation, upkeepment of record and other misc. work.	L.S.				10,000.00
	Awareness and Monitoring @ Rs. 800/ha.				Rs.800/-	12,000.00
	Sub Total.					4,49,810.00
E. 2 ND YEAR MAINTENANCE.		@ Rs. 194/ DI.				
	5 weeding, mulching and fire protection works @ 15 Dls/ha./ weeding.	Dls.	225	1125	Rs.194/-	2,18,250.00
	25% Vacancy filling by 2 year old seedling from nursery @ 10Dls/ha.	Dls.	10	150	Rs.194/-	29,100.00
	Upkeepment of plantation and making of inspection path, repairing of fence etc. On day to day basic @ 5 Dls/ha.	Dls.	5	75	Rs.194/-	14,550.00
	Maintenance and protection of field nursery and watch and ward for the plantation area @ 1DI for 365 days.	DI.		365	Rs.194/-	70,810.00
	Maintenance of camp hut, implements,ring/tube well, upkeepment of plantation signboard, documentation, upkeepment of record and other misc. work.	L.S.				11,000.00
	Supervision cost.	L.S.		1		2,500.00
	Contingency L.S.	L.S.				2,500.00
	Sub Total.					3,48,710.00
F. 3 RD YEAR MAINTENANCE.		@ Rs. 211/DI.				
	4 weeding, mulching and fire protection works @ 15 Dls/ha./ weeding.	Dls.	15	900	Rs.211/-	1,89,900.00
	20% Vacancy filling by 2 year old seedling from nursery @ 8 Dls/ha.	Dls.	8	120	Rs.211/-	25,320.00
	Protection work, cattle watching, upkeepment of plantation and making of inspection path, repairing of fence etc. On day to day basic @ 5 Dls/ha.	Dls.	5	75	Rs.211/-	15,825.00
	Maintenance and protection of field nursery and watch and ward for the plantation area @ 1DI for 365 days.	DI.		365	Rs.211/-	77,015.00
	Maintenance of camp hut, implements,ring/tube well, upkeepment of plantation signboard, documentation, upkeepment of record and other misc. work.	L.S.				12,100.00
	Supervision cost.	L.S.		1		12,000.00
	Contingency @ 15% over previous year.	L.S.				2,875.00
	Sub Total.					3,35,035.00
G. 4 TH YEAR MAINTENANCE		@ Rs. 229/DI.				
	4 weeding, mulching and fire protection works @ 15 Dls/ha./ weeding.	Dls.	15	900	Rs.229/-	2,06,100.00
	15% Vacancy filling by 2 year old seedling from nursery @ 6 Dls/ha.	Dls.	6	90	Rs.229/-	20,610.00
	Upkeepment of plantation and making of inspection path, repairing of fence etc. On day to day basic @ 5 Dls/ha.	Dls.	5	75	Rs.229/-	17,175.00

	Maintenance and protection of field nursery and watch and ward for the plantation area @ 1DI for 365 days.	DI.		365	Rs.229/-	83,585.00
	Maintenance of camp hut, implements,ring/tube well, upkeepment of plantation signboard, documentation, upkeepment of record and other misc. work	L.S.				13,310.00
	Supervision cost.	L.S.		1		12,000.00
	Contingency @ 15% over previous year.	L.S.				3,306.00
	Sub Total.					3,56,086.00
H.	5th YEAR MAINTENANCE.				@ Rs. 250/DI.	
	Climber cutting, other silvicultural work and fire protection works @ 8 DIs/ha.	DIs.	8	120	Rs.250/-	30,000.00
	10% Vacancy filling by 2 year old seedling from nursery @ 4 DIs/ha.	DIs.	4	60	Rs.250/-	15,000.00
	Maintenance of fencing post replacement@ 3% initial cost of materials.			0.03	2160000	64,800.00
	Upkeepment of plantation and making of inspection path, repairing of fence etc. On day to day basic @ 4 DIs/ha.	DIs	4	60	Rs.250/-	15,000.00
	Watch and ward for the plantation area @ 1DI for 365 days.	DIs		365	Rs.250/-	91,250.00
	Maintenance of camp hut, implements,ring/tube well, upkeepment of plantation signboard, documentation, upkeepment of records etc.	L.S.				14,641.00
	Supervision cost.	L.S.		1		12,000.00
	Contingency @ 15% over previous year.	L.S.				3,802.00
	Sub Total.					2,46,496.00
I.	6th YEAR MAINTENANCE.				@ Rs. 245/DI.	
	Climber cutting, other silvicultural work and fire protection works @ 15 DIs/ha.	DIs.	15	225	Rs.272/-	61,200.00
	Upkeepment of plantation and making of inspection path, repairing of fence etc. On day to day basic @ 4 DIs/ha.	DIs.	4	60	Rs.272/-	16,320.00
	Watch and ward for the plantation area @ 1DI for 365 days.	DI.		365	Rs.272/-	99,280.00
	Maintenance of amp hut, implements ring/ tube well,upkeepment of plantation signboard, documentation, upkeepment of records etc.	L.S.				16,105.00
	Supervision cost.	L.S.		1		12,000.00
	Contingency @ 15% over previous year.	L.S.				4,373.00
	Sub Total.					2,09,278.00
J	7th YEAR MAINTENANCE				@ Rs. 269/ DL.	
	Climber cutting, other silvicultural work and fire protection works @ 12 DIs/ha.	DIs.	12	180	Rs.269/	53,280.00
	Protection work, cattle watching, ukeepment of plantation and making of inspection path, repairing of fence etc. On day to day basic @ 5 DIs/ha.	DIs.	5	75	Rs.269/	22,200.00
	Maintenance of amp hut, implements ring/ tube well,upkeepment of plantation signboard, documentation, upkeepment of records etc.	L.S.				17,716.00
	Supervision cost.	L.S.		1		12,000.00
	Contingency @ 15% over previous year.	L.S.				5,028.00
	Sub Total.					1,10,224.00
K.	8th YEAR MAINTENANCE				@ Rs. 323/ DL.	
	Climber cutting, other silvicultural work and fire protection works @ 8 DIs/ha.	DIs.	8	120	Rs.323/	38,760.00
	Protection work, cattle watching, ukeepment of plantation and making of inspection path, repairing of fence etc. On day to day basic @ 5 DIs/ha.	DIs.	5	75	Rs.323/	24,225.00
	Maintenance of amp hut, implements ring/ tube well,upkeepment of plantation signboard, documentation, upkeepment of records etc.	L.S.				19,487.00

	Supervision cost.	L.S.		1		12,000.00
	Contingency @ 15% over previous year.	L.S.				5,783.00
	Sub Total.					1,00,255.00
L	9 th YEAR MAINTENANCE				@ Rs. 353/DL.	
	Climber cutting, other silvicultural work and fire protection works @ 7 Dls/ha.	Dls.	7	105	Rs.353/	37,065.00
	Protection work, cattle watching, upkeepment of plantation and making of inspection path, repairing of fence etc. On day to day basic @ 5 Dls/ha.	Dls.	5	75	Rs.353/	26,475.00
	Maintenance of amp hut, implements ring/tube well, upkeepment of plantation signboard, documentation, upkeepment of records etc.	L.S.				21,436.00
	Supervision cost.	L.S.		1		12,000.00
	Contingency @ 15% over previous year.	L.S.				6,650.00
	Sub Total.					1,03,626.00
M	10 th YEAR MAINTENANCE				@ Rs. 385/DL.	
	Climber cutting, other silvicultural work and fire protection works @ 6 Dls/ha.	Dls.	6	90	Rs.385/	34,650.00
	Protection work, cattle watching, upkeepment of plantation and making of inspection path, repairing of fence etc. On day to day basic @ 4 Dls/ha.	Dls.	5	60	Rs.385/	23,100.00
	Maintenance of amp hut, implements ring/tube well, upkeepment of plantation signboard, documentation, upkeepment of records etc.	L.S.				23,579.00
	Supervision cost.	L.S.		1		12,000.00
	Contingency @ 15% over previous year.	L.S.				7,648.00
	Sub Total.					1,00,977.00
						TOTAL Rs. 57,43,768.00
						Added 50% over head Rs. 28,71,884.00
						G. Total Rs. 86,15,652.00

(RUPEES EIGHTY SIX LAKHS FIFTEEN THOUSAND SIX HUNDRED FIFTY TWO) ONLY

Note :-

Cost of escalation of 10% annually has been considered for wages.

The norms should be revised annually based on wages rate and cost of materials.

Precast of RCC pillar with 5"x 5" cross section of 6' height (1.5' below ground section and 4.5' above ground) with readymade concrete base of 1' width for fixing.

As per CAMPA norms vide Addl. P.C.C.F.(CAMPA) office of the P.C.C.F. & HoFF Assam Letter No. FG.27/CAMPA/Site Specific/GPS- Co-Or/ 2013-14 Dt. 08-01-2014.

Technically approved

Conservator of Forests
Lower Assam Social Forestry Circle
Bongaigaon, Assam

Submitted

Divisional Forest Officer,
Aie Valley Division,
Bongaigaon.

**ESTIMATE FOR CREATION AND MAINTENANCE OF 15 Ha. PLANTATION.
AT BHAIKAB P. R.F.**

Patch No. **2.**

Area in ha. = 15 ha.
 Spacing = 2.00X 2.00 mts.
 Nos. of Seedling = 2,500nos./ha.
 Length of Fence = 1,900 RM
 Wages Rate for 1st year = Rs. 179.00
 Increase wages rate for subsequent year by a factor = 1:1.
 Appreciation of material cost by a factor = 1:1.

Sl. No.	Particulars of work.	Unit	Qty. Per ha	Total Qty.	Rate per ha.	Amount (Rs)
A.	ERECTION OF FENCING.					
	(a) Cost of full Chain Goat Proof fencing(4 ht with 10 Gauge, 3" dia link) to be fitted on Pre cost RCC pillars at 1.80mt apart including transportation of fencing materials to site for 1900 Rm @ Rs. 800/- per RM as per estimate.	RMs.		1,900	Rs.800/-	15,20,000.00
	(b) Wages of Dls for carrying, fitting, fixing etc. of fencing materials @ 20Dls per 100 RM.	Dls.	20	380	Rs.179/-	68,020.00
	Sub Total.					15,88,020.00
B.	INFRASTRUCTURE IN PLANTATION AREA.					
	Construction of camp hut.	nos		1	1,50,000	1,50,000.00
	Installation of Ring/Tube well.	nos.		1	50,000	50,000.00
	Irrigation facilities with Diesel generator and hose pipes for watering the nursery and plantation (during dry spells).	nos		1	50,000	50,000.00
	Cost of tools & implements.	nos		1	10,000	10,000.00
	Cost of RCC signboard & Gate including fitting & fixing of the same.	nos.		1	60,000	60,000.00
	Camp accessories @ Rs. 10,000/- per camp.	nos		1	10,000	10,000.00
	Construction of inspection path. 1400 RM @ Rs. 50/- RM.	RMs		1		70,000.00
	Construction of staff quarter as per estimate.			1	8,00,000	8,00,000.00
	Provision of solar energy for staff quarter including installation.	nos		1	70,000	70,000.00
	Sub Total.					12,70,000.00
C.	ADVANCE WORK.				@ Rs. 179/ DL.	
	Site selection, surveying, demarcation, jungle cutting, burning etc. 20 Dls per Ha.	Dls.	20	300	Rs.179/-	53,700.00
	Preparation and acquisition of polypot sapling in the field nursery for planting 2500 Nos seedling/ha @ Rs.6.00 per polypot.	nos.	2500	37,500	Rs.6 /-	2,25,000.00
	(a) 25% mortality expected during 1 st year (to be planted in the during the 2 nd year) 625 seedling/ha @ Rs.6.5/- per polypot.	nos	625	9,375	Rs.6.5/-	60,938.00
	(b) 20% mortality expected during 2 nd year (to be planted in the during the 2 nd year) 500 seedling/ha @ Rs.7/- per polypot	nos	500	7500	Rs.7/-	52,500.00
	(c) 15% mortality expected during 3 rd year (to be planted in the during the 2 nd year) 375 seedling/ha @ Rs.7.5 /- per polypot	nos.	375	5625	Rs.7.5/-	42,188.00
	(d) 10% mortality expected during 1 st year (to be planted in the during the 4 th year) 250 seedling/ha @ Rs.8/- per polypot	nos.	250	3750	Rs.8/-	30,000.00
	Cost of Bamboo making of staking & Transportation etc.	nos.	625	37500	Rs.1/-	37,500.00
	Line alignment carriage of staking materials and fixing the staking @ 5Dls/ha.	Dls.	5	75	Rs.179/-	13,425.00
	Supervision and Monitoring.	L.S.				10,000.00
	Sub Total.					5,25,251.00

D.	CREATION AND 1 ST YEAR MAINTENANCE.					@ Rs. 179/ DL.
	Soil working, carriage of stamps, polypot seedling at the plantation i.e. Bhairab P.R.F. including dibbling of seeds wherever necessary to be complete with all necessary operation @ 40 Dls/ha.	Dls.	40	600	Rs.179/-	1,07,400.00
	5 weeding, mulching and fire protection works @ 18 Dls/ha.	Dls.	18	1350	Rs.179/-	2,41,650.00
	Maintenance and protection of field nursery and watch and ward for the plantation area @ 1DI for 365 days.	DI.		365	Rs.179/-	65,335.00
	Upkeepment of plantation and making of inspection path, repairing of fence etc. On day to day basic @ 5 Dls/ha.	Dls.	5	75	Rs.179/-	13,425.00
	Maintenance of camp hut, implements, ring/tube well, upkeepment of plantation signboard, documentation, upkeepment of record and other misc. work.	L.S.				10,000.00
	Awareness and Monitoring @ Rs. 800/ha.				Rs.800/-	12,000.00
	Sub Total.					4,49,810.00
E.	2 nd YEAR MAINTENANCE.					@ Rs. 194/ DI.
	5 weeding, mulching and fire protection works @ 15 Dls/ha./ weeding.	Dls.	225	1125	Rs.194/-	2,18,250.00
	25% Vacancy filling by 2 year old seedling from nursery @ 10Dls/ha.	Dls.	10	150	Rs.194/-	29,100.00
	Upkeepment of plantation and making of inspection path, repairing of fence etc. On day to day basic @ 5 Dls/ha.	Dls.	5	75	Rs.194/-	14,550.00
	Maintenance and protection of field nursery and watch and ward for the plantation area @ 1DI for 365 days.	DI.		365	Rs.194/-	70,810.00
	Maintenance of camp hut, implements,ring/tube well, upkeepment of plantation signboard, documentation, upkeepment of record and other misc. work.	L.S.				11,000.00
	Supervision cost.	L.S.		1		2,500.00
	Contingency L.S.	L.S.				2,500.00
	Sub Total.					3,48,710.00
F.	3 rd YEAR MAINTENANCE.					@ Rs. 211/DI.
	4 weeding, mulching and fire protection works @ 15 Dls/ha./ weeding.	Dls.	15	900	Rs.211/-	1,89,900.00
	20% Vacancy filling by 2 year old seedling from nursery @ 8 Dls/ha.	Dls.	8	120	Rs.211/-	25,320.00
	Protection work, cattle watching. upkeepment of plantation and making of inspection path, repairing of fence etc. On day to day basic @ 5 Dls/ha.	Dls	5	75	Rs.211/-	15,825.00
	Maintenance and protection of field nursery and watch and ward for the plantation area @ 1DI for 365 days.	DI.		365	Rs.211/-	77,015.00
	Maintenance of camp hut, implements,ring/tube well, upkeepment of plantation signboard, documentation, upkeepment of record and other misc. work.	L.S.				12,100.00
	Supervision cost.	L.S.		1		12,000.00
	Contingency @ 15% over previous year.	L.S.				2,875.00
	Sub Total.					3,35,035.00
G.	4 th YEAR MAINTENANCE					@ Rs. 229/DI.
	4 weeding, mulching and fire protection works @ 15 Dls/ha./ weeding.	Dls.	15	900	Rs.229/-	2,06,100.00
	15% Vacancy filling by 2 year old seedling from nursery @ 6 Dls/ha.	Dls.	6	90	Rs.229/-	20,610.00
	Upkeepment of plantation and making of inspection path, repairing of fence etc. On day to day basic @ 5 Dls/ha.	Dls	5	75	Rs.229/-	17,175.00

	Maintenance and protection of field nursery and watch and ward for the plantation area @ 1DI for 365 days.	DI.		365	Rs.229/-	83,585.00
	Maintenance of camp hut, implements,ring/tube well, upkeepment of plantation signboard, documentation, upkeepment of record and other misc. work	L.S.				13,310.00
	Supervision cost.	L.S.		1		12,000.00
	Contingency @ 15% over previous year.	L.S.				3,306.00
	Sub Total.					3,56,086.00
H.	5th YEAR MAINTENANCE. @ Rs. 250/DI.					
	Climber cutting, other silvicultural work and fire protection works @ 8 Dls/ha.	Dls.	8	120	Rs.250/-	30,000.00
	10% Vacancy filling by 2 year old seedling from nursery @ 4 Dls/ha.	Dls.	4	60	Rs.250/-	15,000.00
	Maintenance of fencing post replacement@ 3% initial cost of materials.			0.03	2160000	64,800.00
	Upkeepment of plantation and making of inspection path, repairing of fence etc. On day to day basic @ 4 Dls/ha.	Dls	4	60	Rs.250/-	15,000.00
	Watch and ward for the plantation area @ 1DI for 365 days.	Dls		365	Rs.250/-	91,250.00
	Maintenance of camp hut, implements,ring/tube well, upkeepment of plantation signboard, documentation, upkeepment of records etc.	L.S.				14,641.00
	Supervision cost.	L.S.		1		12,000.00
	Contingency @ 15% over previous year.	L.S.				3,802.00
	Sub Total.					2,46,496.00
I.	6th YEAR MAINTENANCE. @ Rs. 245/DI.					
	Climber cutting, other silvicultural work and fire protection works @ 15 Dls/ha.	Dls.	15	225	Rs.272/-	61,200.00
	Upkeepment of plantation and making of inspection path, repairing of fence etc. On day to day basic @ 4 Dls/ha.	Dls.	4	60	Rs.272/-	16,320.00
	Watch and ward for the plantation area @ 1DI for 365 days.	DI.		365	Rs.272/-	99,280.00
	Maintenance of amp hut, implements ring/ tube well,upkeepment of plantation signboard, documentation, upkeepment of records etc.	L.S.				16,105.00
	Supervision cost.	L.S.		1		12,000.00
	Contingency @ 15% over previous year.	L.S.				4,373.00
	Sub Total.					2,09,278.00
J	7th YEAR MAINTENANCE @ Rs. 269/ DL.					
	Climber cutting, other silvicultural work and fire protection works @ 12 Dls/ha.	Dls.	12	180	Rs.269/	53,280.00
	Protection work, cattle watching, ukeepment of plantation and making of inspection path, repairing of fence etc. On day to day basic @ 5 Dls/ha.	Dls.	5	75	Rs.269/	22,200.00
	Maintenance of amp hut, implements ring/ tube well,upkeepment of plantation signboard, documentation, upkeepment of records etc.	L.S.				17,716.00
	Supervision cost.	L.S.		1		12,000.00
	Contingency @ 15% over previous year.	L.S.				5,028.00
	Sub Total.					1,10,224.00
K.	8th YEAR MAINTENANCE @ Rs. 323/ DL.					
	Climber cutting, other silvicultural work and fire protection works @ 8 Dls/ha.	Dls.	8	120	Rs.323/	38,760.00
	Protection work, cattle watching, ukeepment of plantation and making of inspection path, repairing of fence etc. On day to day basic @ 5 Dls/ha.	Dls.	5	75	Rs.323/	24,225.00
	Maintenance of amp hut, implements ring/ tube well,upkeepment of plantation signboard, documentation, upkeepment of records etc.	L.S.				19,487.00

	Supervision cost.	L.S.		1		12,000.00
	Contingency @ 15% over previous year.	L.S.				5,783.00
	Sub Total.					1,00,255.00
L.	9th YEAR MAINTENANCE				@ Rs. 353/DL.	
	Climber cutting, other silvicultural work and fire protection works @ 7 Dls/ha.	Dls.	7	105	Rs.353/	37,065.00
	Protection work, cattle watching, upkeepment of plantation and making of inspection path, repairing of fence etc. On day to day basic @ 5 Dls/ha.	Dls.	5	75	Rs.353/	26,475.00
	Maintenance of amp hut, implements ring/ tube well, upkeepment of plantation signboard, documentation, upkeepment of records etc.	L.S.				21,436.00
	Supervision cost.	L.S.		1		12,000.00
	Contingency @ 15% over previous year.	L.S.				6,650.00
	Sub Total.					1,03,626.00
M.	10th YEAR MAINTENANCE				@ Rs. 385/DL.	
	Climber cutting, other silvicultural work and fire protection works @ 6 Dls/ha.	Dls.	6	90	Rs.385/	34,650.00
	Protection work, cattle watching, upkeepment of plantation and making of inspection path, repairing of fence etc. On day to day basic @ 4 Dls/ha.	Dls.	5	60	Rs.385/	23,100.00
	Maintenance of amp hut, implements ring/ tube well, upkeepment of plantation signboard, documentation, upkeepment of records etc.	L.S.				23,579.00
	Supervision cost.	L.S.		1		12,000.00
	Contingency @ 15% over previous year.	L.S.				7,648.00
	Sub Total.					1,00,977.00
						TOTAL Rs. 57,43,768.00
						Added 50% over head Rs. 28,71,884.00
						G. Total Rs. 86,15,652.00

(RUPEES EIGHTY SIX LAKHS FIFTEEN THOUSAND SIX HUNDRED FIFTY TWO) ONLY

Note. :-

Cost of escalation of 10% annually has been considered for wages.

The norms should be revised annually based on wages rate and cost of materials.

Precast of RCC pillar with 5"x 5" cross section of 6' height (1.5' below ground section and 4.5' above ground) with readymade concrete base of 1' width for fixing.

As per CAMPA norms vide Addl. P.C.C.F.(CAMPA) office of the P.C.C.F. & HoFF
Assam Letter No. FG.27/CAMPA/Site Specific/GPS- Co-Or/ 2013-14 Dt. 08-01-2014.

ABSTRACT OF C.A SITE PLANTATION AREA AND EXPENDITURE

PATCH NO.1 = 15 Ha. = Rs. 86,15,652.00

PATCH NO.2 = 15 Ha. = Rs. 86,15,652.00

2 PATCHES = 30 Ha. = Rs.1,72,31,304.00

Say Rs.1,72,31,304.00

(RUPEES ONE CRORE SEVENTY TWO LAKHS THIRTY ONE THOUSAND THREE HUNDRED) ONLY

Technically Approved

Conservator of Forests
Lower Assam Social Forestry Circle,
Bongaigaon
Conservator of Forests
Lower Assam Social Forestry Circle
Bongaigaon, Assam

Submitted

Divisional Forest Officer
Aie Valley Division, Bongaigaon

SKETCH MAP OF PROPOSED 15 Ha. COMPENSATORY AFFORESTATION
PLANTATION IN BHAIRAB HILL P.R.F. (PATCH NO.1)

SCALE :-1 CM= 40 M. PERIMETER=1900.0 R.M.

N=26°:21':26.57"

E=090°:32':1.32'

200.0 M.

N=26°:21':21.21'

E=090°:32':5.61'

750.0 M.

750.0 M.

N=26°:21':8.19'

E=090°:31':43.44'

200.0 M.

N=26°:21':2.73'

E=090°:31':47.71'

Submitted

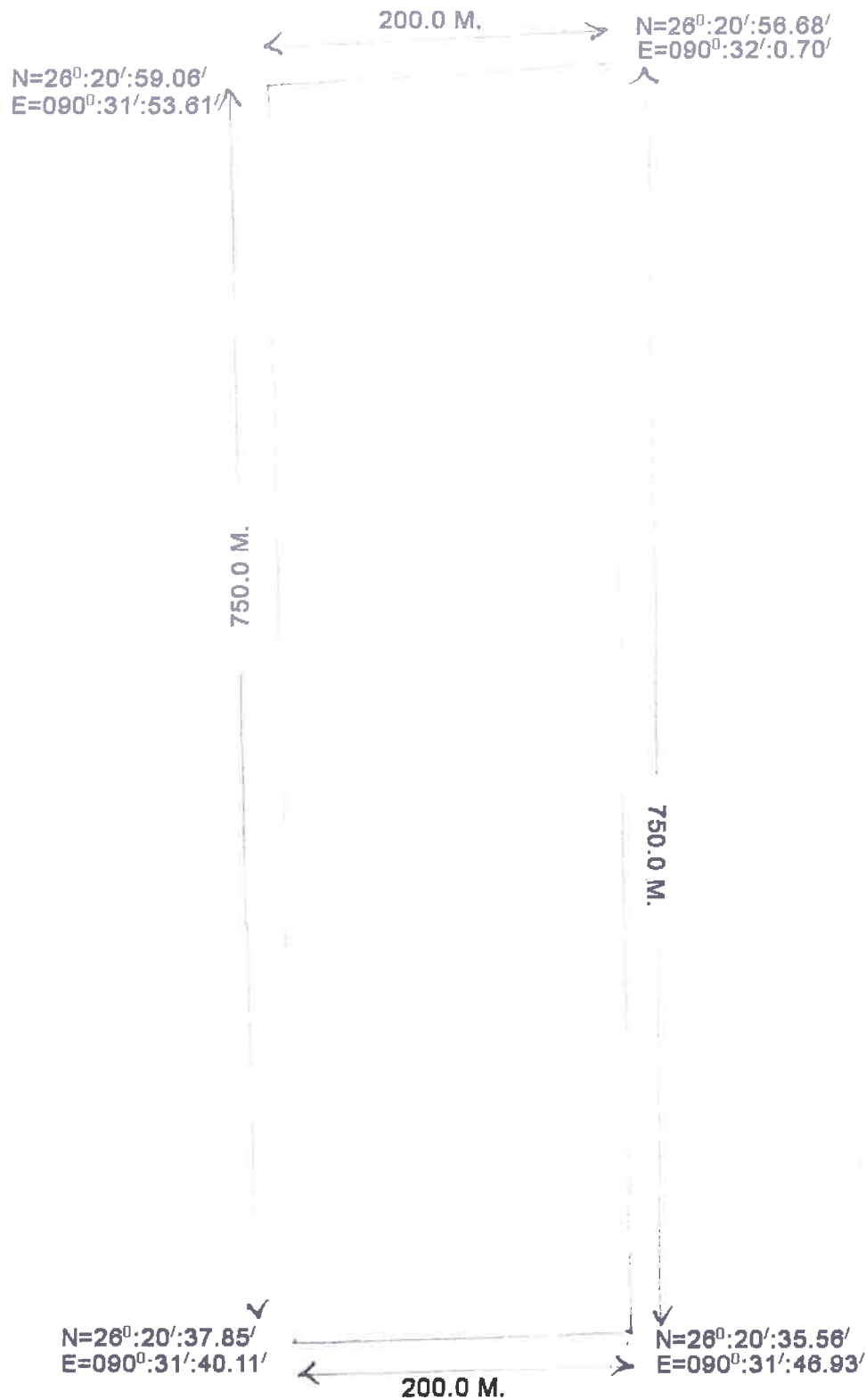
Divisional Forest Officer
Aie valley Division
Bongalgaon

[Signature]

Bongalgaon

SKETCH MAP OF PROPOSED 15 Ha. COMPENSATORY AFFORESTATION
PLANTATION IN BHAIKAB HILL P.R.F. (PATCH NO.2)

SCALE :-1 CM= 40 M. PERIMETER=1900.0 R.M.



Submitted

[Signature]
Divisional Forest Officer
Aie Valley Division, Bongaigaon
Divisional Forest Officer
Aie valley Division
Bongaigaon