

TOPO MAP SHOWING THE NON-FOREST GOVT. LAND IDENTIFIED FOR COMPENSATORY AFFORESTATION OVER 91.00 HA. IN VILLAGE UPARBIRIKALA, UNDER BANSPAL TAHASIL OF KEONJHAR DISTRICT, ODISHA PROPOSED TO BE ALLOTTED FOR LASERDA PACHERI IRON & MANGANESE BLOCK OF M/s THRIVENI EARTHMOVERS PVT. LTD.

Ref. Topo Sheet No - F45N6 (73 G/6)

SCALE - 1:50,000



No. F45N6

Scale 1:50,000

F45N1 (73G/1) Sundergarh ORISSA	F45N5 (73G/5)	F45N9 (73G/9)
F45N2 (73G/2) Deogarh ORISSA	F45N6 (73G/6) Kendujhar ORISSA	F45N10 (73G/10)
F45N3 (73G/3) Anupal ORISSA	F45N7 (73G/7)	F45N11 (73G/11)

1 Mayurbhanj, ORISSA.

भारतीय सर्वेक्षण विभाग

SURVEY OF INDIA

1st Edition 2009.

Price : Rs. 50 / -

CONVENTIONAL SYMBOLS

Express highway with toll, with bridge with distance stone	20
Roads, metalled according to importance	10
Roads, double carriageway according to importance	10
Unmetalled road, Cart-track, Foot-path and open	5
Stony, with track in bed, underfoot, open	5
Dams, masonry or rock-filled, earthenwork, weir	5
River, dry with water channel, with island & rocks, tidal river	5
Submerged rocks, Shoal, Swamp, Reeds	5
Wells, lined, unfired, tube-well, Spring, Tanks, perennial, dry	5
Embankments, road or rail, bank, broken ground	5
Railways, broad gauge, double, single with station, under construction	5
Railways, other gauges, double, single with station, under construction	5
Mine, line or quarry, Kiln, Cutting with tunnel	5
Contours with sub-features, Rocky slopes, City	5
Sand features, Tidal, Dune, Hills, Limestone, (Shaded) Saltpetre	5
Towns or Villages, inhabited, deserted, Fort	5
Habit, permanent, temporary, Tower, Antiquities	5
Temple, Chhatra, Church, Mosque, Light, Tomb, Graves	5
Lighthouse, Lightship, Buoy, Light, Lighted, Anchorage	5
Mine, Vine on walls, Grass, Scar	5
Palm, palmery, other Plantain, Coffee, Bamboo, Other trees	5
Areas: cultivated, wooded, Surveyed tree	5
Boundary, international	5
state, demarcated, undemarcated	5
district, subdivision, taluk or block, forest	5
Boundary pillars, surveyed, uncoloured	5
Heights, triangulated, station, point, approximate	5
Height, marked, geodetic, tertiary, canal	5
Post office, Telegraph office, Overhead tank	5
Rail house or inspection building, Control house, Police station	5
Camping ground, Forest, reserved, protected	5
Sword, names, administrative, locality or other	5
Hospital, Dispensary, Veterinary, Hospital / Dispensary	5
Aerodrome, Helipad, Tourist site	5
Power line, with pylons surveyed with poles unsurveyed	5

Legend

Identified Area

REFERENCE

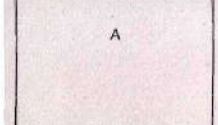
NF 6 National Highway No. 6.

NOTES :-

Heights are in metres and above Indian mean sea level.
Contours are approximate.
A relative height, h_r , represents the approximate height, in metres, between the top and bottom of a steep slope.
The triangulated heights and contours, in this sheet, have not been adjusted to the heights of the spirit-levelled bench-marks, and may not be strictly in accordance with them.
Unmetalled roads, in this sheet, are generally motorable in dry season.
Important buildings are shown in black.
Hand Pump is shown thus.

COMPILATION INDEX

A. Compiled from 1:25,000 survey 1978-79. Updated for major details during 2005-06.



Projection - UTM Datum - WGS 84

Magnetic Variation from True North about $\frac{1}{2}$ West in 2005.
(Annual change negligible).

1:50,000

500 m to 1 cm 2 cm to 1 km

CONTOUR INTERVAL 20 METRES

For further details about this map, please contact

Director

Orissa Geo-Spatial Data Centre

Survey of India

Survey Bhawan, PO - R R Laboratory

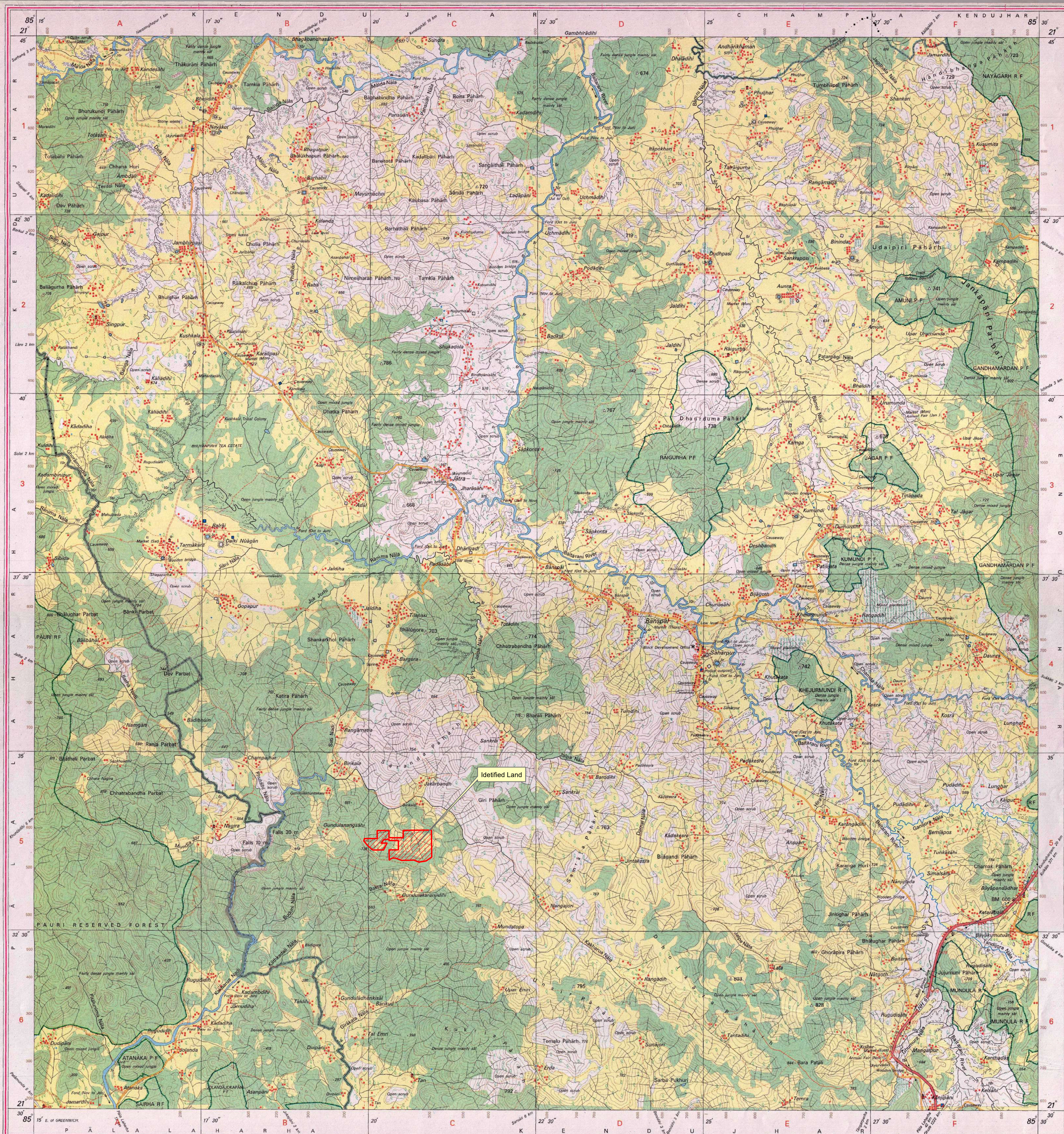
Bhubaneswar 751013.

Fax : 0674 - 2301418

WEBSITE - www.surveyofindia.gov.in

Reproduction in whole or part by any means is prohibited without the written permission of Survey of India, the National Mapping Agency.

GOVERNMENT OF INDIA COPYRIGHT, 2009.



REG. No. 8416-SPG D/09 (Orissa GDC-150,000-1015).

भारत के मानचित्र के प्रसारण में शामिल.
Published under the direction of Surveyor General of India,
Survey of India, Hathibarkala Estate, Post Box No. 37, Dehra Dun-248001 (Uttarakhand),
Department of Science & Technology, Government of India.

COUNTERSIGNED

Divisional Forest Officer
Keonjhar Division

For M/s. THRIVENI EARTHMOVERS PVT. LTD.

S. Venkateswaram
Director (Operations)