

जनपद पीलीभीत में पीलीभीत-बरती मार्ग के कि०मी० 6 से लिपुलेक भिण्ड मार्ग के कि०मी० 372 तक पीलीभीत बाईपास निर्माण में पीलीभीत-मैलानी रेल खण्ड के चौनेज 258/11 एवं 258/12 के मध्य दो रेल उपरिगामी सेतु के कार्य हेतु प्रस्तावित क्षतिपूरक वृक्षारोपण संरक्षित क्षेत्र पीलीभीत-टनकपुर रेल मार्ग कि०मी० 7/3 से 7/4 के मध्य दांयी पटरी पर (क्षेत्रफल - 0.2024 हेक्टेयर)



OPEN SERIES MAP

No. H44T14

Scale 1:50,000

H44T9 (53P/9)	H44T13 (53P/13)	H44U1 (62D/1)
H44T10 (53P/10)	Pilibhit UTTAR PRADESH H44T14 (53P/14)	H44U2 (62D/2)
H44T11 (53P/11)	H44T15 (53P/15)	H44U3 (62D/3)

1. Udhm Singh Nagar, UTTARAKHAND.
2. Bareilly, UTTAR PRADESH.

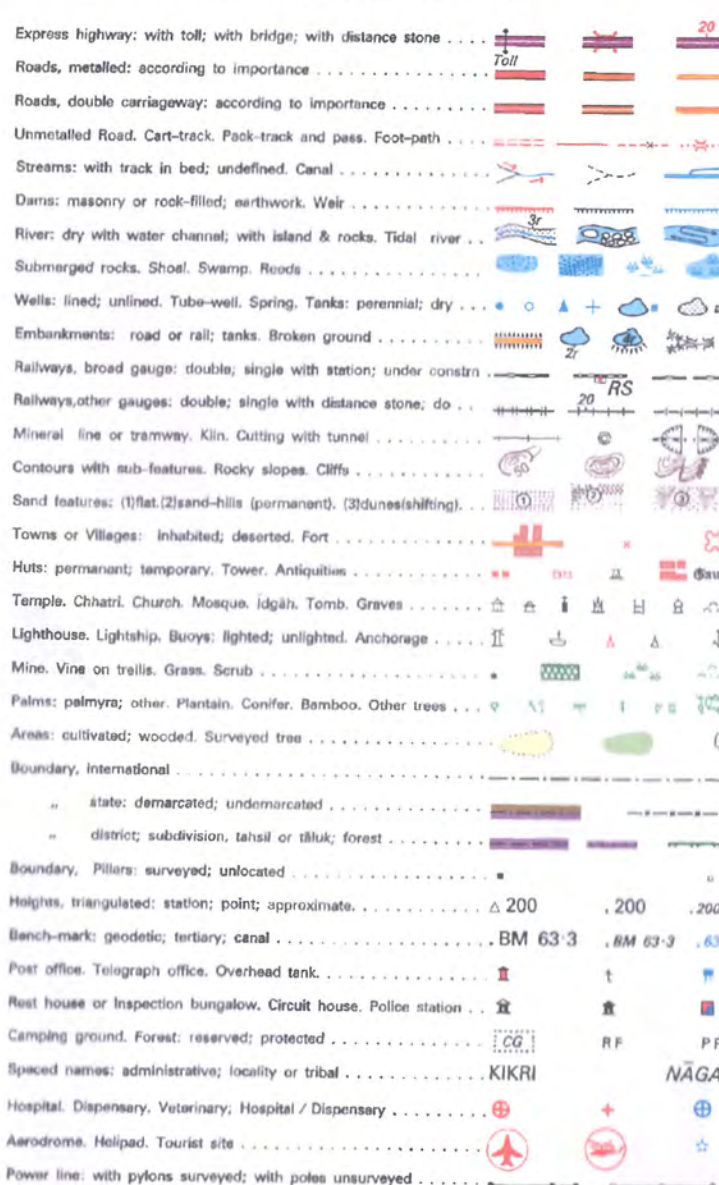
भारतीय सर्वेक्षण विभाग

SURVEY OF INDIA

1st Edition 2010.

Price: ₹ 70/-

CONVENTIONAL SYMBOLS



Legend

Proposed CA Land

REFERENCE

NH 74 National Highway No. 74, NH 125 National Highway No. 125, SH 26 State Highway No. 26, SH 20 State Highway No. 20.

NOTES :-

Heights and contours have not been shown. A relative height, - av, represents the approximate height, in metres, between the top and bottom of a steep slope. The kilometre scale numbers along the railway, roads and canals shown in slant type, e.g., 3, whereas kilometre numbers along canals are shown in upright type, e.g., 5. Unsettled roads and canals are shown in slant type, e.g., 5. In this sheet are generally mentioned in dry season. Permission to use these along canals and the Reserved Forest area is required from Irrigation and Forest authorities respectively. Wells & tube wells are numerous throughout the sheet, only the important ones have been shown. Tanks, shown dry in this area, usually contain water from July to April. A relative height, e.g., 10, marked along a canal, indicates the height of the top of the canal embankment above the adjacent country. Administrative names and boundaries in this sheet have been shown as per present political set-up after formation of Uttar Pradesh state.

COMPILATION INDEX

A Surveyed during 1987-88. Compiled from 1:25,000 scale. Updated for major details during 2005-06.

Projection - UTM Datum - WGS 84

Magnetic Variation from True North about 1/2° East in 2005. (Increasing by about 1° annually).

1:50,000

500 m to 1 cm 2 cm to 1 km

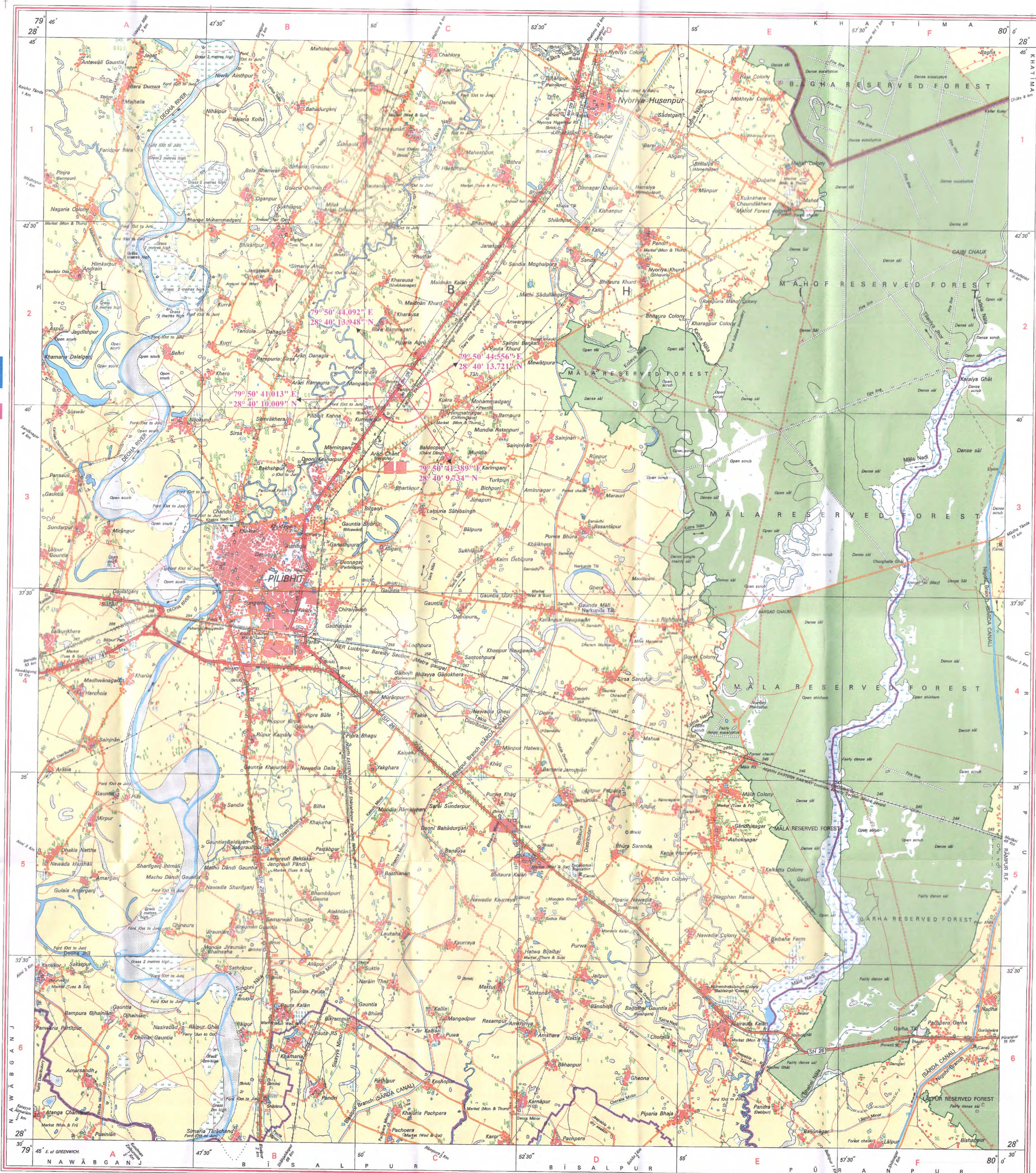
For further details about this map, please contact

Director
Uttarakhand & West Uttar Pradesh Geo-Spatial Data Centre
Survey of India, 17 E.C. Road, Karanpur
Dehra Dun.

WEBSITE - www.surveyofindia.gov.in

Reproduction in whole or part by any means is prohibited without the written permission of Survey of India, the National Mapping Agency.

GOVERNMENT OF INDIA COPYRIGHT, 2010.



REG. No. - WPG D to (Uttarakhand & West UPRD-1:50,000)

भारत के महानिदेशक स्वर्ण सुभाष राव, बी०ई०, के निदेशक ने प्रकाशित,
Published under the direction of Swarna Subba Rao, B.E., Surveyor General of India,
Survey of India, Hathiarkala Estate, Post Box No. 37, Dehra Dun - 248001 (Uttarakhand)
Department of Science & Technology, Government of India.

PRINTED AT THE WESTERN PRINTING GROUP OF SURVEY OF INDIA.

प्रभागीय निदेशक
सामाजिक चारित्रिक प्रभाग
पीलीभीत