

### Map Showing Proposed 62.2 Ha. Compensatory Afforestation (C.A) Land

ANANTAPUR DISTRICT.  
KOLĀR DISTRICT.

Surveyed 1962-63.  
(Also see foot-note).

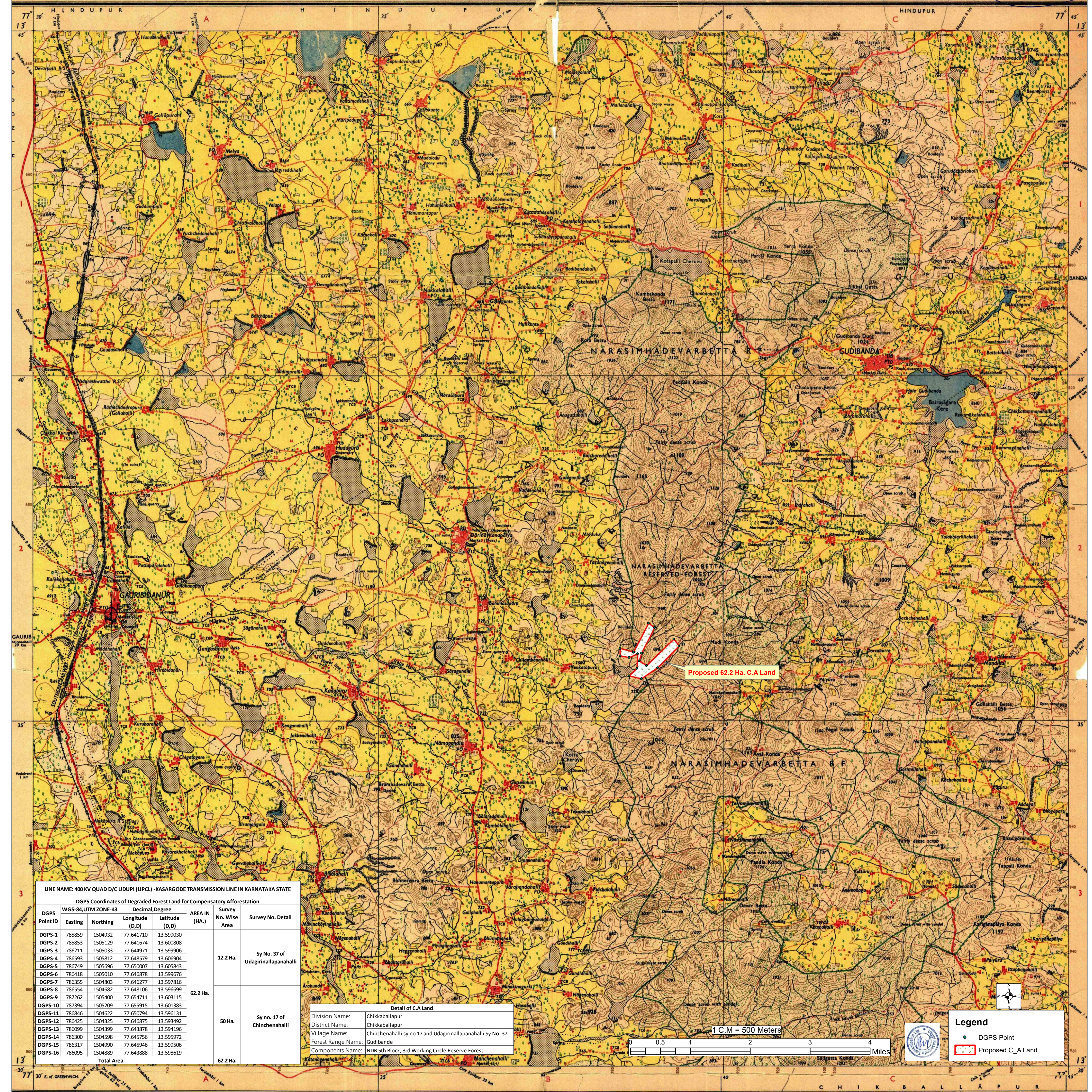
ANDHRA PRADESH  
MYSORE

FIRST EDITION

Magnetic Variation from True North about  $2\frac{1}{2}^{\circ}$  West in 1965.  
(Increasing by about  $2'$  annually).

REFER TO THIS MAP AS :- 1:50,000  
SHEET 57 G/10 FIRST EDITION

No. 57  $\frac{G}{10}$



Co. No. 9926 HD'68 (D.O.4-1:33,333)-5612'73-2706 '84.

• **metalled:** according to importance distance stone  
 • **unmetalled do:** do: bridge  
 • **ar-track:** Pack-track and pass. Foot-path with bridge.  
 • **highways with para vituins:** Causeway. Ford or Ferry  
 • **streams:** with rock to lead water  
 • **small meadow or mud-filled channel:** Weir  
 • **river banks:** shallow, 3 to 6 metres over: 6 metres  
 • **with water channel:** with island or rocks. Tidal river  
 • **shaded rocks:** Shoal. Swamp. Reeds  
 • **with forest:** with tall trees. Spring. Trench: perennial dry  
 • **shallowly run:** ford or rail track  
 • **bank:** bank  
 • **road:** broad, rough: double track with station under canopy  
 • **other gauges:** do: do: with distance stone  
 • **linear lineal railway:** Telegraph line. Cutting with tunnel  
 • **contours with sea-lizards:** Rocky slopes. Cliffs  
 • **and features (left):** Broad hills and dense forest. Shifting dunes

Edition 1968.  
Previous Editions on 1-inch scale: 1st 1927; 2nd (1945).  
Printed 1984.

REFER TO THIS MAP AS :- 1:50,000  
SHEET 57 G/10 FIRST EDITION

N DIA

## Index to Sheets

$57\frac{G}{5}$	$57\frac{G}{9}$	$57\frac{G}{13}$
$57\frac{G}{6}$	$57\frac{G}{10}$	$57\frac{G}{14}$
$57\frac{G}{7}$	$57\frac{G}{11}$	$57\frac{G}{15}$

Published under the direction of Brigadier J. S. Paintal, M.I.S., M.I.E., Surveyor General of India.  
1968.

1:50,000

Water features are shown in blue where they generally contain water.

Cultivated areas are coloured yellow.

The exterior boundaries of areas of Reserved or Protected Forests are shown by green ribands.

Contours are approximate

A relative height,  $\delta r$ , represents the approximate height, in metres, between the top and bottom of a steep slope.

Wooded areas are coloured green. Scattered trees and other vegetation are in green, but prominent surveyed trees are in black.

This sheet has been compiled from 1:25,000 surveys.

The kilometre stone numbers along the railway and roads are shown in slant type, e.g., '5' whereas milestone numbers are shown in upright type, e.g., '5'.

The Gauribidanūr-Gudibanda taluk boundary has been entered as a result of verification survey carried out during 1966.

## REFERENCES

G Gudibanda Taluk.

TCB Tobacco curing barn

Administrative Index

KOLAR  
MYSORE

PRINTED AT THE 104 (H.B.D.) PRINTING GROUP OF SURVEY OF INDIA

Towns or Villages; inhabited desert fort.				
Hue; permanent settlement; Tower; Antiquities.				
Temple, Chhatrai, Church, Mosque, Igloo, Tomb, Graves.				
Lighthouse, Lighthouses, Buoy, Isolated Anchorage.				
Lighthouse, Light house, Beacon, Buoys.				
Palmes palm trees, Plantations, Cactus, Bamboo, Other trees.				
Boundary international.				
State demarcated, undemarcated.				
District; subdiv. tahsil or taluk; forest.				
Boundary pillars, deserted village, village trjunction.				
Height; elevation; spot height; approximate.				
Bench-mark, geodesic surveying station.				
Post office, telephone office, combined office. Police station, P.O.				
Bungalows, dhab or travellers' inn, rest-house.				
Circuit house, camping ground, forest, reserved protected.				
Spaced names: administrative, locality or tribe.	KIKRI	NAGA		

© GOVERNMENT OF INDIA COPYRIGHT, 1968.

Price: Five Rupees.