

निर्यात के लिए नहीं NOT FOR EXPORT

## OPEN SERIES MAP

No. C43R2

Scale 1:50,000

41

C43Q13  
(58C/13)

C43R1  
(58G/1)  
Idukki  
KERALA

C43R5  
(58G/5)  
Teni  
TAMIL NADU

C43Q14  
(58C/14)  
Kottayam  
KERALA

C43R2  
(58G/2)

C43R6  
(58G/6)

C43Q15  
(58C/15)

C43R3  
(58G/3)  
Pattanamittu  
KERALA

C43R7  
(58G/7)  
Tirunelveli  
TAMIL NADU

2

3

1 Ernākulam, KERALA.  
2 Madurai, TAMIL NĀDU.  
3 Virudhunagar, TAMIL NĀDU.

भारतीय सर्वेक्षण विभाग

SURVEY OF INDIA

1st Edition 2010.

Price: Rs. 103/-

### CONVENTIONAL SYMBOLS

Rivers, highway; with toll; with bridge; with distance stone  
 Roads, metalled; according to importance  
 Roads, double carriageway; according to importance  
 Unmetalled road. Cart-track. Pack-track with pass. Foot-path  
 Streams; with track in bed; unconfined Canal  
 Dams, masonry or rock-filled; earthen/Weir  
 River with water channel; with island & rocks, Tide-river  
 Submerged rocks. Shal. Swamp. Reeds  
 Wells: lined, unlined. Tube-well. Spring. Tanks; perennial; dry  
 Embankments: road or rail; tank. Broken ground  
 Railways, broad gauge; double; single with station; under construction  
 Railways, other gauges; double; single with distance stone; do.  
 Mineral line or tramway. Kili. Cutting with tunnel  
 Contours with sub-features. Rocky slopes. Cliffs  
 Sand features (1 ft. flat, 2 ft. sand hills) (permanent) (shifting)  
 Towns of villages: inhabited; deserted. Fort  
 Huts; permanent; temporary. Tower. Antiquities  
 Temple. Chhatra. Church. Mosque. Igloo. Tomb. Graves  
 Lighthouses. Lighthouse. Buoys; lighted; unlighted. Anchorage  
 Mine. Vine on trellis. Grass. Plant  
 Palms; palm-tree; other. Scrub. Canebrake. Bamboo. Other trees  
 Areas: cultivated; wooded. Surveyed tree  
 Boundary, international  
     state; demarcated; undemarcated  
     district; subdivision; taluk or taluk; forest  
 Heights, points surveyed; unlocated  
 Heights, triangulated; station; point; approximate  
 Bench mark: geodetic; tertiary; canal  
 Post office. Telegraph office. Overhead tank  
 Rest house or Inspection bungalow. Circuit house. Police station  
 Camping house. Forest: reserved; protected  
 Spaced names: administrative; locality or dispensary  
 Hospital. Dispensary. Veterinary Hospital / Dispensary  
 Airdrome. Fieldpost. Tourist site  
 Power line: with pylons surveyed; with poles unsurveyed

## REF

### REFERENCES

*NH 220* National Highway No. 220. *PWD* Public Works Department.  
*KTDC* Kerala Tourism Development Corporation.

NOTES :-

Heights are in metres as above Indian mean sea level.  
Contours are approximate.  
A relative height, e.g., &R; represents the approximate height, in metres, between the top and bottom of a steep slope.  
Tube-wells are numerous throughout the sheet, only the important ones have been shown.  
Unmetalled roads and cart-tracks in this sheet are generally motorable in dry season. Permission to use those along canals is required from irrigation authorities.  
Important buildings are shown in black with names.  
Christian memorials are shown thus.....†

## COMPILATION INDEX

A. Surveyed during 1975-77. Updated for major details during 2005-06

Projection - UTM      Datum - WGS 84

Magnetic Variation from True North about  $2\frac{1}{4}^{\circ}$  East in 2005.  
(Decreasing by about  $1'$  annually).

1:50 000

0 0 1 2 3 Kilometres

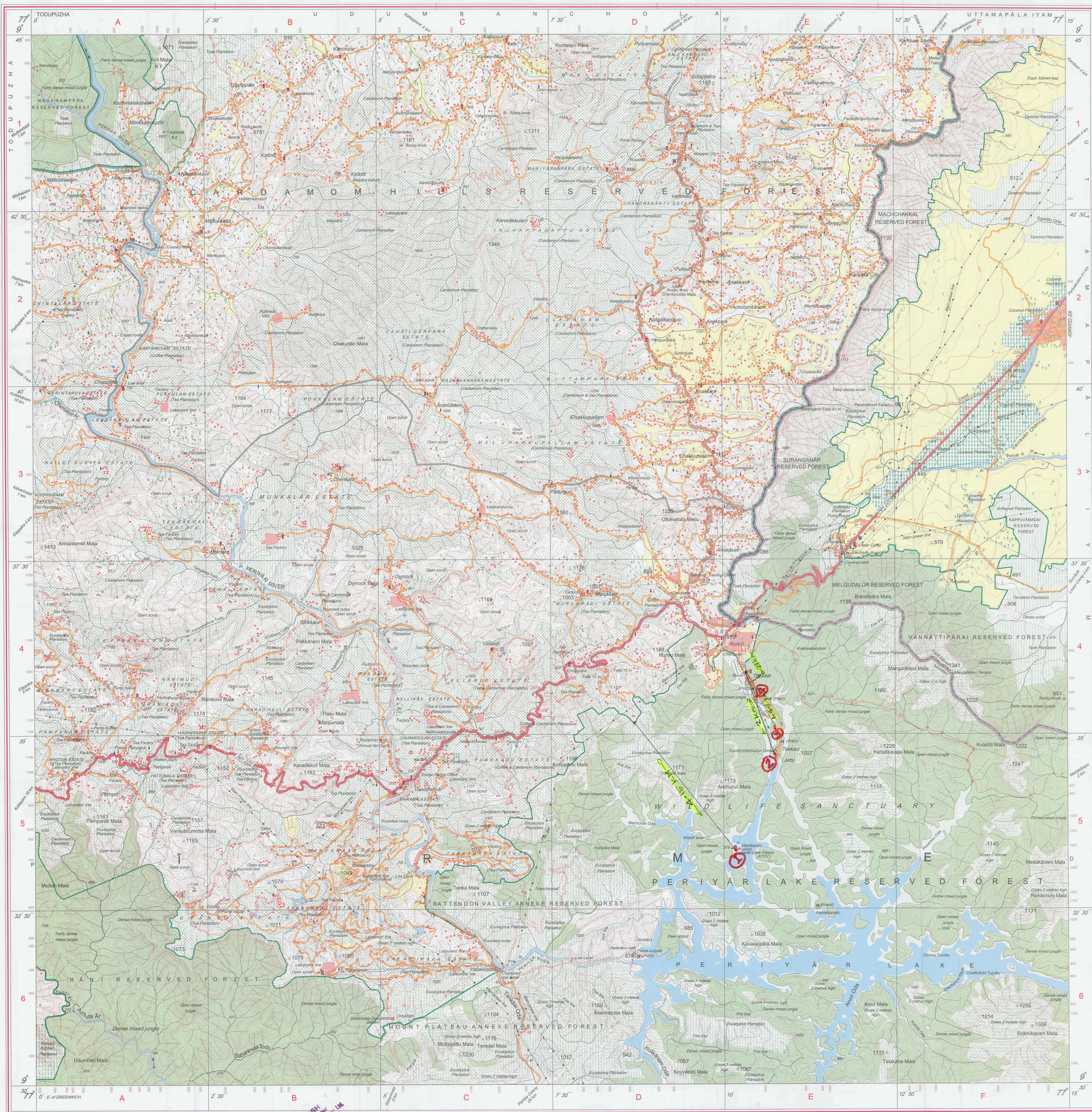
CONTOUR INTERVAL 20 METRES

For further details about this map, please contact  
Director  
Kerala and Lakshadweep Geo-Spatial Data Centre  
Survey of India, CGO Complex  
Poonkulam, Vellayani P.O.  
Thiruvananthapuram.

WEBSITE - [www.surveyofindia.gov.in](http://www.surveyofindia.gov.in)

*Reproduction in whole or part by any means is prohibited without the written permission of Survey of India, the National Mapping Agency.*

GOVERNMENT OF INDIA COPYRIGHT, 2010.



REG. No. 9404-SPG D '10 (Kerala & Lakshadweep GDC-I:50,000)-1015 '15

भारत के महसर्वेक्षक डॉ. स्वर्ण सुब्बा राव, के निदेशन में प्रकाशित,  
under the direction of Dr. Swarna Subba Rao, Surveyor General of India,  
Häthibarkala Estate, Post Box No. 37, Dehra Dün - 248001 (Uttarākhänd),  
Department of Science & Technology, Government of India.

① LAKE PALACE

### ③ PERIYAR HOUSE

2 ARANYA NIVAS

④ ANAKOODU-QUARTERS

PRINTED AT THE SOUTHERN PRINTING GROUP OF SURVEY OF INDIA