

FIRST EDITION

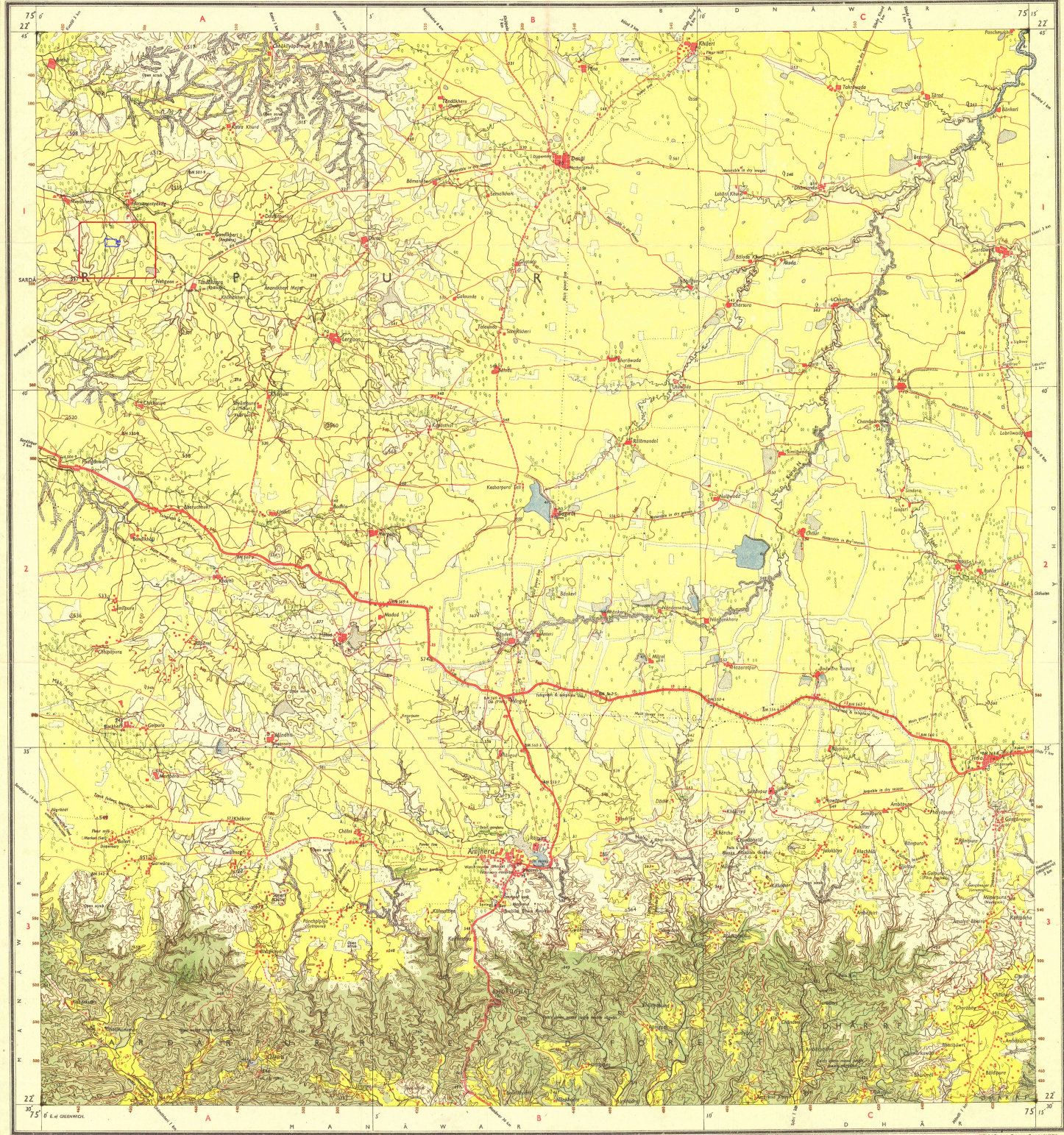
# MADHYA PRADESH

No. 46 N/2

Magnetic Variation from True North about 1° West in 1970  
(Changing by about 1' annually)

DHAR DISTRICT

Surveyed 1967-68.



Phos. marked according to importance: distance shown in ...

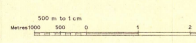
unmarked	as	bridge
...	...	...

Phos. marked according to importance: distance shown in ...

unmarked	as	bridge
...	...	...

Index to Sheets

46 N/1	46 N/2	46 N/3
46 N/4	46 N/5	46 N/6
46 N/7	46 N/8	46 N/9



1:50,000

## HEIGHTS & CONTOURS IN METRES

Contours are approximate  
A relative height, the represents the  
approximate height, in metres, between the  
top and bottom of a slope shown.  
Wooded areas are shown green. Scattered  
trees and other vegetation are in green. Bare  
ground, cultivated areas, etc. are in black.

Administrative Index

DHAR
------

Phos. marked according to importance: distance shown in ...

unmarked	as	bridge
...	...	...