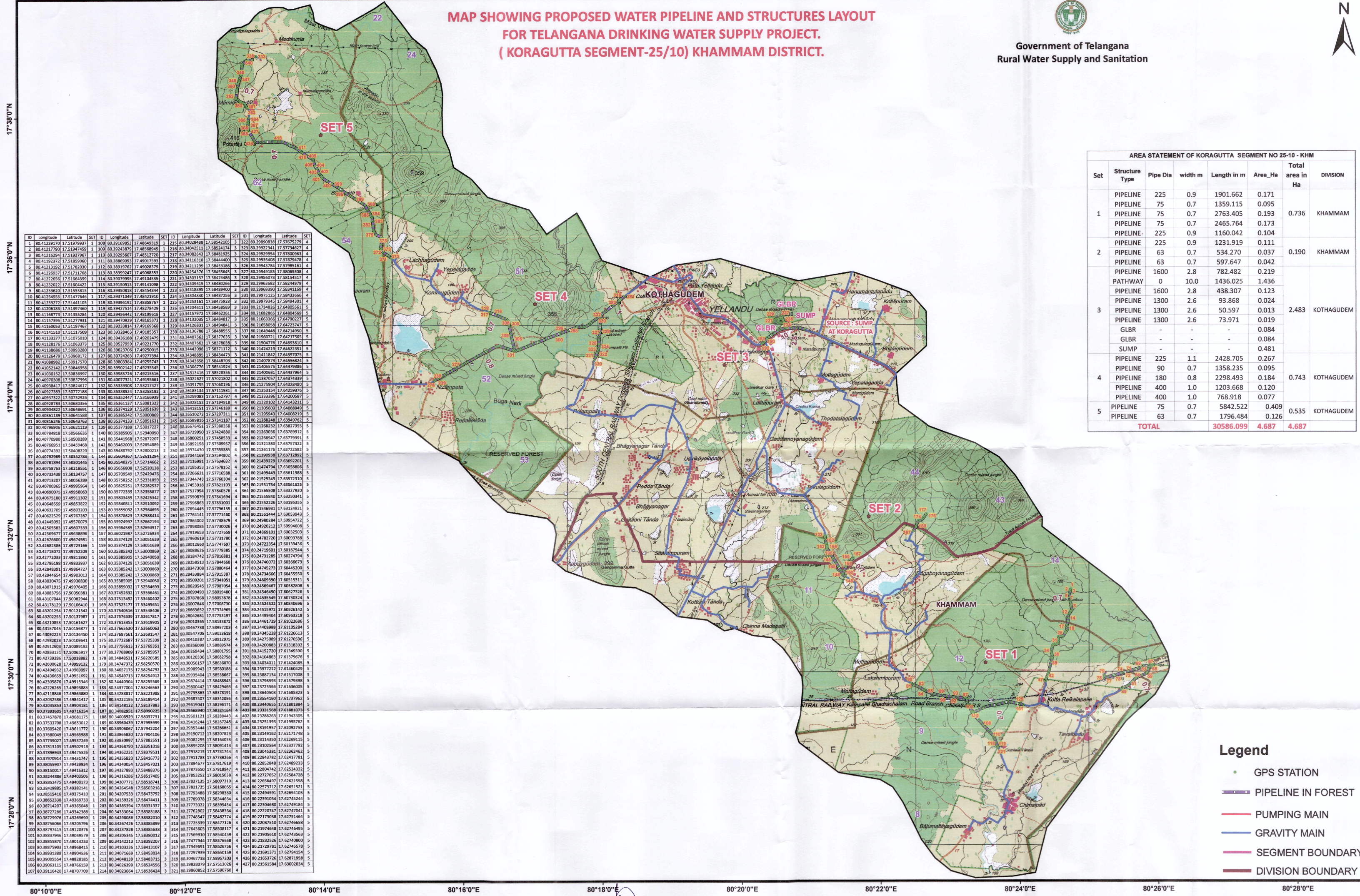


80°10'0"E 80°12'0"E 80°14'0"E 80°16'0"E 80°18'0"E 80°20'0"E 80°22'0"E 80°24'0"E 80°26'0"E 80°28'0"E

**MAP SHOWING PROPOSED WATER PIPELINE AND STRUCTURES LAYOUT  
FOR TELANGANA DRINKING WATER SUPPLY PROJECT.  
( KORAGUTTA SEGMENT-25/10) KHAMMAM DISTRICT.**



Government of Telangana  
Rural Water Supply and Sanitation



ID	Longitude	Latitude	SET ID	Longitude	Latitude	SET ID	Longitude	Latitude	SET ID	Longitude	Latitude	SET ID
1	80.4123292	17.5197993	106	80.3914983	17.4864939	121	80.4024480	17.5841353	1	82.0	29.99588	17.5727279
2	80.4127790	17.5194560	109	80.3924871	17.4859461	124	80.4045111	17.5824174	3	82.0	29.99231	17.5727467
3	80.4126294	17.5197267	110	80.3925407	17.4851270	127	80.4087643	17.5848192	3	82.0	29.99594	17.5728096
4	80.4125272	17.5189090	111	80.3886909	17.4901759	130	80.4118188	17.5844049	3	82.0	29.99594	17.5728096
5	80.4123292	17.5197993	112	80.3899742	17.4900839	133	80.4121199	17.5843186	3	82.0	29.99437	17.5728515
6	80.4125937	17.5171768	113	80.3899247	17.4906353	136	80.4254376	17.5845545	3	82.0	29.99437	17.5728515
7	80.4122698	17.5166499	114	80.3907999	17.4914535	139	80.4323533	17.5847486	3	82.0	29.99673	17.5845117
8	80.4123022	17.5166422	115	80.3915913	17.4914998	142	80.4390615	17.5848266	3	82.0	29.99673	17.5845117
9	80.4123262	17.5155381	116	80.3930818	17.4854844	145	80.4412683	17.5849841	3	82.0	29.99673	17.5845117
10	80.4124501	17.5147666	117	80.3937048	17.4842193	148	80.4418766	17.5848726	3	82.0	29.99123	17.5843666
11	80.4123272	17.5144105	118	80.3936412	17.4858767	151	80.4251161	17.5847928	3	82.0	29.99745	17.5849430
12	80.4120618	17.5137460	119	80.3947541	17.4877829	154	80.4318895	17.5848400	3	82.0	29.99673	17.5845117
13	80.4128771	17.5133288	120	80.3945641	17.4870618	157	80.4319722	17.5846251	3	82.0	29.99673	17.5845117
14	80.4127951	17.5127931	121	80.3947092	17.4865372	160	80.4312035	17.5848481	3	82.0	29.99673	17.5845117
15	80.4120001	17.5119743	122	80.3923814	17.4910368	163	80.4412683	17.5849841	3	82.0	29.99673	17.5845117
16	80.4121510	17.5117909	123	80.3933661	17.4910368	166	80.4418766	17.5848726	3	82.0	29.99673	17.5845117
17	80.4113377	17.5107501	124	80.3943618	17.4920247	169	80.4407563	17.5837935	3	82.0	29.99673	17.5845117
18	80.4113871	17.5106373	125	80.3952799	17.4921170	172	80.4407563	17.5837935	3	82.0	29.99673	17.5845117
19	80.4113866	17.5091380	126	80.3962794	17.4920015	175	80.4444598	17.5837112	3	82.0	29.99673	17.5845117
20	80.4112849	17.5086971	127	80.3972423	17.4927384	178	80.4438895	17.5838473	3	82.0	29.99673	17.5845117
21	80.4108982	17.5091750	128	80.3980384	17.4920274	181	80.4438895	17.5838473	3	82.0	29.99673	17.5845117
22	80.4105341	17.5084991	129	80.3990241	17.4923545	184	80.4438895	17.5838473	3	82.0	29.99673	17.5845117
23	80.4103012	17.5083697	130	80.3998578	17.4921516	187	80.4431418	17.5838355	3	82.0	29.99673	17.5845117
24	80.4097388	17.5081799	131	80.4007321	17.4919566	190	80.4431418	17.5838355	3	82.0	29.99673	17.5845117
25	80.4093841	17.5081799	132	80.4016284	17.4919566	193	80.4431418	17.5838355	3	82.0	29.99673	17.5845117
26	80.4092788	17.5077188	133	80.4025247	17.4919566	196	80.4431418	17.5838355	3	82.0	29.99673	17.5845117
27	80.4091722	17.5072726	134	80.4034210	17.4919566	199	80.4431418	17.5838355	3	82.0	29.99673	17.5845117
28	80.4090756	17.5068365	135	80.4043173	17.4919566	202	80.4431418	17.5838355	3	82.0	29.99673	17.5845117
29	80.4089790	17.5064004	136	80.4052136	17.4919566	205	80.4431418	17.5838355	3	82.0	29.99673	17.5845117
30	80.4088824	17.5059643	137	80.4061099	17.4919566	208	80.4431418	17.5838355	3	82.0	29.99673	17.5845117
31	80.4087858	17.5055282	138	80.4070062	17.4919566	211	80.4431418	17.5838355	3	82.0	29.99673	17.5845117
32	80.4086892	17.5050921	139	80.4079025	17.4919566	214	80.4431418	17.5838355	3	82.0	29.99673	17.5845117
33	80.4085926	17.5046560	140	80.4087988	17.4919566	217	80.4431418	17.5838355	3	82.0	29.99673	17.5845117
34	80.4084960	17.5042200	141	80.4096951	17.4919566	220	80.4431418	17.5838355	3	82.0	29.99673	17.5845117
35	80.4084000	17.5037839	142	80.4105914	17.4919566	223	80.4431418	17.5838355	3	82.0	29.99673	17.5845117
36	80.4083040	17.5033478	143	80.4114877	17.4919566	226	80.4431418	17.5838355	3	82.0	29.99673	17.5845117
37	80.4082080	17.5029117	144	80.4123840	17.4919566	229	80.4431418	17.5838355	3	82.0	29.99673	17.5845117
38	80.4081120	17.5024756	145	80.4132803	17.4919566	232	80.4431418	17.5838355	3	82.0	29.99673	17.5845117
39	80.4080160	17.5020395	146	80.4141766	17.4919566	235	80.4431418	17.5838355	3	82.0	29.99673	17.5845117
40	80.4079200	17.5016034	147	80.4150729	17.4919566	238	80.4431418	17.5838355	3	82.0	29.99673	17.5845117
41	80.4078240	17.5011673	148	80.4159692	17.4919566	241	80.4431418	17.5838355	3	82.0	29.99673	17.5845117
42	80.4077280	17.5007312	149	80.4168655	17.4919566	244	80.4431418	17.5838355	3	82.0	29.99673	17.5845117
43	80.4076320	17.5002951	150	80.4177618	17.4919566	247	80.4431418	17.5838355	3	82.0	29.99673	17.5845117
44	80.4075360	17.4998590	151	80.4186581	17.4919566	250	80.4431418	17.5838355	3	82.0	29.99673	17.5845117
45	80.4074400	17.4994229	152	80.4195544	17.4919566	253	80.4431418	17.5838355	3	82.0	29.99673	17.5845117
46	80.4073440	17.4989868	153	80.4204507	17.4919566	256	80.4431418	17.5838355	3	82.0	29.99673	17.5845117
47	80.4072480	17.4985507	154	80.4213470	17.4919566	259	80.4431418	17.5838355	3	82.0	29.99673	17.5845117
48	80.4071520	17.4981146	155	80.4222433	17.4919566	262	80.4431418	17.5838355	3	82.0	29.99673	17.5845117
49	80.4070560	17.4976785	156	80.4231396	17.4919566	265	80.4431418	17.5838355	3	82.0	29.99673	17.5845117
50	80.4069600	17.4972424	157	80.4240359	17.4919566	268	80.4431418	17.5838355	3	82.0	29.99673	17.5845117
51	80.4068640	17.4968063	158	80.4249322	17.4919566	271	80.4431418	17.5838355	3	82.0	29.99673	17.5845117
52	80.4067680	17.4963702	159	80.4258285	17.4919566	274	80.4431418	17.5838355	3	82.0	29.99673	17.5845117
53	80.4066720	17.4959341	160	80.4267248	17.4919566	277	80.4431418	17.5838355	3	82.0	29.99673	17.5845117
54	80.4065760	17.4954980	161	80.4276211	17.4919566	280	80.4431418	17.5838355	3	82.0	29.99673	17.5845117
55	80.4064800	17.4950619	162	80.4285174	17.4919566	283	80.4431418	17.5838355	3	82.0	29.99673	17.5845117
56	80.4063840	17.4946258	163	80.4294137	17.4919566	286	80.4431418	17.5838355	3	82.0	29.99673	17.5845117
57	80.4062880	17.4941897	164	80.4303100	17.4919566	289	80.4431418	17.5838355	3	82.0	29.99673	17.5845117
58	80.4061920	17.4937536	165	80.4312063	17.4919566	292	80.4431418	17.5838355	3	82.0	29.99673	17.5845117
59	80.4060960	17.4933175	166	80.4321026	17.4919566	295	80.4431418	17.5838355	3	82.0	29.99673	17.5845117
60	80.4060000	17.4928814	167	80.4329989	17.4919566	298	80.4431418	17.5838355	3	82.0	29.99673	17.5845117
61	80.4059040	17.4924453	168	80.4338952	17.4919566	301	80.4431418	17.5838355	3	82.0	29.99673	17.5845117
62	80.4058080	17.4920092	169	80.4347915	17.4919566	304	80.4431418	17.5838355	3	82.0	29.99673	17.5845117
63	80.4057120	17.4915731	170	80.4356878	17.4919566	307	80.4431418	17.5838355	3	82.0	29.99673	17.5845117
64	80.4056160	17.4911370	171	80.4365841	17.4919566	310	80.4431418	17.5838355	3	82.0	29.99673	17.5845117
65	80.4055200	17.4907009	172	80.4374804	17.4919566	313	80.4431418	17.5838355	3	82.0	29.99673	17.5845117
66	80.4054240	17.4902648	173	80.4383767	17.4919566	316	80.4431418	17.5838355	3	82.0	29.99673	17.5845117
67	80.4053280	17.4898287	174	80.4392730	17.4919566	319	80.4431418	17.5838355	3	82.0	29.99673	17.5845117
68	80.4052320	17.4893926	175	80.4401693	17.4919566	322	80.4431418	17.5838355	3	82.0	29.99673	17.5845117
69	80.4051360	17.4889565	176	80.4410656	17.4919566	325	80.4431418	17.5838355	3	82.0	29.99673	17.5845117
70	80.4050400	17.4885204	177	80.4419619	17.4919566	328	80.4431418	17.5838355	3	82.0	29.99673	17.5845117
71	80.4049440	17.4880843	178	80.4428582	17.4919566	331	80.4431418	17.5838355	3	82.0	29.99673	17.5845117
72	80.4048480	17.4876482	179	80.4437545	17.4919566	334	80.4431418	17.5838355	3	82.0	29.99673	17.5845117
73	80.4047520	17.4872121	180	80.4446508	17.4919566	337	80.4431418	17.5838355	3	82.0	29.99673	17.584