

No. F43Q3

Scale 1:50,000

Khargon (West Nimar) MADHYA PRADESH F43P14 (46O/14)	F43Q2 (55C/2)	Khandwa (East Nimar) MADHYA PRADESH F43Q6 (55C/6)
F43P15 (46O/15)	F43Q3 (55C/3)	Burhanpur MADHYA PRADESH F43Q7 (55C/7)
F43P16 (46O/16) Jalgaon MAHARASHTRA	F43Q4 (55C/4)	F43Q8 (55C/8)

1 Buldana, MAHARASHTRA.

भारतीय सर्वेक्षण विभाग

SURVEY OF INDIA

1st Edition 2010.

Price : Rs. 50/-

CONVENTIONAL SYMBOLS

Express highway, with toll; with bridge; with distance stone	
Roads, metalled, according to importance	
Roads, double carriageway, according to importance	
Unmetalled road, Cart-track, Pack-track with pass, Foot-path	
Streams, with track in bed, undefined, Canal	
Dams: masonry or rock-filled; earthwork. Weir	
River, dry with water channel, with island & rocks. Tidal river	
Submerged rocks, Shoal, Swamp, Reeds	
Wells: lined, unlined. Tube-well. Spring. Tanks: perennial, dry	
Embankments: road or rail, tank. Broken ground	
Railways, broad gauge: double; single with station; under constr.	
Railways, other gauges: double; single with distance stone; do.	
Mineral line or tramway. Kin. Cutting with tunnel	
Contours with sub-features. Rocky slopes. Cliffs	
Sand features (1)flat, (2)sand-hills(permanent), (3)dunes(shifting)	
Towns or Villages: inhabited; deserted. Fort	
Huts: permanent; temporary. Tower. Antiquities	
Temple, Chhatra, Church, Mosque, Idgah, Tomb, Graves	
Lighthouse, Lightship, Buoys: lighted; unlighted. Anchorage	
Mine: Vine on trellis. Grass. Scrub	
Palms: palmyra; other. Plantain. Conifer. Bamboo. Other trees	
Areas: cultivated; wooded. Surveyed tree	
Boundary, international	
state: demarcated; undemarcated	
district: subdivision; tahsil or taluk; forest	
Boundary pillars: surveyed; unlocated	
Heights, triangulated: station; point; approximate	
Bench-mark: geodetic; tertiary; canal	
Post office. Telegraph office. Overhead tank	
Rest house or inspection bungalow. Circuit house. Police station	
Camping ground. Forest: reserved; protected	
Spaced names: administrative; locality or tribal	
Hospital. Dispensary. Veterinary: Hospital / Dispensary	
Aerodrome. Helipad. Tourist site	
Power line: with pylons surveyed; with poles unsurveyed	

NOTES :-

Heights are in metres and above Indian mean sea level.
Contours are approximate.
A relative height, e.g., -3, represents the approximate height, in metres, between the top and bottom of a steep slope.
The triangulated height and contours in this sheet have not been adjusted to the height of the spirit levelled bench-marks and may not be strictly in accordance with them.
The common forest boundaries have not been shown for want of reliable information.
In Marathi names the letter 'd' has frequently the sound 'y' invariably the sound of 'l'; and 'v' invariably that of 'w' when an initial letter, and of 'o' when otherwise placed.
The state boundary between Madhya Pradesh and Maharashtra states has been surveyed as pointed out by the local officials on the ground but has not been verified by the Government of Madhya Pradesh.

COMPILATION INDEX

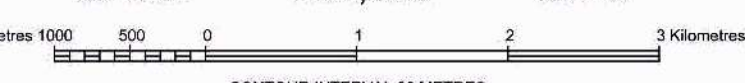
A. Surveyed during 1977-78. Updated for major details during 2005-06.



Projection - UTM Datum - WGS 84

Magnetic Variation from True North about $\frac{1}{4}^{\circ}$ West in 2005.
(Decreasing by about 1' annually).

1:50,000



CONTOUR INTERVAL 20 METRES

For further details about this map, please contact

Director
Madhya Pradesh Geo-Spatial Data Centre
Survey of India
Survey Colony, Vijaynagar
Jabalpur.

WEBSITE - www.surveyofindia.gov.in

Reproduction in whole or part by any means is prohibited
without the written permission of Survey of India, the



REG. No. 8952 -SPG D'10 (Madhya Pradesh GDC-1:50,000)-1010.

भारत के महसूल के निदेशन में प्रकाशित,
Published under the direction of Surveyor General of India.

PRINTED AT THE SOUTHERN PRINTING GROUP OF SURVEY OF INDIA.

मध्य प्रदेश
MADHYA PRADESH

FIRST EDITION

Magnetic Variation from True North about 1° West in 1975.

INDIA
REFER TO THIS MAP AS:- 1:50,000
SHEET 55 C/7 FIRST EDITION

No. 55 C

EAST NIMAR DISTRICT.

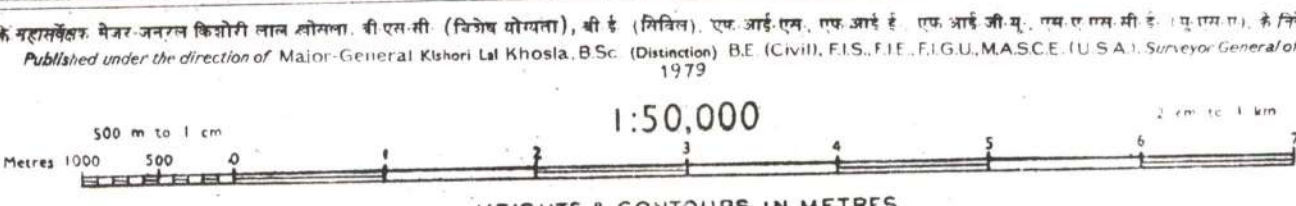
Surveyed 1977-78.



Scale: 1:50,000 (N.W.C. 42:1:50,000-36.0.80.)
Roads, metalled according to importance: distance stone
unmetalled do do bridge
Cart-track: Pack-track and pass: Foot-path with bridge
Bridges: with piers: without: Cusumy: Ford or ferry
Streams: with track in bed: undefined: Canal
Dams: masonry or rock-filled: earthwork: Weir
River banks: shelving: steep: 3 to 5 metres: over 5 metres
dry with water channel: with sand & rocks: Tidal river
Submerged rocks: Shoal: Swamp: Reeds
Wells: lined: unlined: Tube: well: Spring: Tanks: perennial: dry
Embankments: road or rail: tank: Broken ground
Railways: broad gauge: double: single: with station: under construction
other gauges: do do with distance: station: do
Light railway or tramway: Telegraph line: Cutting: with tunnel
Contours: with sub-features: Rocky slopes: Cliffs
Sand features: (1) Sand: (2) Sand dunes: (3) Shifting dunes

Index to Sheets

55C	55D	55E
55F	55G	55H
55I	55J	55K



HEIGHTS & CONTOURS IN METRES
CONTOUR INTERVAL 20 METRES

Water features are shown in blue where they generally contain water.
Cultivated areas are coloured yellow.
The exterior boundaries of areas of Reserved or Protected Forests are shown by green ribbons.
Contours are approximate.
A relative height, in metres, between the approximate height, in metres, between the top and bottom of a steep slope.
Wooded areas are coloured green. Scattered trees and other vegetation are in green, but prominent surveyed trees are in black.

The triangulated heights and contours in this sheet have not been adjusted to the heights of the spirit-levelled bench-marks and may not be strictly in accordance with them.
Unmetalled roads and cart-roads are metalled and jeetable respectively in 1977-78.
Contours are periodic and dependent on rainfall.
Common forest boundaries have not been shown for want of reliable information.

Administrative Index
EAST NIMAR

Towns or Villages: inhabited: deserted: Fort: ...
Huts: permanent: temporary: Tower: Ancestral: ...
Temple: Chhatra: Church: Mosque: Light: Tomb: Graves: ...
Lighthouse: Lightship: Buoy: Lighted: unlighted: Anchorage: ...
Mine: View on profile: Grass: Scrub: ...
Palm: palmyra: other: Pansan: Conifer: Bamboo: Other trees: ...
Boundary: international: ...
State: demarcated: undemarcated: ...
District: addition: subtraction: ...
Boundary pillars: corrupted: uncorrupted: village: ...
Height: triangulated: station: point: approximate: ...
Bench-marks: geodetic: tertiary: canal: ...
Post office: Telegraph office: Combined office: Police station: ...
Bungalow: dikh or chhatra: inspection: A.C. house: ...
Circular house: Camping ground: Forest: reserved: protected: ...
Spiced names: administrative: locality or tribal: ...

GOVERNMENT OF INDIA COPYRIGHT, 1977.
Price: Five Rupees.

REFER TO THIS MAP AS:- 1:50,000
SHEET 55 C/7 FIRST EDITION
INDIA भारत