

Diversion of 10.2217 ha. of Forest Land for road widening(Four laning) of existingPipli-Bhavnagar Section on NH-751 from village Adhelai (CH 136+000) to Nari Junction (CH KM 169+308)passing through Blackbuck National Park(5.2937 Ha.) and its Eco-sensitive zone and R.F. in Wildlife Sub Division Bhavnagar (4.928 Ha.) in Favour of Project Director, NHAI-PIU Ahmedabad.



F42L15 (41N15)	F43G3 (46B3)	F43G7 (46B7)
F42L16 (41N16)	F43G4 (46B4)	F43G8 (46B8)
F42R13 (41O13)	F43M1 (46C11)	F43M5 (46C5)

1 Bharat, GUJARAT.

भारतीय सर्वेक्षण विभाग SURVEY OF INDIA
1st Edition 2011. Price : Rs. 77/-

CONVENTIONAL SYMBOLS

Express Highway with toll with bridge with distance stone	
Roads, metalled, according to importance	
Roads, double cartway, according to importance	
Unmetalled road, Cart track, Pack-track with pass, Foot-path	
Streams, with track in bed, underflow, Canal	
Dams, masonry or rock-filled, earthwork, Weir	
River dry with water channel, with island & rocks, Tidal river	
Submerged rocks, Shoal, Stream, Rapids	
Wells, hand, unroofed, Spring, Tank, perennial, dry	
Embankments, road or rail, bank, Broken ground	
Railways, broad gauge, double, single with station, under constn.	
Railways, other gauges, double, single with station, under constn.	
Mineral line or tramway, Rail, Cutting with tunnel	
Contours with sub-features, Rocky slopes, Cliffs	
Sand features (Mud, (Sand-hill, dune), (Dune-shifting)	
Towns or Villages, inhabited, deserted, Fort	
Habit, permanent, temporary, Town, Abandoned	
Temples, Churches, Mosques, Temples, Forts, Castles	
Lighthouses, Lightships, Buoys, lighted, unlighted, Anchorage	
Mine, Vines on trees, Grass, Scrub	
Palms, palms, other, Plantain, Coriander, Bamboo, Other trees	
Areas, cultivated, uncultivated, Surveyed line	
Boundary, International	
State, demarcated, undemarcated	
District, subdivision, taluk or block, forest	
Boundary pillars, surveyed, uncoloured	
Height, trigonometrical station, spot, approximate	
Spot height, geodetic, levelling, canal	
Post office, Overhead tank	
Rest house or inspection bungalow, Circuit house, Police station	
Camping ground, Forest, reserved, protected	
Special reserve, administrative, locality or tribal	
Hospital, Dispensary, Veterinary Hospital, Dispensary	
Aeronautical, Helipad, Tourist site	
Power line, with pylons surveyed, with poles unsurveyed	

Reference
Proposed Road

NOTES :-

Heights and Contours have not been shown.
A relative height, e.g., 10, represents the approximate height, in metres, between the top and bottom of a steep slope.
Tanks, shown dry in this area usually contain water from July to December.
Contours in parks and forests are not reliable.
The edge has not been adjusted with Sheet No. 41N15, due to different year of survey.
The edge has not been adjusted with Sheet No. 46B4, due to different year and scale of survey.

COMPILATION INDEX

A. Compiled from 1:25,000 Survey, 1958-59.

Projection - UTM Datum - WGS 84

Magnetic Variation from True North about 1/2° West in 2005.
(Decreasing by about 1° annually)

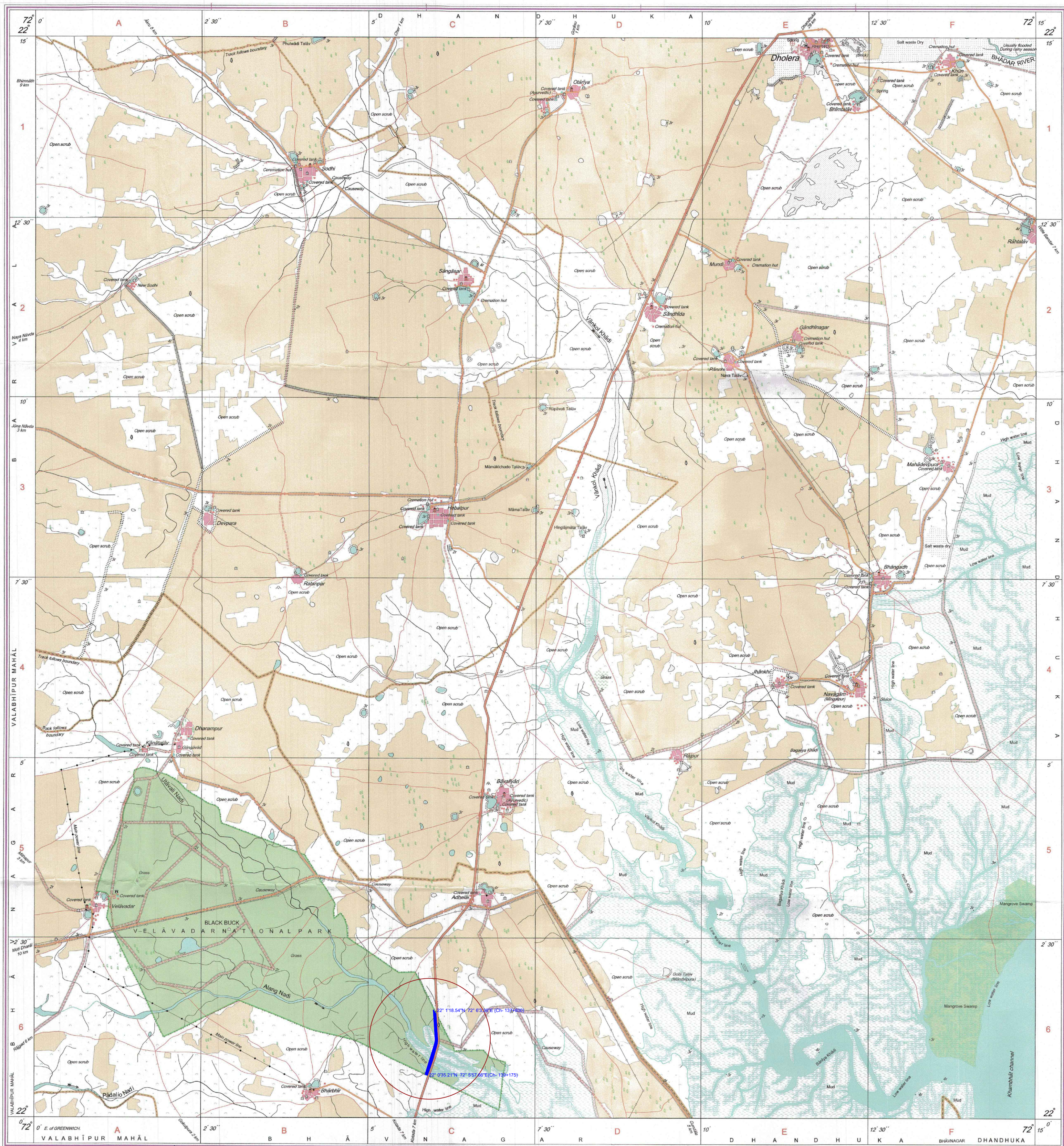
Scale 1:50,000
500 m to 1 cm
1:50,000
2 cm to 1 km

For further details about this map, please contact
Director
Gujarat, Daman & Diu Geo-Spatial Data Centre
Survey of India, Sector-10(A)
Gandhinagar.

WEBSITE: www.surveyofindia.gov.in

Reproduction in whole or part by any means is prohibited
without the written permission of Survey of India, the
National Mapping Agency.

© GOVERNMENT OF INDIA COPYRIGHT, 2011.



REG. No. SPG 011 GSD-150,000

Survey of India, Daman & Diu
Geo-Spatial Data Centre
Survey of India

भारत के सर्वेक्षण, सर्वेक्षण विभाग, भारत, के सर्वेक्षण के सर्वेक्षण.
Published under the direction of Swarna Subba Rao, B.E., Surveyor General of India,
Survey of India, Hathi-Barkala Estate, Post Box No. 37, Dehra Dun-248001 (Uttarakhand)
Department of Science & Technology, Government of India.

PRINTED AT THE SOUTHERN PRINTING GROUP OF SURVEY OF INDIA.

