

विषय के लिए नहीं NOT FOR EXPORT

OPEN SERIES MAP

No. H43R11

Scale 1:50,000

H43R6 (53G/6)	Saharanpur UTTAR PRADESH H43R10 (53G/10)	H43R14 (53G/14)
H43R7 (53G/7)	Muzaffarnagar UTTAR PRADESH H43R11 (53G/11)	H43R15 (53G/15)
Baghpat UTTAR PRADESH H43R8 (53G/8)	Haridwar UTTAR PRADESH H43R12 (53G/12) Muneri	H43R16 (53G/16)

1 Haridwar, UTTARAKHAND.

## CONVENTIONAL SYMBOLS

Roads, highway, with toll; with bridge; with distance stone	
Roads, railway, according to importance	
Roads, double according to importance	
Unimproved road, Car-track, Post-track with pass, Foot-path	
Stream: with track in bed, undefined Canal	
Dams, masonry or rock-built, earthenwork, Weir	
River: dry with water channel; with island & rocks, Tidal river	
Submerged rocks, Shoal, Swamp, Reeds	
Wells, Inlet, Lake, Tidal water, Spring, Trench, perennial dry	
Earthquake, forest, or real or artificial ground	
Railways, broad gauge, double, single, passenger, and/or goods	
Railways, other gauges: double, single with distance stone, etc.	
Mineral line or tarryway, Kink, Cutting with tunnel	
Contours with sub-features, Rocky slopes, Cliffs	
Set features (Flat, (2)and-Hill) (3)and-Hill) (3)and-Hill)	
Towns or Village (Inhabited), deserted, Fort	
Commercial place, public, private, and/or religious	
Temple, Church, Church, Mosque, Temple, Tomb, Graves	
Lighting (Lighting, Buoys, Lighter, Lighter, Anchorage)	
Mine, Vine or Inlet, Grass, Bush	
Palms, palms; other, Pines, Conifer, Bamboo, Other trees	
Amas cultivated, wooded, Cultivated tree	
Boundary, International	
Boundary, International	
Boundary, sub-features, unlabelled	
Height, triangulation station; point, approximate	
Benchmark, geodetic; tertiary, can	
Post office, Telegraph office, Overland train	
Rail road or inspection branch, Circuit, house, Police station	
Camp, Police station, Police station, Police station	
Special names, administrative, locality or tribal	
Hospital, Dispensary, Veterinary Hospital / Dispensary	
Aerodrome, Helipad, Tourist site	
Power line, with pylons surveyed, with poles unsurveyed	

## Proposed Gas Pipeline

**NOTES -**

Heights are in metres and above Indian mean sea level.  
Contours are approximate.  
A relative height,  $\Delta h$ , represents the approximate height, in metres, between the top and bottom of a slope or step.  
A relative height,  $\Delta z$ , against a zero, indicates its total depth in metres.  
Trails show dry, if the trail is open; under heavy forest by December.  
Wells and Tropic-water are numerous throughout the sheet; only the important ones have been shown.  
The following symbols are used:  
• = required from the irrigation authorities.  
○ = alternate sluice narrow along road, culvert and canal are shown in solid type,  
—, ○ = whereas miniature numbers are shown in upright type, e.g., '5'.  
• = small dam, usually concrete, built by the Kill Nall (N'vbi) are liable to change owing to continual fluctuations in the course of rivers.  
The district and island boundaries follow the main deep water channel of Ilinan river  
and small (solid) lines show the boundaries of the various islands.

A	
---	--

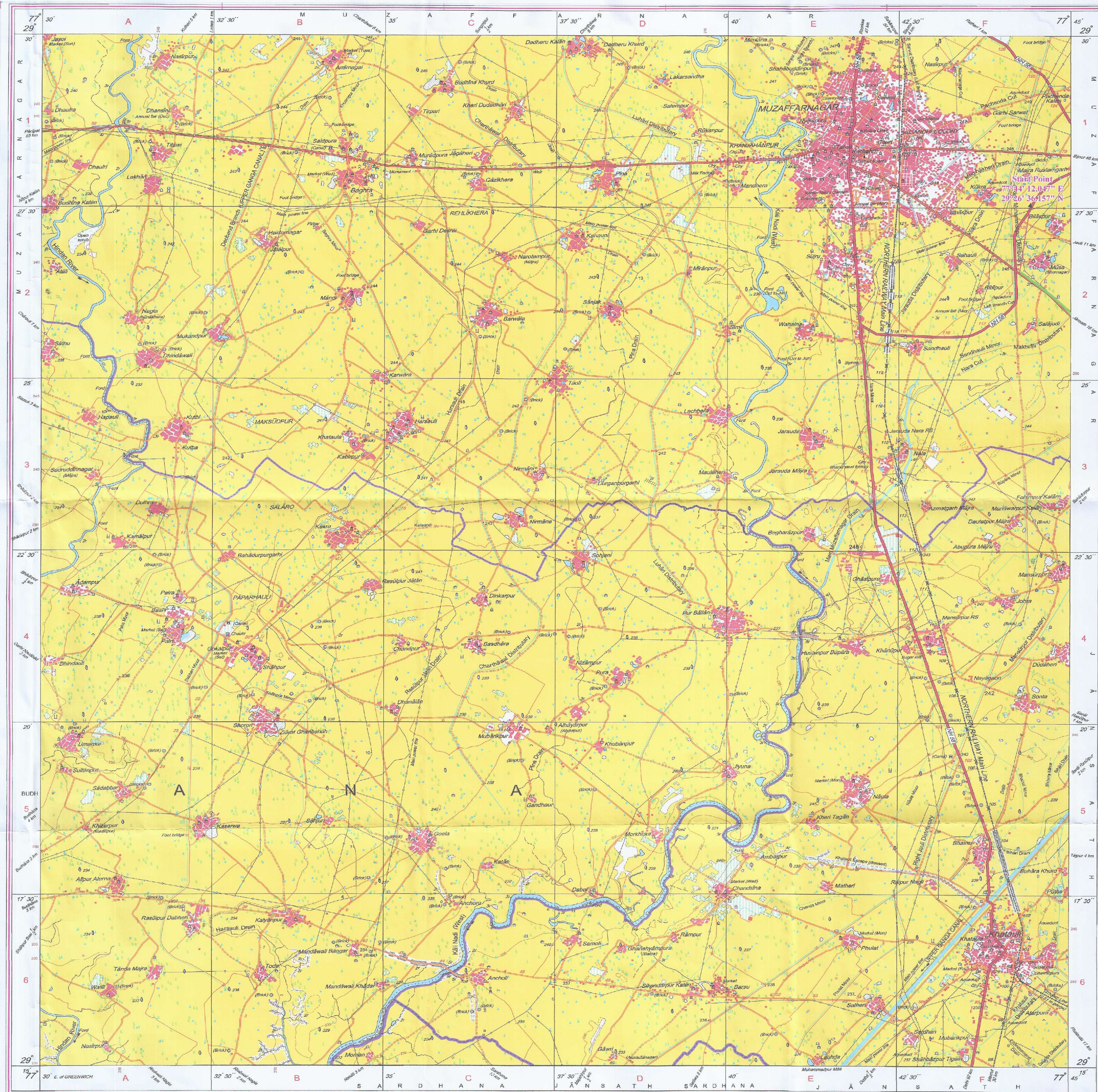
(Increasing by about 1° annually).

500 m to 1 cm      1:50,000      2 cm to 1 km

Metres 1000      500      0      1      2      3 Kilometres

CONTOUR INTERVAL 10 METRES

WEBSITE - [www.surveyofindia.gov.in](http://www.surveyofindia.gov.in)

 GOVERNMENT OF INDIA COPYRIGHT, 2009.

REG. No. -WPG D09 (Uttarakhand and west U.P. GDC-1,50,000)

भारत के महासर्वेक्षक के निदेशन में प्रकाशित,  
Published under the direction of Surveyor General of India,  
Survey of India, Hāthībarkāla Estate, Post Box No.37, Dehra Dūn-248001 (Uttarākhānd),  
Department of Science & Technology, Government of India.

PRINTED AT THE WESTERN PRINTING GROUP OF SURVEY OF INDIA.  
RACHIN KANSAL  
D.G.M.  
I.G.L. Muzaffarnagar



PRINTED AT THE WESTERN PRINTING GROUP OF SURVEY OF INDIA.