



निर्यात के लिए नहीं NOT FOR EXPORT

OPEN SERIES MAP

No. H43115

Scale 1:50,000

Faridkot PUNJAB H43110 (44J/10)	H43114 (44J/14)	Moga PUNJAB H43J2 (44N/2)
Sri Muktesar Sahib PUNJAB H43111 (44J/11)	H43115 (44J/15)	H43J3 (44N/3)
H43112 (44J/12)	Bathinda PUNJAB H43116 (44J/16)	H43J4 (44N/4)

1 Firozpur, PUNJAB.

भारतीय सर्वेक्षण विभाग

SURVEY OF INDIA

1st Edition 2007; 2nd 2019.

Price : ₹. 119/-

CONVENTIONAL SYMBOLS

Express highway: with toll, with bridge, with distance stone		20
Roads, metalled: according to importance		
Roads, double cartway: according to importance		
Unmetalled road, Cart-track, Pack-track with path, Foot-path		
Stream, with track in bed, underdrain, Canal		
Dam: masonry or rock-filled, earthenwork, Weir		
River, dry with water channel; with island & rocks, Tidal river		
Submerged reef, Shoal, Swam, Reeds		
Water: tank, unlined, Tube-well, Spring, Tank, perennial, dry		
Embankment: road or rail, tank, Broken ground		
Railways, broad gauge: double, single with distance stone, under concern		
Railways, other gauge: double, single with distance stone, do.		
Mineral line or temporary, Oil, Cutting, slope, Cliff		
Contours with sub-features, Rocky slopes, Cliff		
Sand features: (Wind-blown-silt) (Impervious) (Dunes/sandhills)		
Towns or Villages: inhabited, deserted, fort		
Huts: permanent, temporary, Tower, Aqueduct		
Temple, Chhatra, Church, Mosque, Light, Tomb, Graves		
Lighthouse, Lightship, Buoy, Lighted, unlighted, Anchorage		
Mine: Voss on metal, Grass, Scrub		
Palms, palms, other, Plain, Conifer, Bamboo, Other trees		
Areas: cultivated, wooded, Surveyed tree		
Boundary, International		
- same: demarcated, undemarcated		
- diatric subdivision, tank or tank forest		
Boundary pillars: surveyed, unlocated		
Heights, triangulated, station, point, approximate		200 .200 .200
Bench-mark: geodetic, tertiary, canal		BM 63.3 .BM 42.3
Post office, Overhead tank		
Rest house or inspection bungalow, Circuit house, Police station		
Camping ground, Forest: reserved, protected		RF PF
Spaced names: administrative, locality or tribal		KIKRI NAGA
Hospital, Dispensary, Veterinary, Hospital/Dispensary		
Aerodrome, Helipad, Tourist site		
Power line: with pylons surveyed, with poles unsurveyed		

REFERENCE

NH 54 National Highway No. 54

NOTES :-

Heights are in metres and above Indian mean sea level.
Contours are approximate.
A relative height, Δ , represents the approximate height, in metres, between the top and bottom of a steep slope.
Tanks shown dry, in this area usually contain water from July to December.
A relative height, e.g. Δ , marked along a canal, indicates the height of the top of the canal embankment above the adjacent country.
3000-acre reclamation scheme of Bathinda Dam Project survey based on origin $30^{\circ} 00' N$, $75^{\circ} 00' E$ with their numbers are shown as tertiary bench-mark thus: Δ 555, BM 203.5

COMPILATION INDEX

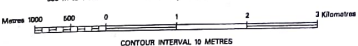
A. Compiled from 1:25,000 survey 2010-11.



Projection - UTM Datum - WGS 84

Magnetic Variation from True North about $1\frac{1}{2}^{\circ}$ East in 2015. (Increasing by about $\frac{1}{2}$ annually).

1:50,000



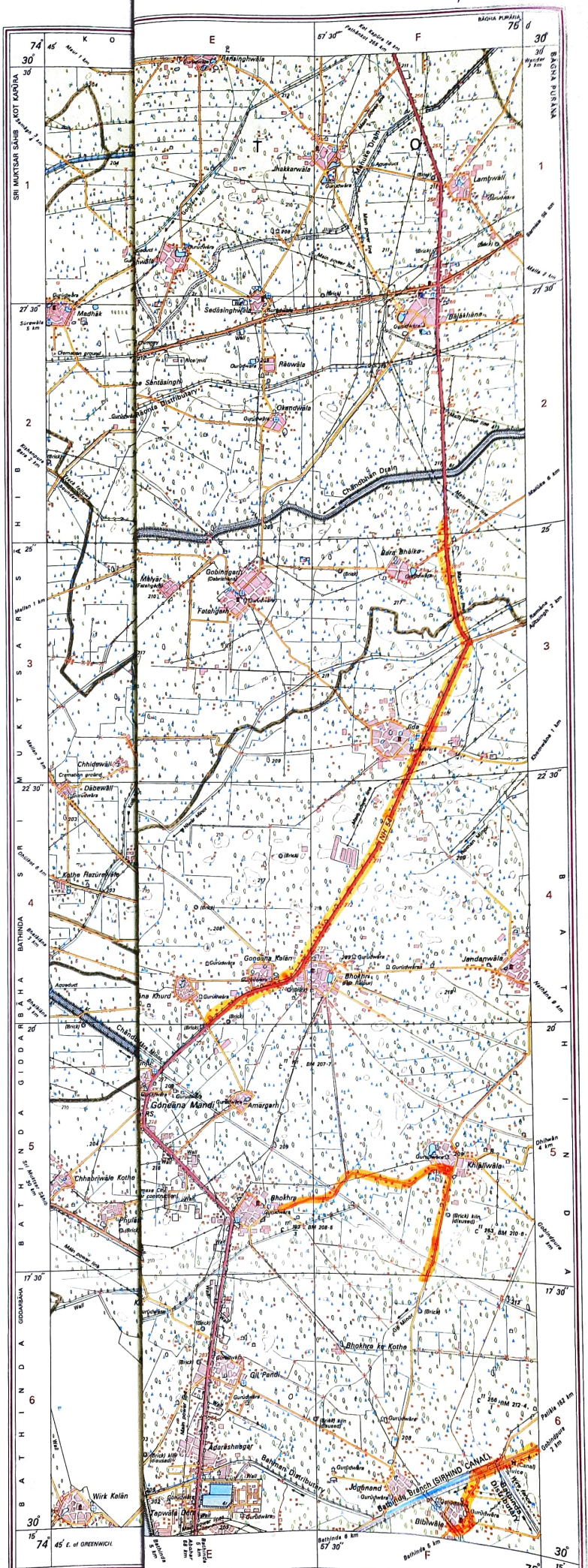
CONTOUR INTERVAL 10 METRES

For further details about this map, please contact
Director
Punjab, Haryana & Chandigarh Geo-Spatial Data Centre
Survey of India, Sector 32 A
Chandigarh.
Fax : 0172 - 2604671

WEBSITE - www.surveyofindia.gov.in

Reproduction in whole or part by any means is prohibited without the written permission of Survey of India, the National Mapping Agency.

GOVERNMENT OF INDIA COPYRIGHT, 2019.



PI. 005 - PH&C ODC - 30

PRINTED AT THE NORTHERN PRINTING GROUP OF SURVEY OF INDIA.

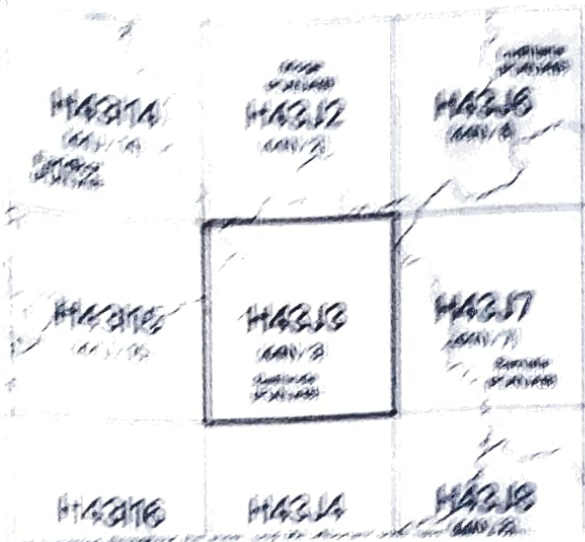


सर्वेक्षण विभाग, भारत सरकार

OPEN SERIES MAP

No. H43J3

Scale 1:50,000



1. The scale and projection of this map are the same as those of the map on which it is based. The scale and projection of the map on which it is based are given in the margin of this map.

2. The scale and projection of this map are the same as those of the map on which it is based. The scale and projection of the map on which it is based are given in the margin of this map.

EXPLANATORY NOTES

1. Surveyed during 1961-62

Projection - UTM Datum - WGS 84

Magnetic Variation from True North about 1° East in 2005
(Increasing by about 1" annually)

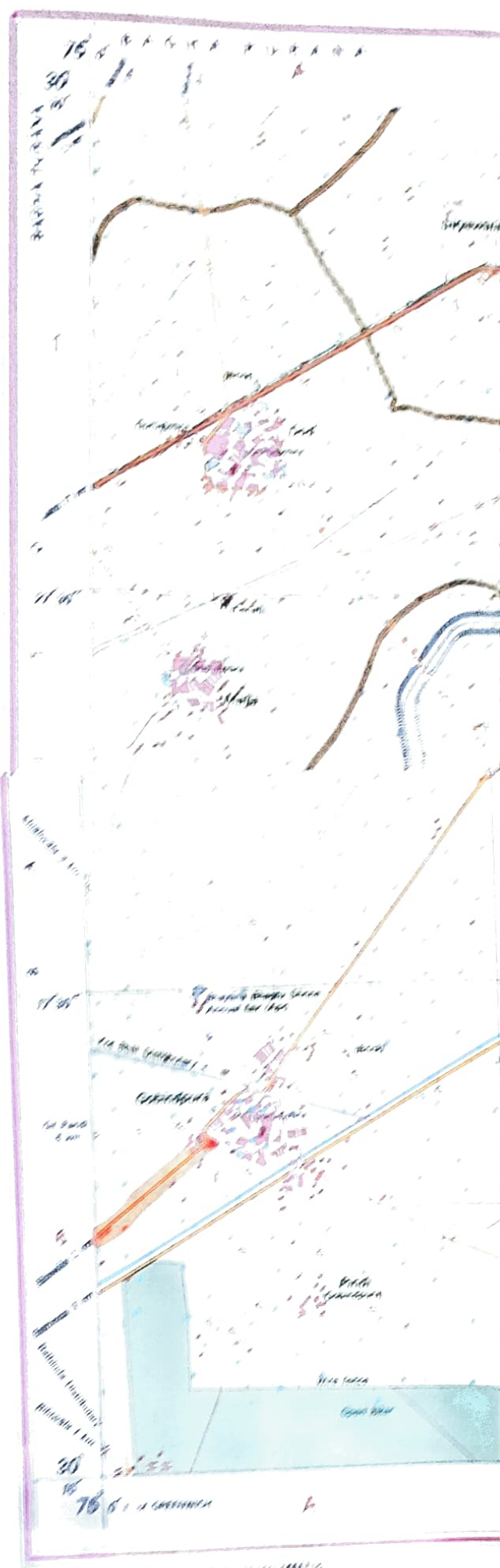
1:50,000



The Central Geomatics Board has issued general orders
Surveyors
Director, Directorate of Geomatics, Survey of India, Geomatics Centre
Survey of India, Geomatics Centre
New Delhi - 110067

WEBSITE: www.surveyofindia.gov.in

Reproduction in whole or part by any means is prohibited
without the written permission of Survey of India, Plot
Number 1, Connaught Place.



1:50,000