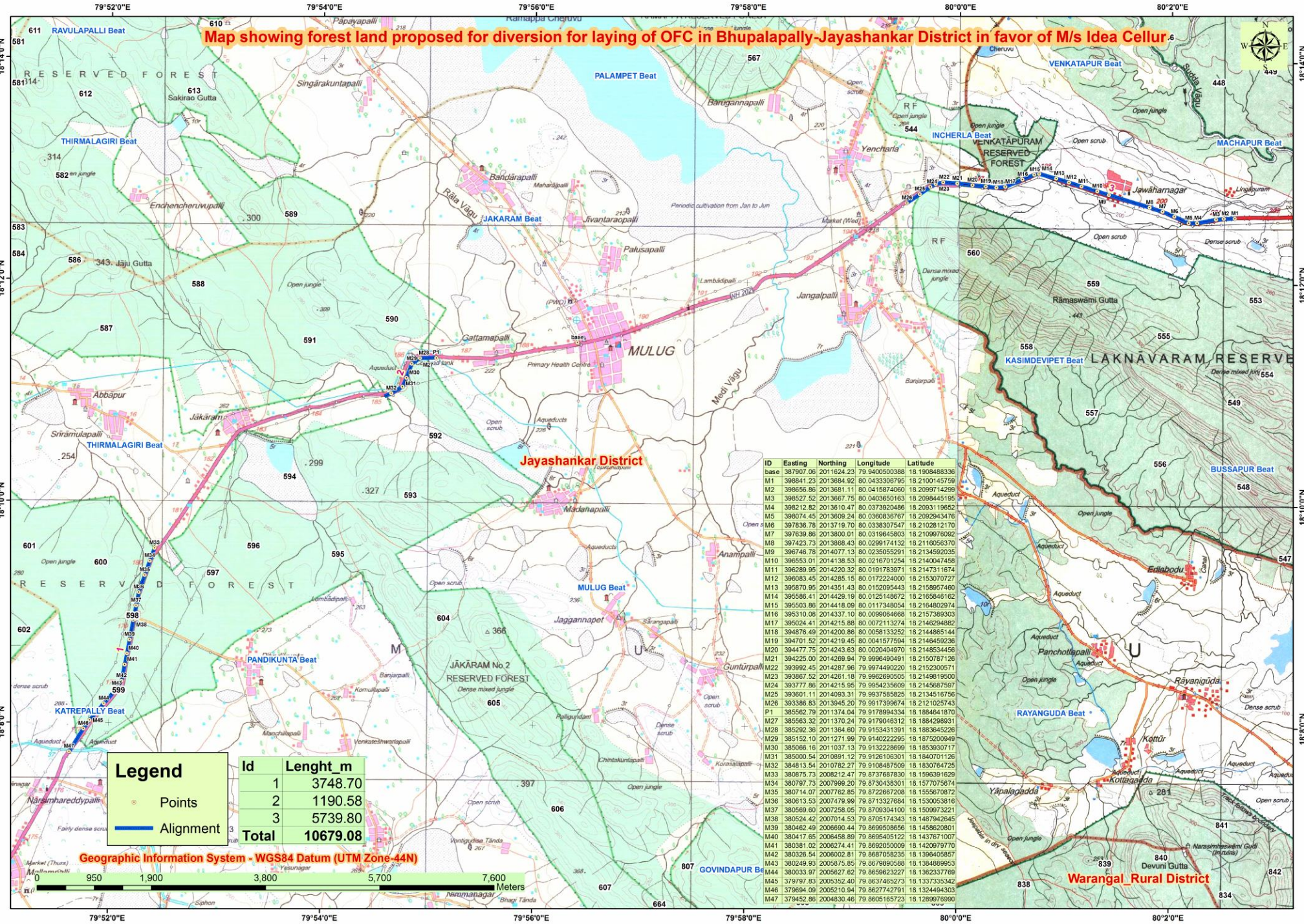


Map showing forest land proposed for diversion for laying of OFC in Bhupalapally-Jayashankar District in favor of M/s Idea Cellur



Legend	Id	Length_m
○ Points	1	3748.70
— Alignment	2	1190.58
	3	5739.80
	Total	10679.08

ID	Easting	Northing	Longitude	Latitude
base	387907.06	2011624.23	79.9403500388	18.1908488336
M1	396841.23	2013694.92	80.0433303795	18.2100143759
M2	396656.86	2013681.11	80.0415874060	18.2099714299
M3	39527.52	2013667.75	80.0403650163	18.2098445195
M4	398212.82	2013610.47	80.0373920486	18.2093119652
M5	398074.45	2013609.24	80.0360836767	18.2092943478
M6	397836.78	2013719.70	80.0338307547	18.2102812170
M7	397639.86	2013800.01	80.0319645803	18.2109976092
M8	397423.73	2013868.43	80.0298171132	18.2116650376
M9	396746.78	2014077.13	80.0230505291	18.2134592035
M10	396553.01	2014138.53	80.0216701254	18.2140047458
M11	396289.95	2014220.32	80.0191783971	18.2147311674
M12	396083.45	2014285.15	80.0172224000	18.2153070727
M13	395870.95	2014351.43	80.0152095443	18.2158957460
M14	395666.41	2014429.19	80.0125148672	18.2165846162
M15	395503.86	2014418.09	80.0117349054	18.2164803974
M16	395310.08	2014337.10	80.0099064668	18.2157389303
M17	395024.41	2014215.88	80.0072113274	18.2146294882
M18	394876.49	2014200.86	80.0058133252	18.2144885144
M19	394701.52	2014219.45	80.0041577594	18.2146459236
M20	394477.75	2014243.63	80.0020404970	18.2148534456
M21	394225.00	2014269.94	79.999649491	18.2150787126
M22	393992.45	2014287.96	79.9971494220	18.2152209571
M23	393867.52	2014281.18	79.9952690505	18.2149819500
M24	393777.86	2014215.95	79.9954235609	18.2145687597
M25	393601.11	2014093.31	79.9937585825	18.2134516756
M26	393386.83	2013945.20	79.9917399674	18.2121025743
P1	385562.79	2011374.04	79.9178994334	18.1884641870
M27	385563.32	2011370.24	79.9179048312	18.1884296931
M28	385092.36	2011364.60	79.915341391	18.1883645226
M29	385152.10	2011271.99	79.9140222295	18.1883003949
M30	385066.16	2011037.13	79.9132228699	18.1853037177
M31	385000.54	2010891.12	79.9126106301	18.1840701126
M32	384813.54	2010782.27	79.9108487509	18.1830764725
M33	380875.73	2008212.47	79.8737687830	18.1596391629
M34	380797.73	2007999.20	79.8730438301	18.1577075674
M35	380714.07	2007762.85	79.8722667208	18.1556610872
M36	380613.53	2007519.99	79.8713327868	18.1536056263
M37	380569.60	2007258.05	79.8709304100	18.1509973221
M38	380524.42	2007014.53	79.8705174343	18.1487942645
M39	380462.49	2006690.44	79.8699508656	18.1458620801
M40	380417.65	2006458.89	79.8695405122	18.1437671007
M41	380381.02	2006274.41	79.8692050009	18.1420979770
M42	380326.54	2006062.81	79.8687056235	18.1396405857
M43	380249.93	2005875.95	79.8679890589	18.1374860563
M44	380033.97	2005627.62	79.8659623277	18.1362337769
M45	379797.83	2005352.40	79.8637485273	18.1337335342
M46	379694.09	2005210.94	79.8627742791	18.1324494303
M47	379452.86	2004830.46	79.8605165723	18.1289978990

Geographic Information System - WGS84 Datum (UTM Zone-44N)

0 950 1,900 3,800 5,700 7,600 Meters

Map showing forest land proposed for diversion for laying of OFC in Bhupalapally-Jayashankar District in favor of M/s Idea Cellur



ID	Easting	Northing	Longitude	Latitude
P1	465994.32	2001353.78	80.6785938933	18.1006773537
P2	465706.44	2001575.44	80.6758692871	18.1026761968
P3	465480.10	2001751.29	80.6737270804	18.1042620349
P4	465229.88	2001932.48	80.6713590907	18.1058956590
P5	464931.47	2002145.25	80.6685349741	18.1078140215
P6	464666.37	2002391.85	80.6679188216	18.1082340563
P7	463507.31	2003171.10	80.6560599640	18.1170622975
P8	463228.28	2003484.61	80.6524128661	18.118902845
P9	462925.74	2003835.69	80.6495468706	18.1230591577
P10	456483.36	2013943.01	80.5884358192	18.2142912414
P11	456070.48	2014248.46	80.5845244701	18.2170435728
P12	455994.32	2014306.70	80.5838029389	18.2175683589
P13	455799.14	2014343.49	80.5819561414	18.2178968706
P14	455365.86	2014348.29	80.5778562641	18.2179313125
P15	447455.15	2018394.24	80.5029382425	18.2543195713
P16	447196.32	2018548.48	80.5004858282	18.2557072618
M17	446884.50	2018719.95	80.4975316482	18.2572492923
M1	486523.10	1957704.93	80.8729032512	17.7063739737
M2	486535.45	1957821.27	80.8730009008	17.7074255511
M3	486615.46	1958136.54	80.8737174871	17.7102757957
M4	486621.16	1958210.79	80.8738248011	17.7109469140
M5	486603.67	1958342.88	80.8736590515	17.7121408154
M6	486566.58	1958455.76	80.8733084668	17.7131609007
M7	486515.92	1958557.52	80.8728300469	17.7140803373
M8	486457.88	1958815.40	80.8722810187	17.7164109583
M9	486415.52	1958988.12	80.8718804168	17.7179719168
M10	486411.25	1959307.68	80.8718381481	17.7208602860
M11	486336.46	1959582.06	80.8711309913	17.7233399155
M12	486223.41	1959855.83	80.8700629299	17.7258137874
M13	486200.44	1960004.26	80.8698452849	17.7271553507
M14	486194.93	1960313.97	80.8697912901	17.7299546982
M15	486186.33	1960406.80	80.8697096241	17.7307937173
M16	486127.45	1960566.47	80.8691532191	17.7322366195
M17	486104.18	1960599.99	80.8689331471	17.7330817332
MA1	481978.41	1979952.48	80.8298314113	17.9074322183
MA2	481977.58	1980155.90	80.8298435701	17.9092708505
MA3	481977.50	1980348.02	80.8298410849	17.9110073785
MA4	481976.21	1980587.31	80.8298269113	17.9131702776
MA5	481976.25	1980950.05	80.8298241053	17.9164489236
MA6	481977.22	1981265.87	80.8298305493	17.9193035132
MA7	481975.53	1981473.72	80.8298127791	17.9211821846
MA8	481835.65	1981662.78	80.8284904353	17.9228899073
MA9	479190.26	1985679.45	80.8034724522	17.9591714782
MA10	479001.55	1985959.29	80.8016874746	17.9616990208
MA11	478861.21	1986167.12	80.8003599033	17.9635761674
MA12	478669.97	1986451.17	80.7985509203	17.9661417939
MA13	478527.48	1986666.67	80.7972029224	17.9680881827
MA14	478367.63	1986904.93	80.7956908384	17.9702401356
MA15	478209.00	1987141.78	80.7941909964	17.9723793511
MA16	478062.00	1987380.97	80.7927994883	17.9743590015
MA17	477920.12	1987550.74	80.7914573866	17.9760728436
MA18	477771.81	1987757.41	80.7900544691	17.9779393850
MA19	477582.18	1988072.02	80.7882600308	17.9807810387
MA20	477412.61	1988319.84	80.7866556585	17.9830192376
MA21	477250.71	1988561.58	80.7851238405	17.9852024903
MA22	477136.55	1988733.56	80.7840436789	17.986758010
MA23	475539.95	1990368.46	80.7689439154	18.0015155341
MA24	475254.48	1990540.08	80.7662452567	18.0030635563
MA25	474884.84	1990767.99	80.7627507268	18.0051192323

Bit	District	Length_m	Remarks
Bit - 1	Bhupalapally-Jayashankar	657.17	ESZ
Bit - 2	Bhupalapally-Jayashankar	1241.39	RF
Bit - 3	Bhupalapally-Jayashankar	338.46	RF
Bit - 4	Bhadradi-Kothagudem	1405.45	RF
Bit - 5	Bhadradi-Kothagudem	939.52	RF
Bit - 6	Bhadradi-Kothagudem	1024.42	RF
Bit - 7	Bhadradi-Kothagudem	797.65	RF
Bit - 8	Bhadradi-Kothagudem	755.24	RF
Bit - 9	Bhadradi-Kothagudem	2641.95	RF
Bit - 10	Bhadradi-Kothagudem	1756.43	RF
Bit - 11	Bhadradi-Kothagudem	3156.71	ESZ

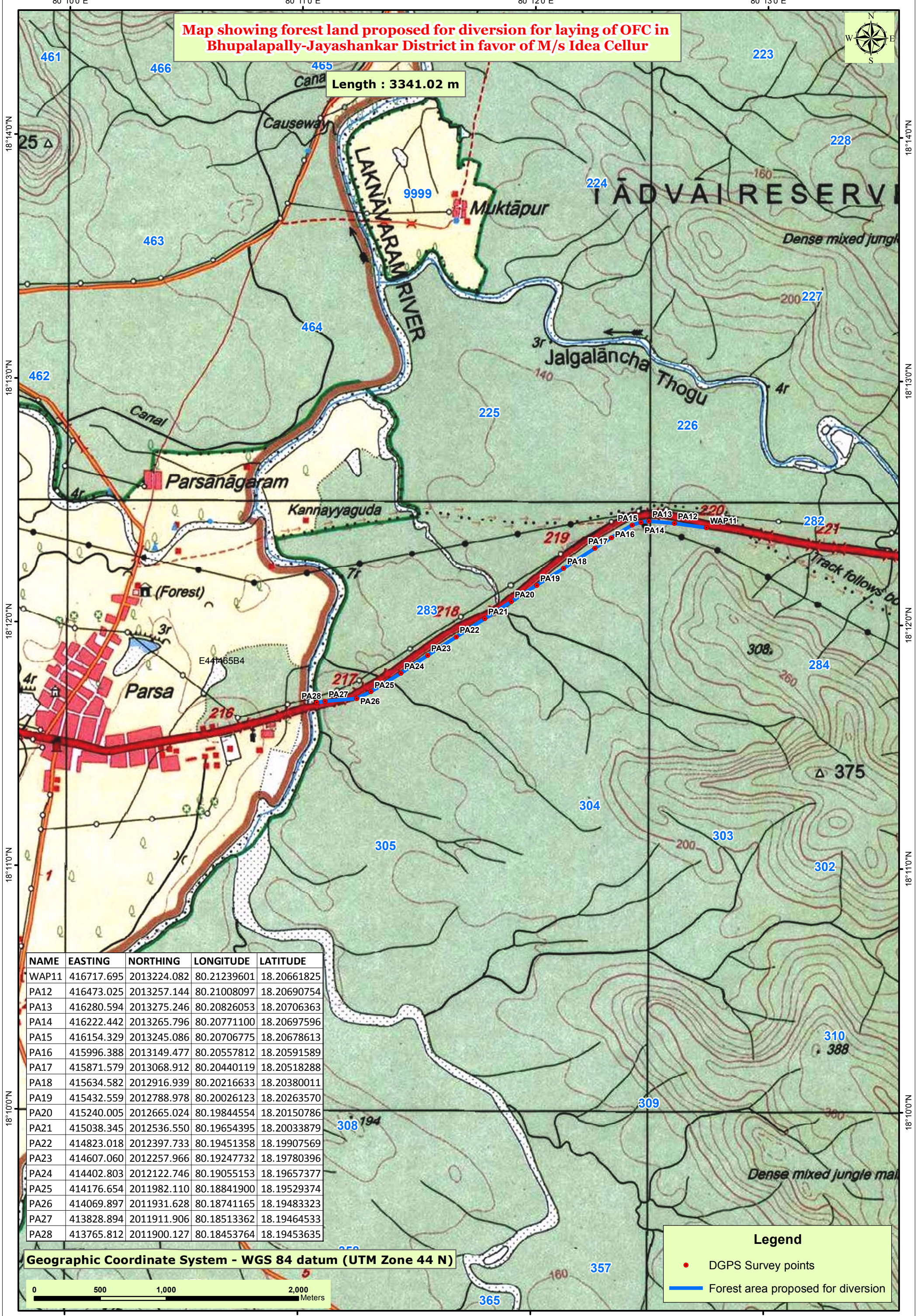
Legend
 Points
 Alignment_L
 ESZ
 RF



Geographic Information System - WGS84 Datum (UTM Zone-44N)

Map showing forest land proposed for diversion for laying of OFC in Bhupalapally-Jayashankar District in favor of M/s Idea Cellur

Length : 3341.02 m



NAME	EASTING	NORTHING	LONGITUDE	LATITUDE
WAP11	416717.695	2013224.082	80.21239601	18.20661825
PA12	416473.025	2013257.144	80.21008097	18.20690754
PA13	416280.594	2013275.246	80.20826053	18.20706363
PA14	416222.442	2013265.796	80.20771100	18.20697596
PA15	416154.329	2013245.086	80.20706775	18.20678613
PA16	415996.388	2013149.477	80.20557812	18.20591589
PA17	415871.579	2013068.912	80.20440119	18.20518288
PA18	415634.582	2012916.939	80.20216633	18.20380011
PA19	415432.559	2012788.978	80.20026123	18.20263570
PA20	415240.005	2012665.024	80.19844554	18.20150786
PA21	415038.345	2012536.550	80.19654395	18.20033879
PA22	414823.018	2012397.733	80.19451358	18.19907569
PA23	414607.060	2012257.966	80.19247732	18.19780396
PA24	414402.803	2012122.746	80.19055153	18.19657377
PA25	414176.654	2011982.110	80.18841900	18.19529374
PA26	414069.897	2011931.628	80.18741165	18.19483323
PA27	413828.894	2011911.906	80.18513362	18.19464533
PA28	413765.812	2011900.127	80.18453764	18.19453635

Geographic Coordinate System - WGS 84 datum (UTM Zone 44 N)

Legend

- DGPS Survey points
- Forest area proposed for diversion

