

ECO-SENSITIVE ZONE KARNALA BIRDS SANCTUARY

RESTRICTED

महाराष्ट्र MAHARASHTRA

SHEET 47 F/1 SECOND EDITION

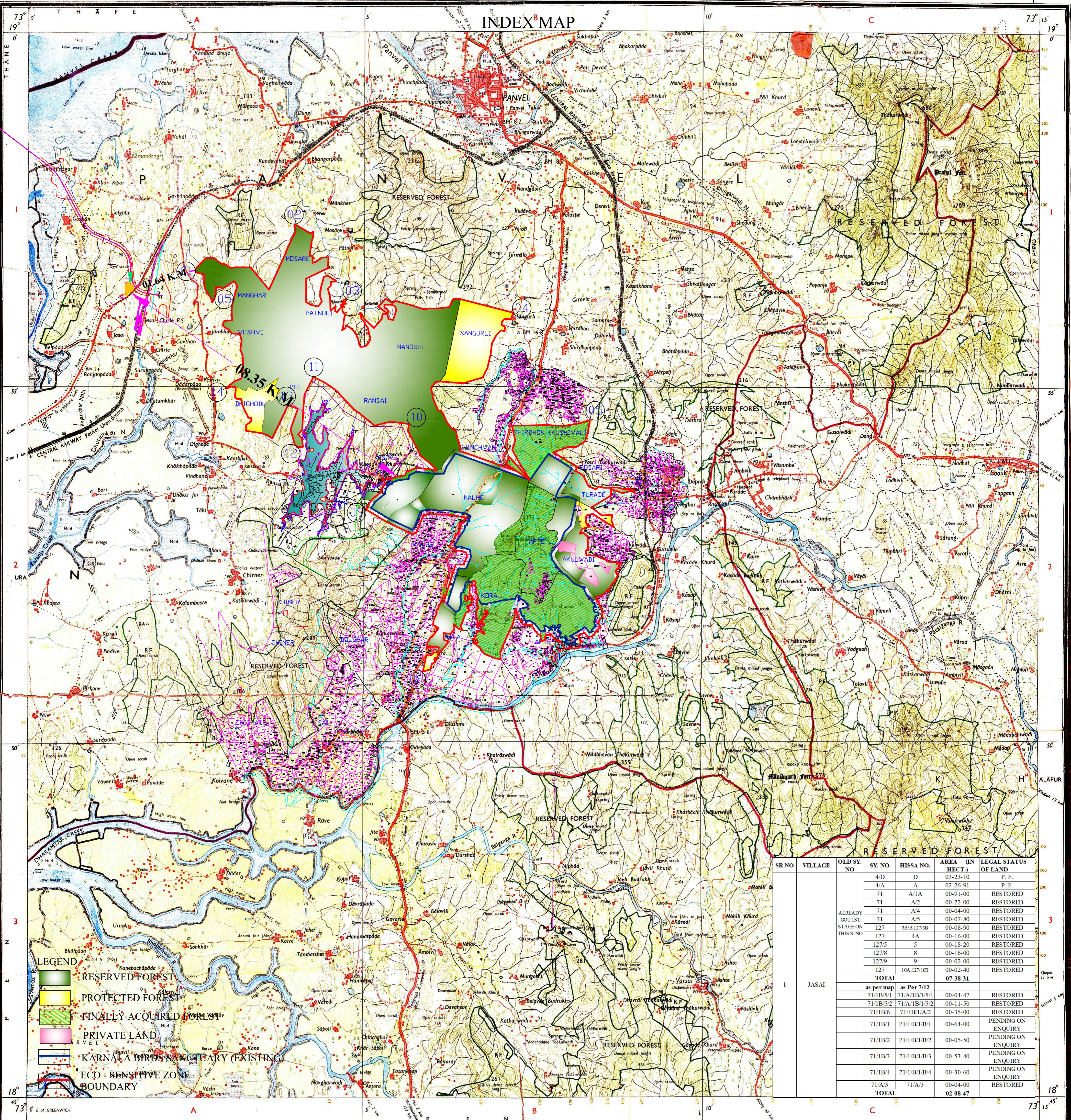
KULĀBA & THĀNE DISTRICTS.

Surveyed 1969-70, 1973-74
(Also see compilation index)

Projection from True North about 1° West in 1975.
(Annual change negligible)

No. 47 F

INDEX MAP



SR NO	VILLAGE	OLD SY. NO	SY. NO	HISSA NO.	AREA (IN HECT.)	LEGAL STATUS OF LAND		
1	JASAI	4D	D	03-23-10		P.F.		
		4A	A	02-26-91		P.F.		
		71	A/1A	00-91-00		RESTORED		
		71	A/2	00-22-00		RESTORED		
		71	A/4	00-04-00		RESTORED		
		71	A/5	00-07-80		RESTORED		
		127	3B/B/127/3B	00-08-90		RESTORED		
		127	4A	00-16-00		RESTORED		
		127/5	5	00-18-20		RESTORED		
		127/8	8	00-16-00		RESTORED		
		127/9	9	00-02-00		RESTORED		
		127	10A/127/10B	00-02-40		RESTORED		
		TOTAL					07-38-31	
		as per map as Per 7/12						
		71/B/5/1	71/A/B/5/1			00-04-47	RESTORED	
71/B/5/2	71/A/B/5/2			00-11-50	RESTORED			
71/B/6	71/B/1/A/2			00-35-00	RESTORED			
71/B/1	71/B/1/B/1			00-64-00	PENDING ON ENQUIRY			
71/B/2	71/B/1/B/2			00-05-50	PENDING ON ENQUIRY			
71/B/3	71/B/1/B/3			00-53-40	PENDING ON ENQUIRY			
71/B/4	71/B/1/B/4			00-30-60	PENDING ON ENQUIRY			
71/A/3	71/A/3			00-04-00	RESTORED			
TOTAL					02-08-47			

LEGEND

- RESERVED FOREST
- PROTECTED FOREST
- FINALLY ACQUIRED FOREST
- PRIVATE LAND
- KARNALA BIRDS SANCTUARY (EXISTING)
- ECO-SENSITIVE ZONE BOUNDARY

Scale: 1:50,000
SHEET 47 F/1 SECOND EDITION

REFER TO THIS MAP AS:- 1:50,000
SHEET 47 F/1 SECOND EDITION

INDIA भारत

Index to Sheets

47 A	47 B	47 C
47 D	47 E	47 F
47 G	47 H	47 I
47 J	47 K	47 L

Scale: 1:50,000

HEIGHTS & CONTOURS IN METRES
CONTOUR INTERVAL 20 METRES

Water features are shown in blue where they generally contain water. Cultivated areas are coloured yellow. The exterior boundaries of areas of Reserved or Protected Forests are shown by green ribands.

Contours are approximate. A relative height, H, represents the approximate height, in metres, between the top and bottom of a steep slope. Wooded areas are coloured green. Scattered trees and other vegetation are in green, but prominent surveyed areas are in black.

The triangulated heights and contours in this sheet have not been adjusted to the heights of the spirit-levelled bench-marks and may not be strictly in accordance with them. The kilometre stone numbers along roads and railways are shown in black type, e.g. '5' whereas milestone numbers are shown in upright type, e.g. '35'. All unmetalled roads and cart-tracks in this sheet are generally impassable in dry season. Ferries on Patalganga and Bhogeshwar Rivers only take pedestrian traffic. Tanks, shown dry, in this area usually contain water from July to October. The administrative boundaries in this sheet have been surveyed and pointed out by the local officials on the ground, but have not been verified by the District authorities.

REFERENCE
NH 4 National Highway No. 4

COMPILATION INDEX
A. Compiled from 1:50,000 Bombay Metropolitan Survey 1969-70
B. Compiled from 1:25,000 Survey 1973-74

Administrative Index

KULĀBA
THĀNE

PRINTED AT THE GOVT. PRINTING OFFICE OF MAHARASHTRA

Towns or Villages inhabited: deserted. Fort: ...
Hills: permanent: temporary: ...
Temples: Churches: Mosques: ...
Lighthouses: Lighthouses: ...
Mine: Vine on trellis: Grass: ...
Palms: palm-trees: other: ...
Boundary: international: ...
Boundary pillars surveyed: unlocated: village: ...
Heights: triangulated: station: point: approximate: ...
Bench-mark: geodetic: tertiary: canal: ...
Post office: Telegraph office: Combined office: Police station: ...
Banglows: dhokas or travellers': inspection: Rest-house: ...
Circus: houses: Camping ground: Forest: reserved: protected: ...
Speed names: administrative: locality or tribal: ...

GOVERNMENT OF INDIA COPYRIGHT, 1977.
Price: Five Rupees.

RESTRICTED
This map is NOT to be published, copied or reproduced in part or in whole either by photography or by any other means; should be kept in safe custody and handled by authorized persons only.