



NOT FOR EXPORT

OPEN SERIES  
MAP

No. H43R3

Scale 1:50,000

H43Q14 Karnal HARYANA	H43R2	Sahāranpur UTTAR PRADESH H43R6
H43Q15 Pānīpat HARYANA	H43R3	Muzaffarnagar UTTAR PRADESH H43R7
H43Q16 Sonīpat HARYANA	H43R4	Meerut UTTAR PRADESH H43R8

1 Bāghpat, UTTAR PRADESH.

भारतीय सर्वेक्षण विभाग

SURVEY OF INDIA

1st Edition 2007.

Price : Rs. 50/-

#### CONVENTIONAL SYMBOLS

Express Highway: with toll; with bridge; with distance stone		20
Roads, metalled: according to importance		
Roads, double carriageway: according to importance		
Unmetalled road, Cart-track, Pack-track with pass, Foot-path		
Streams: with track in bed; undefined, Canal		
Dams: masonry or rock-filled; earthwork, Weir		
River: dry with water channel; with island & rocks, Tidal river		
Submerged rocks, Shoal, Swamp, Reeds		
Wells: lined; unfired, Tube-well, Spring, Tanks: perennial; dry		
Embankments: road or rail; tank, Broken ground		
Railways, broad gauge: double; single with station; under constr.		
Railways, other gauges: double; single with distance stone; do		
Mineral line or tramway, Kils, Cutting with tunnel		
Contours with sub-features, Rocky slopes, Cliffs		
Sand features: (T)flat, (2)land-hills (permanent), (3)dundas(hifting)		
Towns or Villages: inhabited; deserted, Fort		
Huts: permanent; temporary, Tower, Antiquities		
Temples, Chhatris, Church, Mosque, Idgah, Tomb, Graves		
Lighthouse, Lighthouse, Buoy: lighted; unlighted, Anchorage		
Mine, Vine on trellis, Grass, Scrub		
Palms: palmyra; other, Plantain, Conifer, Bamboo, Other trees		
Areas: cultivated; wooded, Surveyed tree		
Boundary, International		
state: demarcated; undemarcated		
district: subdivided; taluk or taluk; forest		
Pillars: surveyed; unlocated; village trifunction		
Heights, triangulated; station; point; approximate		200 200 200
Bench-mark: geodetic; tertiary; canal		BM 63.3 BM 63.3
Post office, Telegraph office, Overhead tank		
Rest house or inspection bungalow, Circuit house, Police station		
Camping ground, Forest reserved; protected		
Speed names: administrative; locality or tribal		KIKRI R/F P/F
Hospital, Dispensary, Veterinary hospital		
Aerodrome, Helipad, Tourist site		
Power line: with pylons surveyed; with poles unsurveyed		

#### REFERENCE

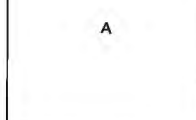
NH 1 National Highway No. 1

#### NOTES

Heights are in metres and above Indian mean sea level.  
Contours are approximate.  
Tanks, shown dry, in this area usually contain water from July to November.  
Tube-wells are numerous throughout the sheet, only the important ones have been shown.  
The area adjoining the Yamuna River is liable to change owing to continual fluctuation in the course of the river.  
A relative height e.g., 20, marked along a drain, indicates the height of the top of the drain embankment above the adjacent country.  
Unmetalled roads and cart-tracks along canals are motorable. Permission to use these is required from the irrigation authorities. Other cart-tracks and unmetalled roads are generally motorable in dry season.  
3,000-acre rectification stones of Bhakra Dam Project Surveys are shown as tertiary bench-marks thus: W 12 BM 226.1.

#### COMPILATION INDEX

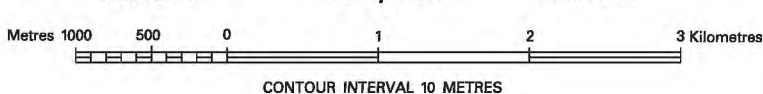
A Surveyed during 1990-91. Updated for major details during 2005-06.



Projection - UTM Datum - WGS 84

Magnetic Variation from True North about 3/4 East in 2000.  
(Increasing by about 2' annually).

1:50,000



CONTOUR INTERVAL 10 METRES

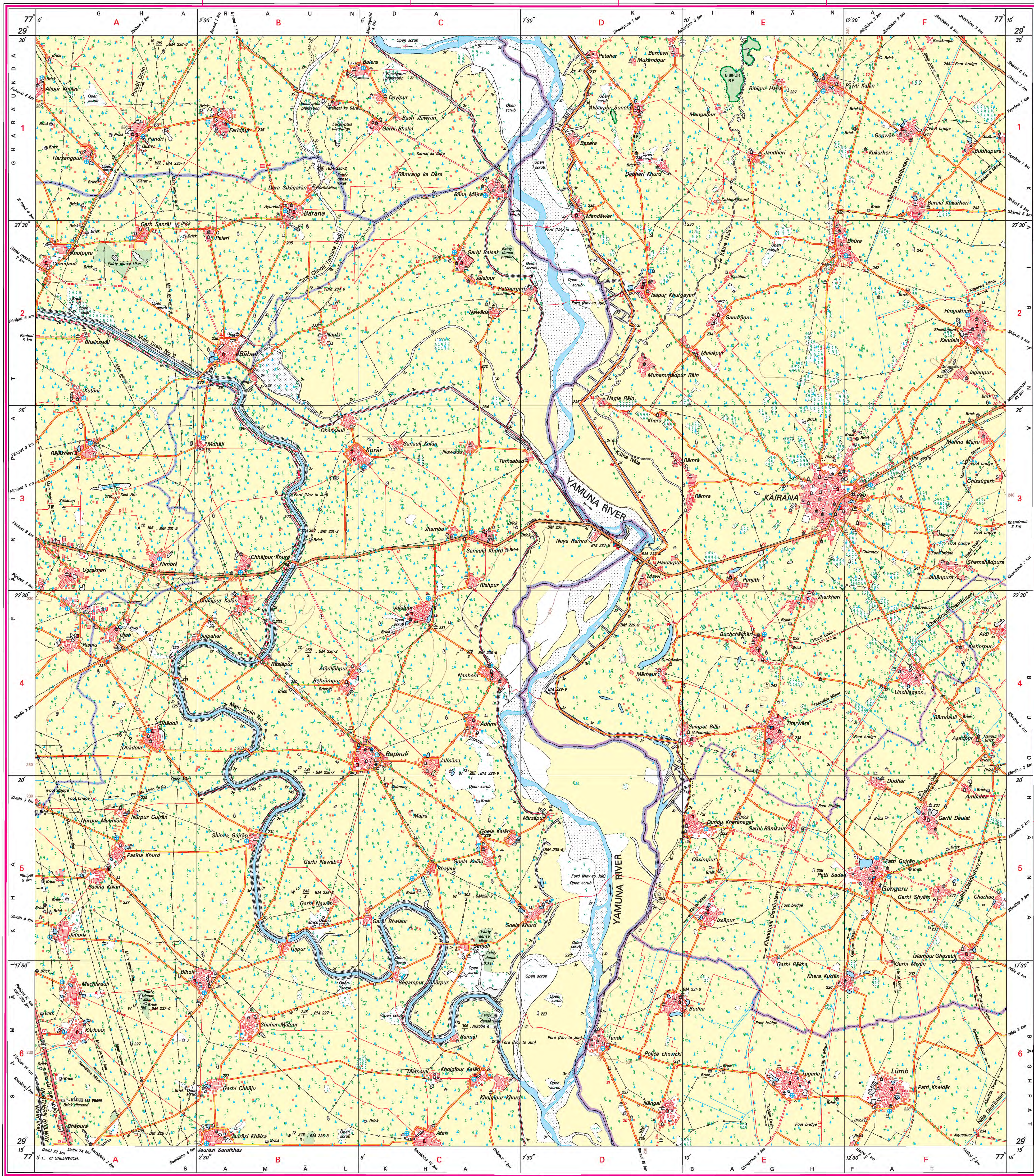
For further details about this map, please contact

Director  
Haryana Geo-Spatial Data Centre  
Survey of India, Sector 32 A  
Chandigarh.  
Fax : 0172 - 2604671

WEBSITE - [www.surveyofindia.gov.in](http://www.surveyofindia.gov.in)

Reproduction in whole or part by any means is prohibited  
without the written permission of Survey of India, the  
National Mapping Agency.

GOVERNMENT OF INDIA COPYRIGHT, 2007.



Res. No. -WPG D57 (Haryana GDC-150,000)-

भारत के नक्काशांक नेज़र जलल एम गेपल रण, बीट्टेड, वे डी डि (एरल फोटो), एमआरएएएएए, एमएएए, एडआरएएए, के डिज़ाइन में प्रस्तुत,  
Published under the direction of Major General M. Gopal Rao, P.G.Dip., P.G.Dip. (Aerial Photo), MME, MCA, FIS, Surveyor General of India,  
Survey of India, Hathi Barkala Estate, Post Box No. 37, Dehra Dun - 248001 (Uttarakhand)  
Department of Science & Technology, Government of India.

PRINTED AT THE WESTERN PRINTING GROUP OF SURVEY OF INDIA.