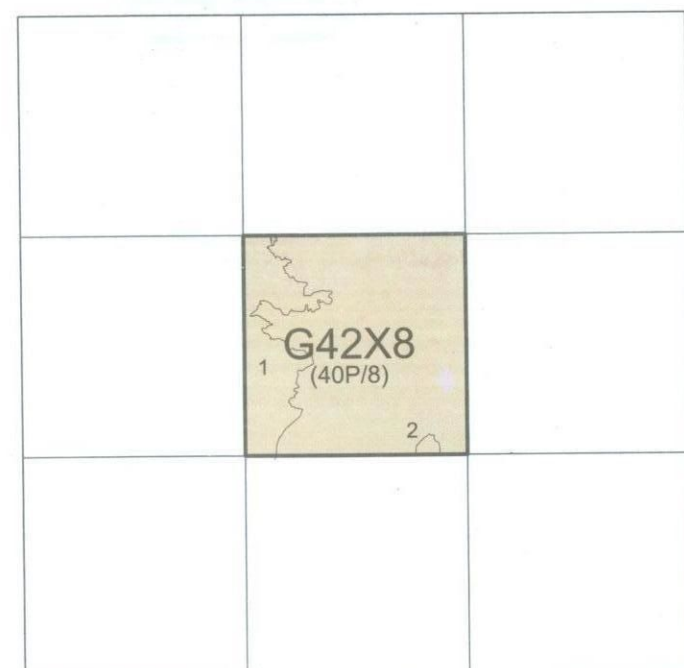


No. G42X8

Scale 1:50,000



1 Kachchh, GUJARAT.
2 Patan, GUJARAT.

भारतीय सर्वेक्षण विभाग SURVEY OF INDIA

1st Edition 2011. Price: Rs.118/-

CONVENTIONAL SYMBOLS

- Express highway, with toll; with bridge; with distance stone
- Roads, metalled; according to importance
- Unmetalled road. Cart-track. Pack-track with pass. Foot-path
- Streams: with track in bed; undefined. Canal
- Dams: masonry or rock-filled; earthwork. Weir
- River: dry with water channel; with island & rocks. Tidal river
- Submerged rocks. Shoal. Swamp. Reeds
- Wells: lined; unlined. Tube-well. Spring. Tanks: perennial; dry
- Embankments: road or rail; tank. Broken ground
- Railways: broad gauge; double; single with station; under constm.
- Railways, other gauges: double; single with distance stone; do
- Mineral line or tramway. Kin. Cutting with tunnel
- Contours with sub-features: Rocky slopes. Cliffs
- Sand features: (1)flat. (2)sand-hills(permanent). (3)dunes(shifting)
- Towns or Villages: inhabited; deserted. Fort
- Huts: permanent; temporary. Tower. Antiquities
- Temple. Chhatra. Church. Mosque. Idgah. Tomb. Graves
- Lighthouse. Lightship. Buoys: lighted; unlighted. Anchorage
- Mine. Vine on trellis. Grass. Scrub
- Palms: palmyra; other. Plantain. Conifer. Bamboo. Other trees
- Areas: cultivated; wooded. Surveyed tree
- Boundary, international
- state: demarcated; undemarcated
- district; subdivision; tahsil or taluk; forest
- Boundary pillars: surveyed; unlocated
- Heights, triangulated: station; point; approximate
- Bench-mark: geodetic; tertiary; canal
- Post office. Overhead tank
- Rest house or inspection bungalow. Circuit house. Police station
- Camping ground. Forest: reserved; protected
- Spaced names: administrative; locality or tribal
- Hospital. Dispensary. Veterinary Hospital / Dispensary
- Aerodrome. Helipad. Tourist site
- Power line: with pylons surveyed; with poles unsurveyed

REFERENCE

NH 15 National Highway No.15.

NOTES :-

Heights and Contours have not been shown.
A relative height e.g., 5r, represents the approximate height, in metres, between the top and bottom of a steep slope.
The area of Rann of Kachchh is not included in any taluk but is a part of Kachchh District.
Tanks, shown dry, in this area usually contain water from July to December.
Cultivation is periodic and dependent on rainfall.

COMPILATION INDEX

A. Surveyed during 1992-93. Updated for major details during 2006-07.



Projection - UTM Datum - WGS 84

Magnetic Variation from True North about 0° in 2005.
(Increasing by about 1° East annually).

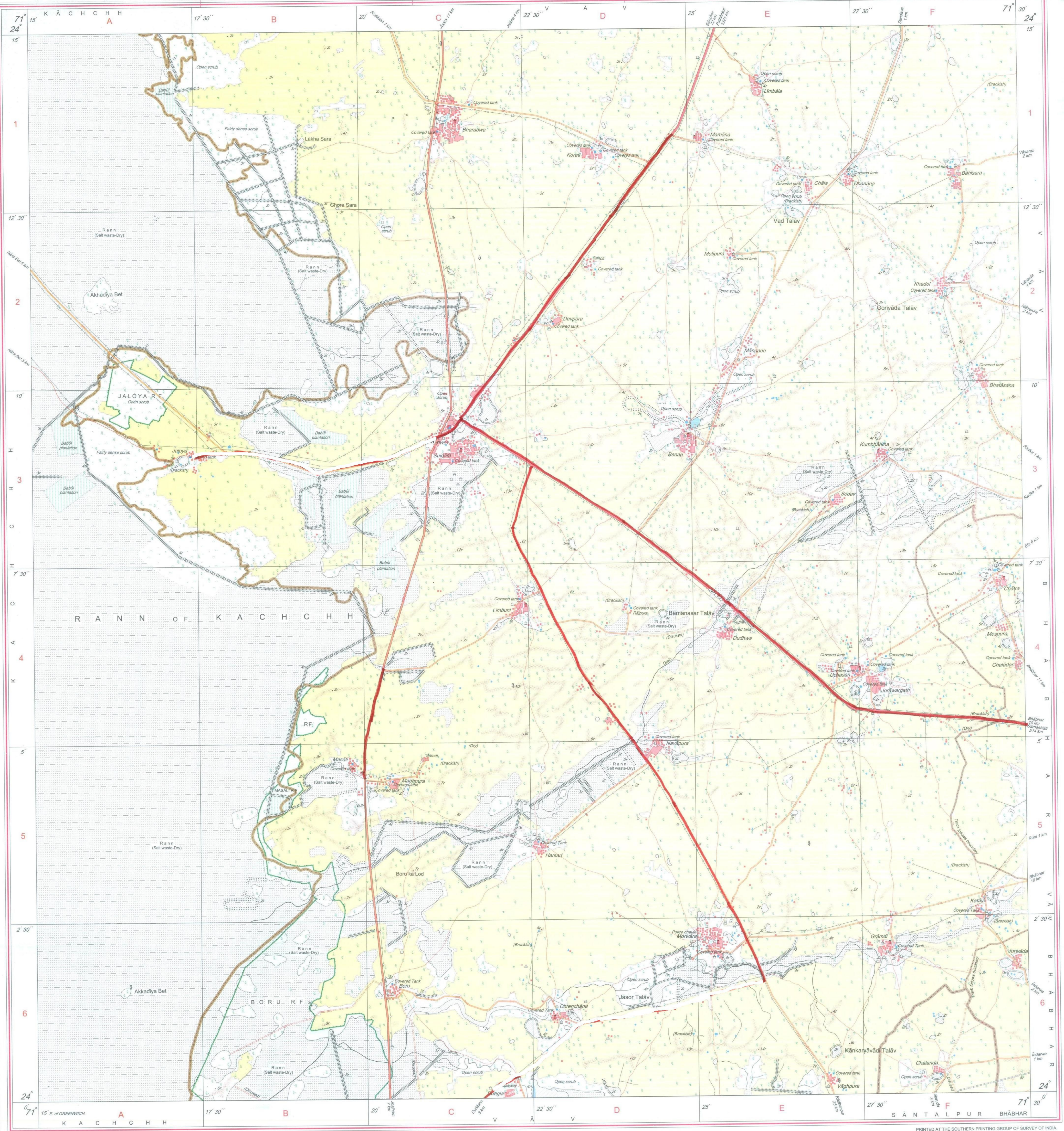
1:50,000



For further details about this map, please contact
Director
Gujarat, Damam & Diu Geo-Spatial Data Centre
Survey of India, Sector-10(A)
Gandhinagar.

WEBSITE - www.surveyofindia.gov.in

Reproduction in whole or part by any means is prohibited without the written permission of Survey of India, the National Mapping Agency.



REG. No. 907-SPG D 12 (G D & D GDC-1:50,000)-1508 '15.

भारत के महासर्वेक्षक राजेन्द्र नारायण त्रिपाठी, एमएससी (सिफिस), पीजीडिप्लोमा (कार्टो) (आईटीसी गैरलेखन) के निदेश से प्रकाशित.
Published under the direction of Rajendra Mani Tripathi, M.Sc. (Physics), P.G. Diploma (Carto) (ITC, The Netherlands) Surveyor General of India,
Survey of India, Haidibanka Estate, Post Box No. 37, Dehra Dun - 248001 (Uttarakhand),
Department of Science & Technology, Government of India.

PRINTED AT THE SOUTHERN PRINTING GROUP OF SURVEY OF INDIA.

सर्वेक्षण के लिए नहीं

NOT FOR EXPORT

OPEN SERIES

MAP

No. G42X12

Scale 1:50,000

G42X7 (40P/7)	G42X11 (40P/11)	G42X15 (40P/15)
G42X8 (40P/8)	Banās Kāntha GUJARĀT G42X12 (40P/12)	G42X16 (40P/16)
F42F5 (41M/5)	F42F9 (41M/9) Pāṭan GUJARĀT	F42F13 (41M/13)

1 Kachchh, GUJARĀT.

भारतीय सर्वेक्षण विभाग

SURVEY OF INDIA

1st Edition 2011.

Price: Rs.118/-

CONVENTIONAL SYMBOLS

Express highway: with toll; with bridge; with distance stone

Roads, metalled: according to importance

Roads, double cartage-way: according to importance

Unmetalled road. Cart-track. Pack-track with pass. Foot-path

Streams: with track in bed; undefined. Canal

Dams: masonry or rock-filled; earthwork. Weir

River: dry with water channel; with island & rocks. Tidal river

Submerged rocks. Shoal. Swamp. Reeds

Wells: lined; unlined. Tube-well. Spring. Tanks: perennial; dry

Embankments: road or rail; tank. Broken ground

Railways, broad gauge: double; single with station; under constn

Railways, other gauges: double; single with distance stone; do

Mineral line or tramway. Kīn. Cutting with tunnel

Contours with sub-features. Rocky slopes. Cliffs

Sand features: (1)flat. (2)sand-hills(permanent). (3)dunes(shifting)

Towns or Villages: inhabited; deserted. Fort

Huts: permanent; temporary. Tower. Antiquities

Temple. Chhatra. Church. Mosque. Idgāh. Tomb. Graves

Lighthouse. Lightship. Buoys: lighted; unlighted. Anchorage

Mine. Vine on trellis. Grass. Scrub

Palms: palmyra; other. Plantain. Conifer. Bamboo. Other trees

Areas: cultivated; wooded. Surveyed tree

Boundary, international

state: demarcated; undemarcated

district: subdivision; tahsil or taluk; forest

Boundary pillars: surveyed; unlocated

Heights, triangulated: station; point; approximate

Bench-mark: geodetic; tertiary; canal

Post office. Overhead tank

Rest house or inspection bungalow. Circuit house. Police station

Camping ground. Forest: reserved; protected

Spaced names: administrative; locality or tribal

Hospital. Dispensary. Veterinary: Hospital / Dispensary

Aerodrome. Helipad. Tourist site

Power line: with pylons surveyed; with poles unsurveyed

REFERENCE

HY 15 National Highway No. 15.

NOTES :-

Heights and Contours have not been shown.

A relative height, .sr., represents the approximate height, in metres, between the top and bottom of a steep slope.

Limits of cultivation are variable and dependent on rainfall.

Tank, shown dry, in this area usually contain water from July to September.

Cart-tracks in this sheet, against which there is no descriptive, remark are generally motorable (four-wheel drive) in dry season.

COMPILED INDEX

A. Surveyed during 1986-87. Updated for major details during 2006-07.

Projection - UTM Datum - WGS 84

Magnetic Variation from True North about 0° in 2005.

(Increasing by about 1° East annually).

1:50,000

500 m to 1 cm

2 cm to 1 km

Metres 1000 500 0 1 2 3 Kilometres

For further details about this map, please contact

Director

Gujarat, Damān & Diu Geo-Spatial Data Centre

Survey of India, Sector -10 (A)

Gāndhinagar.

WEBSITE - www.surveyofindia.gov.in

Reproduction in whole or part by any means is prohibited

without the written permission of Survey of India, the

National Mapping Agency.

REG. No. 913-SFG D°12(GD & D GDC:1:50,000)-1508°15.

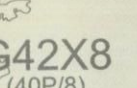
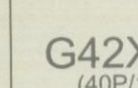
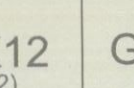
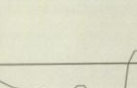
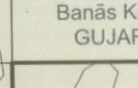
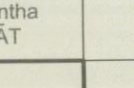
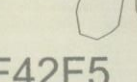
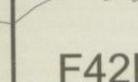

भारत के महासर्वेक्षण राजेन्द्र मणि त्रिपाठी, एमएससी (फिजिक्स), पीजीडिप्लोमा (कार्टो) (आईटीसी नैचुरल साइंस) के निदेशन में प्रकाशित,
Published under the direction of Rajendra Mani Tripathi, M.Sc. (Physics), P.G. Diploma (Carto) (ITC, The Netherlands) Surveyor General of India,
Survey of India, Hithibarkala Estate, Post Box No. 37, Dehra Dun - 248001 (Uttarakhand),
Department of Science & Technology, Government of India.

PRINTED AT THE SOUTHERN PRINTING GROUP OF SURVEY OF INDIA.

GOVERNMENT OF INDIA COPYRIGHT, 2011.



Scale 1:50,000

 G42X8 (40P/8) 3	 G42X12 (40P/12) Banās Kāntha GUJARĀT	 G42X16 (40P/16)
 F42F5 (41M/5)	 F42F9 (41M/9) Pāṭan GUJARĀT	 F42F13 (41M/13)
 F42F6 (41M/6) 3	 F42F10 (41M/10)	 F42F14 (41M/14)

1. Mehesāna, GUJARĀT
2. Surendrānagar, GUJARĀT
3. Kachchh, GUJARĀT

भारतीय सर्वेक्षण विभाग

SURVEY OF INDIA

1st Edition 2011.

Price : Rs. 118/-

CONVENTIONAL SYMBOLS

Express highway with toll bridge; with distance stone			
Roads, detailed: according to importance			
Roads, double carriageway: according to importance			
Unmetalled road. Cart-track. Pack-track with pass. Foot-path			
Streams: with track in bed; underfilled. Canal			
Dams: masonry or rock-filled; earthenwork. Weir			
River: with water channel; with island & rocks. Tidal river			
Submerged rocks. Shoal. Swamp. Reeds			
Wells: lined; unlined. Tube-well. Spring. Tank; perennial; dry			
Embankments: road or rail; tank. Broken ground			
Railways, broad gauge; double; single with station; under constr.			
Railways, other gauges; double; single with distance stone; do.			
Mineral line or tramway. Kilm. Cutting with tunnel			
Contours with surveying, Rocky slopes, Cliffs			
Sea features: (1) flat. (2) sand-tails (permanent). (3) dunes (shifting)			
Towns or Villages: inhabited; deserted. Fort.			
Huts: permanent; temporary. Tower. Antiquities			
Temple. Chhatrai. Church. Mosque. Idgah. Tomb. Graves			
Lighthouse. Lightship. Buoys: lighted; unlighted. Anchorage			
Mine. Vine on trellis. Grass. Scrub			
Palms: palmyra; other. Plantain. Conifer. Bamboo. Other trees			
Aras: cultivated; wooded. Surveyed tree			
Boundary, international			
state; demarcated; undemarcated			
district; subdivision; taluk or iluk; forest			
Boundary pillars: surveyed; unlocated			
Heights, triangulated: station; point; approximate			
Bench-mark: geodetic; levelling; canal			
Post office. Overhead tank			
Rest house or inspection bungalow. Circuit house. Police station			
Camping ground. Forest: reserved; protected			
Spaced names: administrative; locality or tribal			
Hospital. Dispensary. Veterinary: hospital / Dispensary			
Aerodrome. Helipad. Tourist site			
Power line: with pylons surveyed; with poles unsurveyed			

REFERENCE

NH 15 National Highway No. 15

NOTES :-

Contours and heights have not been shown.

A relative height, e.g., δr , represents the approximate height, in metres, between the top and bottom of a steep slope.

A relative height, e.g., δr , marked along a canal, indicates the height of the top of the canal embankment above the adjacent country.

Tanks, shown dry, in this area usually contain water from July to February.

Cactus hedges generally exist along cart-tracks and field bunds.

Cultivation is periodic and dependent on rainfall.

COMPILATION INDEX

A. Surveyed during 1986-87. Updation for major details during 2006-07.

Projection - UTM Datum - WGS 84

Magnetic Variation from True North about 0° in 2005.

1:50,000

Meters: 1000	500	0	1	2	3 Kilometres
--------------	-----	---	---	---	--------------

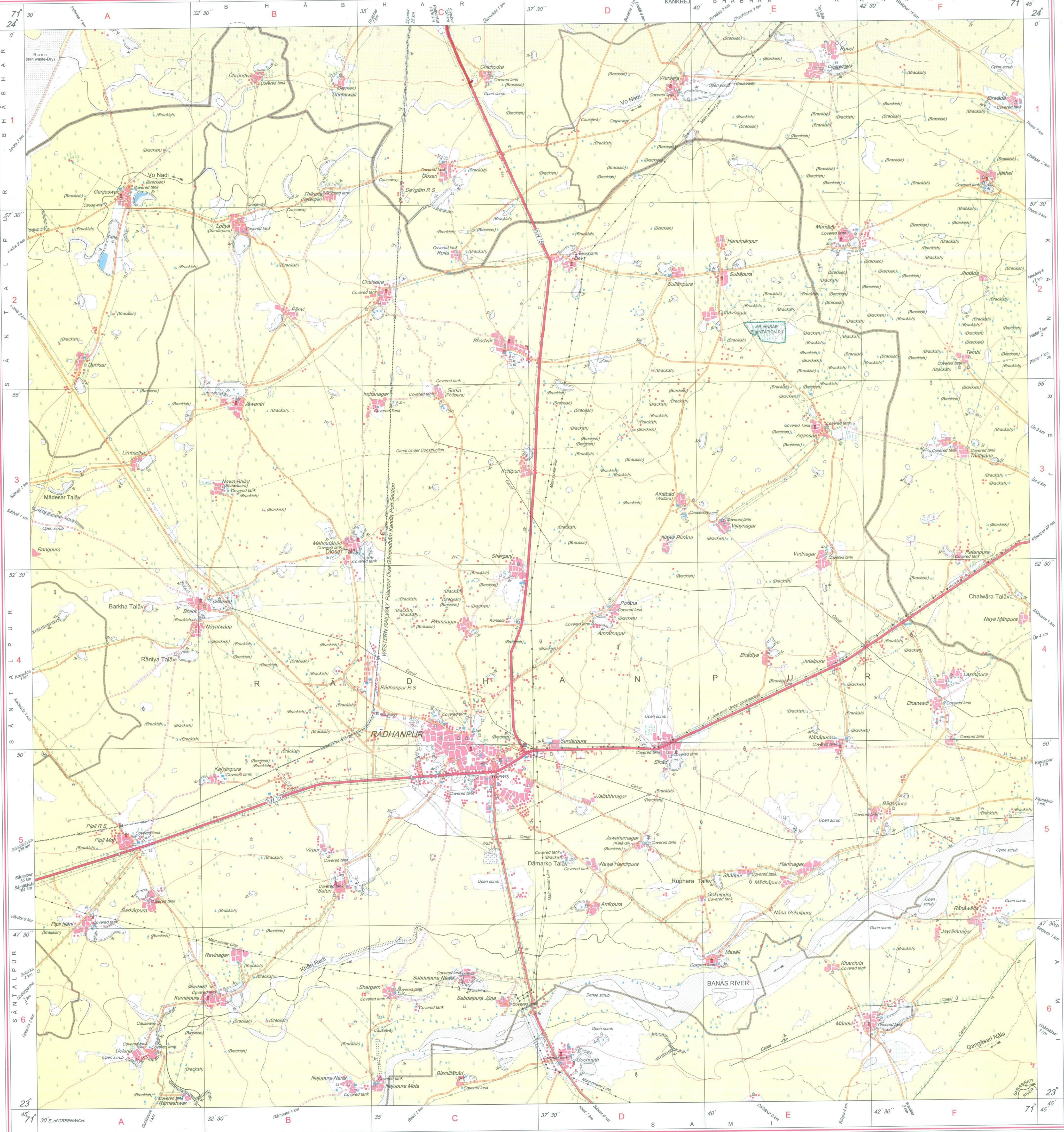
For further details about this map, please contact

Gujarāt, Damān & Diu Geo-Spatial Data Centre
Survey of India, Sector-10(A)
Gāndhīnagar.

WEBSITE - www.surveyofindia.gov.in

Reproduction in whole or part by any means is prohibited without the written permission of Survey of India, the National Mapping Agency.

GOVERNMENT OF INDIA COPYRIGHT, 2011.



REG. No. 9672-SPG D '11 (GD & D GDC-1:50,000)-1508 '15.

भारत के महासर्वेक्षक राजेन्द्र मणि त्रिपाठी, एम.एस.सी. (फिजिक्स), पी.जी.डिप्लोमा (कार्टो) (आईटीसी. नीदरलैंड्स) के निवेदन से प्रकाशित.
Published under the direction of Rajendra Mani Tripathi, M.Sc. (Physics), P.G. Diploma (Carto) (ITC, The Netherlands) Surveyor General of India
Survey of India, Hāthibarkala Estate, Post Box No. 37, Dehra Dūn - 248001 (Uttarākhānd),
Department of Science & Technology, Government of India.

PRINTED AT THE SOUTHERN PRINTING GROUP OF SURVEY OF INDIA