



INDIA  
REFER TO THIS MAP AS 1:25,000  
SHEET 63 P/10/NE FIRST EDITION

FIRST EDITION

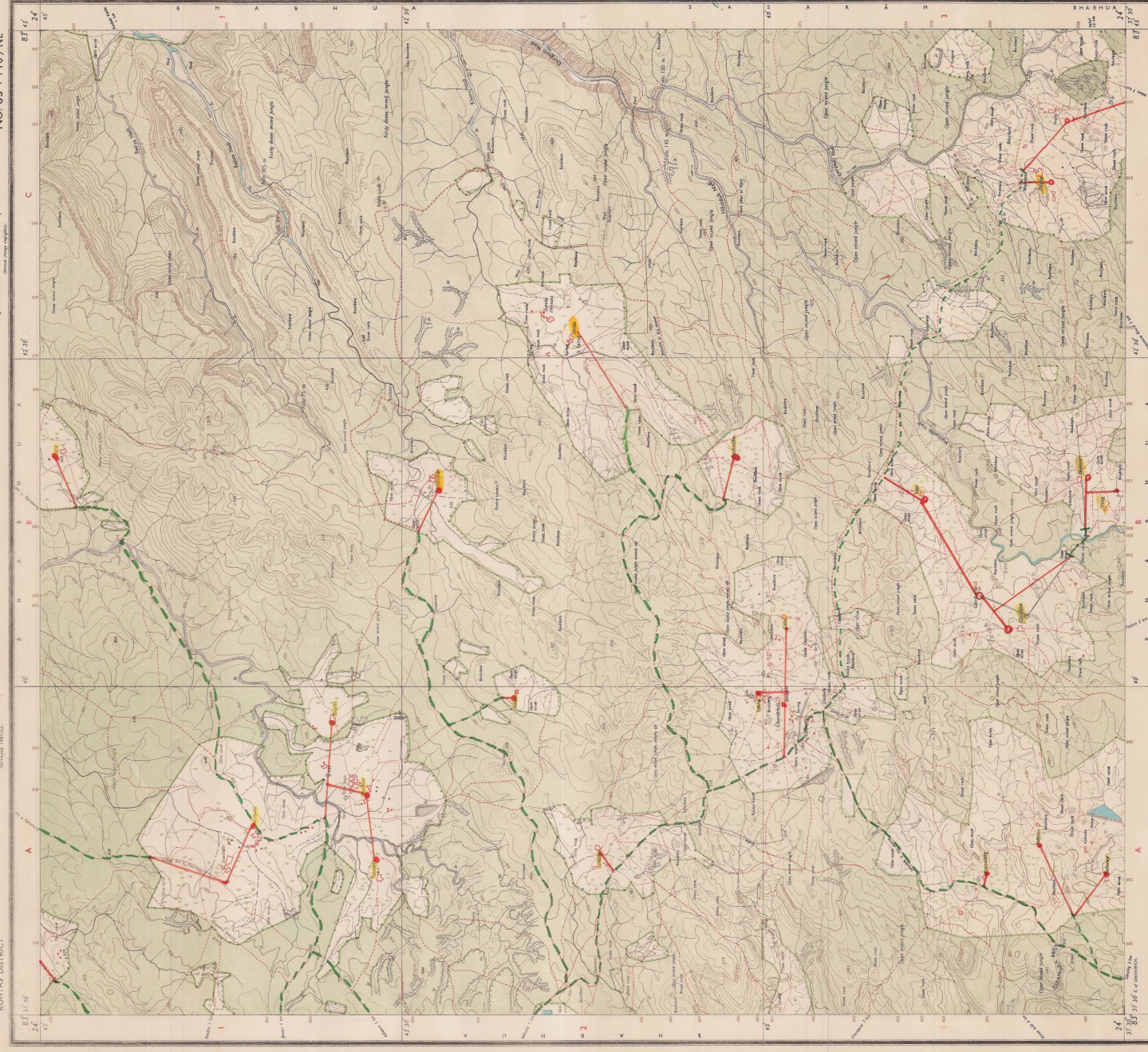
NO. 63 P 10 / NE

Magnetic Variation from True North where  $\frac{1}{2}$  West in 1955.  
Annual magnetic variation.

बिहार  
BIHAR

Bohtas District

BOHTAS DISTRICT



Scale of Distances  
1:25,000  
1 cm = 250 m  
1 inch = 6,350 ft

HEIGHTS & CONTOURS IN METRES  
CONTOUR INTERVAL IN METRES  
Contours are approximate.  
Contours are not shown in the case of a steep slope.  
Contours are not shown in the case of a steep slope.  
Contours are not shown in the case of a steep slope.

INDEX TO SHEETS  
63 P/10/NE 63 P/10/NE 63 P/10/NE  
63 P/10/NE 63 P/10/NE 63 P/10/NE  
63 P/10/NE 63 P/10/NE 63 P/10/NE

INDIA  
REFER TO THIS MAP AS 1:25,000  
SHEET 63 P/10/NE FIRST EDITION

Administrative Units  
Bohtas

Scale of Distances  
1:25,000  
1 cm = 250 m  
1 inch = 6,350 ft

HEIGHTS & CONTOURS IN METRES  
CONTOUR INTERVAL IN METRES  
Contours are approximate.  
Contours are not shown in the case of a steep slope.  
Contours are not shown in the case of a steep slope.  
Contours are not shown in the case of a steep slope.

INDEX TO SHEETS  
63 P/10/NE 63 P/10/NE 63 P/10/NE  
63 P/10/NE 63 P/10/NE 63 P/10/NE  
63 P/10/NE 63 P/10/NE 63 P/10/NE

INDIA  
REFER TO THIS MAP AS 1:25,000  
SHEET 63 P/10/NE FIRST EDITION

© GOVERNMENT OF INDIA COPYRIGHT, 1955  
First Edition 1955  
Revised Edition  
Revised 1955

INDIA  
REFER TO THIS MAP AS  
SHEET 87/3 FIRST EDITION  
1:50,000

FIRST EDITION

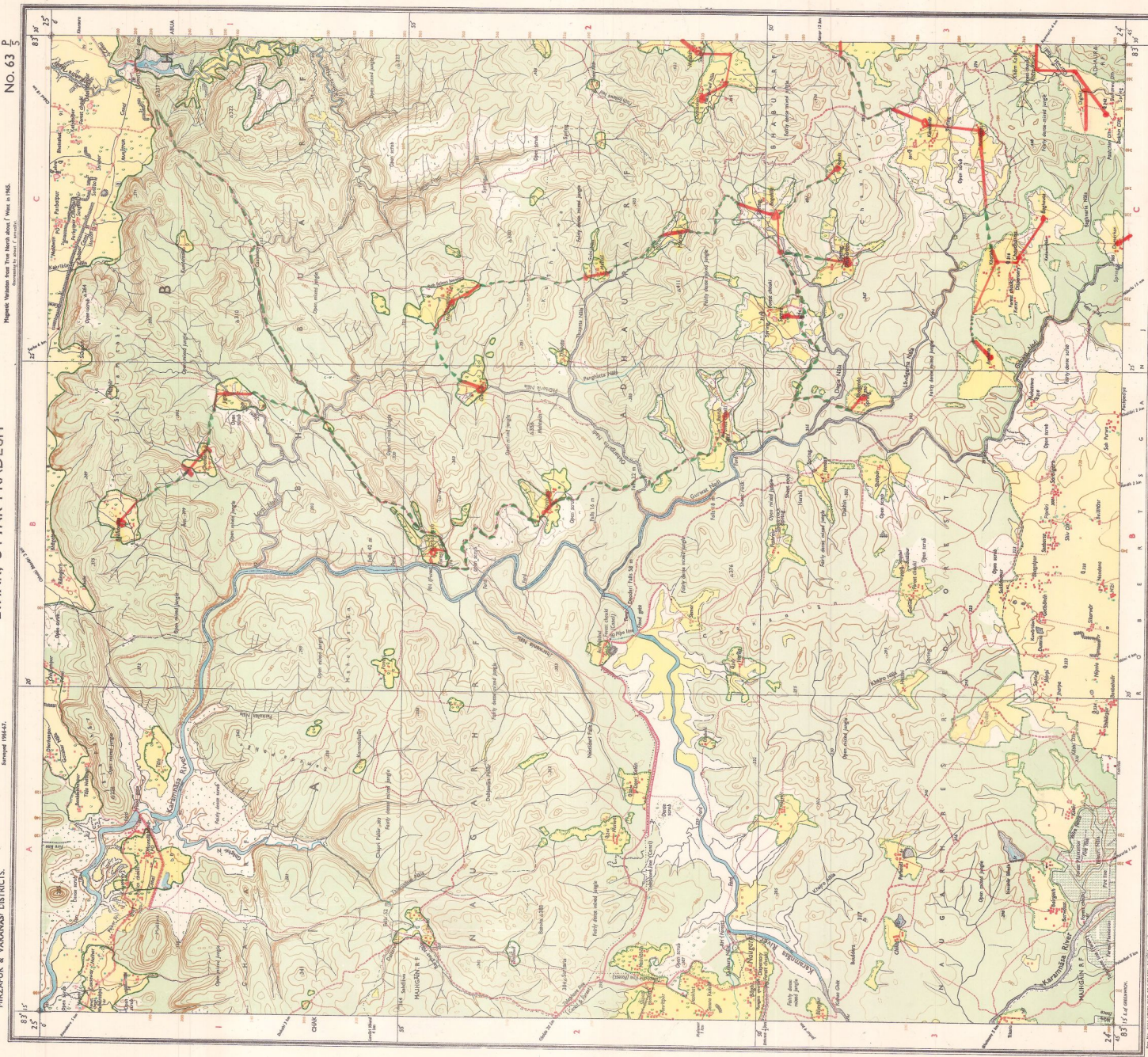
# BIHAR, UTTAR PRADESH

Survey No. 19442

बिहार के लिए नहीं NOT FOR EXPORT  
BHOJPUR DISTRICT,  
MUNSIER & VARANASI DISTRICTS.

No. 63 P

Fragment: Madras Area True North about 7 West in 1956.  
According to sheet C 10000



Scale in Kilometres

Scale in Miles

1:50,000

HEIGHTS & CONTOURS IN METRES  
CONTOUR INTERVAL, 20 METRES

Water features are shown in blue. The greater the depth, the darker the blue. Shaded relief is used to show the general character of the terrain. Contours are shown in brown. The contour interval is 20 metres. The highest contour shown is 200 metres. The lowest contour shown is 100 metres. The map is based on the Survey of India's contour map of Bihar and Uttar Pradesh, 1956.

Scale in Kilometres

Scale in Miles

1:50,000

HEIGHTS & CONTOURS IN METRES  
CONTOUR INTERVAL, 20 METRES

Water features are shown in blue. The greater the depth, the darker the blue. Shaded relief is used to show the general character of the terrain. Contours are shown in brown. The contour interval is 20 metres. The highest contour shown is 200 metres. The lowest contour shown is 100 metres. The map is based on the Survey of India's contour map of Bihar and Uttar Pradesh, 1956.

Scale in Kilometres

Scale in Miles

1:50,000

HEIGHTS & CONTOURS IN METRES  
CONTOUR INTERVAL, 20 METRES

Water features are shown in blue. The greater the depth, the darker the blue. Shaded relief is used to show the general character of the terrain. Contours are shown in brown. The contour interval is 20 metres. The highest contour shown is 200 metres. The lowest contour shown is 100 metres. The map is based on the Survey of India's contour map of Bihar and Uttar Pradesh, 1956.

Scale in Kilometres

Scale in Miles

1:50,000

HEIGHTS & CONTOURS IN METRES  
CONTOUR INTERVAL, 20 METRES

Water features are shown in blue. The greater the depth, the darker the blue. Shaded relief is used to show the general character of the terrain. Contours are shown in brown. The contour interval is 20 metres. The highest contour shown is 200 metres. The lowest contour shown is 100 metres. The map is based on the Survey of India's contour map of Bihar and Uttar Pradesh, 1956.

Scale in Kilometres

Scale in Miles

1:50,000

HEIGHTS & CONTOURS IN METRES  
CONTOUR INTERVAL, 20 METRES

Water features are shown in blue. The greater the depth, the darker the blue. Shaded relief is used to show the general character of the terrain. Contours are shown in brown. The contour interval is 20 metres. The highest contour shown is 200 metres. The lowest contour shown is 100 metres. The map is based on the Survey of India's contour map of Bihar and Uttar Pradesh, 1956.

Scale in Kilometres

Scale in Miles

1:50,000

HEIGHTS & CONTOURS IN METRES  
CONTOUR INTERVAL, 20 METRES

Water features are shown in blue. The greater the depth, the darker the blue. Shaded relief is used to show the general character of the terrain. Contours are shown in brown. The contour interval is 20 metres. The highest contour shown is 200 metres. The lowest contour shown is 100 metres. The map is based on the Survey of India's contour map of Bihar and Uttar Pradesh, 1956.

INDIA  
REFER TO THIS MAP AS  
SHEET 87/3 FIRST EDITION  
1:50,000

FIRST EDITION

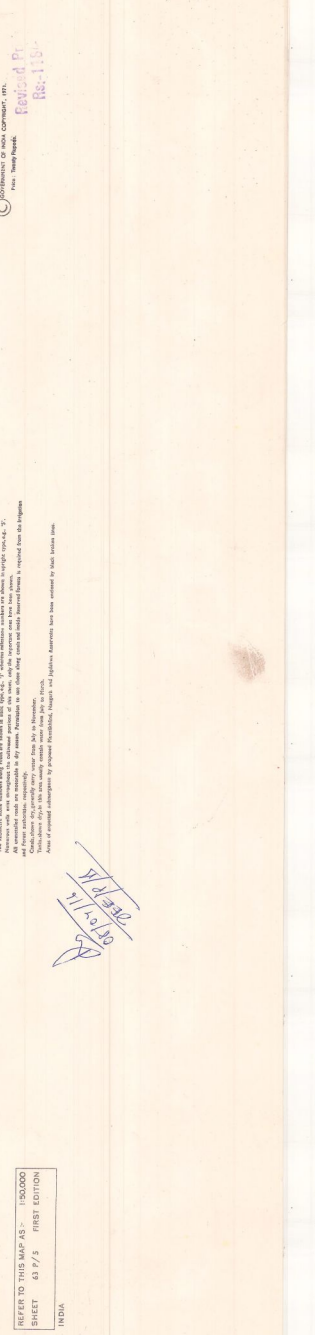
# BIHAR, UTTAR PRADESH

Survey No. 19442

बिहार के लिए नहीं NOT FOR EXPORT  
BHOJPUR DISTRICT,  
MUNSIER & VARANASI DISTRICTS.

No. 63 P

Fragment: Madras Area True North about 7 West in 1956.  
According to sheet C 10000



INDIA  
REFER TO THIS MAP AS  
SHEET 87/3 FIRST EDITION  
1:50,000

FIRST EDITION

# BIHAR, UTTAR PRADESH

Survey No. 19442

बिहार के लिए नहीं NOT FOR EXPORT  
BHOJPUR DISTRICT,  
MUNSIER & VARANASI DISTRICTS.

No. 63 P

Fragment: Madras Area True North about 7 West in 1956.  
According to sheet C 10000

**No. G44X9**  
 Scale 1:50,000

G44R8 (83018)	G44R12 (83012)	G44R16 (83016)
G44X5 (83015)	<b>G44X9 (83019)</b>	G44X13 (83013)
G44X6 (83016)	G44X10 (83010)	G44X14 (83014)

UTTAR PRADESH  
 1 Azamgarh, 2 Ballia, 3 Bahraich, 4 Chandernagore, 5 Faizabad, 6 Ghazipur, 7 Gorakhpur, 8 Lucknow, 9 Mirzapur, 10 Prayagraj, 11 Raebareilly, 12 Saharanpur, 13 Shrawastipur, 14 Unnao

भारतीय सर्वेक्षण विभाग SURVEY OF INDIA  
 1st Edition 2011. Price: Rs. 70/-

**CONVENTIONAL SYMBOLS**

Express high-way with toll, with bridge, with distance stone	
Road, double carriage-way, according to importance	
Unsurfaced road, Cart-track, Path, track with pass, Foot-path	
Stream with bank, bank, washed, canal	
Ditch, masonry or rock-lined, earthen, with	
Flood plain with water channel, with bank & ridge, Tidal river	
Artificially made canal, drainage, head	
Water bound, unflooded, Tidal, wet, Spring, Tidal, perennial, dry	
Embankment, road or rail, bank, Dikes, ground	
Railways, broad gauge, double, single, with station, with water, with telegraph	
Railways, other gauges, double, single, with distance stone, etc.	
Mixed line or tramway, etc., Carriage with basket	
Cableway with station, Road, river, etc.	
Sand features (Dunes, Sand-dunes, etc.)	
Towns or Villages, fortified, distance, Fort	
Habitations, permanent, temporary, Tent, etc.	
Temples, Church, Mosque, High, Tank, Green	
Lighthouses, Lightships, Beacon, Signal, windmill, Antenna	
Mark, tree, or other, tree, Rock	
Palms, papyrus, other, Pines, Cacti, Bamboos, Other trees	
Animal, cultivated, wooded, Barren, etc.	
Boundary, international	
Water, dammed, undammed	
Electric, substation, tank, or other, tank	
Boundary, other, complete, etc.	
Height, triangulation, spot, approximate	
Benches, gas, water, railway, canal	
Post, other, Height, etc., etc.	
Rail house or boundary, boundary, Canal, bank, Public, etc.	
Courtyard, ground, Forest, reserved, protected	
Spotted, center, administrative, locality, or other	
Hospital, Dispensary, Veterinary, Hospital, Dispensary	
Asylum, Hospital, Tourist, etc.	
Power line with poles, complete, with poles, etc.	

**NOTES**  
 Heights are in meters and shown in black on the map.  
 Contour interval is 20 meters.  
 The above data numbers along roads are shown in black type, e.g., '2' on road numbers are shown in black type, e.g., '2'.

**COMPLETION INDEX**  
 A Surveyed during 1980-87. Updated for major details during 2008-09.

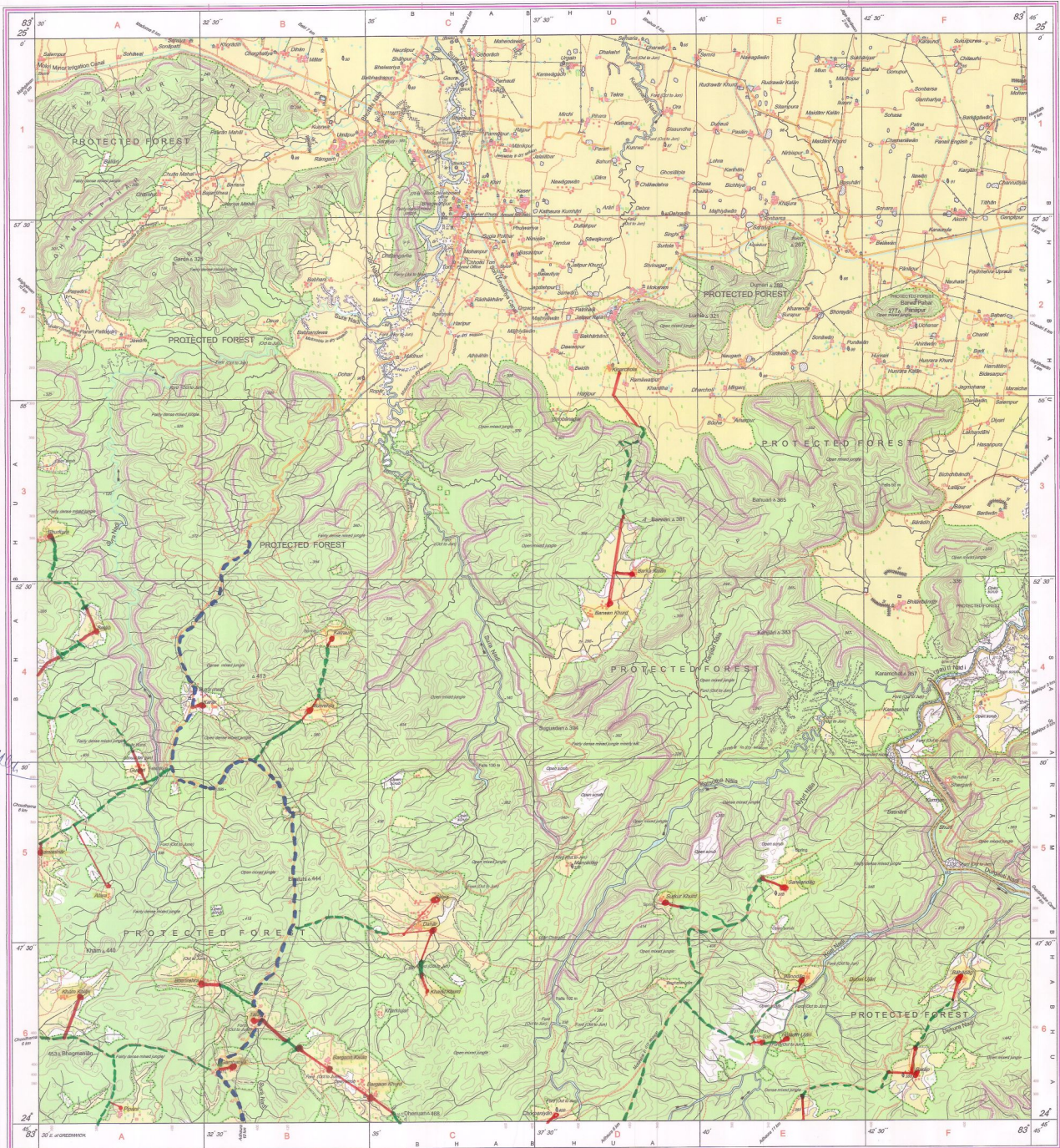
Projection - UTM Datum - WGS 84  
 Magnetic Variation from True North about 4° West in 2008.  
 (Decreasing by about 1° annually.)

Scale 1:50,000  
 1 cm = 500 m  
 1 inch = 12.5 miles

CONTOUR INTERVAL 20 METRES

For further details about this map, please contact  
 Director  
 Bihar Geo-Topical Data Centre  
 Survey of India, 164, Shaheed Bhagat Singh Road, Patna.

WEBSITE: www.surveyofindia.gov.in









BIHAR

FIRST EDITION

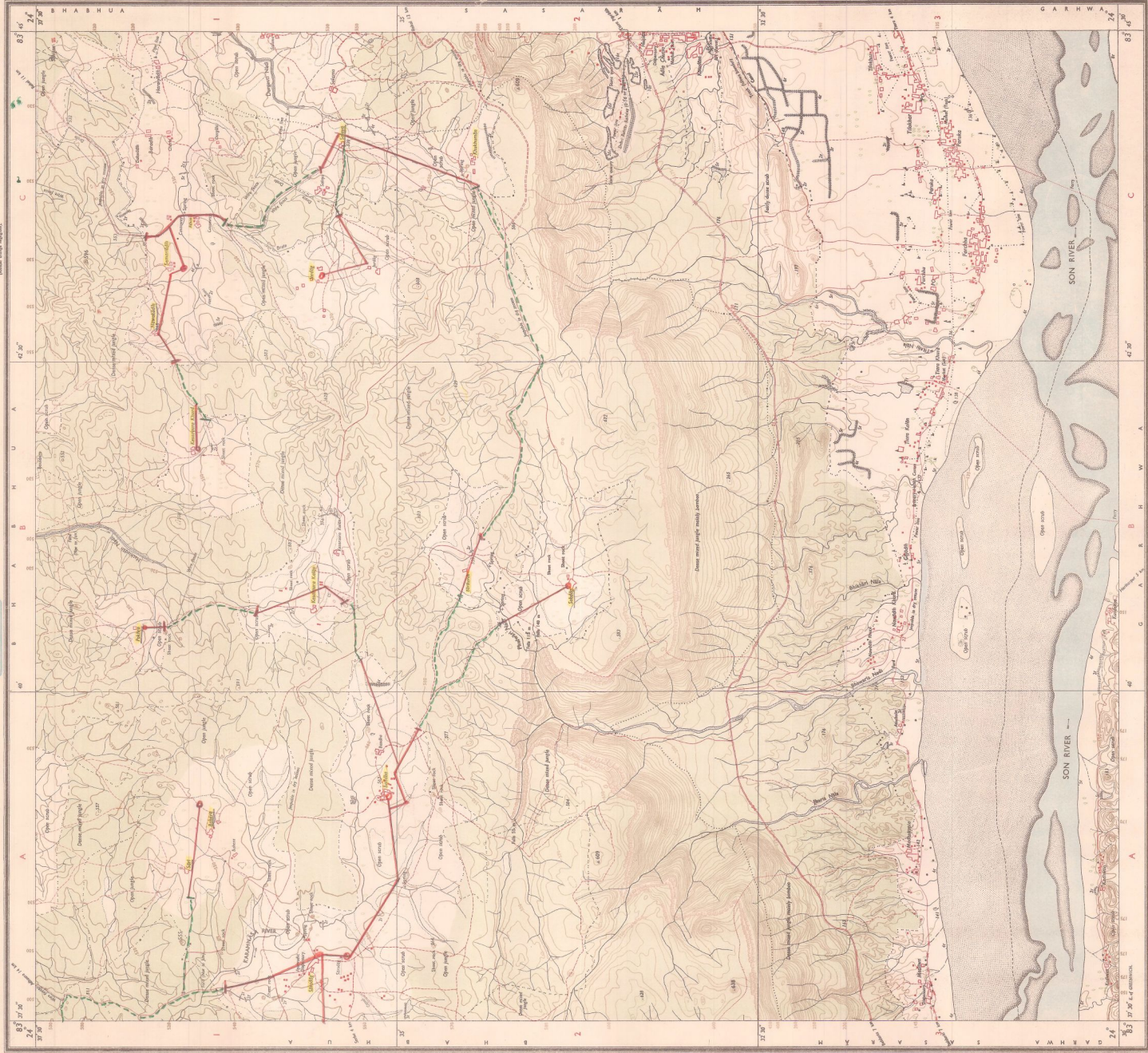
INDIA  
REFER TO THIS MAP AS - 1:25,000  
SHEET 43 F/10/SE FIRST EDITION

PALĀNHU & ROHTĀS DISTRICTS.

Scale 1:25,000

Magetic Variation from True North about 1° West in 1955.  
(Annual change negligible)

NO. 63 P/10/SE



Scale 1:25,000  
 1 cm = 250 m  
 1 inch = 6,350 feet

Vertical scale: 1 cm = 100 metres

Horizontal scale: 1 cm = 250 metres

Vertical scale: 1 inch = 3,280 feet

Horizontal scale: 1 inch = 6,350 feet

HEIGHTS & CONTOURS IN METRES  
 CONTOUR INTERVAL: 5 METRES  
 Contours are approximate.  
 The contour interval is 5 metres above 200 metres and 10 metres below 200 metres.  
 The contour interval is 10 metres below 200 metres and 20 metres below 200 metres.  
 The contour interval is 20 metres below 200 metres and 50 metres below 200 metres.

HEIGHTS & CONTOURS IN METRES  
 CONTOUR INTERVAL: 5 METRES  
 Contours are approximate.  
 The contour interval is 5 metres above 200 metres and 10 metres below 200 metres.  
 The contour interval is 10 metres below 200 metres and 20 metres below 200 metres.  
 The contour interval is 20 metres below 200 metres and 50 metres below 200 metres.

HEIGHTS & CONTOURS IN METRES  
 CONTOUR INTERVAL: 5 METRES  
 Contours are approximate.  
 The contour interval is 5 metres above 200 metres and 10 metres below 200 metres.  
 The contour interval is 10 metres below 200 metres and 20 metres below 200 metres.  
 The contour interval is 20 metres below 200 metres and 50 metres below 200 metres.

HEIGHTS & CONTOURS IN METRES  
 CONTOUR INTERVAL: 5 METRES  
 Contours are approximate.  
 The contour interval is 5 metres above 200 metres and 10 metres below 200 metres.  
 The contour interval is 10 metres below 200 metres and 20 metres below 200 metres.  
 The contour interval is 20 metres below 200 metres and 50 metres below 200 metres.

HEIGHTS & CONTOURS IN METRES  
 CONTOUR INTERVAL: 5 METRES  
 Contours are approximate.  
 The contour interval is 5 metres above 200 metres and 10 metres below 200 metres.  
 The contour interval is 10 metres below 200 metres and 20 metres below 200 metres.  
 The contour interval is 20 metres below 200 metres and 50 metres below 200 metres.

HEIGHTS & CONTOURS IN METRES  
 CONTOUR INTERVAL: 5 METRES  
 Contours are approximate.  
 The contour interval is 5 metres above 200 metres and 10 metres below 200 metres.  
 The contour interval is 10 metres below 200 metres and 20 metres below 200 metres.  
 The contour interval is 20 metres below 200 metres and 50 metres below 200 metres.

HEIGHTS & CONTOURS IN METRES  
 CONTOUR INTERVAL: 5 METRES  
 Contours are approximate.  
 The contour interval is 5 metres above 200 metres and 10 metres below 200 metres.  
 The contour interval is 10 metres below 200 metres and 20 metres below 200 metres.  
 The contour interval is 20 metres below 200 metres and 50 metres below 200 metres.

REFER TO THIS MAP AS - 1:25,000  
43 F/10/SE FIRST EDITION

REVISED PRICE  
Rs. 118/-