

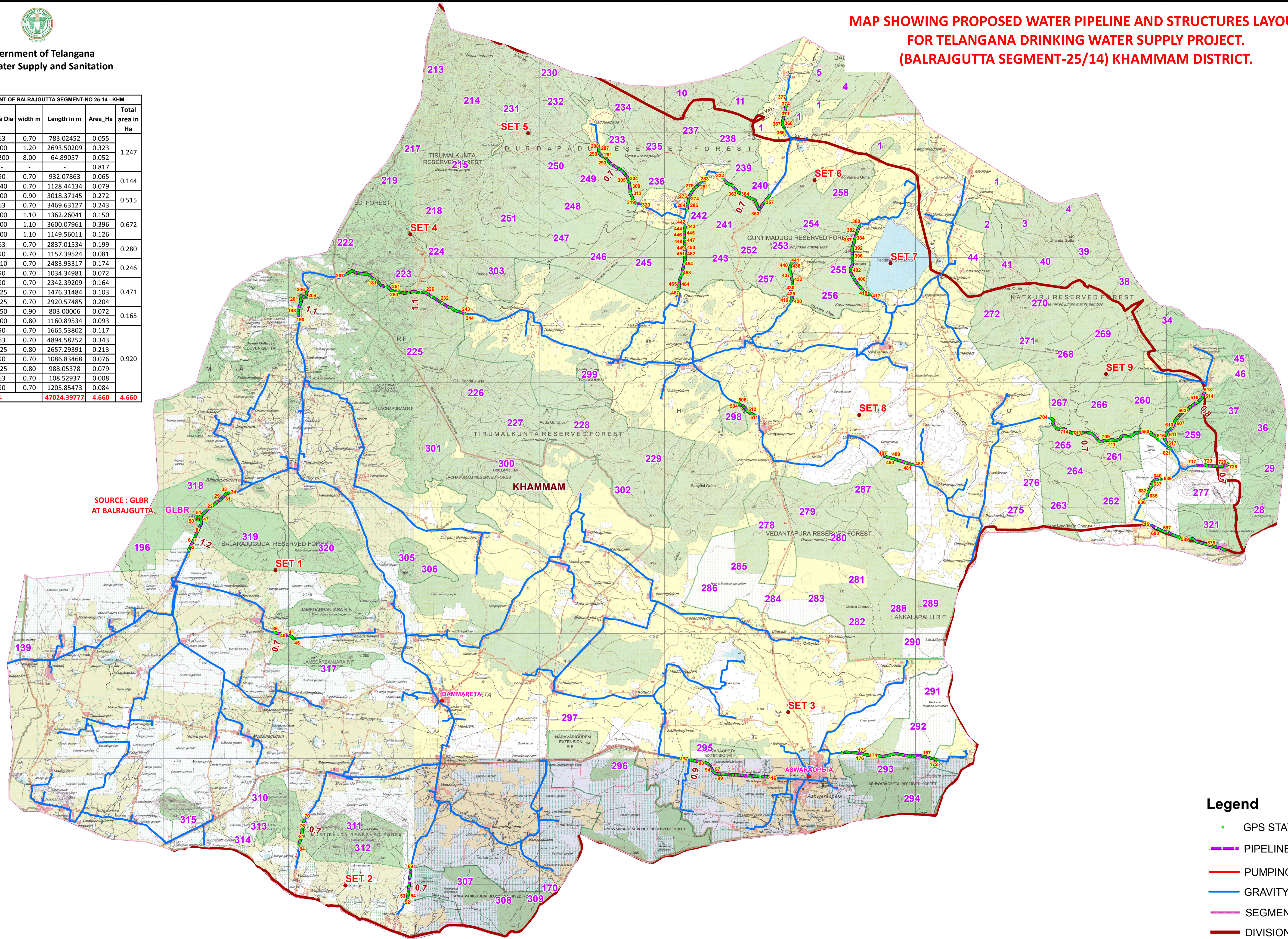


Government of Telangana
Rural Water Supply and Sanitation

**MAP SHOWING PROPOSED WATER PIPELINE AND STRUCTURES LAYOUT
FOR TELANGANA DRINKING WATER SUPPLY PROJECT.
(BALRAJGUTTA SEGMENT-25/14) KHAMMAM DISTRICT.**



Set	Structure type	Pipe Dia	width m	Length in m	Area_Ha	Total area in Ha
1	PIPELINE	63	0.70	783.02452	0.055	1.247
	PIPELINE	600	1.20	2693.50209	0.323	
	PIPELINE	1200	8.00	64.89057	0.052	
	GLBR				0.817	
2	PIPELINE	90	0.70	932.07863	0.065	0.144
	PIPELINE	140	0.70	1128.44134	0.079	
3	PIPELINE	300	0.90	3018.37145	0.272	0.515
	PIPELINE	63	0.70	3469.63127	0.243	
4	PIPELINE	300	1.10	1362.26041	0.150	0.672
	PIPELINE	300	1.10	3600.07961	0.396	
5	PIPELINE	300	1.10	1149.56011	0.126	0.280
	PIPELINE	63	0.70	2837.01534	0.199	
6	PIPELINE	110	0.70	2483.93317	0.174	0.246
	PIPELINE	90	0.70	1034.34981	0.072	
7	PIPELINE	90	0.70	2342.39209	0.164	0.471
	PIPELINE	125	0.70	1476.31484	0.103	
8	PIPELINE	250	0.90	803.00006	0.072	0.165
	PIPELINE	200	0.80	1160.89534	0.093	
9	PIPELINE	90	0.70	1665.53802	0.117	0.920
	PIPELINE	63	0.70	4894.58252	0.343	
	PIPELINE	125	0.80	2657.29391	0.213	
	PIPELINE	90	0.70	1086.83468	0.076	
	PIPELINE	125	0.80	988.05378	0.079	
TOTAL				47024.39777	4.660	4.660



SOURCE : GLBR
AT BALRAJGUTTA

- Legend**
- GPS STATION
 - PIPELINE IN FOREST
 - PUMPING MAIN
 - GRAVITY MAIN
 - SEGMENT BOUNDARY
 - DIVISION BOUNDARY

Geographic Coordinate System and WGS-84 Datum

