

निर्गत के लिए नहीं NOT FOR EXPORT

OPEN SERIES MAP

No. F42R8

Scale 1:50,000

F42R3 (410/3)	F42R7 (410/7)	F42R11 (410/11)
F42R4 (410/4)	Amreli GUJARAT F42R8 (410/8)	F42R12 (410/12)
F42X1 (41P/1)	F42X5 (41P/5)	F42X9 (41P/9)

भारतीय सर्वेक्षण विभाग SURVEY OF INDIA

1st Edition 2018. Price : ₹ 118/-

CONVENTIONAL SYMBOLS

Express highway, with toll, with bridge, with distance stone

Roads, double carriageway, according to importance

Unmetalled road, Cart-track, Pack-track with pass, Foot-path

Streams, with track in bed undisturbed, Canal

Dams, masonry or rock-filled, earthwork, Weir

River, dry with water channel, with island & rocks, Tidal river

Submerged rocks, Shoal, Swamp, Reeds

Wells, lined, unlined, Tube-well, Spring, Tanka, Tanka, perennial, dry

Embankments, road or rail, with, Broken ground

Railways, broad gauge, double, single with station, under construction

Railways, other gauges, double, single with distance stone, do.

Mineral line or tramway, Kin, Cutting with tunnel

Contours with sub-features, Rocky slopes, Cliffs

Sand features, (1)at, (2)land-hill, (3)dunes, (4)shifting

Towns or Villages, inhabited, deserted, Fort

Huts, permanent, temporary, Tower, Antiquities

Temple, Chhatri, Church, Mosque, Idgah, Tomb, Graves

Lighthouse, Lightship, Buoy, lighted, unlighted, Anchorage

Mine, Vine on trellis, Grass, Scrub, Other trees

Palms, palm, other, Plantain, Conifer, Bamboo, Other trees

Areas, cultivated, wooded, Surveyed line

Boundary, International

State, demarcated, undemarcated

District, subdivision, tahsil or taluk, forest

Boundary pillars, surveyed, uncoloured

Heights, triangulated station, point, approximate

Bench-mark, geodetic, tertiary, canal

Post office, Overhead tank

Rest house or inspection bungalow, Circuit house, Police station

Camping ground, Forest, reserved, protected

Spaced names, administrative, locality or tribal

Hospital, Dispensary, Veterinary, Hospital / Dispensary

Airborne, Helipad, Tourist site

Power line, with poles surveyed, with poles unsurveyed

## REFERENCE

## Proposed C.A. Land Location.

REFERENCE

NH 66 State Highway No. 66

NOTES :-

Heights and contours have not been shown

A relative height, e.g. 5, represents the approximate height, in metres, between the top and bottom of a steep slope

Tanks, shown dry, in this area usually contain water from July to December

Numerous field bunds of less than 2 metres in height occur throughout the cultivated area

COMPILATION INDEX

A Surveyed during 1959-67, Updated for major details during 2005-08

Projection - UTM Datum - WGS 84

Magnetic Variation from True North about 1° West in 2005.

(Decreasing by about 1° annually)

1:50,000

500 m to 1 cm

2 cm to 1 km

Metres 1000 500 0 1 2 Kilometres

For further details about this map, please contact

Director

Gujarat, Damán & Diu Geo-Spatial Data Centre

Survey of India, Sector-10(A)

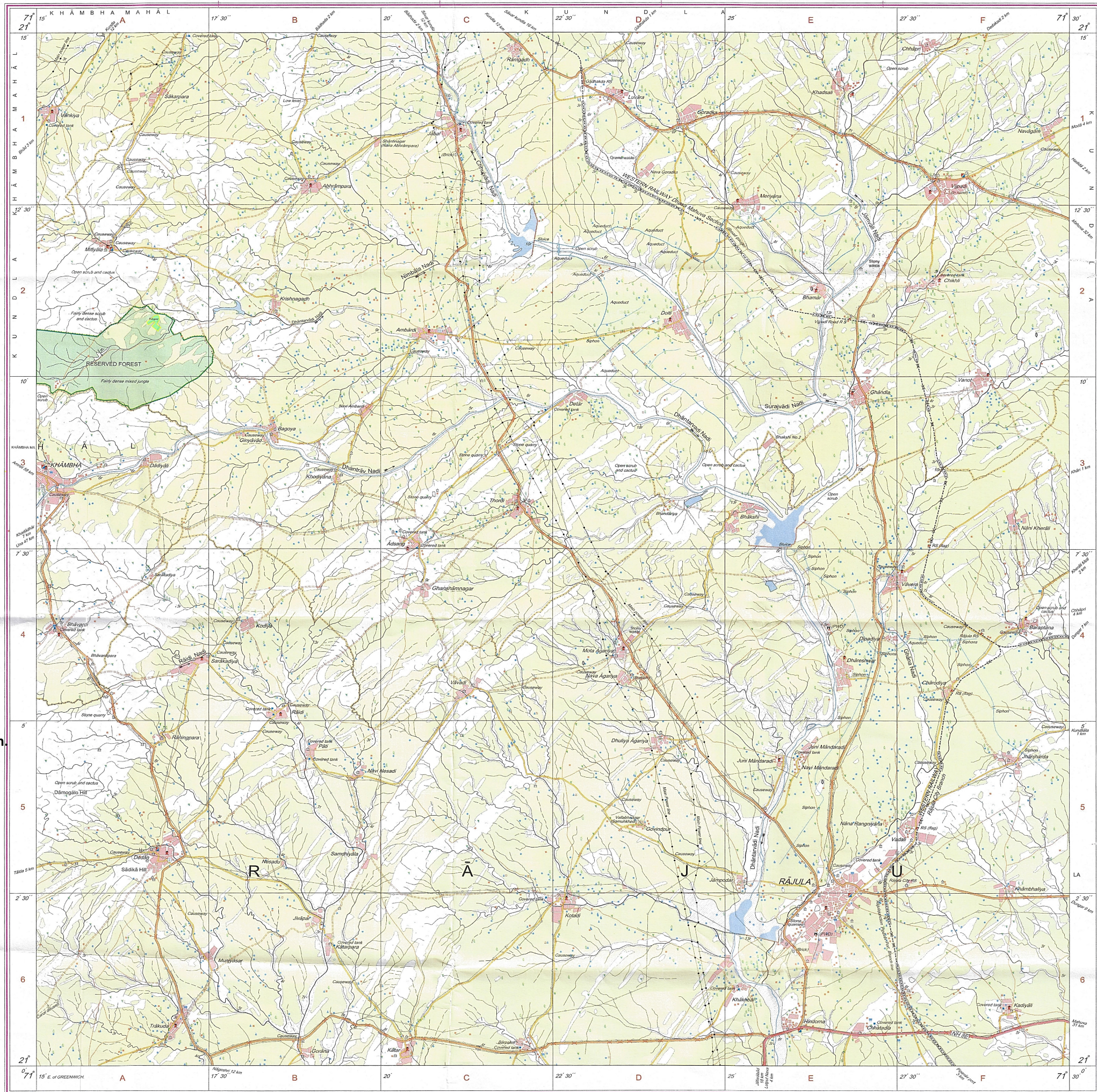
Gandhinagar

WEBSITE - www.surveyofindia.gov.in

Reproduction in whole or part by any means is prohibited without the written permission of Survey of India, the National Mapping Agency.

GOVERNMENT OF INDIA COPYRIGHT, 2018.

Name of Project: Diversion of 6.9702 ha. Forest land for Mining in favour of Nidhi stone at Village: Tuked Ta. Mandvi, Dist. Surat in Gujarat state.



PI - 0036 - NODC - 25

भारत के सर्वेक्षण विभाग द्वारा तैयार किया गया, निम्नलिखित रूप में प्रकाशित, Published under the direction of Lt Gen Gritish Kumar, VSM, Surveyor General of India, Survey of India, Hattibarkala Estate, Post Box No. 37, Dehra Dun-248001 (Uttarakhand), Department of Science & Technology, Government of India.

PRINTED AT THE NATIONAL GEOSPATIAL DATA CENTRE OF SURVEY OF INDIA.