

Division of Protected Forest land i.e road side strip plantation declared as protected forest for laying OFC along across protected forest under gir Somnath social forest division for Bharat Net Phase II Project (NOFN) in Junagadh District of Gujarat state.

INDIA
REFER TO THIS MAP AS - I:50,000
SHEET 41 K/3 FIRST EDITION

FIRST EDITION

Magnetic Variation from True North about 7 West in 1961
(Changing by about 1 yearly)

No. 41 K/3

JUNAGADH DISTRICT.

Surveyed 1964-66

GUJARAT



INDEX TO SHEETS

41 K/2	41 K/3	41 K/4
41 K/1	41 K/2	41 K/3
41 K/3	41 K/4	41 K/5
41 K/4	41 K/5	41 K/6

INDEX TO SHEETS

41 K/2	41 K/3	41 K/4
41 K/1	41 K/2	41 K/3
41 K/3	41 K/4	41 K/5
41 K/4	41 K/5	41 K/6



Administrative Index

JUNAGADH	...
...	...

INDEX TO SHEETS

41 K/2	41 K/3	41 K/4
41 K/1	41 K/2	41 K/3
41 K/3	41 K/4	41 K/5
41 K/4	41 K/5	41 K/6

REFER TO THIS MAP AS - I:50,000
SHEET 41 K/3 FIRST EDITION

Proposed Protected forest road

GOVERNMENT OF INDIA COPYRIGHT, 1961

INDIA

Division of Protected Forest land i.e road side strip plantation declared as protected forest for laying OFC along/across protected forest under gir Sonmath social forest division for Bharat Net Phase II Project (NOFN) in Junagadh District of Gujarat state.



ગુજરાત
GUJARAT

SECOND EDITION

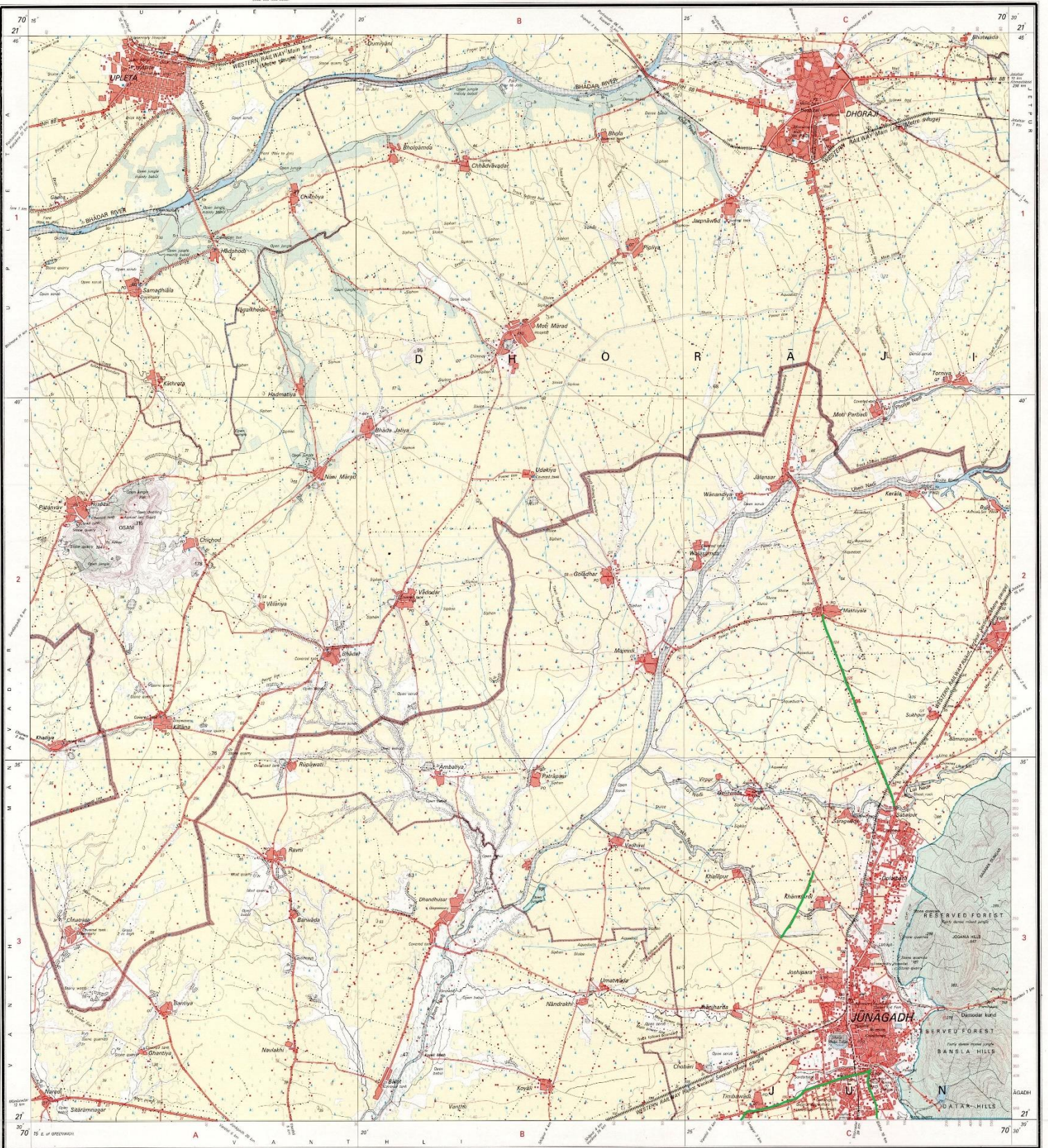
INDIA
REFER TO THIS MAP AS :- 1:50,000
SHEET 41 K/6 SECOND EDITION

JUNAGADH & RAJKOT DISTRICTS.

Surveyed 1967-68.

Magnetic Variation from True North about 1° West in 1995.
(Decreasing by about 1' annually)

No. 41 K/6



સર્વે નં. 1975-6-1975-9-59-1277-6-2.

Boundary of reserved forest area	...
Boundary of protected forest area	...
Boundary of forest reserve area	...
Boundary of forest land	...
Boundary of forest land (under acquisition)	...
Boundary of forest land (under survey)	...
Boundary of forest land (under settlement)	...
Boundary of forest land (under lease)	...
Boundary of forest land (under grant)	...
Boundary of forest land (under purchase)	...
Boundary of forest land (under donation)	...
Boundary of forest land (under other)	...

Index to Shells

0.5	1	2	3	4	5	6	7	8	9	10
11	12	13	14	15	16	17	18	19	20	21

સર્વે નં. 1975-6-1975-9-59-1277-6-2
Published under the direction of Dr. Prithvi Nath, Surveyor General of India,
Survey of India, Hydrographic Section, Post Box No. 37, Darya Dün - 288001 (Utaranchal),
Department of Science & Technology, Government of India.

2004
1:50,000

Scale: 1:50,000
2 cm to 1 km

HEIGHTS & CONTOUR IN METRES
CONTOUR INTERVAL: 5 METRES

40m contours are shown in blue color.
No. printed contours are shown in yellow.
The contour interval of area of reserved or protected forest are shown by green lines.

Contours are shown in brown color.
The contour interval is 5 metres between the 100 and below of a 200 ft contour.
Reserved areas are indicated by green lines and other reserved areas are shown by green lines.

Administrative Index

INDIA	...
GUJARAT	...
JUNAGADH	...

PRINTED AT OBSERVING GROUP OF SURVEY OF INDIA

Shells of forest	...
Shells of reserved forest	...
Shells of protected forest	...
Shells of forest reserve	...
Shells of forest land	...
Shells of forest land (under acquisition)	...
Shells of forest land (under survey)	...
Shells of forest land (under settlement)	...
Shells of forest land (under lease)	...
Shells of forest land (under grant)	...
Shells of forest land (under purchase)	...
Shells of forest land (under donation)	...
Shells of forest land (under other)	...

REFER TO THIS MAP AS :- 1:50,000
SHEET 41 K/6 SECOND EDITION

REFERENCES: 07. Overland map.

GOVERNMENT OF INDIA COPYRIGHT, 2004.
Printed: Tatyasaheb Rajgopal.

Division of Protected Forest land i.e. road side strip plantation declared as protected forest for laying OFC along/ across protected forest under gir Somnath social forest division for Bharat Net Phase II Project (NOFN) in Junagadh District of Gujarat state.

JUNAGADH DISTRICT.

Surveyed 1966-67.

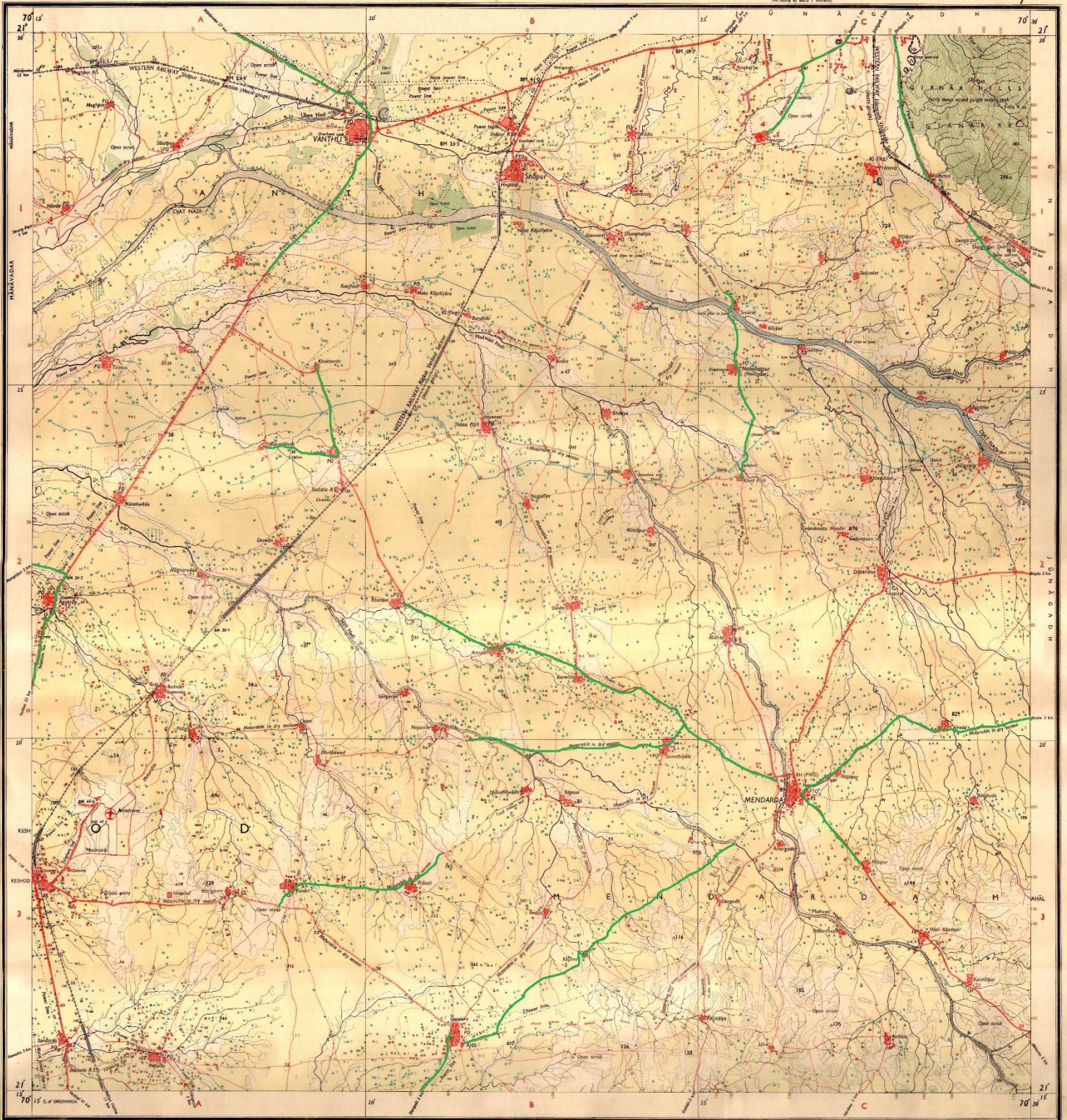
GUJARAT

FIRST EDITION

Magnetic Variation from True North about 1/2 West in 1965.

REFER TO THIS MAP AS- 1:50,000 SHEET 41 K/7 FIRST EDITION

No. 41 K

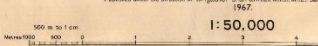


Scale No. 5000 1:50,000 1:50,000 1:50,000

Route marked according to importance distance signs	22
Unimproved road	21
Cart-track, foot-track and path. Foot-path with bridge	20
Bridge with stone pillars. Causeway. Ford at ferry	19
Swampy and marshy ground. Canal	18
Dam, reservoir or water tank (with or without dam)	17
River, stream, brook, gully, 1/2 to 1/4 m. wide, 1/2 to 1/4 m. deep	16
Water with sand, silt, or mud. Shallow. Sand bar	15
Water with sand, silt, or mud. Shallow. Sand bar	14
Water with sand, silt, or mud. Shallow. Sand bar	13
Water with sand, silt, or mud. Shallow. Sand bar	12
Water with sand, silt, or mud. Shallow. Sand bar	11
Water with sand, silt, or mud. Shallow. Sand bar	10
Water with sand, silt, or mud. Shallow. Sand bar	9
Water with sand, silt, or mud. Shallow. Sand bar	8
Water with sand, silt, or mud. Shallow. Sand bar	7
Water with sand, silt, or mud. Shallow. Sand bar	6
Water with sand, silt, or mud. Shallow. Sand bar	5
Water with sand, silt, or mud. Shallow. Sand bar	4
Water with sand, silt, or mud. Shallow. Sand bar	3
Water with sand, silt, or mud. Shallow. Sand bar	2
Water with sand, silt, or mud. Shallow. Sand bar	1

Index to Sheets

41 K/7	41 K/8	41 K/9
41 K/6	41 K/7	41 K/8
41 K/5	41 K/6	41 K/7
41 K/4	41 K/5	41 K/6



HEIGHTS & CONTOURS IN METRES
CONTOUR INTERVAL 20 METRES

Water features are shown in blue where they generally contain water. Cultivated areas are colored yellow. The number (sometimes) of trees of a particular species are shown by green circles. Contours are approximate. A dashed line represents the approximate height in metres between the top and bottom of a steep slope. Wooded areas are colored green. Shaded areas and other vegetation are in green, but prominent wooded areas are in black.

Administrative Index

JUNAGADH

Traces of villages (uninhabited) (see Part I)	12
Traces of villages (inhabited) (see Part I)	11
Traces of villages (inhabited) (see Part I)	10
Traces of villages (inhabited) (see Part I)	9
Traces of villages (inhabited) (see Part I)	8
Traces of villages (inhabited) (see Part I)	7
Traces of villages (inhabited) (see Part I)	6
Traces of villages (inhabited) (see Part I)	5
Traces of villages (inhabited) (see Part I)	4
Traces of villages (inhabited) (see Part I)	3
Traces of villages (inhabited) (see Part I)	2
Traces of villages (inhabited) (see Part I)	1

REFER TO THIS MAP AS- 1:50,000 SHEET 41 K/7 FIRST EDITION

Proposed Protected forest road

INDIA

GOVERNMENT OF INDIA COPYRIGHT, 1967. Price: 500 Rupees

Division of Protected Forest land Le road side strip plantation declared as protected forest for laying OFC along/ across protected forest under gir Somnath social forest division for Bharat Net Phase II Project (NOFN) in Junagadh District of Gujarat state.

INDIA
REFER TO THIS MAP AS:- 1:50,000
SHEET 41 K/11 FIRST EDITION

GUJARAT

FIRST EDITION

Magnetic Variation from True North about 1/2° West in 1965.
(Decreasing by about 1' annually)

No. 41 K

JUNAGADH DISTRICT.

Surveyed 1966-67.



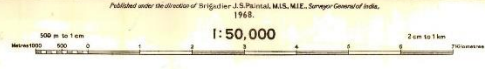
Scale No. 1000 (M.C.A. 13/31) 502/73-9 206/2/8

Roads installed, according to importance, distance, season, etc.

Unimproved do.	do.	do.	do.
Cart tracks, foot-paths and lanes	Foot-paths with bridges	Bridges with stone, masonry, Causeway, Ford or Ferry	Streams with tracks in bed, Causeway, Canal
Dam, masonry or masonry, masonry, etc.	Do.	Do.	Do.
River banks, ordinary, masonry, 3 to 6 metres, over 6 metres	do with water channel with about 1000 ft. deep river	Submerged rocks, Shoal, Sandbar, Reef	Waterfalls, cascades, rapids, springs, tanks, reservoirs, etc.
Embankment, masonry or masonry, masonry, etc.	Do.	Do.	Do.
Railways, broad gauge, metre gauge, etc.	Do.	Do.	Do.
Electric lines, overhead, underground, etc.	Do.	Do.	Do.
Telegraph lines, overhead, underground, etc.	Do.	Do.	Do.
Telephone lines, overhead, underground, etc.	Do.	Do.	Do.
Post office, telegraph office, etc.	Do.	Do.	Do.
Police station, etc.	Do.	Do.	Do.
Public building, etc.	Do.	Do.	Do.
Fort, etc.	Do.	Do.	Do.
Well, etc.	Do.	Do.	Do.
Spring, etc.	Do.	Do.	Do.
Well, etc.	Do.	Do.	Do.
Spring, etc.	Do.	Do.	Do.
Well, etc.	Do.	Do.	Do.
Spring, etc.	Do.	Do.	Do.

Index to Sheets

41 K/11	41 K/12	41 K/13
41 K/14	41 K/15	41 K/16
41 K/17	41 K/18	41 K/19
41 K/20	41 K/21	41 K/22



HEIGHTS & CONTOURS IN METRES
CONTOUR INTERVAL 20 METRES

Water features are shown in blue where they generally contain water.
Cultivated areas are colored yellow.
The extent of forested areas of Reserve or Protected Forests are shown by green tints.

Contours are approximate.
A raised height, 100, represents the approximate height, in meters, of the top and bottom of a steep slope.
Mountains are indicated by brown shaded areas and other vegetation are in green, and plantation nurseries are in black.

Administrative Index
JUNAGADH

Notes on Village, etc.

Village, etc.	...
Temples, etc.	...
Lighthouses, etc.	...
...	...

REFER TO THIS MAP AS:- 1:50,000
SHEET 41 K/11 FIRST EDITION
INDIA

Proposed Protected forest Road

The minimum scale contour along roads and railways are shown in black, 1/2° where village numbers are shown in upright type, e.g., 1/2°
GH Reserved Forest area is not included in any sheet, but a part of 20/10th Division.
Tide in this area usually occurs near the July or November.

GOVERNMENT OF INDIA COPYRIGHT, 1966.
Price Ten Rupees.

Division of Protected Forest land i.e. road side strip plantation declared as protected forest for laying OFC along/ across protected forest under gir Somnath social forest division for Bharat Net Phase II Project (NOFN) in Junagadh District of Gujarat state.

INDIA
REFER TO THIS MAP AS- SHEET 41 K/15 FIRST EDITION
1:50,000

FIRST EDITION

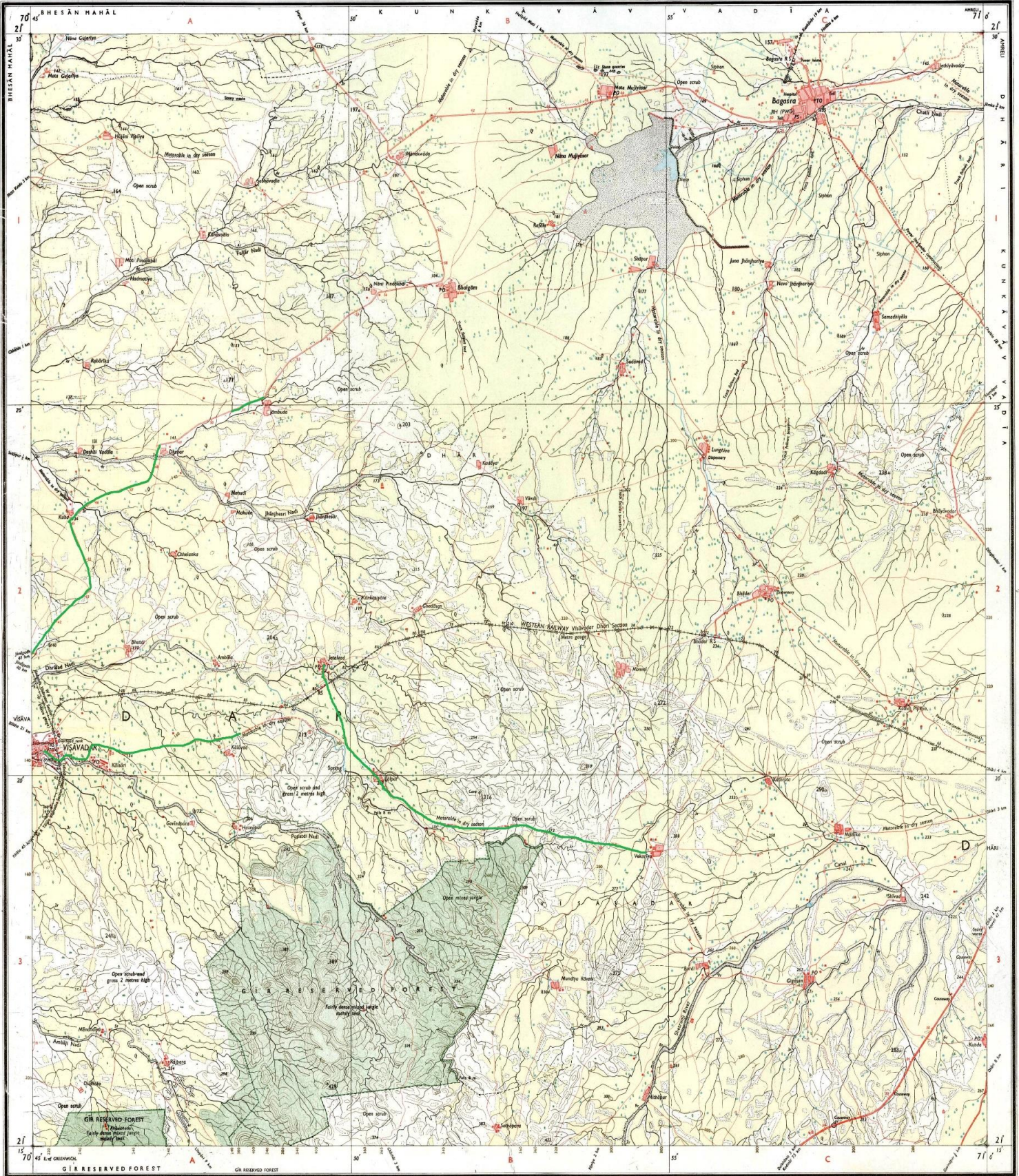
Magnetic Variation from True North about 1° West in 1985.
(Increasing by about 2' annually)

No. 41 K/15

AMRELI & JUNAGADH DISTRICTS.

Surveyed 1966-67.

GUJARAT



Pub. No. 1077 AND IN (C) 1985/1986/87/88/89

Roads marked according to importance distance etc.

- unclassified: ————
- Can-track: ————
- Bridges: ————
- Sewerage: ————
- Ditch: ————
- Water supply: ————
- Submerged: ————
- Water tank: ————
- Embankment: ————
- Railway: ————
- Mine: ————
- Contour: ————
- Spot height: ————

Scale 1:50,000
Printed in India at Junagadh, 1st 1967.
Printed in India at Junagadh, 1st 1967.
Printed in India at Junagadh, 1st 1967.

Published under the direction of Brigadier J. S. Pantul, M.I.E., Survey General of India, 1968.

1:50,000

300 m to 1 km
1000 2000 3000 4000 5000 6000 7000 8000 9000 10000

2 cm to 1 km
0 1 2 3 4 5 6 7 8 9 10

HEIGHTS & CONTOURS IN METRES
CONTOUR INTERVAL 20 METRES

Water features are shown in blue where they generally contain water.
Cultivated areas are colored yellow.
The exterior boundaries of areas of Reserved or Protected Forests are shown by green lines.

Contours are approximate.
A relative height, (R.H.), represents the approximate height, in metres, between the top and bottom of a mass shown.
Wooded areas are colored green. Scattered trees and other vegetation are in green, but prominent surveyed trees are in black.

The boundary circle numbers along roads and railways are shown in black (1700, 1800, etc.). Where milestone numbers are shown in upright text, 40, 50, etc.

Gir Reserved Forest was not included in any sheet, but is a part of Bhilaga District.
Towns shown in this area usually contain water from July to November.

Administrative Index

Printed at the (R.E.L.D.) Press, Sector of Survey or India.

- Towns or villages: ————
- State boundaries: ————
- Police stations: ————
- Post offices: ————
- Subdivisions: ————
- Block boundaries: ————
- Revenue boundaries: ————
- Water courses: ————
- Canals: ————
- Ditches: ————
- Water supply: ————
- Water tanks: ————
- Embankments: ————
- Railways: ————
- Mines: ————
- Contours: ————
- Spot heights: ————

Scale 1:50,000
Printed in India at Junagadh, 1st 1967.
Printed in India at Junagadh, 1st 1967.
Printed in India at Junagadh, 1st 1967.

REFER TO THIS MAP AS- 1:50,000 SHEET 41 K/15 FIRST EDITION

Protected forest Land for diversion

REFERENCE
W.R. Western Railway Kutch-Bhuj Branch (Hiree group)

GOVERNMENT OF INDIA COPYRIGHT, 1986.
Price Ten Rupees.