

Division of Protected Forest Land i.e. Road side Strip Plantation declared as protected forest for laying along/across protected forest under Gir Somnath Social Forestry Division for Bharat Net Phase II Project(NOFN) in Junagadh Dist. Of Gujarat State.

INDIA  
REFER TO THIS MAP AS -  
SHEET 41 K/8 FIRST EDITION

GUJARAT

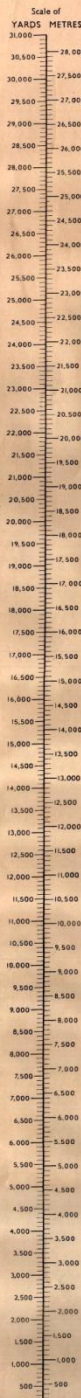
FIRST EDITION

No. 41 K/8

JUNAGADH DISTRICT.

Surveyed 1942-43

Magnetic Variation from True North about 7° West in 1960  
(Annual change negligible)

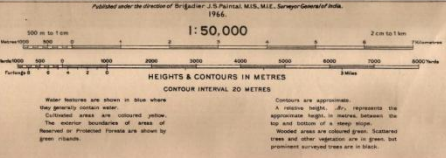


Scale of YARDS METRES

30,000  
28,000  
27,000  
26,000  
25,000  
24,000  
23,000  
22,000  
21,000  
20,000  
19,000  
18,000  
17,000  
16,000  
15,000  
14,000  
13,000  
12,000  
11,000  
10,000  
9,000  
8,000  
7,000  
6,000  
5,000  
4,000  
3,000  
2,000  
1,000  
0

Refer to this map as - 1:50,000  
SHEET 41 K/8 FIRST EDITION

INDIA



Administrative Index

JUNAGADH

Notes on Symbols (W.L.O.)

Scale of 1:50,000

0 1000 2000 3000 4000 5000 6000 7000 8000 metres

0 1 2 3 4 5 6 7 8 9 10 Kilometres

HEIGHTS & CONTOURS IN METRES

CONTOUR INTERVAL 20 METRES

Water features are shown in blue where they generally contain water. Coloured areas are coloured yellow. The natural boundaries of areas of Reserved or Protected Forests are shown by green lines.

Contours are approximations. A figure height (20) represents the approximate height in metres between the top and bottom of a range slope. Wooded areas are coloured green. Shaded areas and other vegetation are in green, but prominent uncultivated trees are in black.

REFER TO THIS MAP AS - 1:50,000  
SHEET 41 K/8 FIRST EDITION

INDIA

Proposed Protected Forest Road

The 150 metres wide road shown along the river is shown in black type e.g. 15. Where narrow roads are shown in white type e.g. 1.5. Tracks in this area usually contain water from July to September. Cultivation is possible and irrigation is possible. Gir Reserved Forest area is not included in any block.

Administrative Index

JUNAGADH

Notes on Symbols (W.L.O.)

Scale of 1:50,000

0 1000 2000 3000 4000 5000 6000 7000 8000 metres

0 1 2 3 4 5 6 7 8 9 10 Kilometres

HEIGHTS & CONTOURS IN METRES

CONTOUR INTERVAL 20 METRES

Water features are shown in blue where they generally contain water. Coloured areas are coloured yellow. The natural boundaries of areas of Reserved or Protected Forests are shown by green lines.

Contours are approximations. A figure height (20) represents the approximate height in metres between the top and bottom of a range slope. Wooded areas are coloured green. Shaded areas and other vegetation are in green, but prominent uncultivated trees are in black.

GOVERNMENT OF INDIA, COPYRIGHT, 1964.  
Price: Two Rupees.





Division of Protected Forest Land i.e. Road side Strip  
Plantation declared as protected forest for laying  
along/across protected forest under Gir Somnath Social  
Forestry Division for Bharat Net Phase II Project(NOFN) in  
Junagadh Dist. Of Gujarat State.

AMRELI & JUNAGADH DISTRICTS.

Surveyed 1944-45.

GUJARAT

FIRST EDITION

Magnetic Variation from True North about 1/2 West in 1960.

INDIA  
REFER TO THIS MAP AS- 1:50,000  
SHEET 41 L/9 and L/10 FIRST EDITION

No. 41 L/9 and L/10

Scale of  
YARDS METRES  
31,000  
28,000  
25,000  
22,000  
19,000  
16,000  
13,000  
10,000  
7,000  
4,000  
1,000  
0

Height  
Conversion  
Table  
FEET METRES  
3,300  
3,200  
3,100  
3,000  
2,900  
2,800  
2,700  
2,600  
2,500  
2,400  
2,300  
2,200  
2,100  
2,000  
1,900  
1,800  
1,700  
1,600  
1,500  
1,400  
1,300  
1,200  
1,100  
1,000  
900  
800  
700  
600  
500  
400  
300  
200  
100  
0



Index to Sheets

41 L/9	41 L/10
41 M/9	41 M/10
41 N/9	41 N/10
41 O/9	41 O/10

Administrative Index

Amreli	Junagadh
Amreli	Junagadh

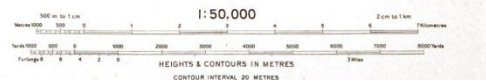
Points of the (S.I. 861.0) Proposed Outer or Inner or Main

Points of the (S.I. 861.0) Proposed Outer or Inner or Main	Points of the (S.I. 861.0) Proposed Outer or Inner or Main
Points of the (S.I. 861.0) Proposed Outer or Inner or Main	Points of the (S.I. 861.0) Proposed Outer or Inner or Main

REFER TO THIS MAP AS- 1:50,000  
SHEET 41 L/9 and L/10 FIRST EDITION

The horizontal scale of this map is to a distance of 1 inch equal to 1 mile measured from the  
meridian line.  
Gir Reserved Forest area is not included in any sheet, but is a part of Junagadh District.  
The distance shown between any two points and reference are shown in scale type 1/2" or 1/4" where distances  
are shown in length 1/2" or 1/4".  
Levels shown in this map usually represent mean sea level or topography.  
In some cases the levels are not shown, but are given in parentheses on the map.  
The sea and low-tide lines have been taken from Admiralty Charts, No. 1474 (INDIA-WEST COAST, KOFKATA  
BLUFF TO HANGKONG), 1962, with corrections to 1963.

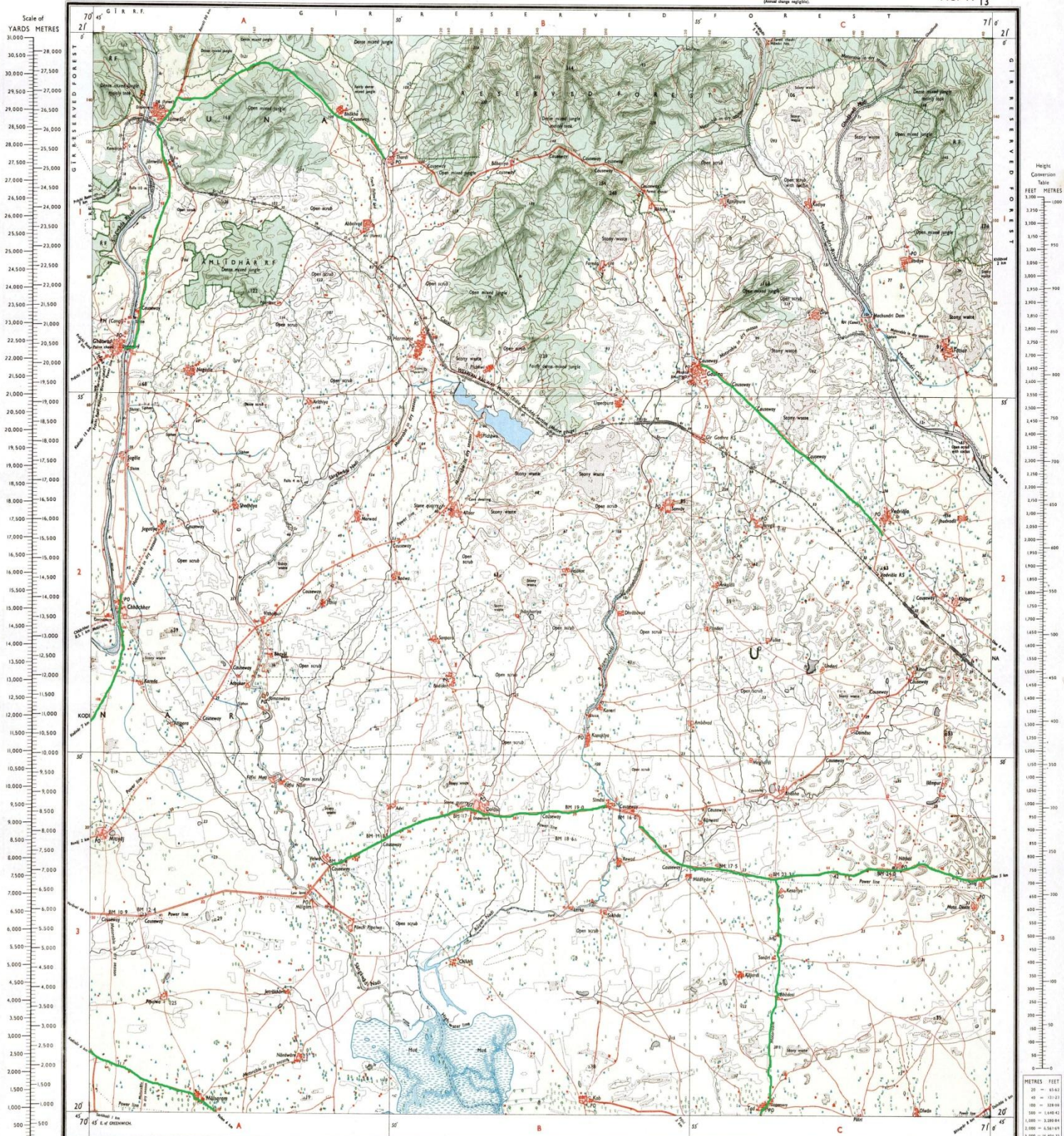
GOVERNMENT OF INDIA COPYRIGHT, 1962.  
Price: Two Rupees.



Water Sources are shown in blue where they are permanent. Coloured areas and colored yellow. The interior boundaries of areas of Reserved or Protected Forests are shown by green lines.

Contours are approximate. A relative height, etc. represents the approximate height in meters, between the top and bottom of a steep slope. Shaded areas are reserved forest. Shaded trees and other vegetation are in green, but prominent bareland trees are in black.

Proposed Protected Forest Road



Scale of YARDS METRES

31,000  
28,000  
27,500  
27,000  
26,500  
26,000  
25,500  
25,000  
24,500  
24,000  
23,500  
23,000  
22,500  
22,000  
21,500  
21,000  
20,500  
20,000  
19,500  
19,000  
18,500  
18,000  
17,500  
17,000  
16,500  
16,000  
15,500  
15,000  
14,500  
14,000  
13,500  
13,000  
12,500  
12,000  
11,500  
11,000  
10,500  
10,000  
9,500  
9,000  
8,500  
8,000  
7,500  
7,000  
6,500  
6,000  
5,500  
5,000  
4,500  
4,000  
3,500  
3,000  
2,500  
2,000  
1,500  
1,000  
500  
0

Scale of FEET METRES

3,100  
2,800  
2,750  
2,700  
2,650  
2,600  
2,550  
2,500  
2,450  
2,400  
2,350  
2,300  
2,250  
2,200  
2,150  
2,100  
2,050  
2,000  
1,950  
1,900  
1,850  
1,800  
1,750  
1,700  
1,650  
1,600  
1,550  
1,500  
1,450  
1,400  
1,350  
1,300  
1,250  
1,200  
1,150  
1,100  
1,050  
1,000  
950  
900  
850  
800  
750  
700  
650  
600  
550  
500  
450  
400  
350  
300  
250  
200  
150  
100  
50  
0

Index to Sheets

41 L/12	41 L/13	41 L/14
41 M/12	41 M/13	41 M/14
41 N/12	41 N/13	41 N/14
41 O/12	41 O/13	41 O/14

Published under the direction of Brigadier J. S. Parrot, M.I.S., M.I.E., Surveyor General of India.

500 m to 1 cm  
1:50,000  
2 cm to 1 km

HEIGHTS & CONTOURS IN METRES  
CONTOUR INTERVAL 20 METRES

Water features are shown in blue where they generally collect water.  
Cultivated areas are coloured yellow.  
The number of contours of level of Rivers or Protected Forests are shown by green intervals.  
Contours are approximate.  
A double height (20) represents the approximate height in metres between the top and bottom of a steep slope.  
Wooded areas are coloured green. Scattered trees and other vegetation are in green but prominent scattered trees are in black.

Administrative Index

Amreli	Junagadh
--------	----------

Printed at No. 10, B.L.D.S. Press, Cochin in India.

Streets or Villages (shaded) unshaded Fort	...
Plate glass window (shaded) Tower, Antenna	...
Temple, Chhatra, Church, Mosque, Ganga, Stone, Ganga	...
Lighthouse, Lightship, Buoy, Lighted, unlighted, Anchorage	...
Mine, View on tower, Drains, Scarps	...
Phone, post-office, Police, Control, Radio, Other, etc.	...
Boundary, International	...
Water, unshaded, unshaded	...
Electric, unshaded, unshaded	...
Secondary, unshaded, unshaded	...
Boundary, unshaded, unshaded	...
Height, unshaded, unshaded	...
Plate glass window, unshaded	...
Temple, unshaded, unshaded	...
Church, unshaded, unshaded	...
Lightship, unshaded, unshaded	...
Lighted, unshaded, unshaded	...
Unlighted, unshaded, unshaded	...
View on tower, unshaded	...
Drains, unshaded, unshaded	...
Scarps, unshaded, unshaded	...
Phone, unshaded, unshaded	...
Post-office, unshaded, unshaded	...
Police, unshaded, unshaded	...
Control, unshaded, unshaded	...
Radio, unshaded, unshaded	...
Other, unshaded, unshaded	...
etc., unshaded, unshaded	...

REFER TO THIS MAP AS- 1:50,000  
SHEET 41 L/13 FIRST EDITION  
INDIA

Proposed Protected Forest Road

GOVERNMENT OF INDIA COPYRIGHT, 1967.  
Price Two Rupees

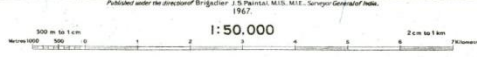


Scale 1:50,000

Highways	...
Trunk roads	...
Other roads	...
Canals	...
Water courses	...
...	...

Index to Sheets

40	41	42
39	40	41
38	39	40



HEIGHTS & CONTOURS IN METRES  
CONTOUR INTERVAL 20 METRES

Water features are shown in blue where they generally occupy water. Contoured areas are coloured yellow. The contour interval of areas of Reserved or Protected Forests are shown by green lines.

Contours are approximately 10 metres height. They represent the approximate height in metres between the top and bottom of a given slope. Wooded areas are coloured green. Shaded areas and other vegetation are in green, but prominent contour lines are in black.



...	...
...	...
...	...
...	...
...	...

REFER TO THIS MAP AS:-  
1:50,000  
SHEET 41 P/1 and P/2 FIRST EDITION

Proposed Protected Forest Road

The kilometre scale numbers along roads and railway are shown in blue (e.g. 17) whereas kilometre numbers are shown in upright (e.g. 17).  
Towns shown in this area usually receive water from July to September.  
The sea and sea-level line have been taken from Admiralty Chart No. 1474 (INDIA WEST COAST, KOTABA BLUFF TO MANGALORE), dated 1942 with corrections to 1945.  
Gir Reserved Forest area is not included in any block, but is part of Junagadh District.  
The horizontal scales of India extend only to the sea in a distance of twelve nautical miles measured from the appropriate base line.

COMPILED INDEX  
A. Compiled from 1:25,000 (1944), 1944-45.  
B. Modern survey 1932-46.

Division of Protected Forest Land Le Road side Strip Plantation declared as protected forest for laying along/across protected forest under Gir Somnath Social Forestry Division for Bharat Net Phase II Project(NOFM) in Junagadh Dist. Of Gujarat State.

# दमण और दीव, गुजरात DAMAN & DIU, GUJARAT

SECOND EDITION

INDIA  
REFER TO THIS MAP AS - 1:50,000  
SHEET 41 L/14 SECOND EDITION

Magnetic Variation from True North about 1 West in 1955.  
(Changing by about 1 annually)

No. 41 L/14



INDEX TO SHEETS

41 L/13	41 L/14	41 L/15
41 L/12	41 L/13	41 L/14
41 L/11	41 L/12	41 L/13

SYMBOLS

	Boundary of reserved forest
	Boundary of protected forest
	Boundary of village
	Boundary of hamlet
	Boundary of enclosure
	Boundary of plantation
	Boundary of reserved forest
	Boundary of protected forest
	Boundary of village
	Boundary of hamlet
	Boundary of enclosure
	Boundary of plantation

HEIGHTS & CONTOURS IN METRES  
CONTOUR INTERVAL 10 METRES

Contours are approximate. A brown spot 'x' represents the approximate height in metres between the top and bottom of a steep rise. Shaded areas are coloured green. Shaded trees and other vegetation are in green, but prominent surveyed trees are shown in black.

Tanks, shown only, in this area usually contain water from July to November. The ten- and twenty-metre bathymetric contours have been taken from the Indian Chart No. 207 2500-WEET COAST, DIU ROAD TO GOMATH POINT dated 1967 with corrections to November 1971. The territorial waters of India extend into the sea to a distance of twelve nautical miles measured from the appropriate base line. Cultivation is periodic and dependent on rainfall. This sheet has been compiled from 1:25,000 survey.

ADMINISTRATIVE INDEX

Towns or Villages (containing reserved forest)	41 L/14
Hamlets (containing reserved forest)	41 L/14
Temples, Churches, Mosques, Light, Signal, Obelisk	41 L/14
Lighthouses, Lightships, Buoys, Signal, Long-range Anchorage	41 L/14
Water Works, Airfields, Dams, Wells	41 L/14
Public buildings, Courts, Markets, Cantons, Barracks, Other buildings	41 L/14
Boundary International	41 L/14
Boundary of reserved forest	41 L/14
Boundary of protected forest	41 L/14
Boundary of village	41 L/14
Boundary of hamlet	41 L/14
Boundary of enclosure	41 L/14
Boundary of plantation	41 L/14
Boundary of reserved forest	41 L/14
Boundary of protected forest	41 L/14
Boundary of village	41 L/14
Boundary of hamlet	41 L/14
Boundary of enclosure	41 L/14
Boundary of plantation	41 L/14

GOVERNMENT OF INDIA COPYRIGHT, 2002  
Price Twenty-five Rupees

RESTRICTED  
This map is NOT to be published, used or reproduced in part or in whole without the permission of the Controller of Publications, Government of India, New Delhi.

REFER TO THIS MAP AS - 1:50,000  
SHEET 41 L/14 SECOND EDITION  
INDIA

Proposed Protect Forest Road