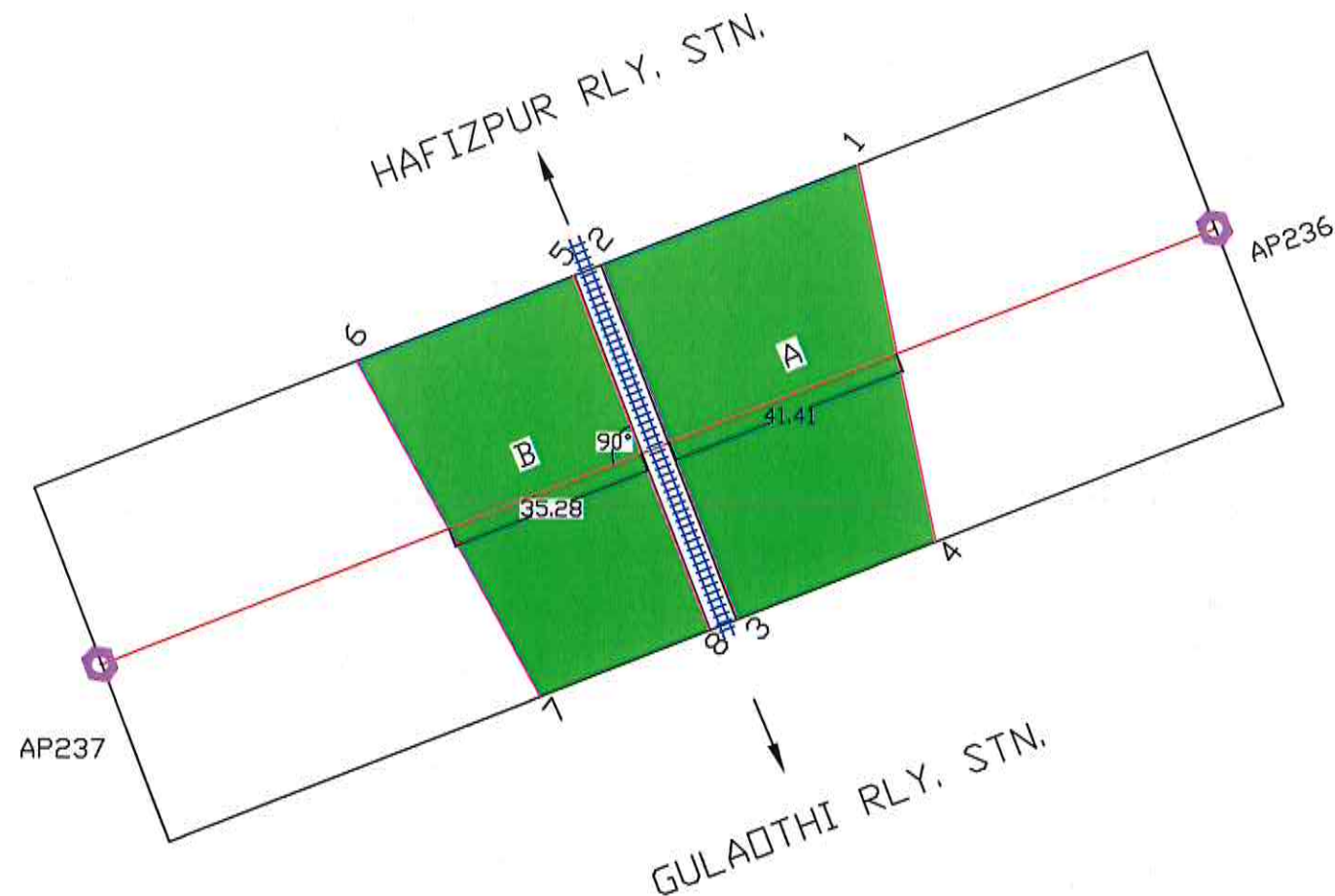


# GEO-REFERENCED MAP OF FOREST LAND PROPOSED FOR DIVERSION IN KHURJA-HAPUR RAILWAY LINE NEAR MURSHADPUR VILLAGE



FOREST AREA DGPS Coordinate's			
Area	SL NO.	Latitude(N)	Longitude(E)
	1	28°38'5.60"	77°47'23.44"
	2	28°38'5.07"	77°47'21.79"
	3	28°38'3.10"	77°47'22.61"
	4	28°38'3.53"	77°47'23.91"
	5	28°38'4.96"	77°47'21.62"
	6	28°38'4.56"	77°47'20.30"
	7	28°38'2.71"	77°47'21.40"
	8	28°38'3.04"	77°47'22.47"

## Area Calculation For A & B

$$(A) \frac{64m}{\sin(90^\circ)} \times 41.41m = 2650.24 \text{ m}^2 \\ = 0.265024 \text{ Hectares}$$

$$(B) \frac{64m}{\sin(90^\circ)} \times 35.28m = 2257.92 \text{ m}^2 \\ = 0.225792 \text{ Hectares}$$

$$\text{Total Forest area} = 4908.16 \text{ m}^2 \\ = 0.4908 \text{ Hectares}$$

## Legend

- Tower location
- Forest Area DGPS Coordinates
- Railway Line
- Transmission Line Corridor in Forest Area
- Transmission line Corridor in Non Forest Area

Area Proposal of Forest			
Forest Length(m)	R.O.W. Corridor (m)	Forest Area ( m <sup>2</sup> )	Forest Area (ha.)
(41.41+35.28)76.69m	64.0m	4908.16	0.4908



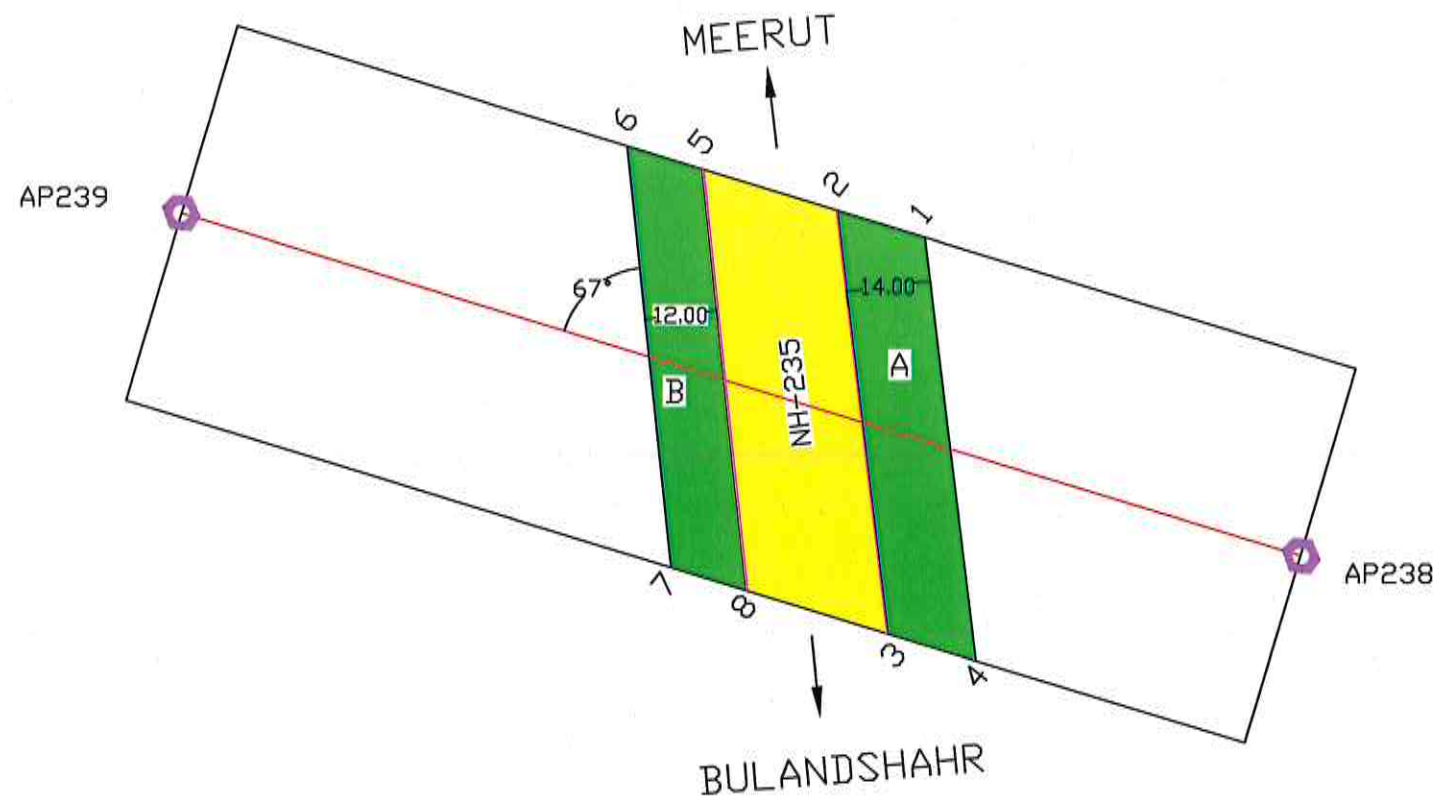
0 5 10 20 30 40 Meters



PROJECT:-	765 KV S/C GHATAMPUR- HAPUR TRANSMISSION LINE
User Agency:-	GHATAMPUR TRANSMISSION LIMITED
Dwg. Title:-	765 KV S/C GHATAMPUR - HAPUR PROPOSED TRANSMISSION LINE ROUTE (IN HAPUR FOREST DIV.)
DATE - 06/9/2019	DRAWING No - GTL/G-H/54



# GEO-REFERENCED MAP OF FOREST LAND PROPOSED FOR DIVERSION IN MEERUT-BULANDSHAHR ROAD(NH-235) NEAR MURSHADPUR VILLAGE



FOREST AREA DGPS Coordinate's			
Area	SL NO.	Latitude(N)	Longitude(E)
	1	28°38'2.24"	77°47'4.63"
	2	28°38'2.41"	77°47'4.10"
	3	28°38'0.12"	77°47'4.37"
	4	28°37'59.99"	77°47'4.82"
	5	28°38'2.60"	77°47'3.28"
	6	28°38'2.73"	77°47'2.84"
	7	28°38'0.49"	77°47'3.07"
	8	28°38'0.36"	77°47'3.50"

## Area Calculation For A & B

$$(A) \frac{64m}{\sin(67^\circ)} \times 14m = 937.378898 m^2 = 0.093738 \text{ Hectares}$$

$$(B) \frac{64m}{\sin(67^\circ)} \times 12m = 834.3247698 m^2 = 0.083432 \text{ Hectares}$$

$$\text{Total Forest area} = 1771.703668 m^2 = 0.1772 \text{ Hectares}$$

## Legend

- Tower location
- Forest Area DGPS Coordinates
- Railway Line
- Transmission Line Corridor in Forest Area
- Transmission line Corridor in Non Forest Area

Area Proposal of Forest			
Forest Length(m)	R.O.W. Corridor (m)	Forest Area ( m <sup>2</sup> )	Forest Area (ha.)
(14+12) 26m	64.0m	1771.7036	0.1772

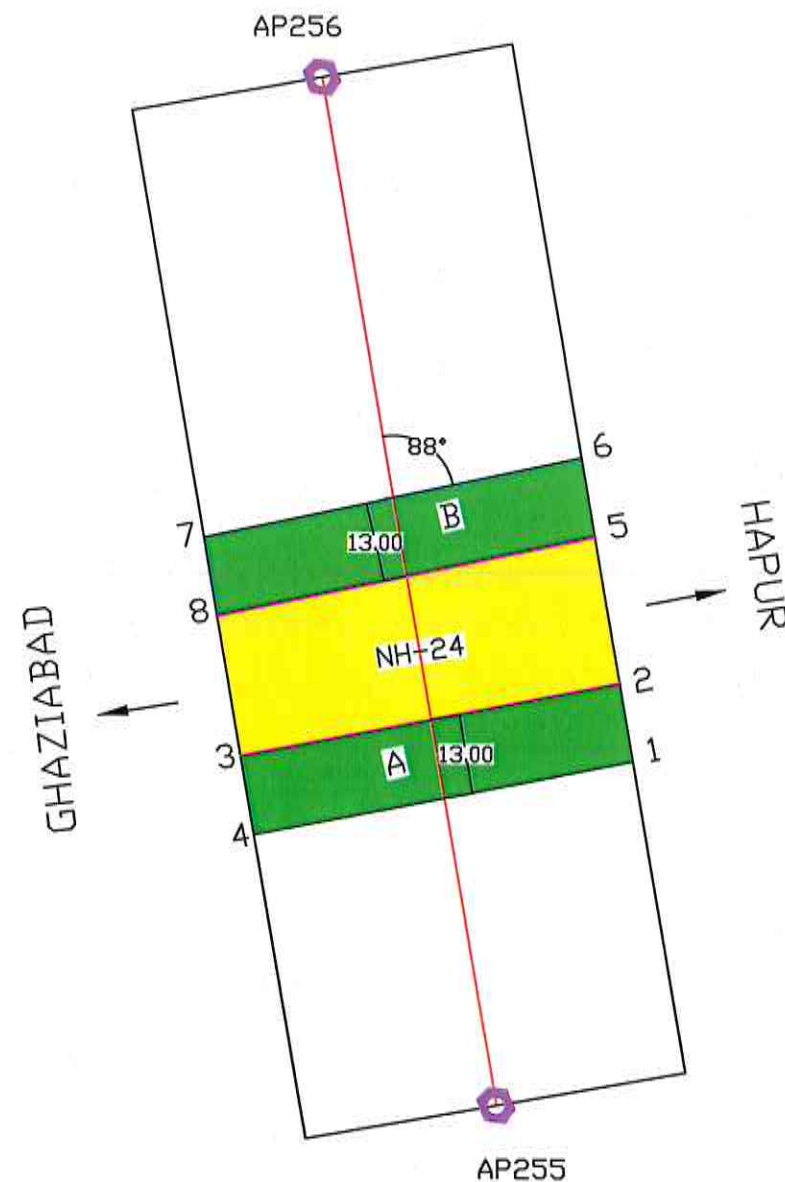
*KANPUR TRANSMISSION*  
*27/09/2019*  
*RAVJEET CHADDA*  
*KANPUR*

0 5 10 20 30 40 Meters



PROJECT:-	765 KV S/C GHATAMPUR- HAPUR TRANSMISSION LINE
User Agency:-	GHATAMPUR TRANSMISSION LIMITED
Dwg. Title:-	765 KV S/C GHATAMPUR - HAPUR PROPOSED TRANSMISSION LINE ROUTE (IN HAPUR FOREST DIV.)
DATE - 06/9/2019	DRAWING No - GTL/G-H/55

# GEO-REFERENCED MAP OF FOREST LAND PROPOSED FOR DIVERSION IN GHAZIABAD-HAPUR ROAD(NH-24) NEAR NIZAMPUR VILLAGE



FOREST AREA DGPS Coordinate's			
Area	SL NO.	Latitude(N)	Longitude(E)
	1	28°43'10.08"	77°43'10.95"
	2	28°43'10.53"	77°43'10.88"
	3	28°43'10.17"	77°43'8.55"
	4	28°43'9.74"	77°43'8.62"
	5	28°43'11.29"	77°43'10.74"
	6	28°43'11.72"	77°43'10.66"
	7	28°43'11.34"	77°43'8.35"
	8	28°43'10.93"	77°43'8.42"

## Area Calculation For A & B

$$(A) \frac{64m}{\sin(88^\circ)} \times 13 m = 832.5071409 m^2 = 0.0832507 \text{ Hectares}$$

$$(B) \frac{64m}{\sin(88^\circ)} \times 13 m = 832.5071409 m^2 = 0.0832507 \text{ Hectares}$$

$$\text{Total Forest area} = 1665.0143 m^2 = 0.1665 \text{ Hectares}$$

## Legend

- Tower location
- Forest Area DGPS Coordinates
- Railway Line
- Transmission Line Corridor in Forest Area
- Transmission line Corridor in Non Forest Area

Area Proposal of Forest			
Forest Length(m)	R.O.W. Corridor (m)	Forest Area ( m <sup>2</sup> )	Forest Area (ha.)
(13+13) 26m	64.0m	1665.0143	0.1665



PROJECT:-	765 KV S/C GHATAMPUR- HAPUR TRANSMISSION LINE
User Agency:-	GHATAMPUR TRANSMISSION LIMITED
Dwg. Title:-	765 KV S/C GHATAMPUR - HAPUR PROPOSED TRANSMISSION LINE ROUTE (IN HAPUR FOREST DIV.)
DATE - 06/9/2019	DRAWING No - GTL/G-H/55A