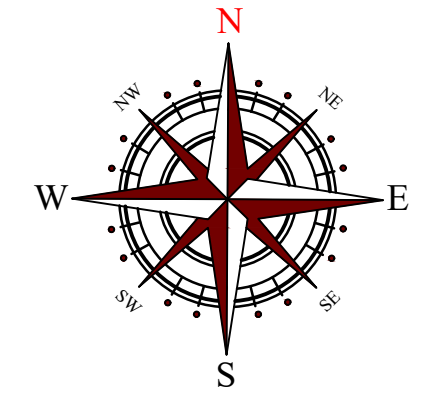
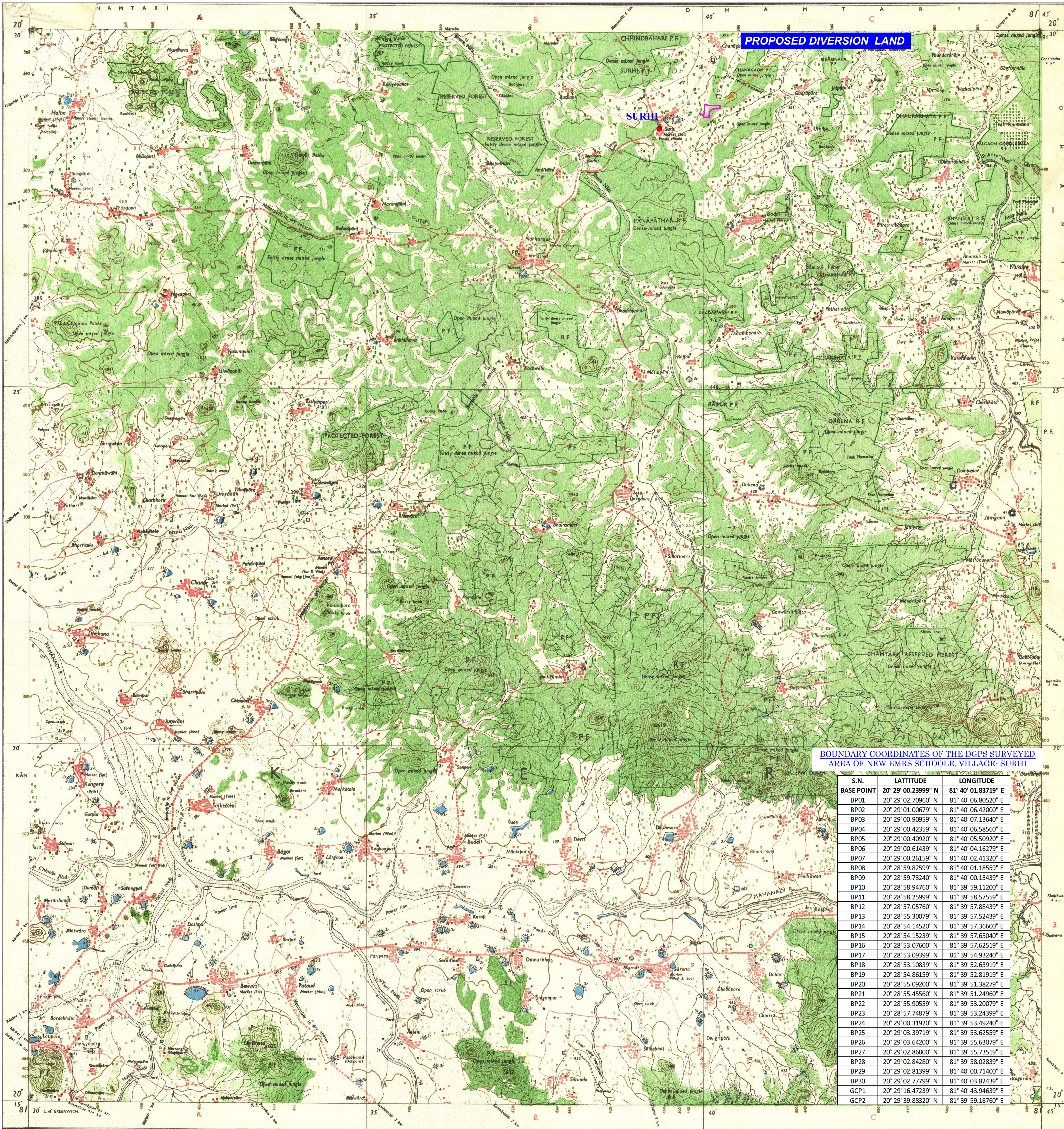


TOPOSHEET MAP (TOPOSHEET NO. 64 H/11) OF THE DGPS SURVEYED AREA FOR DIVERSION PROPOSAL OF NEW EKLAVYA MODERN RESIDENTIAL SCHOOL, AT VILLAGE SURHI, TEHSIL-NARHARPUR, DISTRICT- NORTH BASTAR KANKER, (C.G.)

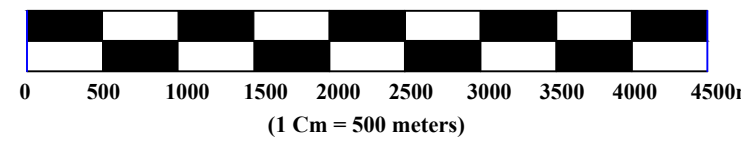


APPLICANT

Assistant Commissioner
Tribal Development
U. B. Kanker (C.G.)

ASSISTANT COMMISSIONER
TRIBAL WELFARE DEPARTMENT
DIST. - NORTH BASTAR KANKER, (C.G.)

Scale 1:50,000



MAP LEGEND

- Roads (metalled, unmetalled, etc.)
- Cart-track, Pack track, etc.
- Bridges (with pier, without, Causeway, Ford or Ferry, etc.)
- Streams (with bank, without bank, Canal, etc.)
- Dams (masonry or rock-filled, earthen, etc.)
- River banks (steep, 3 to 6 metres, over 6 metres, etc.)
- Wells (hand-dug, tube-well, etc.)
- Embankments (road or rail, etc.)
- Railways (broad gauge, metre gauge, etc.)
- Mineral (oil, coal, etc.)
- Contours (with spot heights, etc.)
- Towns or Villages (inhabited, deserted, etc.)
- Religious places (temple, church, mosque, etc.)
- Lighthouses
- Mine (open, underground, etc.)
- Palms (palmyrah, etc.)
- Boundary (international, etc.)
- State demarcation (unannounced, etc.)
- District subdivision (tahsil or taluk, forest, etc.)
- Boundary pillars (surveyed, unsurveyed, etc.)
- Height (triangulation, etc.)
- Bench-mark (geodetic, tertiary, etc.)
- Post office (Telegraph office, Combined office, Police station, etc.)
- Bungalows (for travellers, inspection, etc.)
- Circuit house (camping ground, forest, etc.)
- Spaced names (administrative, locality or tribal, etc.)

REVENUE FOREST LAND

BOUNDARY COORDINATES OF THE DGPS SURVEYED AREA OF NEW EMRS SCHOOLE, VILLAGE- SURHI

S.N.	LATITUDE	LONGITUDE
BASE POINT	20° 29' 00.23999" N	81° 40' 01.83719" E
BP01	20° 29' 02.70960" N	81° 40' 06.80520" E
BP02	20° 29' 01.00679" N	81° 40' 06.42000" E
BP03	20° 29' 00.90959" N	81° 40' 07.13640" E
BP04	20° 29' 00.42359" N	81° 40' 06.58560" E
BP05	20° 29' 00.40920" N	81° 40' 05.50920" E
BP06	20° 29' 00.61439" N	81° 40' 04.16279" E
BP07	20° 29' 00.26159" N	81° 40' 02.41320" E
BP08	20° 28' 59.82599" N	81° 40' 01.18559" E
BP09	20° 28' 59.73240" N	81° 39' 59.11200" E
BP10	20° 28' 58.94760" N	81° 39' 58.57559" E
BP11	20° 28' 58.25999" N	81° 39' 57.88439" E
BP12	20° 28' 57.05760" N	81° 39' 57.52439" E
BP13	20° 28' 55.30079" N	81° 39' 57.36600" E
BP14	20° 28' 54.14520" N	81° 39' 57.65040" E
BP15	20° 28' 53.07600" N	81° 39' 57.62519" E
BP16	20° 28' 53.09399" N	81° 39' 54.93240" E
BP17	20° 28' 53.10839" N	81° 39' 52.63919" E
BP18	20° 28' 54.86159" N	81° 39' 52.81919" E
BP19	20° 28' 55.09200" N	81° 39' 51.38279" E
BP20	20° 28' 55.45560" N	81° 39' 51.24960" E
BP21	20° 28' 55.90559" N	81° 39' 53.20079" E
BP22	20° 28' 57.74879" N	81° 39' 53.24399" E
BP23	20° 29' 00.31920" N	81° 39' 53.49240" E
BP24	20° 29' 03.39719" N	81° 39' 53.62559" E
BP25	20° 29' 03.64200" N	81° 39' 55.63079" E
BP26	20° 29' 02.86800" N	81° 39' 55.73519" E
BP27	20° 29' 02.84280" N	81° 39' 58.02839" E
BP28	20° 29' 02.81399" N	81° 40' 00.71400" E
BP29	20° 29' 02.77799" N	81° 40' 03.82439" E
GCP1	20° 29' 16.47239" N	81° 40' 43.94639" E
GCP2	20° 29' 39.88320" N	81° 39' 59.18760" E

LAND DETAIL

District/Forest Division	Tehsil / Range	Village	Type of Land	Khasra Number	Surveyed Area (In Hect.)
NORTH BASTAR KANKER	NARHARPUR	SURHI	REVENUE FOREST	468/1	6.5
TOTAL					6.5

MAP NO. - 3

PREPARED BY,

वन मंडलाधिकारी
सुभाष चंद्र वन मंडल कार्यालय



AVI CONSULTANCY SERVICES
34/945, Dr. RAJENDRA NAGAR, NEAR GOVARDHAN CROWK,
RAIPUR - 492001 (C.G.)
Email - avi_cspr@rediffmail.com