


MAP SHOWING THE FLOW LINE KSAG TO KSAB

N



विपणन के लिए नहीं NOT FOR EXPORT

OPEN SERIES MAP

No. G46K3

Scale 1:50,000

G46J14 (83F/14)	G46K2 (83J/2)	G46K6 (83J/6)
G46J15 (83F/15)	G46K3 (83J/3)	G46K7 (83J/7)
G46J16 (83F/16)	G46K4 (83J/4)	G46K8 (83J/8)

1. Kārti Anglong, ASSAM.

भारतीय सर्वेक्षण विभाग SURVEY OF INDIA

1st Edition 2011. Price : Rs. 77/-

CONVENTIONAL SYMBOLS

Express highway with toll, with bridge, with distance stone

Roads, metalled according to importance

Unmetalled road. Cart track. Pack-track with yoke. Foot-path

Railways, with track or not, according to importance

Dams, masonry or rock-filled, with spillways

River dry with water channel, with island & rocks. Tidal river

Rubber-gum plantation. Swampy ground

Wells, lined, unlined. Tube well. Spring. Tank. Reservoir, dry

Embankments, road or rail, bank. Broken ground

Railways, least gauge, double, single with station, end-on-station

Railways, other gauges, double, single with station, end-on-station

Mineral line or terminus. Kiosk. Cattle shed. Tunnel

Contours with spot-heights. Rocky slopes. Cliffs

Sand features (Mud. Shaded hill/plateau). (Shaded hill/plateau)

Towns or Villages, inhabited, deserted, (Fort)

Huts, permanent, temporary. Tower. Antenna

Temple. Church. Mosque. Gurdwara. Turf. Dargah

Lighthouse. Lightship. Buoy. Lighted, unlighted. Anchorage

Mine. View on hillside. Grass. Scrub

Palms. Papyrus. Other. Plantain. Conifer. Bamboo. Other trees

Avenue. Cultivated. Wooded. Surveyed line

Boundary, international

State boundary, undemarcated

State boundary, demarcated, with or without line

Boundary pillars, surveyed, uncoloured

Height, triangulation station, point, approximate

Bench-mark, geodetic, tertiary, canal

Post office. Telegraph office. Overhead tank

Real house or inspection bungalow. Casual house. Police station

Camping ground. Forest, reserved, protected

Spotted names, administrative, locality, tribal

Hospital. Dispensary. Veterinary Hospital / Dispensary

Airfield. Helipad. Tourist site

Power line, with pylons surveyed, with poles unsurveyed

REFERENCES

WB: Wooden bridge. TG: Tea garden.

NOTES :-

Heights and contours have not been shown.

A relative height, e.g., depression, the approximate height, in metres, between the top and bottom of a steep slope.

The state boundary between Assam and Nagaland State shown in this map is as interpreted from North-Eastern area (Boromakha) Act, 1971, but has yet to be verified.

District boundary between Golaghat and Jorhat district surveyed on the ground as pointed out by local officials but has yet to be verified by concerned authorities.

Names and Subdivision boundaries in this sheet have not been shown for want of reliable information.

Allegations shown in this sheet are commonly worshipping places.

Shrine or temporarily cultivated areas occur throughout the jungle, they are normally abandoned after 2-3 years and are not shown.

Settlement areas are shown as follows :-

COMPILED INDEX

A Surveyed during 1971-72. Updated for major details during 1990-91 and 2005-06.

Projection - UTM Datum - WGS 84

Magnetic Variation from True North about - West in 2005 (Increasing by about 1° annually)

Scale 1:50,000

500 m to 1 cm 1:50,000 2 cm to 1 km

For further details about this map, please contact

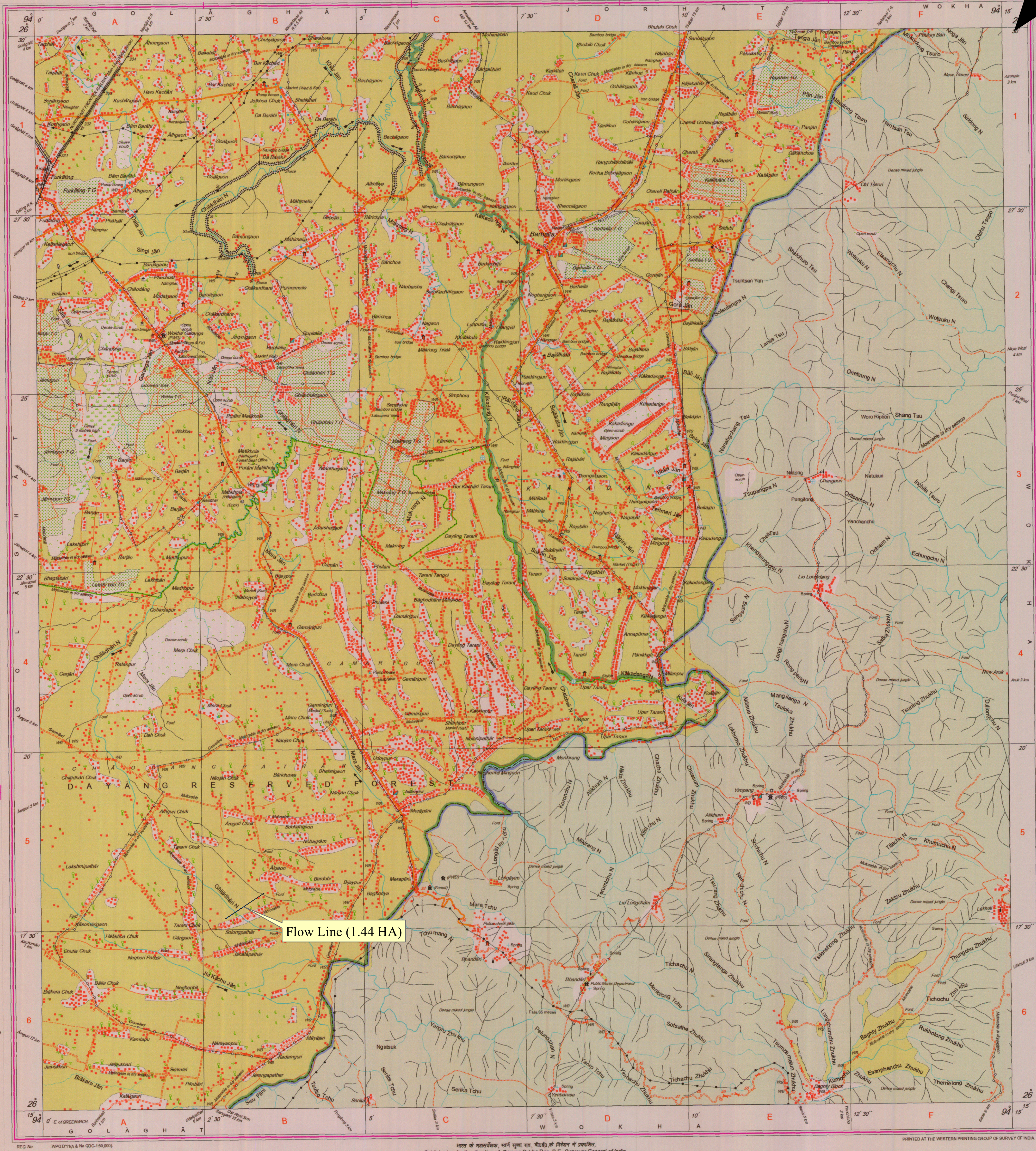
Director, Assam and Nagaland GDC

Survey of India, Ganeshguri Chariali, Dispur, Guwahati.

WEBSITE - [www.surveyofindia.gov.in](http://www.surveyofindia.gov.in)

Reproduction in whole or part by any means is prohibited without the written permission of Survey of India, the National Mapping Agency.

GOVERNMENT OF INDIA COPYRIGHT, 2011.



Scale 1:50000

Legend

x Flow Line Points

Drill Site Area

D.G.P.S. COORDINATES OF FLOW LINE

X	Y
A:604578.597	2908692.184
B:604571.76	2908702.61
C:605573.084	2909356.409
D:605567.534	2909366.585

Drill Site Area: 1.44 Hectares.

Estimated Length : 1200 mt. , Average width : 12 mt

S. J. BHURIA  
CE (Civil), UC LAO  
A&AB, ONGC, Jorhat