

Name of Project: Diversion of 0.1544 ha. Reserved Forest land for the grant permission for laying GFGNL Optical Fiber Cable line in reserved forest area of Kadana Taluka Villages, Dist. Mahisagar in Gujarat state.

INDIA
REFER TO THIS MAP AS:- 1:50,000
SHEET 46 E/15 FIRST EDITION

PANCH MAHĀLS DISTRICT.
BĀNSVĀRA & DUNGARPUR DISTRICTS.

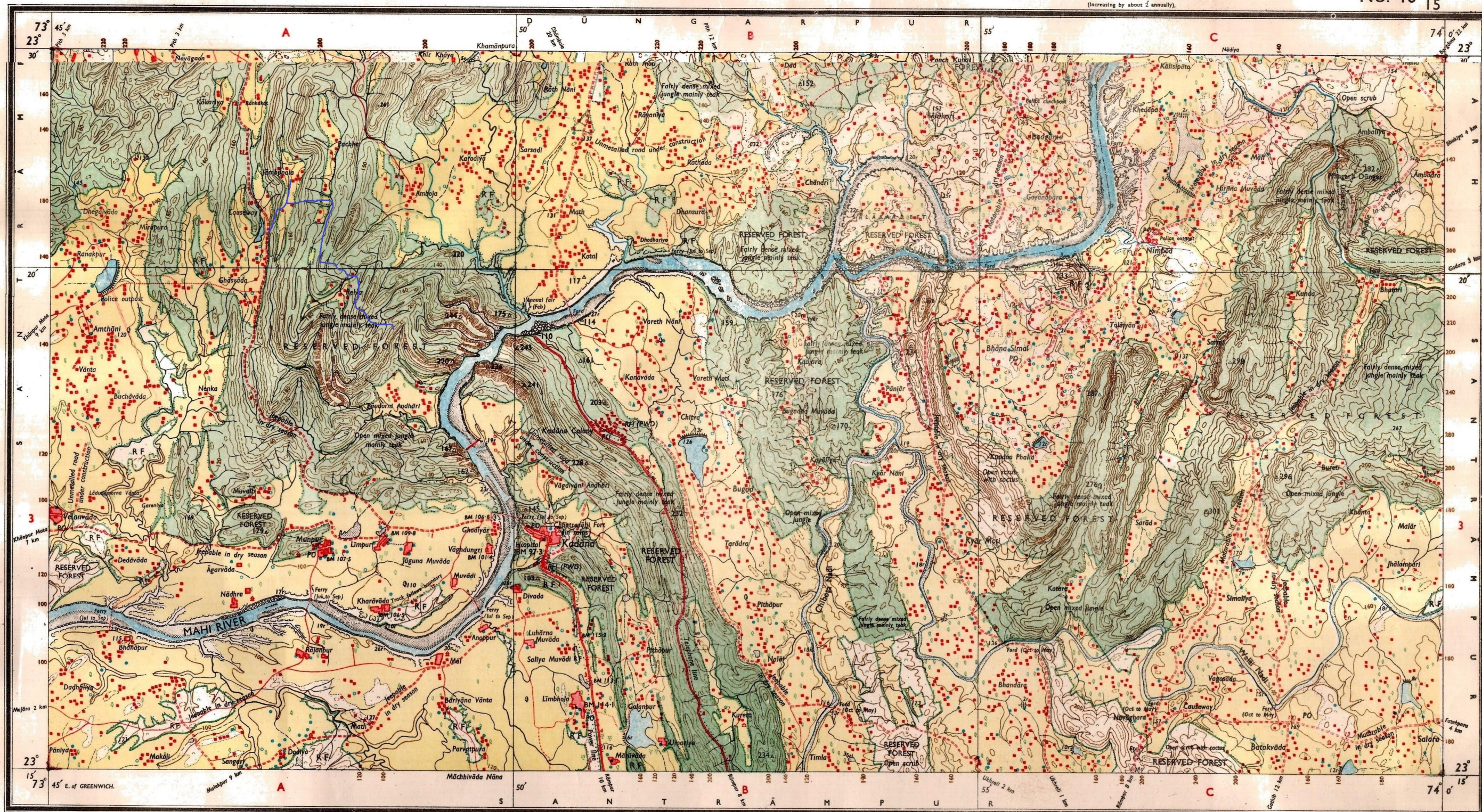
Surveyed 1967-68.

GUJARĀT, RĀJASTHĀN

FIRST EDITION

Magnetic Variation from True North about 3° West in 1965.
(Increasing by about 2° annually).

No. 46 E/15

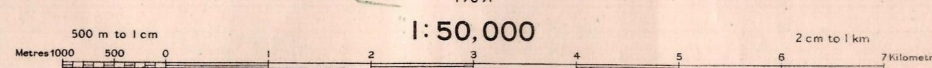


Res. No. 2031 HD/69 (D.O. 3-1-33.333)-62/74-330/4/90-450/6/88 - 7010/2001.

Roads, metalled: according to importance; distance stone	2
unmetalled: do.	1
Cart-track. Pack-track and pass. Foot-path with bridge	1
Bridges: with pier; without. Causeway. Ford or Ferry	1
Streams: with track in bed; undefined. Canal	1
Dams: masonry or rock-filled; earthwork. Weir	1
River banks: shelving; steep 3 to 6 metres; over 6 metres	1
dry with water channel; with island & rocks; tidal river	1
Submerged rocks. Shoal. Swamp. Reeds	1
Wells: lined; unlined. Tube-well. Spring. Tanks: perennial; dry	1
Embankments: road or rail; tank. Broken ground	1
Railways: broad gauge: double; single with station; under constr.	1
other gauges: do. do. with distance stone; do.	1
Mineral line or tramway. Telegraph line. Cutting with tunnel	1
Contours with sub-features: Rocky slopes. Cliffs	1
Sand features: (1) flat; (2) sand hills and dunes; (3) shifting dunes	1

Index to Sheets

46 E/10	46 E/14	46 E/2
46 E/11	46 E/15	46 E/3
46 E/12	46 E/16	46 E/4

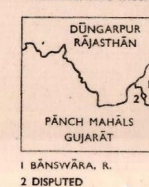


HEIGHTS & CONTOURS IN METRES
CONTOUR INTERVAL 20 METRES

Water features are shown in blue where they generally contain water.
Cultivated areas are coloured yellow.
The exterior boundaries of areas of Reserved or Protected Forests are shown by green ribands.

Contours are approximate.
A relative height, Δ , represents the approximate height, in metres, between the top and bottom of a steep slope.
Wooded areas are coloured green. Scattered trees and other vegetation are in green, but prominent surveyed trees are in black.

Administrative Index



Towns or Villages: inhabited; deserted; Fort	1
Huts: permanent; temporary. Tower. Antiquities	1
Temple. Chhatra. Church. Mosque. Idgah. Tomb. Graves	1
Lighthouse. Lightship. Buoy: lighted; unlighted. Anchorage	1
Mine. Vine on trellis. Grass. Scrub	1
Palms: palmyra; other. Plantain. Conifer. Bamboo. Other trees	1
Boundary: international	1
state: demarcated; undemarcated	1
district: subdivided; tahsil or taluk; forest	1
Boundary pillars: surveyed; unlocated; village junction	1
Heights: triangulated; station; point: approximate	1
Bench-mark: geodetic; tertiary; canal	1
Post office. Telegraph office. Combined office. Police station	1
Bungalows: dak or travellers; inspection. Rest-house	1
Circuit house. Camping ground. Forest: reserved; protected	1
Spaced names: administrative; locality or tribal	1

1st Edition 1969.
Previous Edition on 1-inch scale: 1st (Provisional) 1946.

Reference

Proposed OFC Line Route

REFER TO THIS MAP AS:- 1:50,000
SHEET 46 E/15 FIRST EDITION

The triangulated heights and contours in this sheet have not been adjusted to the heights of the spirit-levelled bench-marks and may not be strictly in accordance with them.
The kilometre stone numbers along roads are shown in slant type, e.g. '5' whereas milestone numbers are shown in upright type, e.g. '5'.
Tanks shown dry in this area usually contain water from July to March.
Mahi River is generally fordable from October to June.
The state boundary between Gujarat and Rajasthan States has been surveyed as pointed out by the local officials on the ground, but has not been verified by the Government of Rajasthan.

GOVERNMENT OF INDIA COPYRIGHT, 1969.
Price: Twenty nine Rupees.