

No. F43A16

Scale 1:50,000

F43A11 (46A/11)	F43A15 (46A/15)	F43B3 (46E/3)
Gandhinagar GUJARAT F43A12 (46A/12)	F43A16 (46A/16)	F43B4 (46E/4)
Ahmadabad GUJARAT F43G9 (46B/9)	F43G13 (46B/13)	Kheda GUJARAT F43H1 (46F/1)

भारतीय सर्वेक्षण विभाग SURVEY OF INDIA

1st Edition 2011.

Price : Rs. 77/-

CONVENTIONAL SYMBOLS

Express highway with toll, with bridge, with distance stone	
Roads, metalled according to importance	
Roads, double cartage-way according to importance	
Unmetalled road, Cart-track, Pack-track with pass, Foot-path	
Streams with track in bed, underlined, Canal	
Dams: masonry or rock-filled, earthwork, Weir	
River dry with water channel, with island & rocks, Tide river	
Submerged rocks, Shoal, Swamp, Reeds	
Wells: hand-dug, Tubewell, Spring, Tanks: permanent, dry	
Embankments: road or rail, tank, Broken ground	
Railways, broad gauge: double, single with station, under canopy	
Railways, other gauges: double, single with distance stone, do.	
Mineral line or tramway, Kin. Cutting with tunnel	
Contours with sub-features: Rocky slopes, Cliffs	
Sand features (Tidal, (Dryland-ridge) permanent), (Dryland-shifting)	
Towns or Villages: inhabited, deserted, Fort	
Huts: permanent, temporary, Tower, Antiquities	
Temple, Chhatra, Church, Mosque, Jagin, Tomb, Graves	
Lighthouse, Lightship, Buoy, Lighted, unlighted, Anchorage	
Mine: Veta on bell, Grass, Sand	
Palms: spiny, other, Plantain, Coffer, Benana, Other trees	
Areas: cultivated, wooded, Surveyed tree	
Boundary: international	
State: demarcated, undemarcated	
District: subdivided, taluk or thuk, forest	
Boundary pillars: surveyed, unlocated	
Heights, triangulated: station, point: approximate	
Bench-mark: geodetic, tertiary, canal	
Post office: overhead tank	
Rest house or inspection bungalow, Circular house, Police station	
Camping ground: Forest: reserved, protected	
Special names: administrative, locality or tribal	
Hospital, Dispensary, Veterinary hospital / Dispensary	
Aerodrome: Helped, Tourist site	
Power line, with pylons surveyed, with poles unsurveyed	

REFERENCE

NH 59 National Highway No. 59

NOTES

Heights and contours are in metres and above Indian mean sea level.  
Contours are approximate.  
A relative height, as represented by the top and bottom of a wave above.  
The triangulated heights and contours in this sheet have not been adjusted to the heights of the spirit levelled bench-marks and may not be strictly in accordance with them.  
Tanks, shown dry, in this area usually contain water from July to October.  
Cultural features generally exist along canals and forest areas.  
Administrative boundary has been accepted from VSI project data 2005.

COMPILATION INDEX

A Compiled from 1:25,000 surveyed during 1956-57



Projection - UTM Datum - WGS 84

Magnetic Variation from True North about 1° West in 2005.  
(Decreasing by about 1° annually).

1:50,000

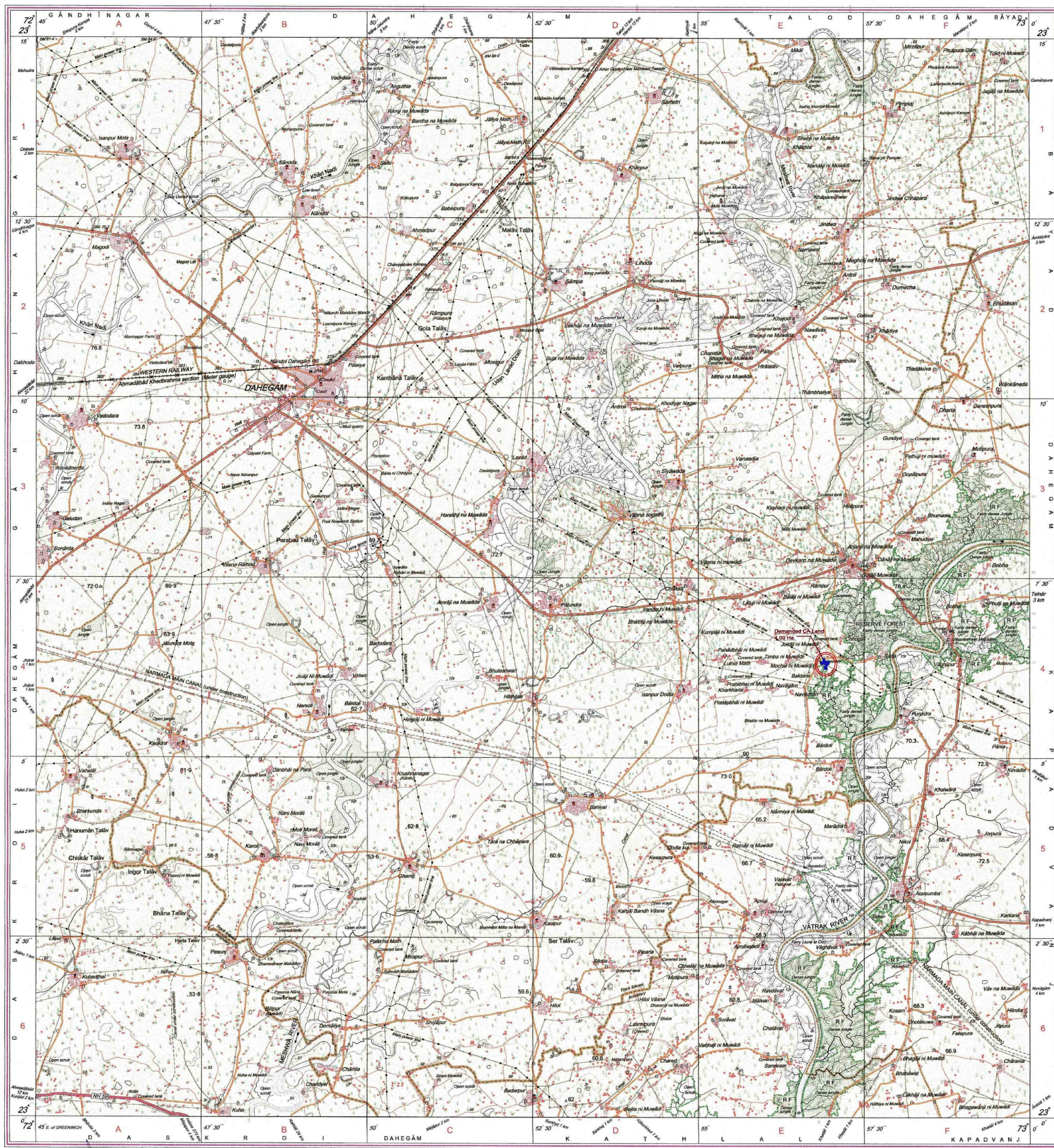
300 m to 1 cm  
Metres 1000 500 0 1 2 3 Kilometres  
CONTOUR INTERVAL 20 METRES

For further details about this map, please contact  
Director  
Gujarat, Daman & Diu Geo-Spatial Data Centre  
Survey of India, Sector 10-A  
Gandhinagar.

WEBSITE : www.surveyofindia.gov.in

Reproduction in whole or part by any means is prohibited  
without the written permission of Survey of India, the  
National Mapping Agency.

GOVERNMENT OF INDIA COPYRIGHT, 2011.



REG. No. - SPD 011 (SPD 000/000000)

LEGEND

DEMANDED CA LAND 4.00 HA.  
BARIYA, TA- DEHGAM, DI- GANDHINAGAR SR. NO.  
146

भारत के मानचित्र, सर्वेक्षण, चार्ट, के निर्माण में प्रयोग,  
Published under the direction of Swarna Subba Rao, S.E. Surveyor General of India,  
Survey of India, Hithibankala Estate, Post Box No. 37, Dehra Dun-248001 (Uttarakhand)  
Department of Science & Technology, Government of India.

PRINTED AT THE SOUTHERN PRINTING GROUP OF SURVEY OF INDIA.