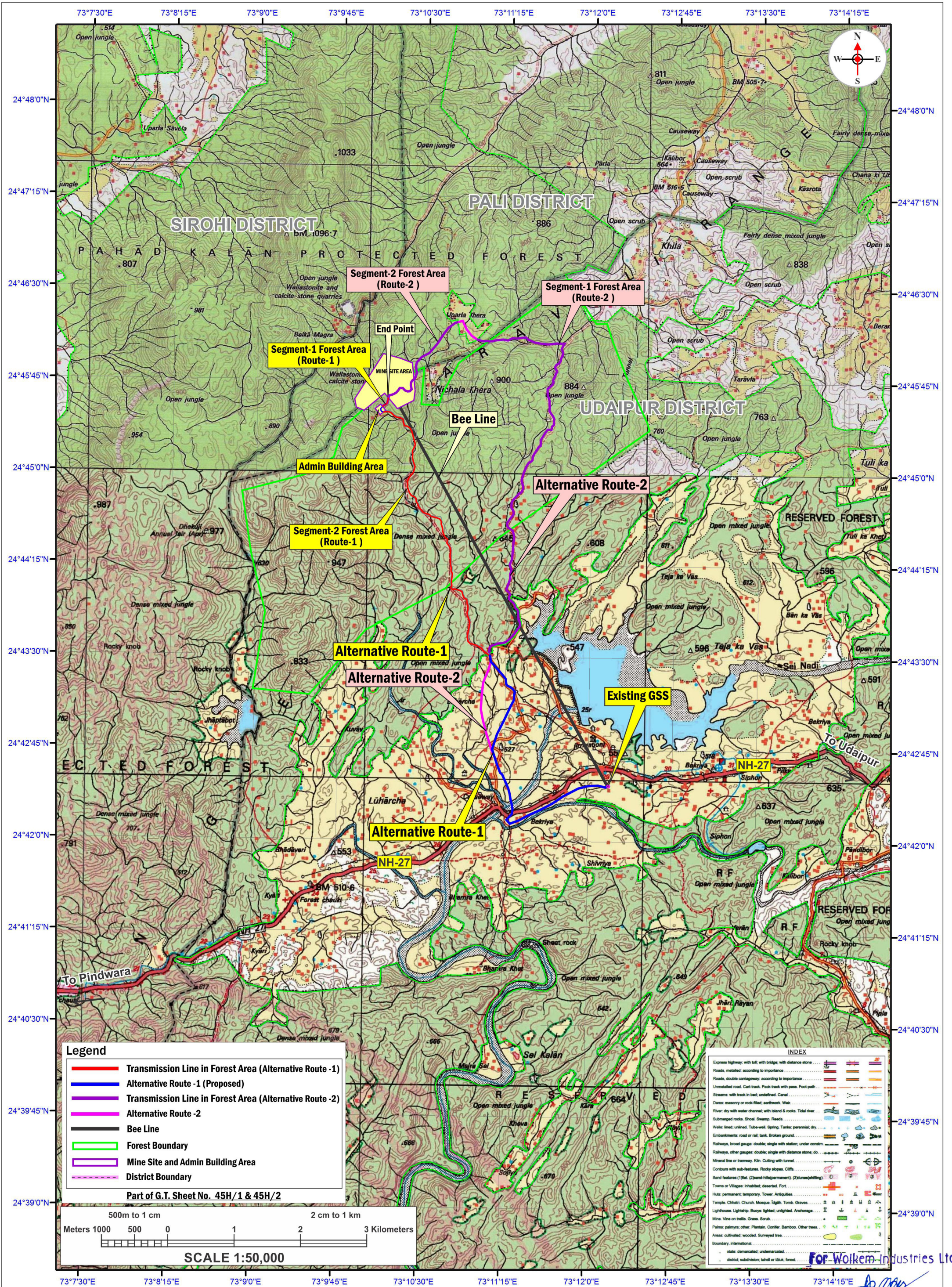


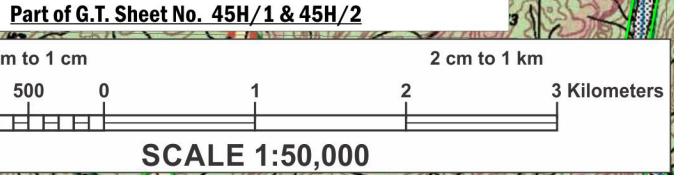
MAP SHOWING GEO REFERENCED SOI TOPOSHEET MAP OF ALTERNATIVE ROUTE ALIGNMENT

Project Name : Construction of 11 KV HT line from 33/11 KV Bekariya Substation to Wolkem Industries Ltd. Kheratarla Mine Situated near Uparla and Nichala Khera, Tehsil - Bali & Kotra , Dist. - Pali & Udaipur, Raj.

Proposal No. : FP/R J/TRANS/142368/2021 (Applied Area - 3.3896 Hectare)



- Legend**
- Transmission Line in Forest Area (Alternative Route -1)
 - Alternative Route -1 (Proposed)
 - Transmission Line in Forest Area (Alternative Route -2)
 - Alternative Route -2
 - Bee Line
 - Forest Boundary
 - Mine Site and Admin Building Area
 - District Boundary



INDEX

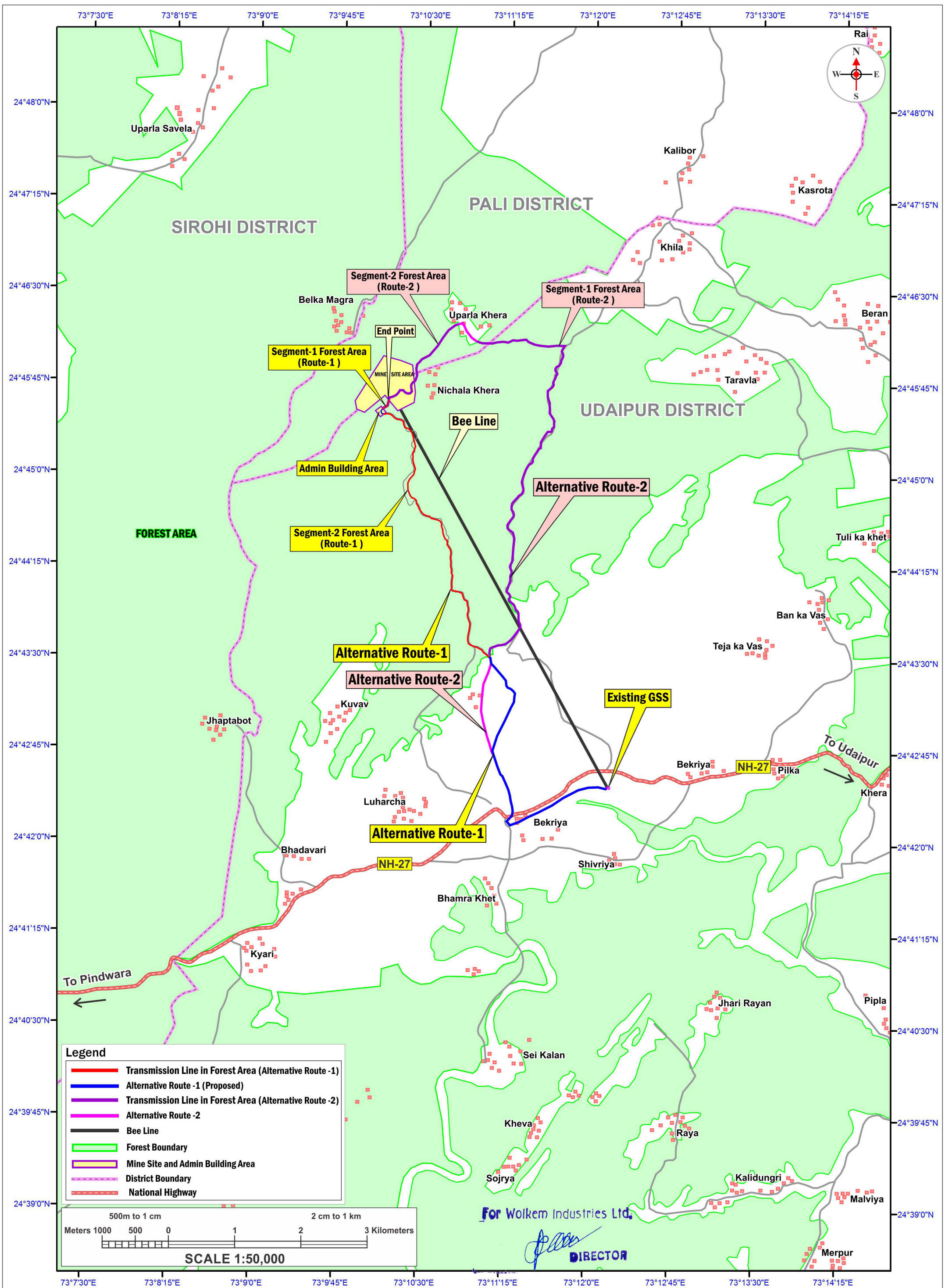
Express highway, with toll, with bridge, with distance stone	
Roads, metalled, according to importance	
Roads, double cartway, according to importance	
Unmetalled road, Cart-track, Pack-track with pass, Foot-path	
Streams, with track in bed, undefined, Canal	
Dams, masonry or rock-filled, earthwork, Weir	
River, dry with water channel, with island & rocks, Tidal river	
Submerged rocks, Shoal, Swamp, Reeds	
Wells, lined, unlined, Tube-well, Spring, Tanks, perennial, dry	
Embankments: road or rail, bank, Broken ground	
Railways, broad gauge, double, single with station, under constn.	
Railways, other gauges: double, single with distance stone, do.	
Mineral line or tramway, Kin, Cutting with tunnel	
Contours with sub-features, Rocky slopes, Cliffs	
Sand features: (1) Flat, (2) Sand-hill(permanent), (3) Sand-shifting	
Towns or Villages: inhabited, deserted, Fort	
Huts, permanent, temporary, Tower, Antiquities	
Temple, Chhatra, Church, Mosque, Igah, Tomb, Graves	
Lighthouse, Lightship, Buoy, lighted, unlighted, Anchorage	
Mine, Vise on trails, Grass, Scrub	
Palms: palmyrs, other, Plantain, Conifer, Bamboo, Other trees	
Areas: cultivated, wooded, Surveyed tree	
Boundary, international	
state, demarcated, undemarcated	
district, subdivision, taluk or taluk, forest	

For Wolkem Industries Ltd.
DIRECTOR

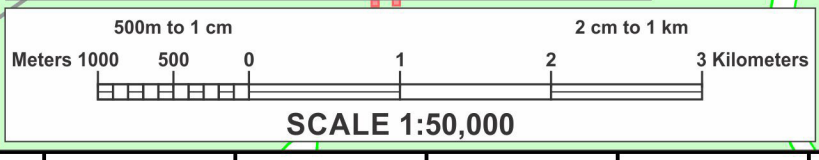
MAP SHOWING GEO REFERENCED DIGITAL MAP OF ALTERNATIVE ROUTE ALIGNMENT

Project Name : Construction of 11 KV HT line from 33/11 KV Bekariya Substation to Wolkem Industries Ltd. Kheratarla Mine Situated near Uparla and Nichala Khera, Tehsil - Bali & Kotra , Dist. - Pali & Udaipur, Raj.

Proposal No. : FP/R J/TRANS/142368/2021 (Applied Area - 3.3896 Hectare)



- Legend**
- Transmission Line in Forest Area (Alternative Route -1)
 - Alternative Route -1 (Proposed)
 - Transmission Line in Forest Area (Alternative Route -2)
 - Alternative Route -2
 - Bee Line
 - Forest Boundary
 - Mine Site and Admin Building Area
 - District Boundary
 - National Highway



For Wolkem Industries Ltd.

[Signature]
DIRECTOR



Full Title of the Project: "Diversion of 3.3896 hectare Forest Land for Construction of 11 KV HT line from 33/11 KV Bekariya Substation to Wolkem Industries Ltd. Kheratarla Mine Situated near Uparla and Nichala Khera, Tehsil – Bali & Kotra , District – Pali & Udaipur, Rajasthan".

Proposal No. : FP/RJ/TRANS/142368/2021

Date of Proposal : 18/05/2021

Applied Forest Area : 3.3896 hectare

COMPARATIVE STATEMENT OF ALTERNATIVE ROUTE

Description	Route 1 (Proposed)	Route-2
Bee Line Length (km.)	6.741	6.741
Line Length (Km.)	9.524	13.939
No. of angle points	155	180
Type of Land	Stony and open Area	Stony and open Area
Nos. of N.H Crossing	1	1
Nos. of Power line crossing	Nil	Nil
Nos. of Railway Line Crossing	Nil	Nil
Nos. of River/Canal Crossing	Nil	Nil
Line Length involved in forest Area (km)	4.84229	8.874
Forest area required to be diverted (Hact.)	3.3896	6.2118

From the above comparative statement , Alternative Route – I is the Most Suitable due to less Involvement of Forest land comparative to Alternative –II, Hence. The Route 1 is best suitable route for Construction of 11 KV HT line from 33/11 KV Bekariya Substation to Wolkem Industries Ltd. Kheratarla Mine Situated near Uparla and Nichala Khera, Tehsil – Bali & Kotra , District – Pali & Udaipur, Rajasthan.

WOLKEM INDUSTRIES LIMITED

(U.P. PAHADIYA)

Signature of User Agency

Office Seal

Place: Udaipur

Date: 22.02.2022

Counter signed by:-

Divisional Forests Officer

Udaipur North Forest Division

Office Seal _____