



नियमित के लिए नहीं NOT FOR EXPORT

OPEN SERIES MAP

No. F43A14

Scale 1:50,000

F43A9 (46A/9)	F43A13 (46A/13)	F43B1 (46E/1)
Mahesana GUJARAT F43A10 (46A/10)	F43A14 (46A/14)	Sābar Kāntha GUJARAT F43B2 (46E/2)
F43A11 (46A/11) Gāndhinagar GUJARAT	F43A15 (46A/15)	F43B3 (46E/3)

1 Bānās Kāntha, GUJARAT.

भारतीय सर्वेक्षण विभाग SURVEY OF INDIA

1st Edition 2018.

Price : ₹ 118/-

CONVENTIONAL SYMBOLS

- Express highway: with toll; with bridge; with distance stone
- Roads, metalled: according to importance
- Roads, double carriageway: according to importance
- Unmetalled road. Cart-track. Pack-track with pass. Foot-path
- Streams: with track in bed; undefined. Canal
- Dams: masonry or rock-filled; earthwork. Weir
- River: dry with water channel; with island & rocks. Tidal river
- Submerged rocks. Shoal. Swamp. Reeds
- Wells: lined; unlined. Tube-well. Spring. Tanks: perennial; dry
- Embankments: road or rail. tank. Broken ground
- Railways, broad gauge: double; single with distance stone; do.
- Railways, other gauges: double; single with distance stone; do.
- Mineral line or tramway. Kiln. Cutting with tunnel
- Contours with sub-features. Rocky slopes. Cliffs
- Sand features: (1) flat. (2) sand-hills(permanent). (3) dunes(shifting)
- Towns or Villages: inhabited; deserted. Fort
- Huts: permanent; temporary. Tower. Antiquities
- Temple. Chhattri. Church. Mosque. Light. Tomb. Graves
- Lighthouse. Lightship. Buoys: lighted; unlighted. Anchorage
- Mine. Vine on trellis. Grass. Scrub
- Palms: palmyra; other. Plantain. Conifer. Bamboo. Other trees
- Areas: cultivated; wooded. Surveyed tree
- Boundary, international
- state: demarcated; undemarcated
- district; subdivision; tahsil or taluk; forest
- Boundary pillars: surveyed; unlocated
- Heights, triangulated station; point; approximate
- Bench-mark: geodetic; tertiary; canal
- Post office. Overhead tank
- Rest house or inspection bungalow. Circuit house. Police station
- Camping ground. Forest: reserved; protected
- Spaced names: administrative; locality or tribal
- Hospital. Dispensary. Veterinary. Hospital / Dispensary
- Aerodrome. Helipad. Tourist site
- Power line: with pylons surveyed; with poles unsurveyed
- DEMANDED CA LAND 2.00 HA

REFERENCES

NH 8 National Highway No. 8 SW Stony waste

NOTES

Heights and contours are in metres.
Contours are approximate.
A relative height, e.g., 8r, represents the approximate height, in metres, between the top and bottom of a steep slope.
Tanks, shown dry in this area, usually contain water from July to October.
Cactus hedges generally exist along cart-tracks and field bunds.
Numerous wells and tube-wells exist in cultivated areas, only the important ones have been shown.
Administrative boundaries accepted from VGS project data (2008). Hence it is not matching with adjoining sheet no. 46A/10.

COMPILATION INDEX

A Surveyed during 1967-68
Updated for major details from 1:25,000 surveyed, 1995-99.

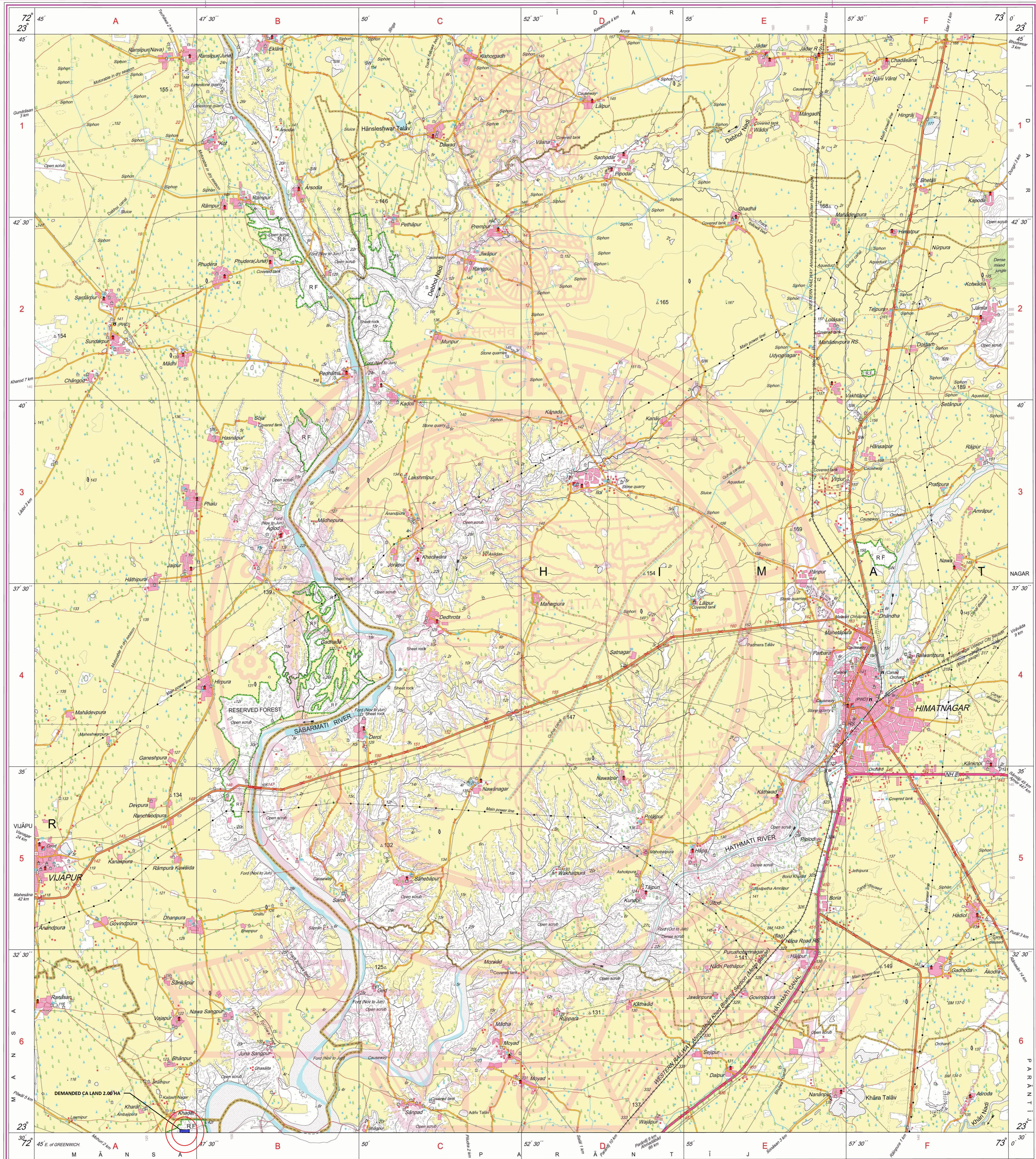
Projection - UTM Datum - WGS 84
Magnetic Variation from True North about 1/4° West in 2005.
(Decreasing by about 1" annually.)
Scale 1:50,000
500 m to 1 cm
2 cm to 1 km
CONTOUR INTERVAL 20 METRES

For further details about this map, please contact
Director
Gujarat, Daman & Diu Geo-Spatial Data Centre
Survey of India, Sector 10(A)
Gāndhinagar.

WEBSITE - www.surveyofindia.gov.in

Reproduction in whole or part by any means is prohibited without the written permission of Survey of India, the National Mapping Agency.

GOVERNMENT OF INDIA COPYRIGHT, 2018.



भारत के सर्वेक्षण विभाग के द्वारा तैयार किया गया है, विभिन्न सेवा मंडलों के निदेशों के अनुसार।
Published under the direction of Lt Gen Gish Kumar, VSM - Surveyor General of India,
Survey of India, Hattibakkala Estate, Post Box No.37, Dehra Dun-248001 (Uttarakhand),
Department of Science & Technology, Government of India.

PRINTED AT THE NATIONAL GEOSPATIAL DATA CENTRE OF SURVEY OF INDIA.