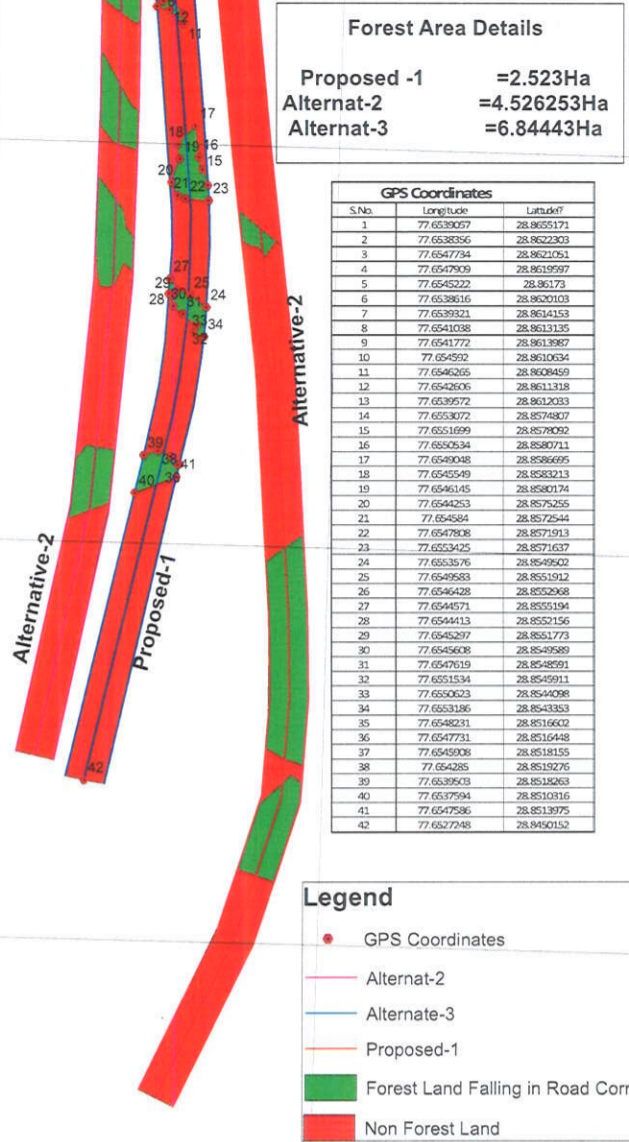
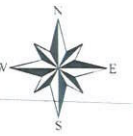
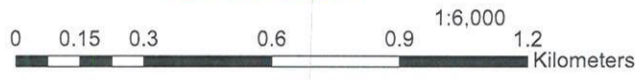
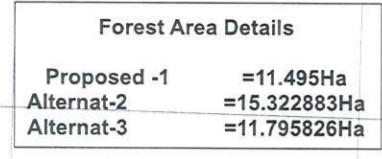


# Digital Georeferenced Map Forest Land Proposed to be diverted with two alternatives for part of Delhi-Meerut Expressway (Greenfield Project) passing through Forest Block Chriyala Forest Division Ghaziabad in Ghaziabad District




*Smel*  
 परियोजना निदेशक / Project Director  
 भारतीय राष्ट्रीय राजमार्ग प्राधिकरण  
 National Highway Authority of India  
 गाजियाबाद / Ghaziabad



# Digital Georeferenced Map Forest Land Proposed to be diverted with Two alternatives for part of Delhi-Meerut Expressway(Greenfield Project)passing over Upper Ganga Canal Forest Division Ghaziabad in Ghaziabad District



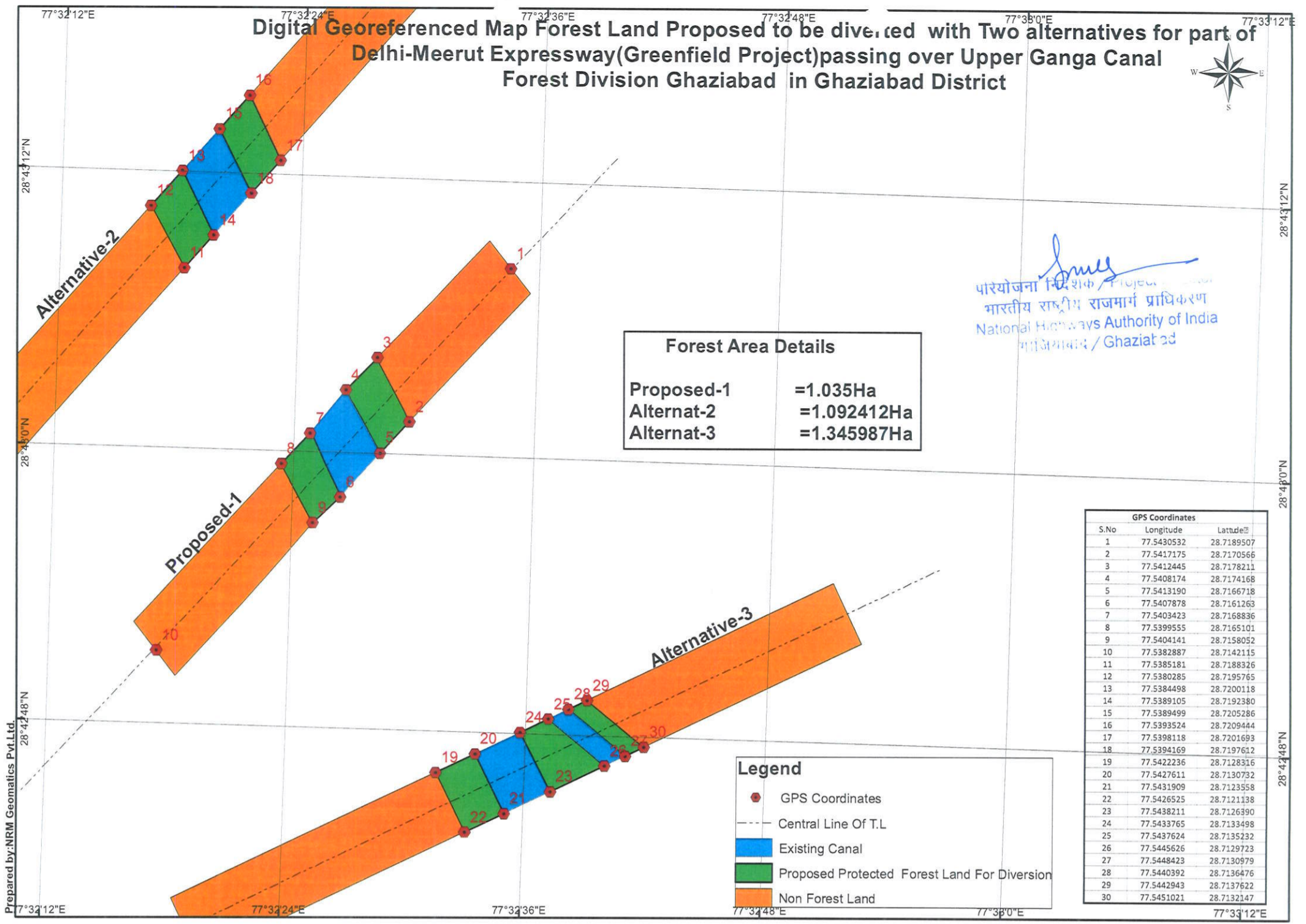
  
 पारियोजना निदेशक / निदेशक  
 भारतीय राष्ट्रीय राजमार्ग प्राधिकरण  
 National Highways Authority of India  
 गाज़ियाबाद / Ghaziabad

| Forest Area Details |             |
|---------------------|-------------|
| Proposed-1          | =1.035Ha    |
| Alternat-2          | =1.092412Ha |
| Alternat-3          | =1.345987Ha |

| GPS Coordinates |            |            |
|-----------------|------------|------------|
| S.No            | Longitude  | Latitude   |
| 1               | 77.5430532 | 28.7189507 |
| 2               | 77.5417175 | 28.7170566 |
| 3               | 77.5412445 | 28.7178211 |
| 4               | 77.5408174 | 28.7174168 |
| 5               | 77.5413190 | 28.7166718 |
| 6               | 77.5407878 | 28.7161263 |
| 7               | 77.5403423 | 28.7168836 |
| 8               | 77.5399555 | 28.7165101 |
| 9               | 77.5404141 | 28.7158052 |
| 10              | 77.5382887 | 28.7142115 |
| 11              | 77.5385181 | 28.7188326 |
| 12              | 77.5380285 | 28.7195765 |
| 13              | 77.5384498 | 28.7200118 |
| 14              | 77.5389105 | 28.7192380 |
| 15              | 77.5389499 | 28.7205286 |
| 16              | 77.5393524 | 28.7209444 |
| 17              | 77.5398118 | 28.7201693 |
| 18              | 77.5394169 | 28.7197612 |
| 19              | 77.5422236 | 28.7128316 |
| 20              | 77.5427611 | 28.7130732 |
| 21              | 77.5431909 | 28.7123558 |
| 22              | 77.5426525 | 28.7121138 |
| 23              | 77.5438211 | 28.7126390 |
| 24              | 77.5433765 | 28.7133498 |
| 25              | 77.5437624 | 28.7135232 |
| 26              | 77.5445626 | 28.7129723 |
| 27              | 77.5448423 | 28.7130979 |
| 28              | 77.5440392 | 28.7136476 |
| 29              | 77.5442943 | 28.7137622 |
| 30              | 77.5451021 | 28.7132147 |

**Legend**

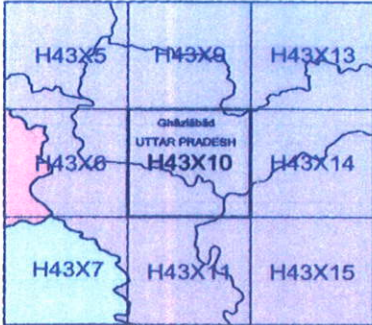
- GPS Coordinates
- - - Central Line Of T.L
- Existing Canal
- Proposed Protected Forest Land For Diversion
- Non Forest Land



Prepared by: NRM Geomatics Pvt.Ltd.



No. H43X10  
Scale 1:50,000



PLOTTER PRINT

भारतीय सर्वेक्षण विभाग SURVEY OF INDIA

1st Edition 2008. Price: Rs. 50/-

CONVENTIONAL SYMBOLS

- Express highway with toll, with bridge, with distance stone
- Roads, established according to importance
- Roads, double carriageway, according to importance
- Unsurfaced road, Cart-track, Pack-track with pass, Foot-path
- Streams with track in bed, underbed Canal
- Dams, masonry or rock, earthwork Weir
- River dry with water channel, with lined & rock, Tidal river
- Submerged rocks, Shoal, Swamp, Floods
- Wells, hand, unlined, Tube-well, Spring, Tanks, powered, dry
- Embankments, road or rail, bank, Broken ground
- Railways, broad gauge, double, single with station, under construction
- Railways, other gauge, double, single with distance stone, do
- Metrol line or tramway, Tram, Casing with tunnel
- Contours with sub-features, Rocky slopes, Cuts
- Band features (Tilt, Gradient, Alignment) (Meters/feet)
- Towns or Villages, inhabited, deserted, Fort
- Habit: permanent, temporary, Tower, Antiquities
- Temple, Chhatra, Church, Mosque, Light, Tomb, Graves
- Lighthouses, Lightship, Buoy, Lighted, unlighted, Anchorage
- Mine, Mine on hill, Grass, Scrub
- Palms, palms, other, Plantain, Cactus, Bamboo, Other trees
- Areas, cultivated, wooded, Surveyed line
- Boundary, international, state, demarcated, undemarcated
- Boundary pillars, surveyed, unlined, village, irrigation
- Height, triangulated station, point, approximate
- Bench-mark, geodetic, arbitrary, canal
- Post office, Telegraph office, Overhead tank
- Rail house or inspection building, Civil house, Police station
- Camping ground, Forest, reserved, protected
- Spaced names, administrative, locality or tribal
- Hospital, Dispensary, Veterinary hospital
- Power station, hydro, thermal, wind, solar, geothermal

Legend

- Canal Stream
- Forest Land
- Non Forest

PROJECTIONS AND DATUMS  
 Projection - UTM Datum - WGS 84  
 Magnetic Variation from True North about 1/2 East in 2008, (increasing by about 1 annually)  
 1:50,000  
 2 cm to 1 km  
 CONTOUR INTERVAL 20 METRES

COMPILED BY: A. 1st Edition 1970. Updated for major details during 2005-08.  
 Projection - UTM Datum - WGS 84  
 Magnetic Variation from True North about 1/2 East in 2008, (increasing by about 1 annually)  
 1:50,000  
 2 cm to 1 km  
 CONTOUR INTERVAL 20 METRES  
 For further details about this map, please contact  
 Additional Surveyor General  
 Uttar Pradesh Geo-Spatial Data Centre  
 Survey of India, 17 E.C. Road  
 Dehradun  
 Fax: 0135-2656402



परियोजना निदेशक / Project Director  
 भारतीय राष्ट्रीय राजमार्ग प्राधिकरण  
 National Highways Authority of India  
 नए दिल्ली - 110002

|                  |                    |                    |
|------------------|--------------------|--------------------|
| H43R8<br>(53H/8) | H43R12<br>(53H/12) | H43R16<br>(53G/16) |
| H43X5<br>(53H/5) | H43X9<br>(53H/9)   | H43X13<br>(64H/13) |
| H43X6<br>(53H/6) | H43X10<br>(53H/10) | H43X14<br>(53H/14) |

भारतीय सर्वेक्षण विभाग  
SURVEY OF INDIA  
1st Edition 2011. Price : Rs. 77/-

CONVENTIONAL SYMBOLS

Legend

- Forest Land
- Non Forest

REFERENCES

NOTES

COMPILED INDEX

Projection - UTM Datum - WGS 84

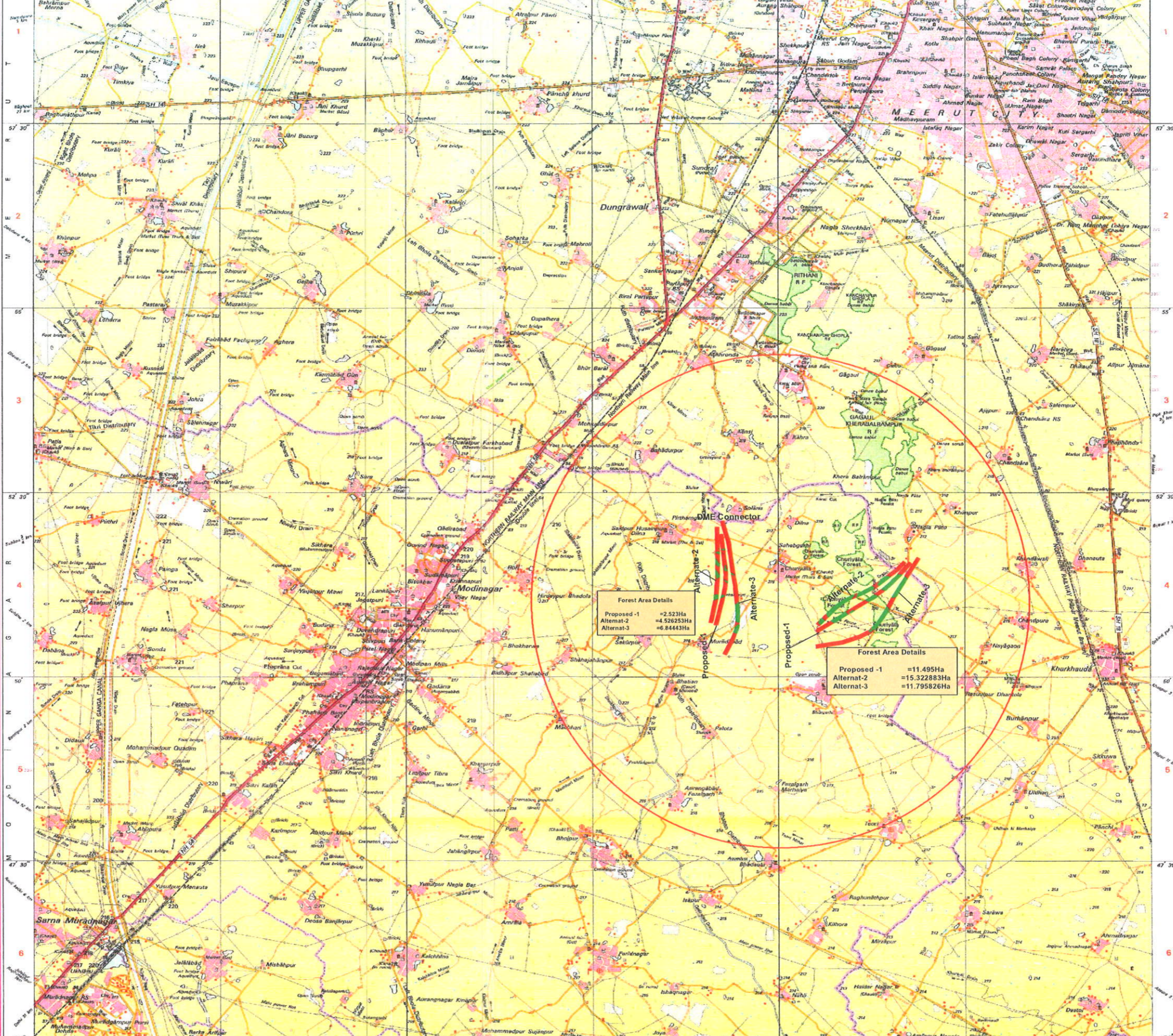
Magnetic Variation from True North about 3° East in 2005, increasing by about 1 annually.

Scale 1:50,000

Contours Interval 10 METRES

Director  
Uttarakhand and West Uttar Pradesh Geo-Spatial Data Centre  
Survey of India, 17 E.C. Road, Karanpur,  
Dehra Dun.

# Forest Land Proposed to be diverted with Two alternatives for part of Delhi-Meerut Expressway (Greenfield Project) passing through Forest Block Chriyala Forest Division Ghaziabad in Ghaziabad District



परियोजना निदेशक / Project Director  
भारतीय राष्ट्रीय राजमार्ग प्राधिकरण  
National Highways Authority of India