

85°42'30"E 85°45'0"E 85°47'30"E 85°50'0"E 85°52'30"E 85°55'0"E

21°17'30"N 21°15'0"N 21°12'30"N 21°10'0"N 21°7'30"N 21°5'0"N 21°2'30"N 21°0'0"N

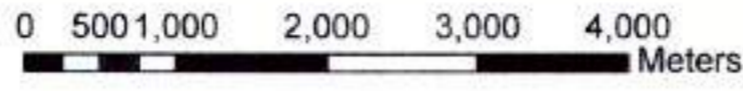
### TOPO SHEET SHOWING BOUNDARY OF FORESTLAND WITHIN MAHAGIRI MINES (CHROMITE) OF M/S IMFA LTD. PROPOSED FOR DIVERSION.



#### Legend

- FOREST BLOCK NO-27 (ALREADY DIVERTED - 66.38 HA.)
- SAL JUNGLE (PROPOSED FOR DIVERSION - 7.397 HA.)
- ORSAC SURVEYED LEASE BOUNDARY OF MAHAGIRI MINES (CHROMITE)

SCALE :- 1 : 50,000



**No. F45N16**  
Scale 1:50,000

F45N11 (73011)	F45N15 (73015) Kandajpur ORISSA	F45O3 (7303)
F45N12 (73012)	<b>F45N16</b> (73016)	F45O4 (7304)
Dhamra ORISSA	Jilapour ORISSA	F45U1 (7301)
F45T9 (7309)	F45T13 (73013)	

भारतीय सर्वेक्षण विभाग SURVEY OF INDIA  
1st Edition 2008

#### CONVENTIONAL SYMBOLS

Electric lightening with bolt, with bridge, with electric wire	
Roads, marked according to importance	
Roads, double carriageway, according to importance	
Unimproved road, G.M.W.R., Path-track and path, Foot-path	
Stream with track in bed, unforded, ford	
Dam, masonry or reinforced, with lock, with	
River, dry with lower channel, with island & rock, with	
Submerged rocks, Shoal, Slump, Weir	
Water, fresh, unforded, Tidal, with, Spring, Tanka, perennial, dry	
Embankment, road or rail, bank, Broken ground	
Railways, broad gauge, double single with, single, under construction, other gauges, double, single with distance stone, dry	
Mine, line or tunnel, K.M., Cutting with tunnel	
Contours with spot heights, Rocky slopes, Cliff	
Settlements, (Hill Stations, etc.) Government, (Urban, etc.)	
Towns or Villages, inhabited, Abandoned, Fort	
Rise, permanent, temporary, Tower, Antenna, etc.	
Tank, Chhat, Church, Mosque, High, Tanka, Grove	
Lighthouses, Light, Beacon, Light, Unlighted, Antenna	
Mine, Vise on rails, Open, Shaft	
Police, garrison, other, Prison, Canton, Barracks, Other, etc.	
Area, unforded, wooded, Burdened, etc.	
Boundaries, International	
State, demarcated, un-demarcated	
Boundary, village, settlement, etc.	
Height, measured, spot, peak, maximum, etc.	
Benches, permanent, temporary, level	
Post office, Telegraph office, Government, tank	
Tree forest in medicinal, botanical, Orkut, House, Public, etc.	
Camping ground, Forest, reserved, protected	
Speed, name, administrative, locality or road	
House, Dispensary, Veterinary, Hospital, Dispensary	
Airport, village, Tourist site	
Power line with pylons supported, with poles un-supported	

REFERENCES  
TOPO Topo Insa & Base Contours  
OSRCS Orissa State Commercial Transport Corporation.

NOTES  
Height in m in metric and 3000 inches in feet sea level.  
Contours are approximate.  
A relative height, etc., represents the approximate height, in metres, between the top and bottom of a steep slope.  
The electric boundary between Kandajpur and Jilapour Districts has been surveyed as per order by the local officials on the ground but has not been verified by the District authorities.  
The actual boundaries of areas of Reserved or Protected Forests are shown for green records. The topographic heights and contours have not been adjusted with the heights of agricultural settlements and may not be entirely in accordance with them.  
Forest Plans in which they

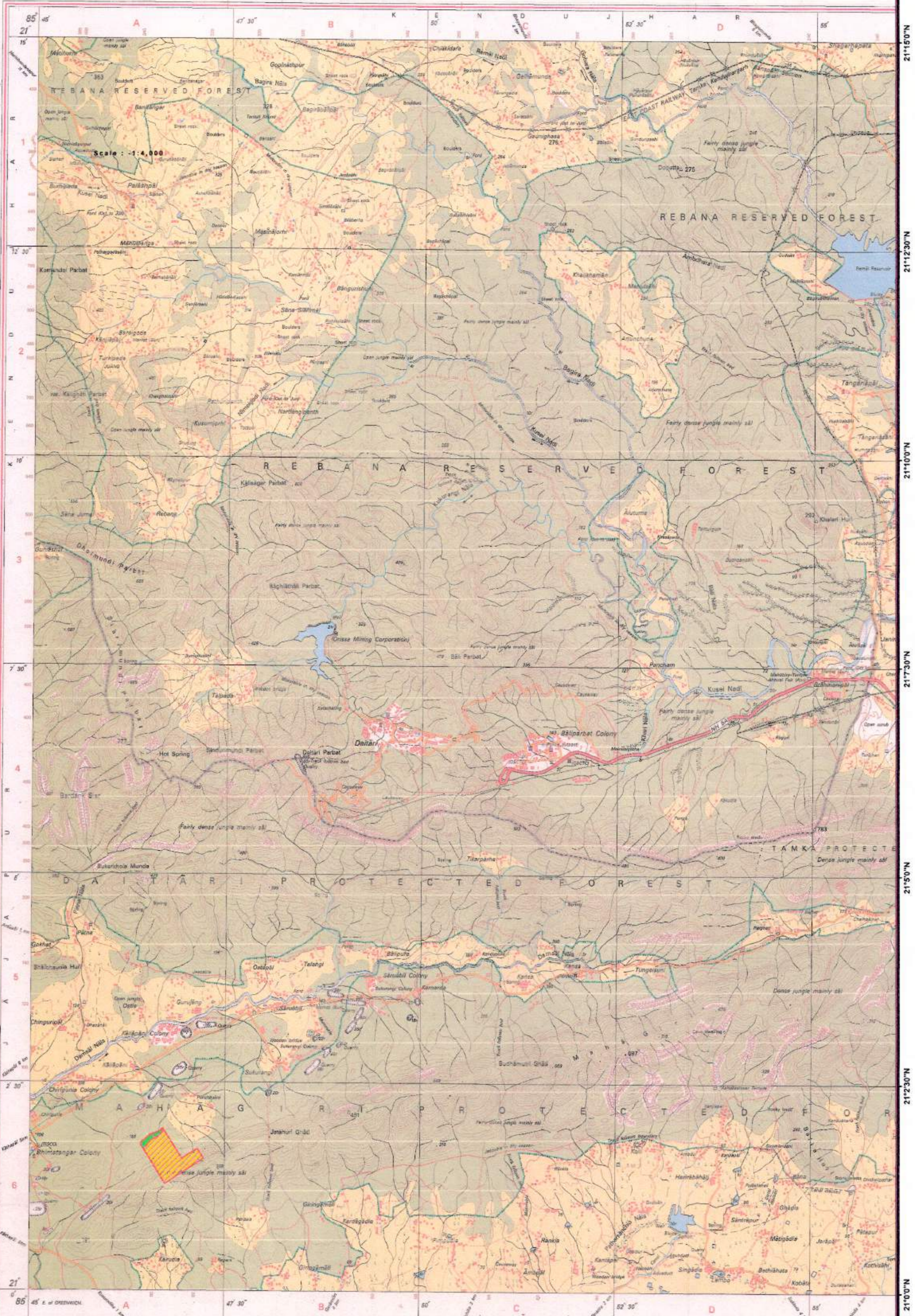
#### COMPILED INDEX

A. Compiled from 1:50,000 survey 1979-75. Updated for major details during 2008-09.
---

Projection - UTM Distort - WGS 84  
Magnetic Variation from True North about 1/2° West in 2005. Annual Change negligible.  
Scale 1:50,000  
CONTOUR INTERVAL 20 METRES

For further details about this map, please contact:  
Director  
Orissa Geo-Spatial Data Centre  
Survey of India  
Survey Bhawan, PO - R.R. Laboratory  
Bhubaneswar-751013.  
Fax : 0674 - 2301418  
WEBSITE - www.surveyofindia.gov.in

in whole or part by any means is prohibited without written permission of Survey of India, the Mapping Agency.  
NOA COPYRIGHT, 2008.



MSO. No. 8427-IPG/09 (Orissa GOC-150,000-1015)  
Published under the direction of Surveyor General of India, Survey of India, HMTB/Varanasi Estate, Post Box No. 37, Dehra Dun-248001 (Uttarakhand), Department of Science & Technology, Government of India.

For Indian Metals & Ferro Alloys Ltd.  
**(Sanjeev Das)**  
Constituted Attorney

85°42'30"E 85°45'0"E 85°47'30"E 85°50'0"E 85°52'30"E 85°55'0"E