

No. E43U16

Scale 1:50,000

E43U11	E43U15	Bāgaikot KARNĀTAKA
E43U12	E43U16 Belgaum KARNĀTAKA	E43V4
D43C9	D43C13	D43D1

1 Kohāpur, MAHARĀSHTRA.

भारतीय सर्वेक्षण विभाग

SURVEY OF INDIA

1st Edition 2009.

Price: Rs. 50/-

CONVENTIONAL SYMBOLS

Express highway with toll, with bridge, with distance stone	
Roads, metalled, according to importance	
Roads, double cartage-way, according to importance	
Unmetalled road, Cart-track, Pack-track with pass, Foot-path	
Stream: with track in bed, undefined, Canal	
Dam: masonry or rock-filled, earthwork, Weir	
River: dry with water channel, with island & rocks, Tide river	
Submerged rocks, Shoal, Swamp, Roads	
Wells: lined, unlined, Tube-well, Spring, Tanks, perennial, dry	
Embankments: road or rail, tank, broken ground	
Railways, broad gauge, double, single with station, under construction	
Railways, other gauges: double, single with distance stone, do.	
Mine: live or tramway, Kin, Cutting with tunnel	
Contours with sub-features: Rocky slopes, Cliffs	
Sand features: (1) Flat (2) Sand-hill (permanent) (3) Dunes (shifting)	
Towns or Villages: inhabited, deserted, Fort	
Huts: permanent, temporary, Tower, Antiquities	
Temples, Chhatris, Church, Mosque, Pagoda, Tomb, Graves	
Lighthouse, Lightship, Buoy, Lighted, unlighted, Anemometer	
Mine, View on hills, Grass, Scrub	
Palm, palmyra, other, Plantain, Conifer, Bamboo, Other trees	
Areas cultivated, wooded, Surveyed trees	
Boundary, international	
state demarcated, undemarcated	
district, subdivision, taluk or taluk, forest	
Boundary pillars: surveyed, unlocated	
Height, triangulated station, point, approximate	
Bench-mark, geodetic, tertiary, canal	
Post office, Telegraph office, Overhead tank	
Rest house or inspection bungalow, Circular house, Police station	
Camping ground, Forest, reserved, protected	
Signal tower, administrative, locally or trial	
Hospital, Dispensary, Veterinary hospital	
Aerodrome, Helipad, Tourist site	
Power line, with pylons surveyed, with poles unsurveyed	

NOTES:-

Heights are in metres and above Indian mean sea level.
Contours are approximate.
A relative height e.g., 10, represents the approximate height, in metres, between top and bottom of a steep slope.
This sheet has been compiled from 1:25,000 survey, 1955-63.
Unmetalled roads and cart-tracks in this sheet are generally motorable in dry season.
The kilometre scale numbers along railway, roads and canals are shown in italic type, e.g., 10, whereas milestone numbers are shown in upright type, e.g., 10.

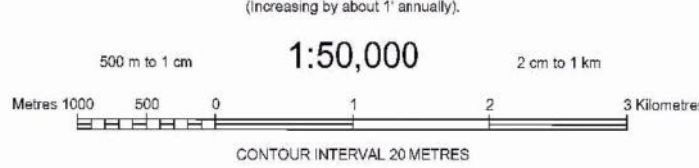
COMPILATION INDEX

A. Surveyed during 1952-63, updated for major details during 2005-08.



Projection - UTM Datum - WGS 84

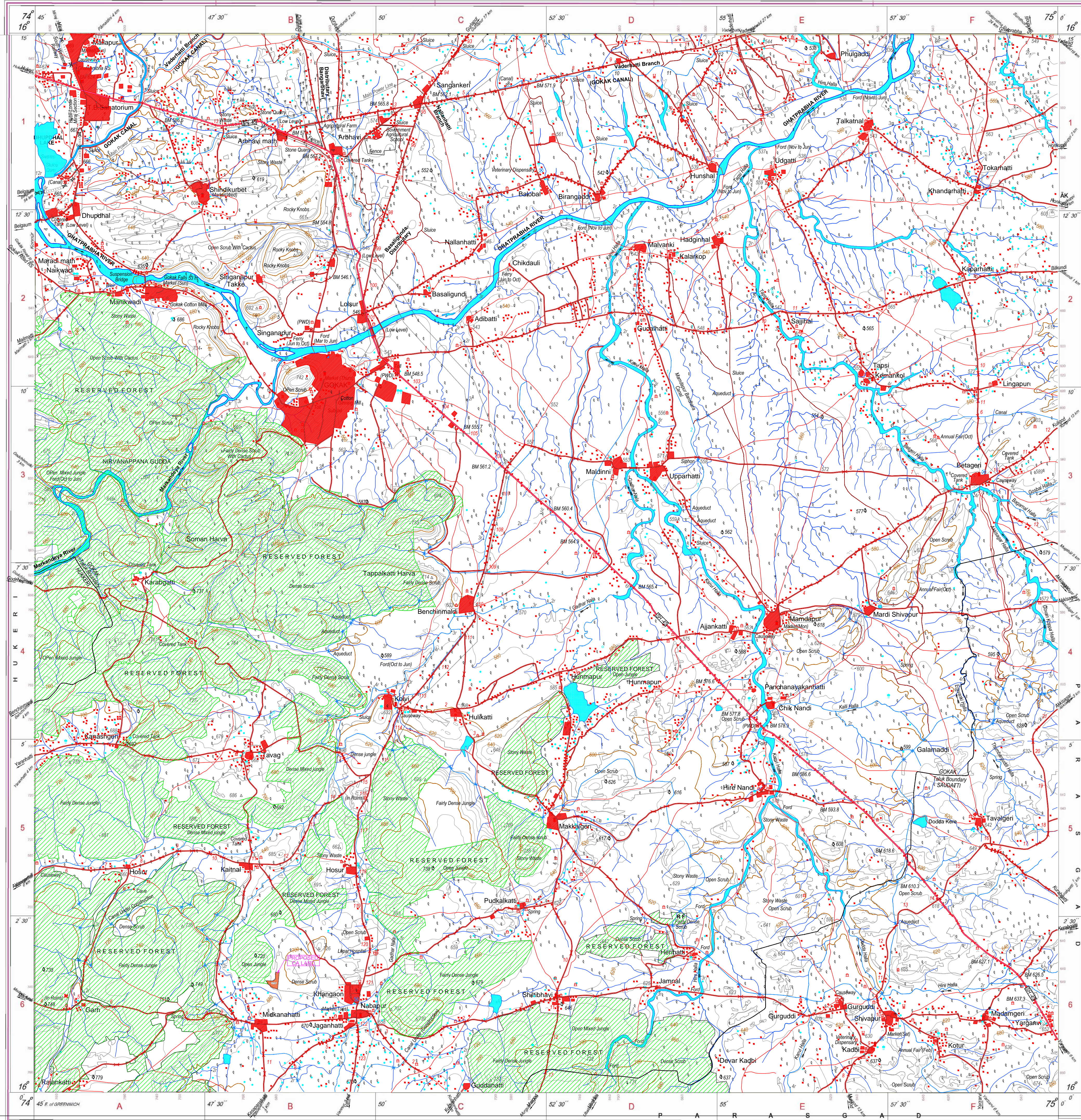
Magnetic Variation from True North about 1° West in 2005.
(increasing by about 1° annually).



For further details about this map, please contact

Director
Karnataka Geo-Spatial Data Centre
Survey of India, Sarjapur Road
Koramangala II Block
Bangalore.

WEBSITE - www.surveyofindia.gov.in



SL. NO.	POINT	LAT., LONG
1	A	16° 1'34.92"N 74°48'25.44"E
2	B	16° 1'33.10"N 74°48'26.52"E
3	C	16° 1'32.50"N 74°48'27.50"E
4	D	16° 1'30.50"N 74°48'29.10"E
5	E	16° 1'29.40"N 74°48'31.50"E
6	F	16° 1'28.39"N 74°48'35.30"E
7	G	16° 1'43.66"N 74°48'36.64"E
8	H	16° 1'43.75"N 74°48'33.62"E
9	I	16° 1'37.08"N 74°48'33.36"E
10	J	16° 1'35.10"N 74°48'30.96"E

Assistant Executive Engineer
Karnataka Neeravari Nigam Ltd.,
G.R.B.C.C., Sub-Div. No. 8, Gokak.

Executive Engineer
Karnataka Neeravari Nigam Ltd.,
G.R.B.C.C., Sub-Div. No. 8, GOKAK.

CLIENT: KARNATAKA NEERAVARI NIGAM LTD.,
(GOVT. OF KARNATAKA UNDERTAKING)

PROJECT: CHACHADI LIFT IRRIGATION SCHEME

TITLE: PROPOSED CA LAND FOR CHACHADI LIFT
IRRIGATION SCHEME

CONSULTANTS: BANGALORE HYDRO
ENGINEERS & CONSULTANTS PVT. LTD.,
800, 12th CROSS,
AYALAHALLI EXTN. GIRINAGAR III PHASE,
BENGALURU - 560 085.

Assistant Executive Engineer KNNL GRBCC Sub-Div. 8 GOKAK	Executive Engineer KNNL GRBCC Div. 3 GOKAK	Superintending Engineer KNNL GRBCC Circle HIDAL DAM	Chief Engineer KNNL IRRIGATION (N) BELGAM
DRAWN SUMANTH	DESIGNED RSK	CHECKED RSK	RECOMMENDED SNS
APPROVED			DATE 1:50000 26.02.20
DRG. No.: BHEC/KNNL/CL/CA/TOPO			SHR: 1/1 REV: 1