



निर्वात के लिए नहीं NOT FOR EXPORT

OPEN SERIES  
MAP

No. F42R3

Scale 1:50,000

F42Q14 (41K/14)	F42R2 (41O/2)	F42R6 (41O/6)
F42Q15 (41K/15)	Amreli GUJARAT F42R3 (41O/3)	F42R7 (41O/7) 2 Bhavnagar GUJARAT
F42Q16 (41K/16) Junagadh GUJARAT	F42R4 (41Q/4)	F42R8 (41O/8)

1 Rajkot, GUJARAT.

भारतीय सर्वेक्षण विभाग

SURVEY OF INDIA

1st Edition 2011.

Price : Rs. 70/-

#### CONVENTIONAL SYMBOLS

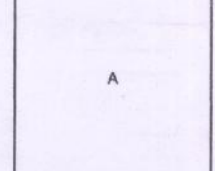
Express highway, with toll; with bridge; with distance stone	
Roads, metalled; according to importance	
Roads, double carriageway; according to importance	
Unmetalled road. Cart-track. Pack-track with pass. Foot-path	
Streams with track in bed; undefined. Canal	
Dams: masonry or rock-filled; earthwork. Weir	
River: dry with water channel; with island & rocks. Tidal river	
Submerged rocks. Shoal. Swamp. Reeds	
Wells: lined; unlined. Tube-well. Spring. Tanks: perennial; dry	
Embankments: road or rail; tank. Broken ground	
Railways, broad gauge: double; single with station; under constn.	
Railways, other gauges: double; single with distance stone; do.	
Mineral line or tramway. Kdn. Cutting with tunnel	
Contours with sub-features. Rocky slopes. Cliffs	
Sand features: (1) flat (2) sand-hills(permanent). (3) dunes(shifting)	
Towns or Villages: inhabited; deserted. Fort	
Huts: permanent; temporary. Tower. Antiquities	
Temple. Chhatra. Church. Mosque. Idgah. Tomb. Graves	
Lighthouse. Lightship. Buoys: lighted; unlighted. Anchorage	
Mine. Vine on trails. Grass. Scrub	
Palms: palmyra; other. Plantain. Conifer. Bamboo. Other trees	
Areas: cultivated; wooded. Surveyed tree	
Boundary, international	
state: demarcated; undemarcated	
district: subdivided; tahsil or taluk; forest	
Boundary pillars: surveyed; unlocated	
Heights, triangulated; station; point; approximate	
Bench-mark: geodetic; tertiary; canal	
Post office. Telegraph office. Overhead tank	
Rest house or inspection bungalow. Circuit house. Police station	
Camping ground. Forest: reserved; protected	
Spaced names: administrative; locality or tribal	
Hospital. Dispensary. Veterinary. Hospital / Dispensary	
Aerodrome. Helipad. Tourist site	
Power line: with pylons surveyed; with poles unsurveyed	

#### NOTES :-

Heights and Contours have not been shown.  
A relative height, e.g., 8', represents the approximate height, in metres, between the top and bottom of a steep slope.  
Tanks, shown dry, in this area usually contain water from July to December.  
Cart-tracks in this sheet are generally motorable (four-wheel drive) in dry season.  
Cactus hedges generally exist along cart-tracks and field-bounds.

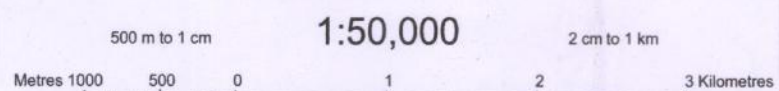
#### COMPILATION INDEX

A. Surveyed during 1966-67. Updated for major details during 1999-2000.



Projection - UTM Datum - WGS 84

Magnetic Variation from True North about 1° West in 2005.  
(Decreasing by about 1° annually).

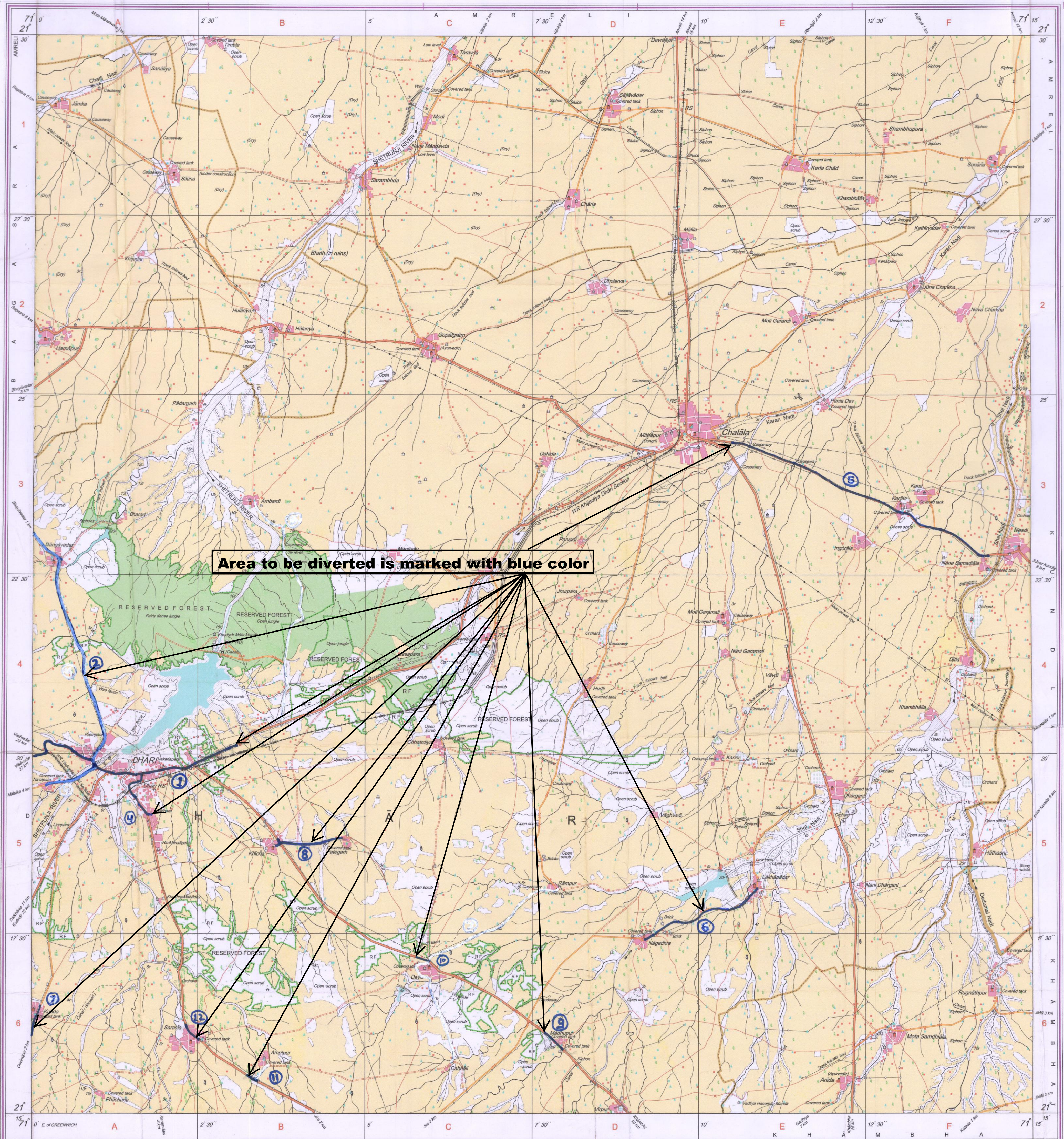


For further details about this map, please contact  
Director  
Gujarat, Daman & Diu Geo-Spatial Data Centre  
Survey of India, Sector 10(A)  
Gandhinagar.

WEBSITE - [www.surveyofindia.gov.in](http://www.surveyofindia.gov.in)

Reproduction in whole or part by any means is prohibited  
without the written permission of Survey of India, the  
National Mapping Agency.

GOVERNMENT OF INDIA COPYRIGHT, 2011.



REG. No. - SPO D11 (GDAD GDC-1:50,000)

गुजरात, दमन व दीव / Gujarat, Daman & Diu  
भूगोलीय आँकड़ा केंद्र / Geo Spatial Data Centre  
भारतीय सर्वेक्षण विभाग / Survey of India

डि.नो. 58/43 dt 28/11/2017  
SPO/11

भारत के महसूबके, सर्वेक्षण विभाग, पोस्ट बॉक्स नं. 37, देहरादून-248001 (उत्तराखण्ड),  
Survey of India, Hathi Bunka Estate, Post Box No. 37, Dehra Dun-248001 (Uttarakhand),  
Department of Science & Technology, Government of India.

PRINTED AT THE SOUTHERN PRINTING GROUP OF SURVEY OF INDIA.



निर्यात के लिए नहीं NOT FOR EXPORT

OPEN SERIES  
MAP

No. F42Q15

Scale 1:50,000

<p>1 Rājkot GUJARAT</p> <p><b>F42Q10</b> (41K/10)</p>	<p><b>F42Q14</b> (41K/14)</p>	<p>1</p> <p><b>F42R2</b> (41C/2)</p>
<p><b>F42Q11</b> (41K/11)</p> <p>Jūnāgadh GUJARAT</p>	<p>3 2 1</p> <p><b>F42Q15</b> (41K/15)</p>	<p>3 Anreli GUJARAT</p> <p><b>F42R3</b> (41C/3)</p>
<p><b>F42Q12</b> (41K/12)</p>	<p><b>F42Q16</b> (41K/16)</p>	<p>2</p> <p><b>F42R4</b> (41C/4)</p>

2 Bhāvnagar, GUJĀRAT.

भारतीय सर्वेक्षण विभाग

SURVEY OF INDIA

1st Edition 2011.

Price : ₹ 77/-

### CONVENTIONAL SYMBOLS

Express Highway: with toll; with bridge; with distance stone				
roads, installed: according to importance				
roads, double carriageway: according to importance				
Junctional road: Cart-track; road with pass, foot-path				
Jessam: with track in bed; unforded Canal				
Mass: masonry or rock-filled; earthwork. Wall				
Delta: dry with water channel, with island & rocks. Tidal river				
Emergent rocks. Shoal. Swamps. Reeds				
Wells: lined; unlined. Tule-well. Spring. Tanks: perennial: dry				
Embankments: road or rail; tank. Broken ground				
Valleys, broad gorges: double; single with station under coastin. Valleys, other gorges: double; single with distance stone; do.				
Mineral line or tramway. Kilns. Cutting with tunnel				
Zontours with features. Rocky slopes. Cliffs				
Sea features: (1) (2) (3) (4) (5) (6) (7) (8) (9) (10) (11) (12) (13) (14) (15) (16) (17) (18) (19) (20) (21) (22) (23) (24) (25) (26) (27) (28) (29) (30) (31) (32) (33) (34) (35) (36) (37) (38) (39) (40) (41) (42) (43) (44) (45) (46) (47) (48) (49) (50) (51) (52) (53) (54) (55) (56) (57) (58) (59) (60) (61) (62) (63) (64) (65) (66) (67) (68) (69) (70) (71) (72) (73) (74) (75) (76) (77) (78) (79) (80) (81) (82) (83) (84) (85) (86) (87) (88) (89) (90) (91) (92) (93) (94) (95) (96) (97) (98) (99) (100)				
Towns or villages: inhabited; deserted. Town				
Site: permanent; temporary. Tower. Antiquities				
Place. Chahar. Churn. Mosque. Idgah. Tomb. Graves				
Jighous. Lightsip. Buoys; lighted; unlighted. Anchorage				
Mine. Vine on trellis. Grass. Scrub				
Mine: palms; other. Plantain. Confiler. Bamboo. Other trees				
Artes: cultivated; wooded. Surveyed tree				
boundary, international				
= state: demarcated; undemarcated				
= district: subdivision, taluk or taluk; forest				
boundary, triangulated: surveyed; unlocated				
triangles, pillars: station; point: approximate				
Jench-march: geodesic; tertiary; canal				
tel. Telegraph office. Overhead tank				
test house or inspection building. Circuit house. Police station				
camping ground: Forest: reserved; protected				
Spaced names: administrative; locality or tribal				
hospital, Dispensary, Veterinary Hospital / Dispensary				
Landmark. Helipad. Tourist site				
lower line: with pylons surveyed; with poles unsurveyed				

## REFERENCE

*WR* Western Railway

NOTES :-

Heights are in metres and above Indian mean sea level.  
Contours are approximate.  
A relative height, e.g.,  $\Delta R$ , represents the approximate height, in metres, between the top and bottom of a steep slope.  
Unmetalled roads and cart-tracks in this sheet are generally motorable in dry season.  
Tanks, shown dry, in this area usually contain water from July to November.  
Gir Reserved forest area is not included in any  $\Delta$  block, but it is a part of Jónāgadh District.

## COMPILATION INDEX

A. Surveyed during 1986-87. Updated for major details during 1999-2000.

Projection - UTM Datum - WGS 84

Magnetic Variation from True North about  $\frac{1}{2}^{\circ}$  West in 2005.  
(Decreasing by about  $1'$  annually).

1:50,000

CONTOUR INTERVAL 20 METRES

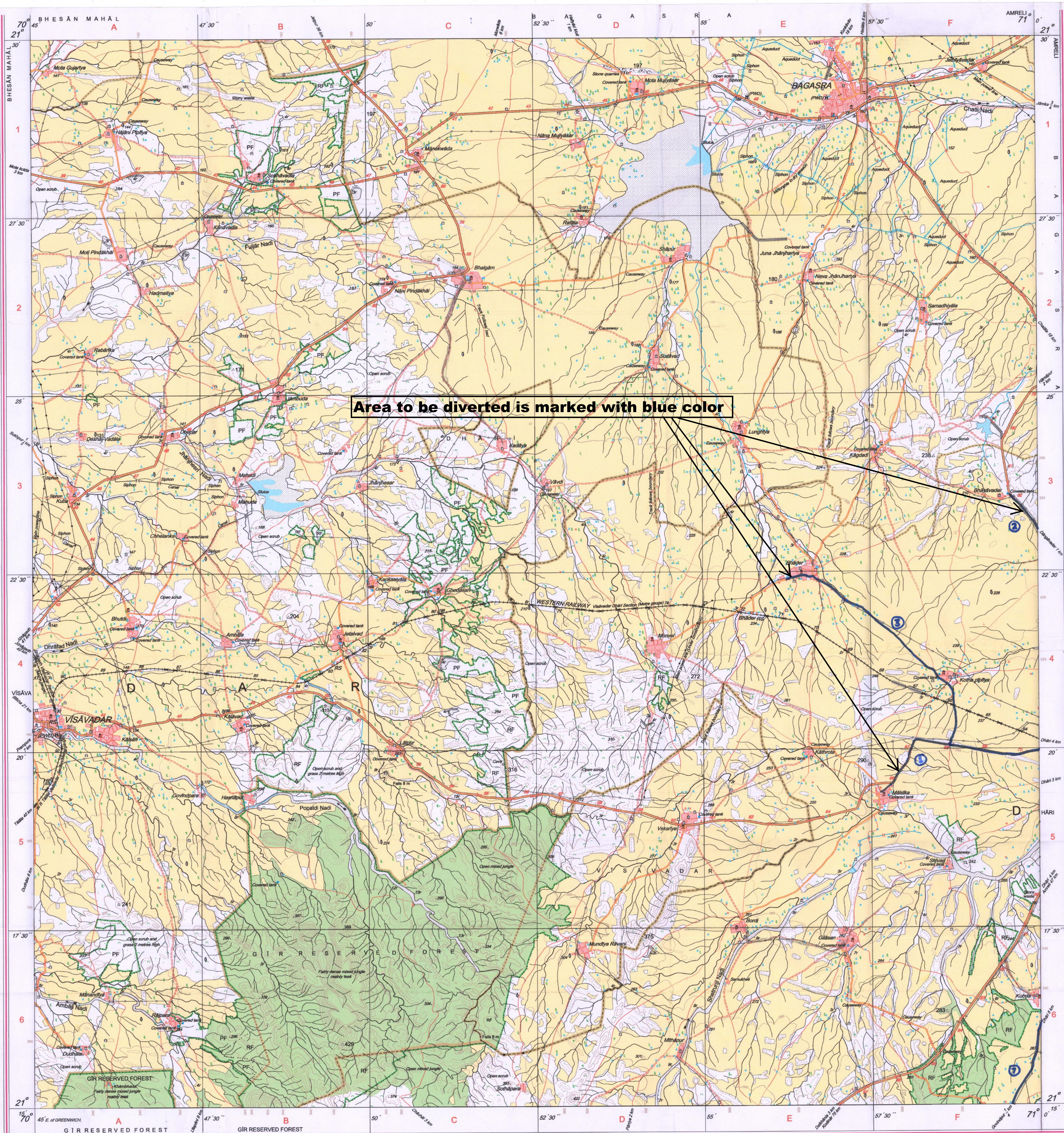
For further details about this map, please contact

Director  
Gujarat, Daman & Diu Geo-Spatial Data Centre  
Survey of India, Sector 10 A  
Gandhinagar

WEBSITE - [www.surveyofindia.gov.in](http://www.surveyofindia.gov.in)

Reproduction in whole or part by any means is prohibited without the written permission of Survey of India, the National Mapping Agency.

GOVERNMENT OF INDIA COPYRIGHT, 2011.



REG. No.	-SPG D'11 (GD&D GDC-1:50,000)
----------	-------------------------------

1954-1955: GRANTON & CO  
1956-1957: GRANTON & CO

Bill No. 58/43, dt. 28.11.2017

भारत के महासर्वेक्षक स्वर्ण सुब्बा राव, बीपीईओ, को निदेशन में प्रकाशित,  
Under the direction of Swarna Subba Rao, B.E., Surveyor General of India,  
of India, Hathiarkala Estate, Post Box No.37, Dehra Dun-248001 (Uttarakhand)  
Department of Science & Technology, Government of India.

PRINTED AT THE SOUTHERN PRINTING GROUP OF SURVEY OF INDIA